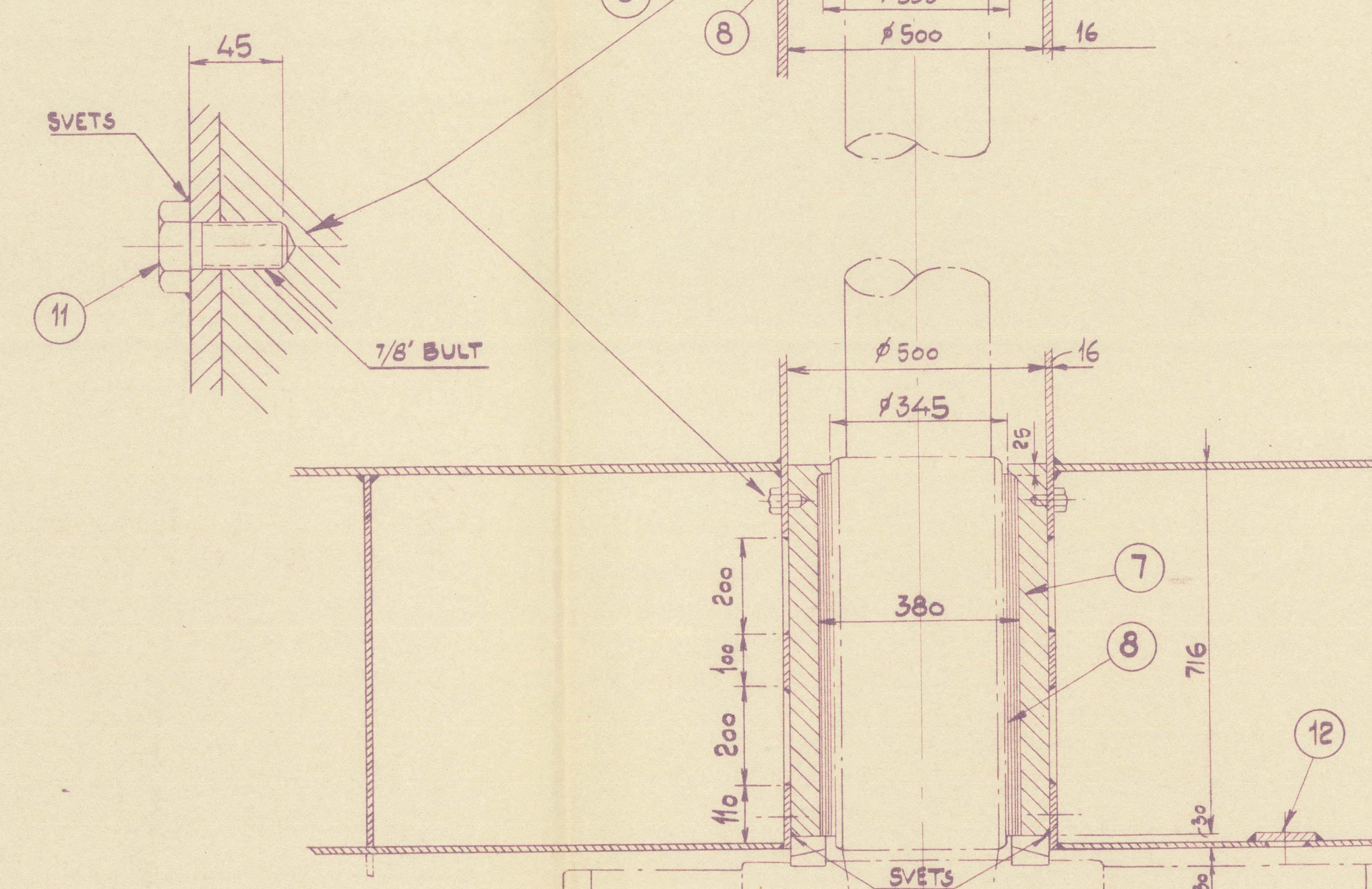


Technical drawing of a mechanical part, likely a valve or plug, showing a cross-section with dimensions. The part has a central circular hole with a diameter of 150. The top flange has a thickness of 4.5. The drawing is labeled '11/11'.



1/3		56	
ÄNDRING	ÄNDR. AV	DATUM	UDDEVÄLLAVARVET AB
			M/s 160
			<u>RÖDER</u>
			(RUDDER)
			(RUDER)
			ETID AV: B.J. SKALA: 1:20; 1:10
			KOP. AV: DATUM: 28-10-
			BRÅNSKAD AV: GODK. AV:
			160/5