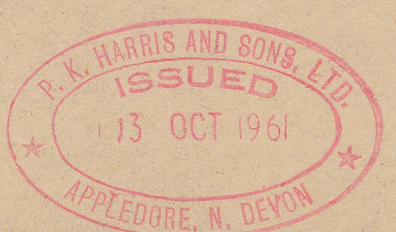


S.S.DIESEL TUG. "ALICE" YARD. 133
GENERAL ARRANGEMENT. (AS FITTED)

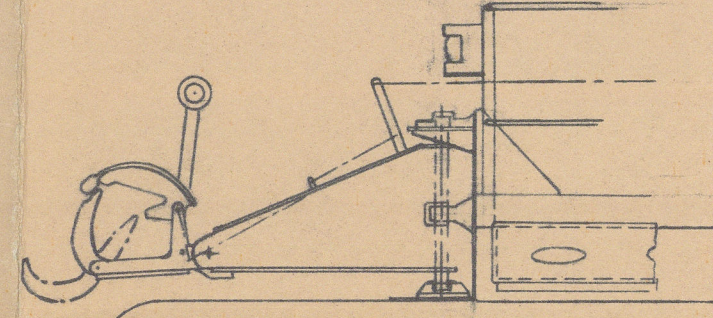
DIMENSIONS:- L.O.A 61'-3" L.B.P 56'-9" B.M.L.D. 16'-10" D.M.L.D. 7'-9"

SCALE:- 3/8"=1 FOOT

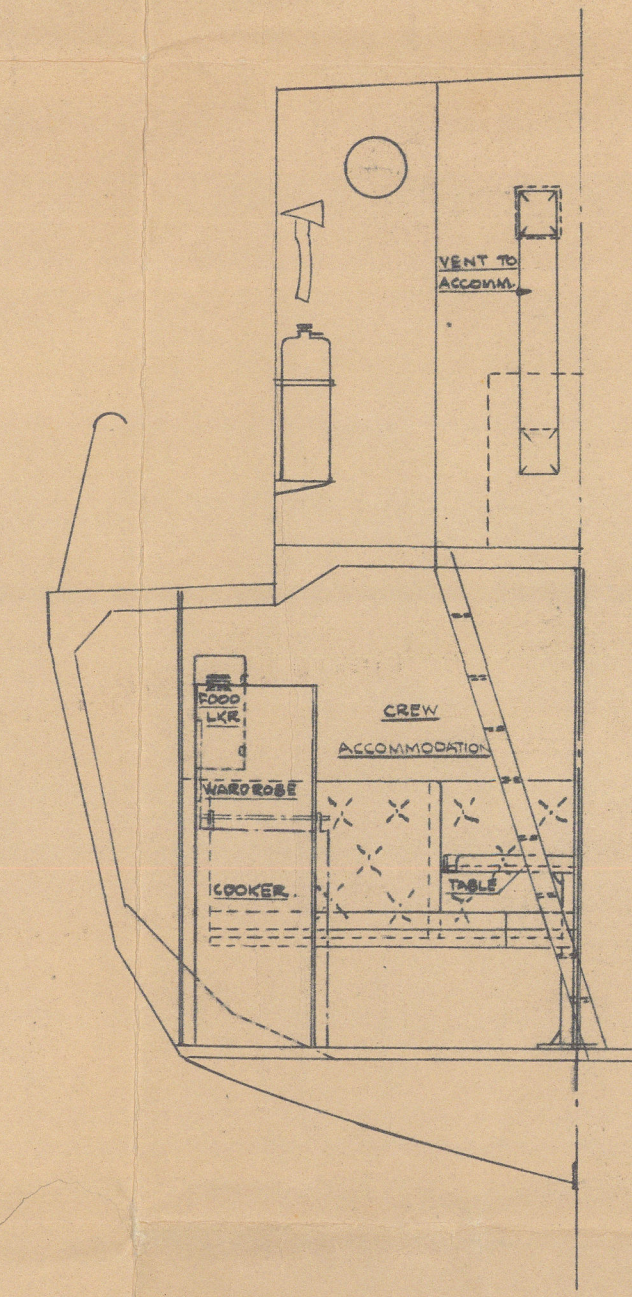
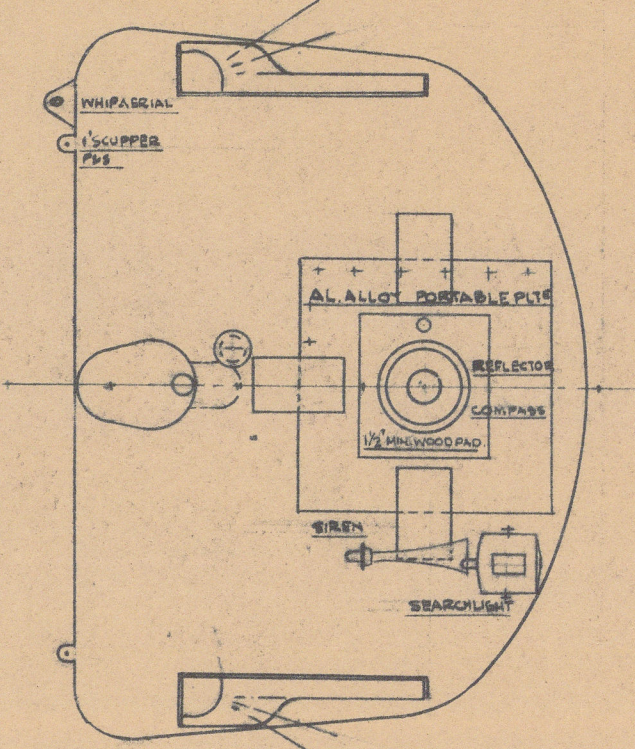
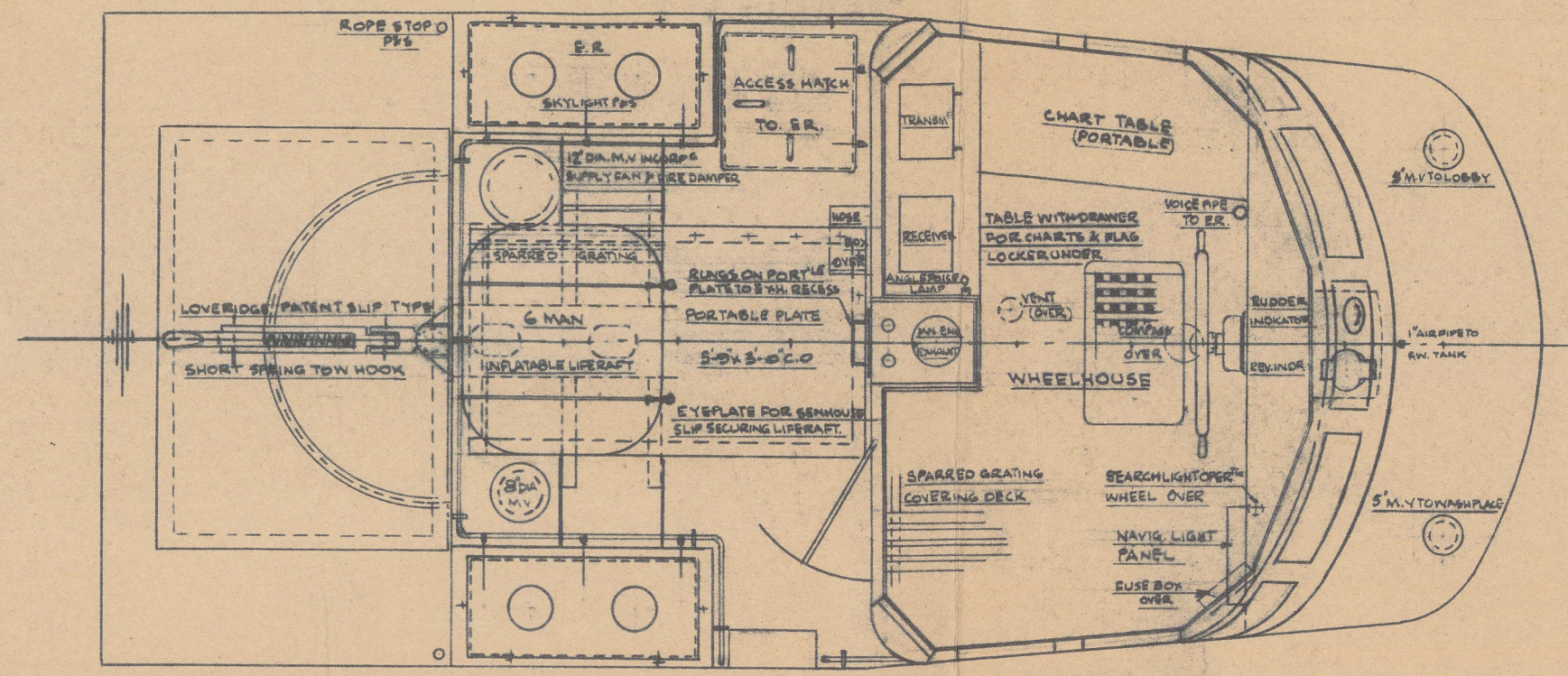
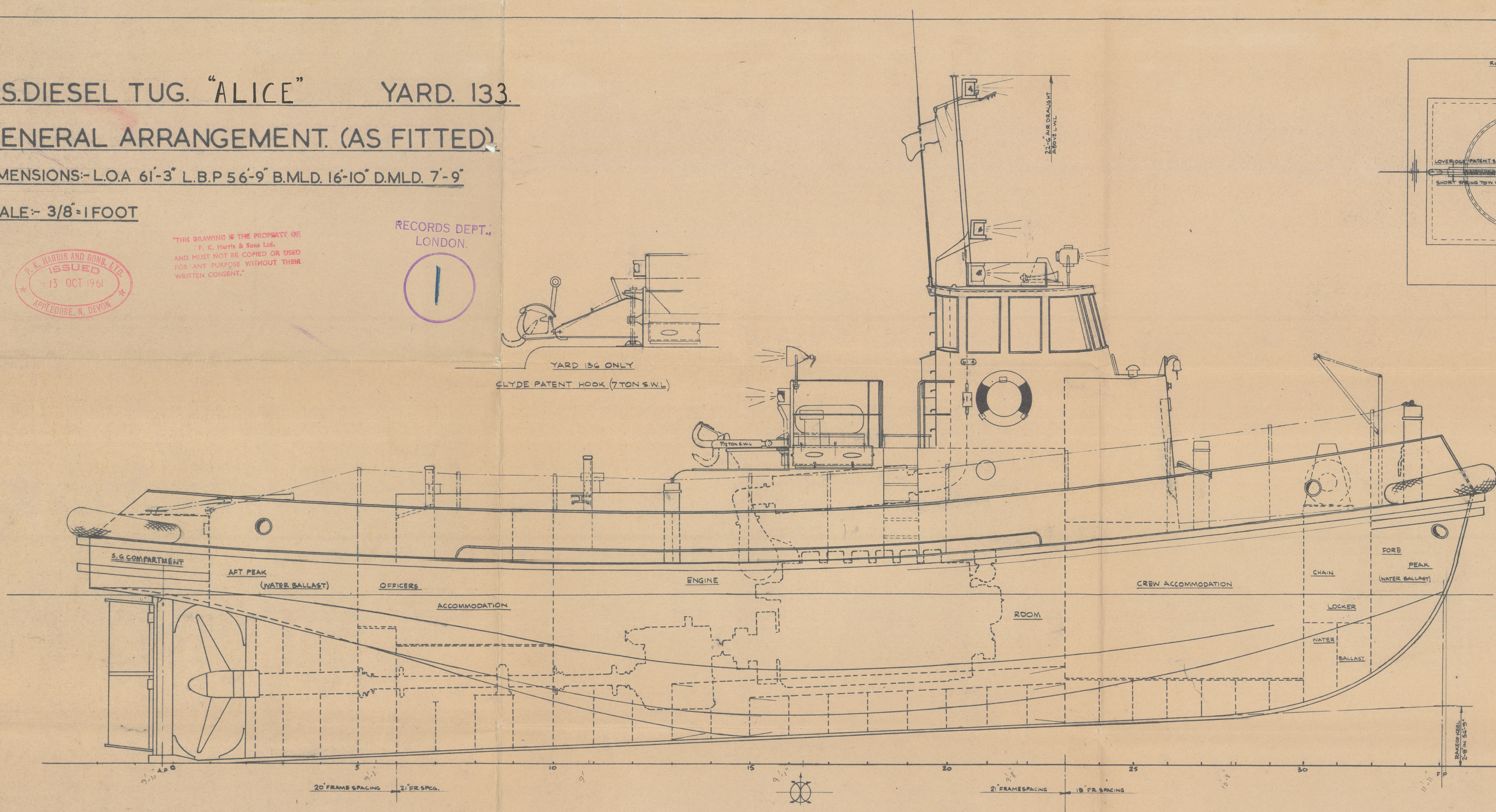


THIS DRAWING IS THE PROPERTY OF P. K. HARRIS & SONS LTD. AND MUST NOT BE COPIED OR USED FOR ANY PURPOSE WITHOUT THEIR WRITTEN CONSENT.

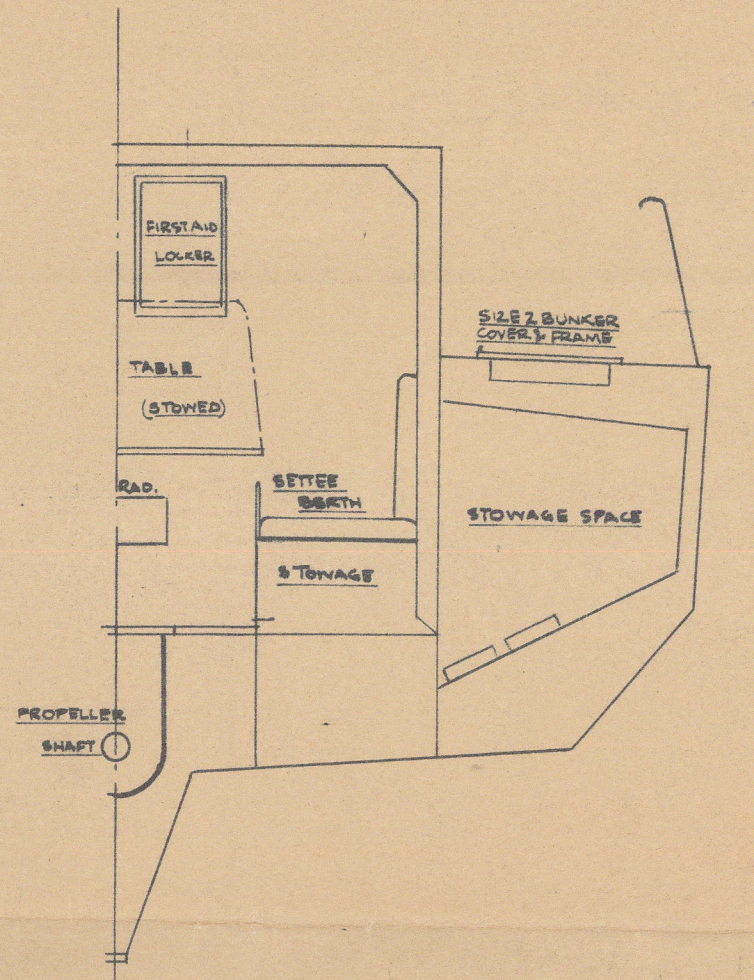
RECORDS DEPT. LONDON.



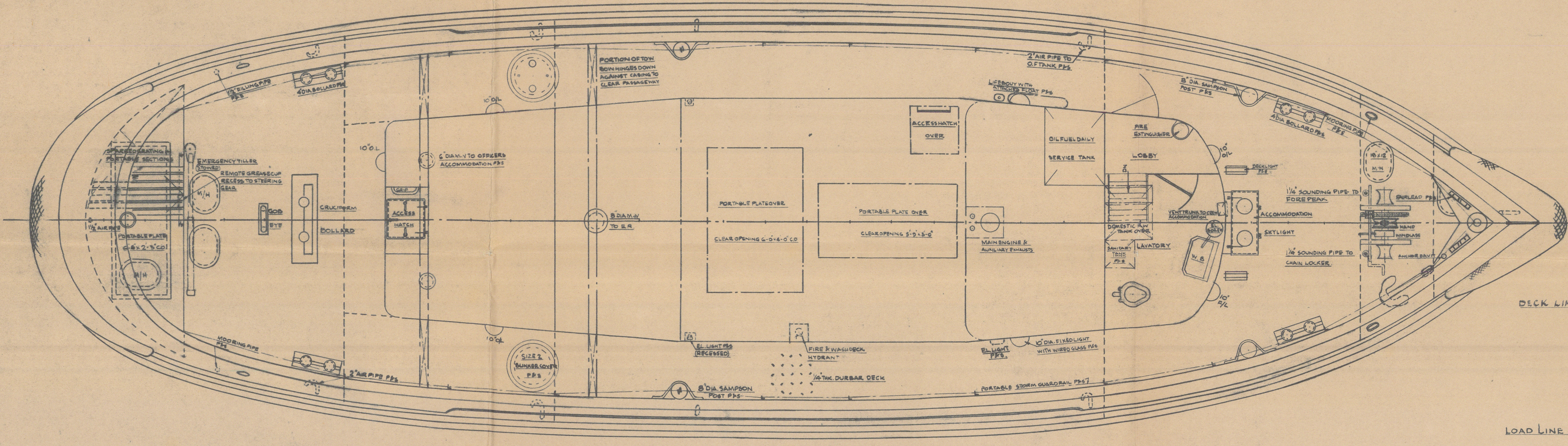
CLYDE PATENT HOOK (7.7 TON S.W.L.)



SECTION ABOUT F.P.S. LOOKING FORD.



SECTION ABOUT F.P.S. LOOKING FORD.



DECK LINE

LOAD LINE

LIGHT LOAD LINE

MEAN DEPT IN FEET	FREEBOARD IN FEET	T.P.I.	DEADWEIGHT (IN TONS)	DISPLACEMENT (IN TONS)
7	1	1.95	32.0	99.0
6	2	1.90	26.5	93.5
		1.85	20.2	87.2
5	3	1.79	13.5	80.5
		1.75	9.0	76.0
4	4	1.70	4.0	71.0
3	5	1.66	0	67.0
2		1.65		63.2

LIFE SAVING APPLIANCES
ONE - GRAB INFLATABLE LIFE RAFT
TWO - LIFEBOATS
FIVE - LIFEJACKETS 18 ONE PER PERSON
THREE - PARACHUTE DISTRESS ROCKETS

EQUIPMENT
ONE - STOCKLESS ANCHOR 1 1/2 CWT
THREE - 5/8 INCH LIFT-A-1/2 DAY LUMINABLE
50 FATHOM 1/2 INCH CIRCUMFERENCE 4 STRAND HOORING ROPE
50 FATHOM 2 1/2 INCH CIRCUMFERENCE 4 STRAND HOORING ROPE
(HOORING ROPE TO BE IN 5 FATHOM LENGTHS WITH SOFT EYE AT ONE END)

PRINCIPAL DIMENSIONS:-
LENGTH OVERALL 61'-3"
LENGTH B.P. 56'-9"
BREADTH M.L.D. 16'-10"
DEPTH M.L.D. 7'-9"

FIRE FIGHTING APPLIANCES
ONE - APPROVED PUMP
TWO - 30 FT LENGTH HOSE WITH REEL JET NOZZLE
& INSTANTANEOUS COUPLING
ONE - 3 CWT SAND BOX 3' DEEP IN ENGINE ROOM
TWO - 3 GALLON FOAM EXTINGUISHER IN ENGINE ROOM
ONE - 3 GALLON FOAM EXTINGUISHER IN ACCOMMODATION LOBBY
ONE - FIREWAX ASB IN ACCOMMODATION LOBBY

FLOOR COVERINGS
FORD & ACCOMMODATION - LINOLEUM
WHEELHOUSE - LINOLEUM
WHEELHOUSE - SPARKED WOOD GRATING

LININGS INSULATION
OFFICERS & CREW ACCOMMODATION LINED WITH PLASTIC
FACED PLYWOOD & INSULATED WITH FIBRE GLASS IN WAY OF
ENGINE ROOM BULKHEADS, ACCOMMODATION & LAVATORY DECKHEAD
INSULATED WITH FIBRE GLASS BLANKET WITH PAINTED PLYWOOD.