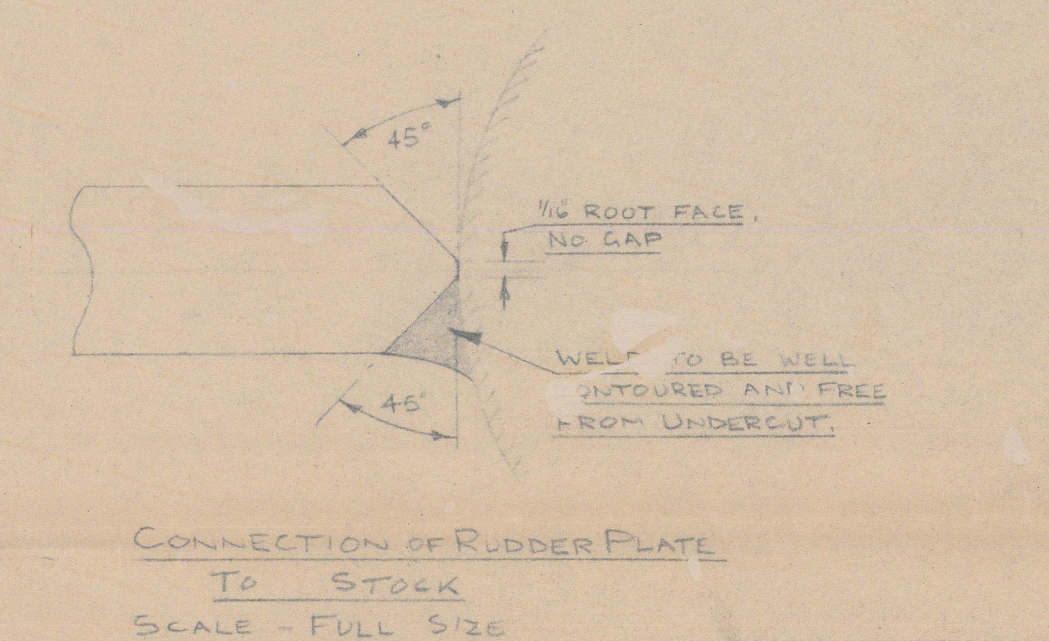
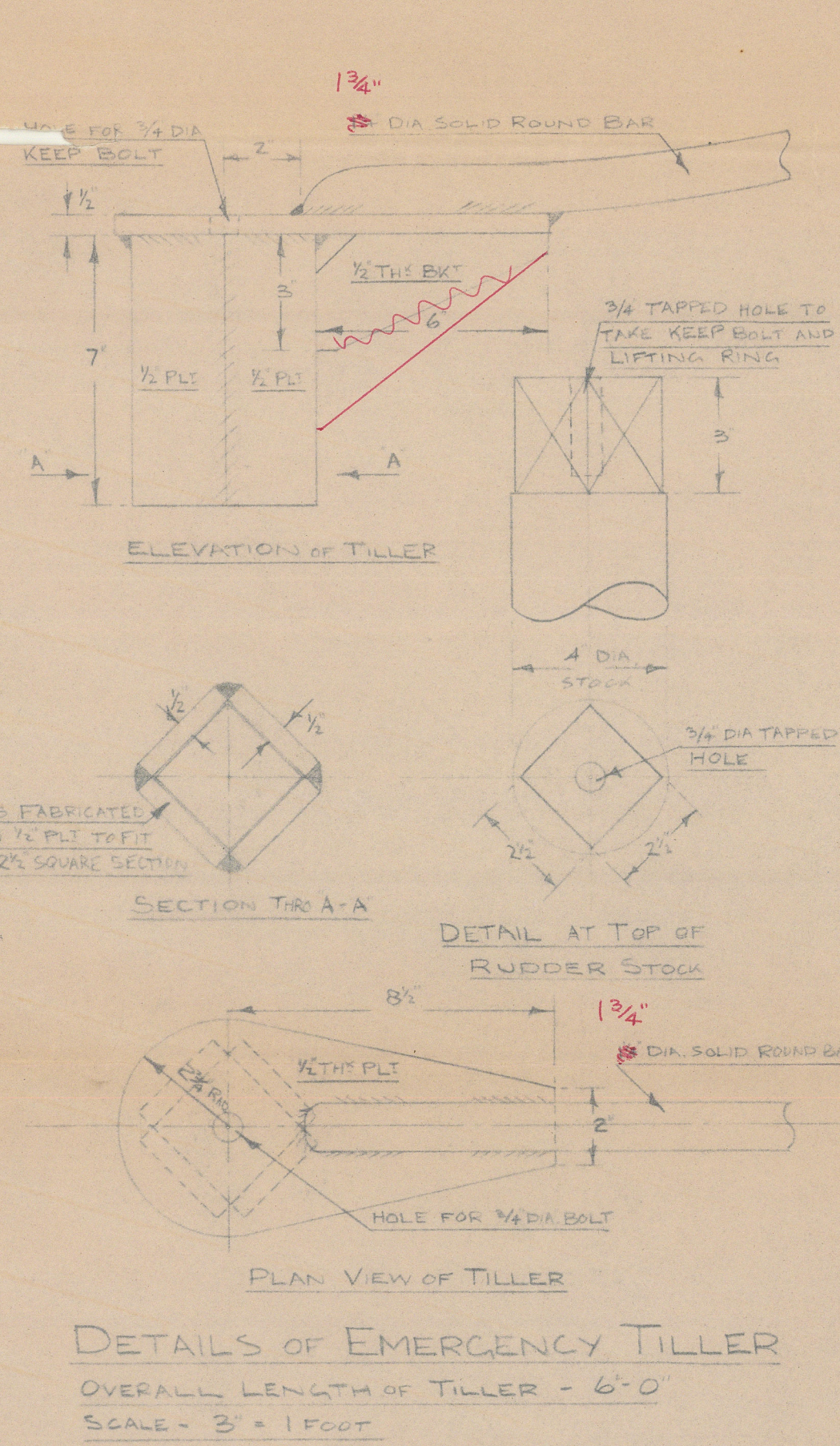
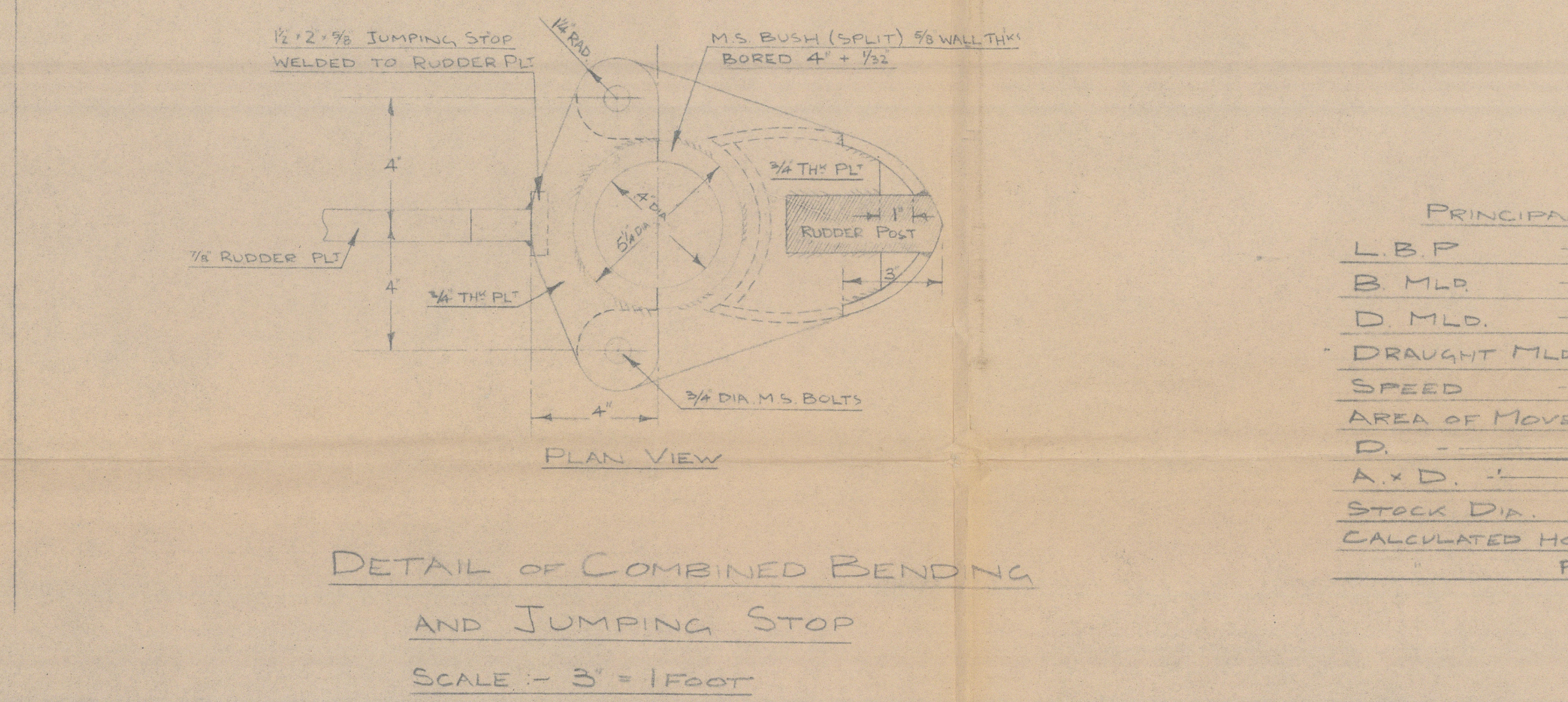
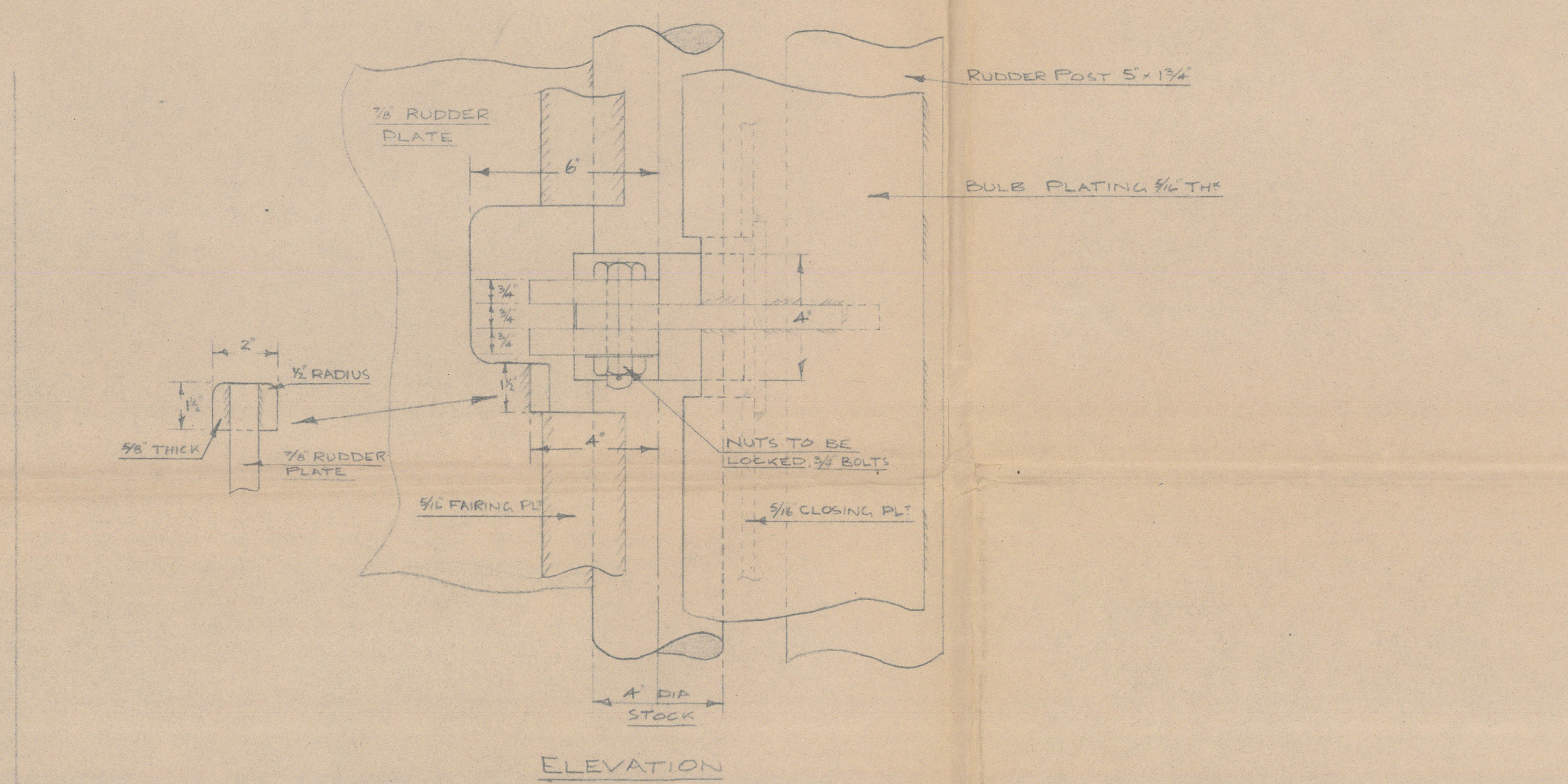
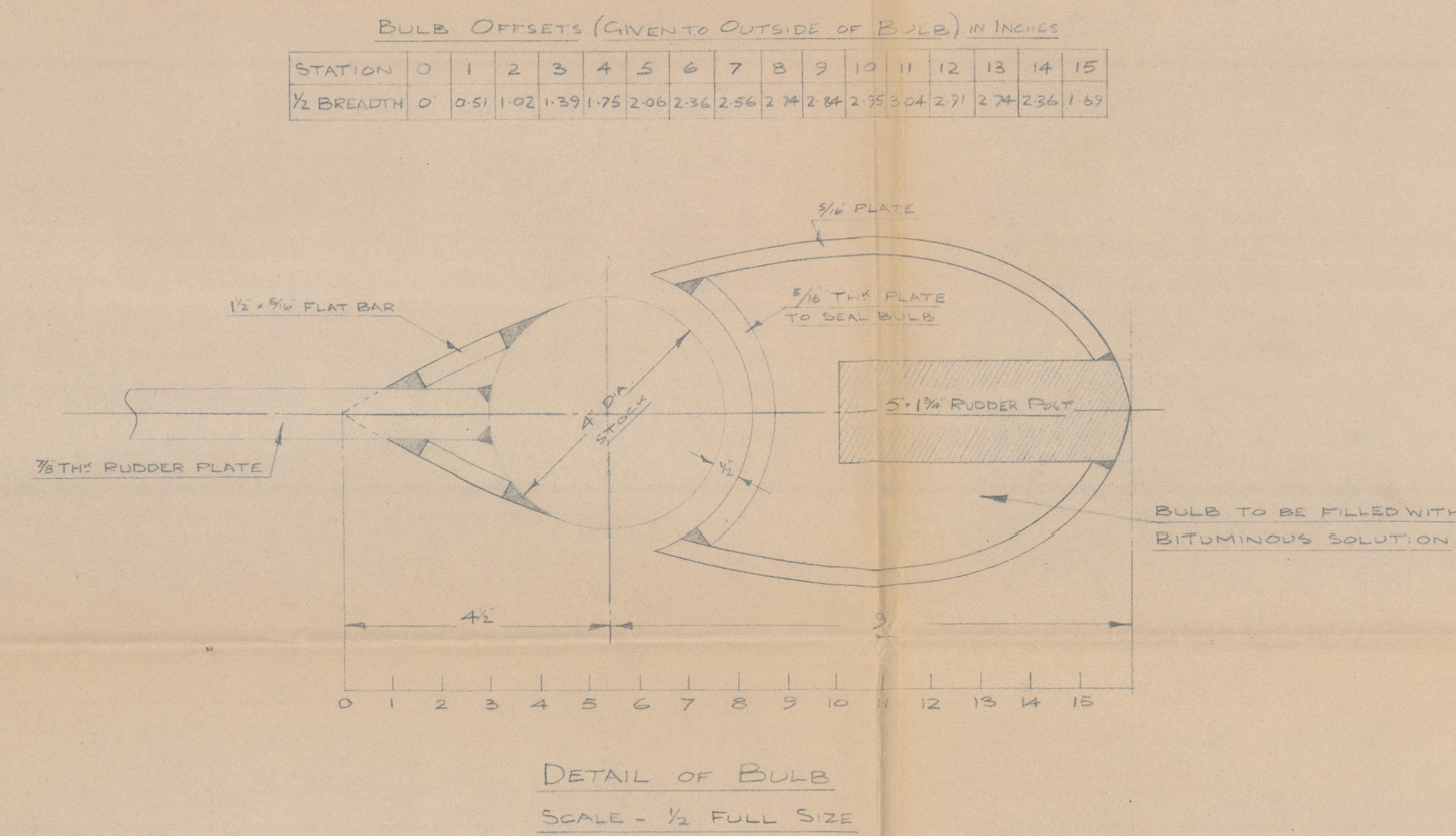
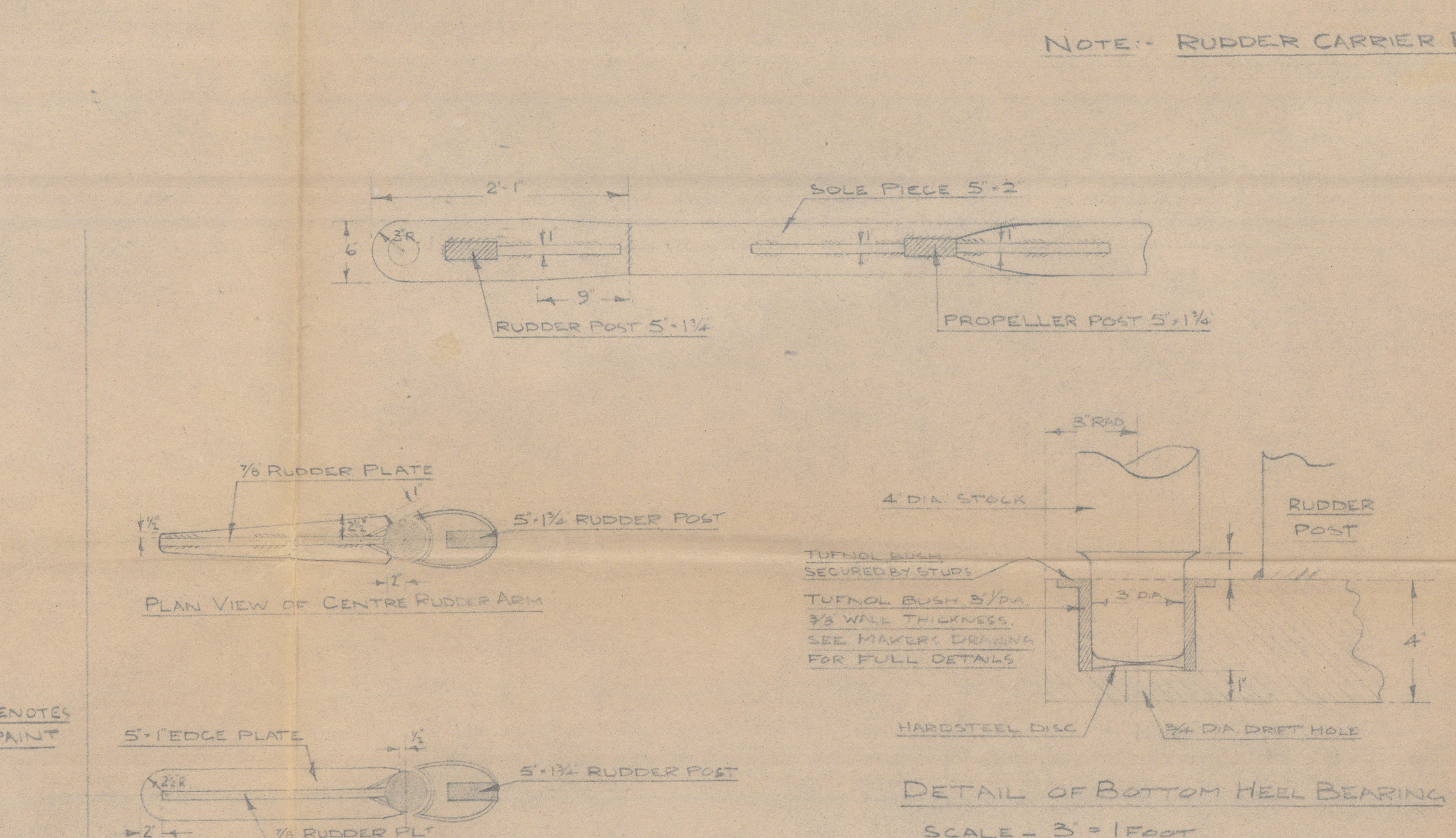
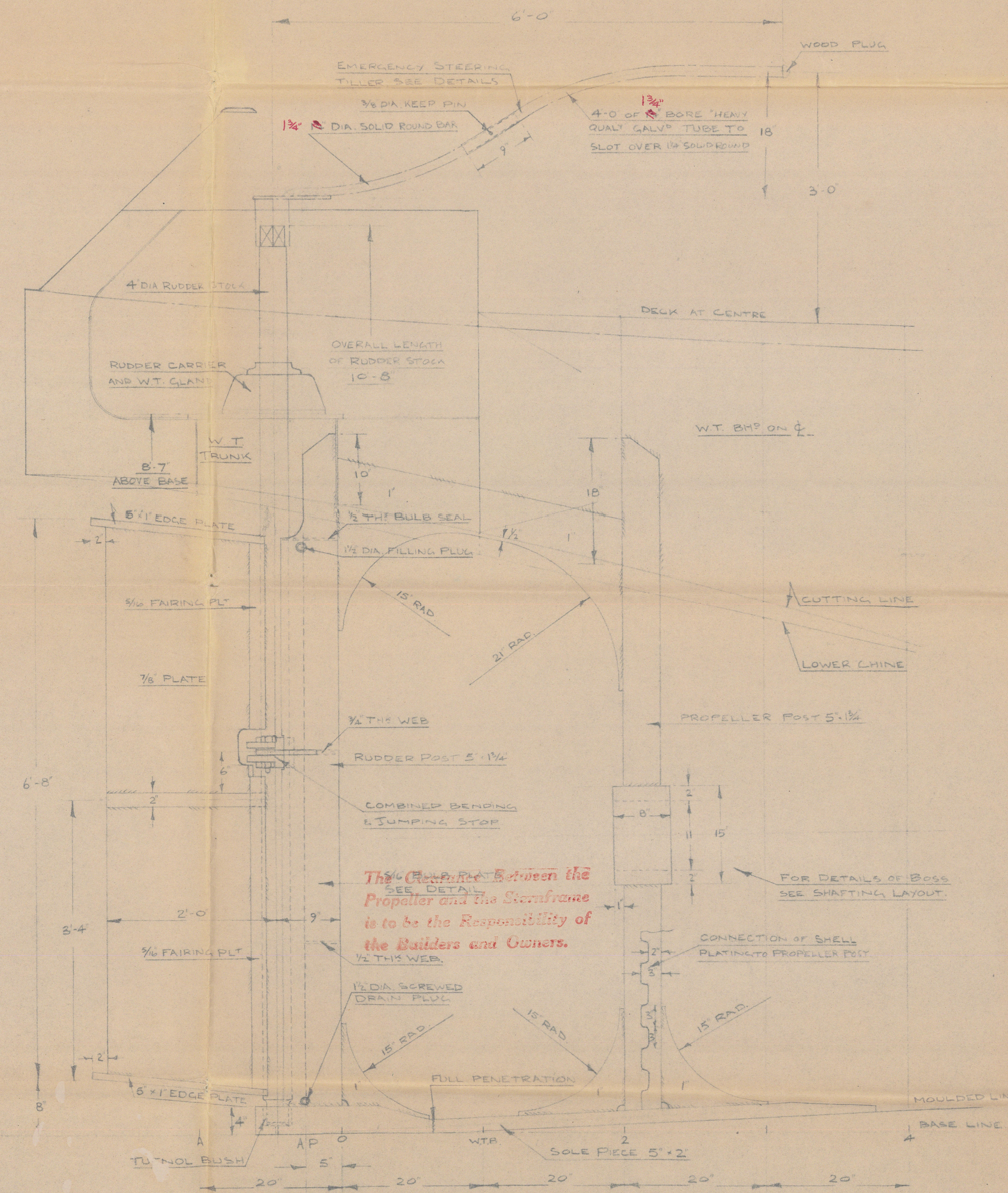
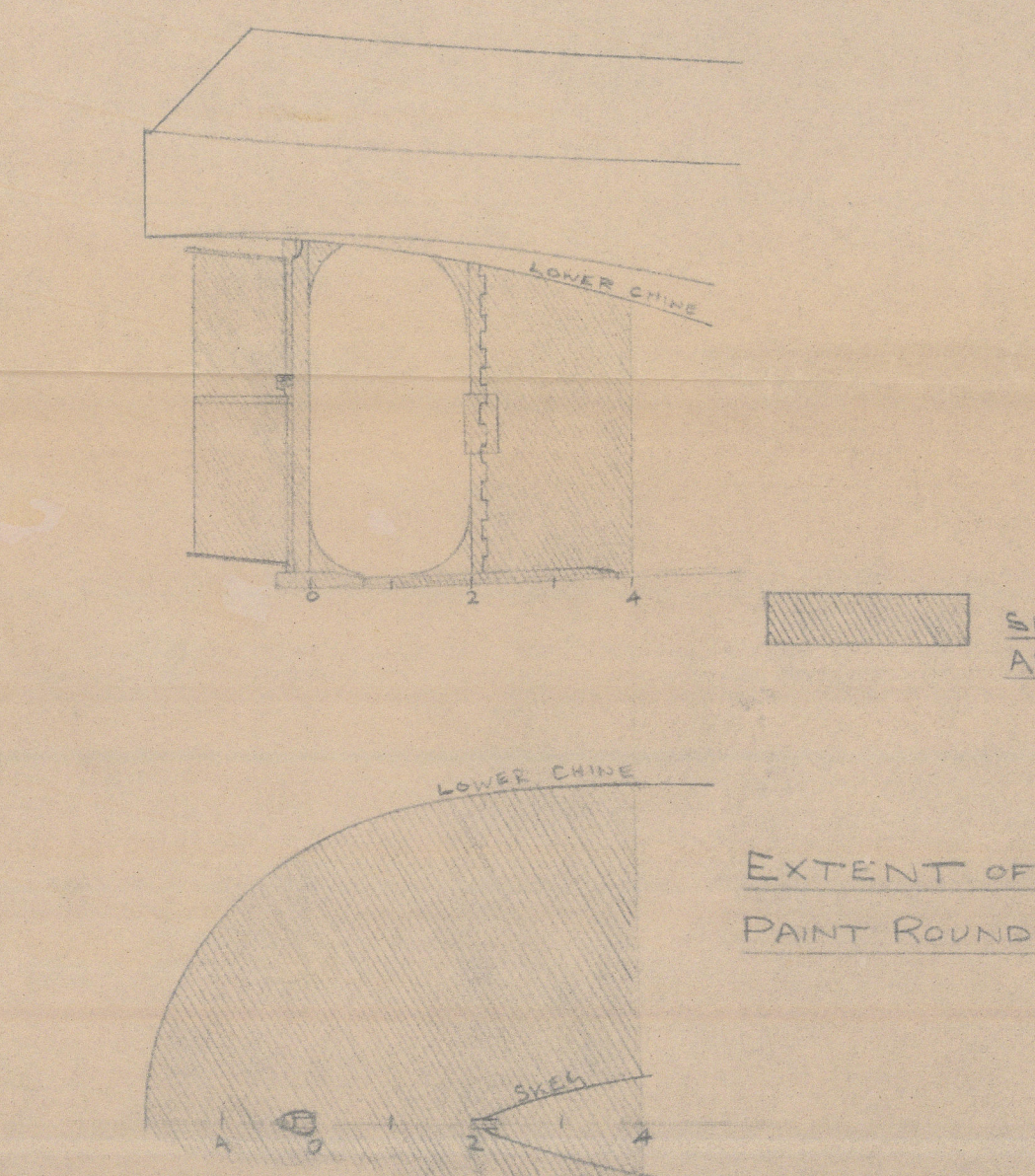


510011988
 SINGLE SCREW DIESEL TUG YARD NO 133-6
 RUDDER AND STERNFRAME DETAILS
 SCALE 1" = 1 FOOT AS SHOWN



WELDING NOTES
 CONNECTION OF BULB PLATE TO SHELL IS OF TYPE 'C'
 SHELL TO PROPELLER POST BE CASTELATED AS DETAILED
 ALL OTHER WELDS AS STANDARD WELDING DETAIL



PRINCIPAL DIMENSIONS

L.B.P.	56'-9"
B.M.L.	16'-10"
D.M.L.	7'-9"
DRAUGHT M.L.D.	6'-2"
SPEED	9.85 KNOTS
AREA OF MOVEABLE PORTION OF RUDDER	13.4 SQ. FT.
D.	1'-0"
A x D.	13'-4"
STOCK DIA.	4 INCHES
CALCULATED HOLDING TORQUE	0.83 MTONS
PEAK TORQUE	1.86 MTONS

SEAWORK LTD. (WESTERN DIVISION) APPLIEDORE, N. DEVON.			
TITLE:- RUDDER & STERNFRAME DETAILS	DRG. No:-A 9 Y/N 133-6		
DRAWN:- M.T.	CHECKED:-	APPROVED:-	DATE:- 21-10-60

RUDDER & STERNFRAME

P.K. HARRIS & SONS LTD.
APPLEDORE - YARD NOS.

133, 4, 5 & 6

+ - *
"ALICE" "AGATHA" "AUREY"
- x
+ "AGNES."

PLY. RRT. NOS. 8848,
8853, 8854 & 8860.

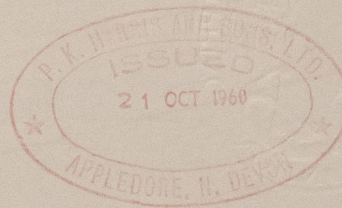
RECORDS DEPT..
LONDON.



© 2021

Lloyd's Register
Foundation

010874 - 010881 - 0124



"THIS DRAWING IS THE PROPERTY OF
P. K. Harris & Sons Ltd.
AND MUST NOT BE COPIED OR USED
FOR ANY PURPOSE WITHOUT THEIR
WRITTEN CONSENT."

010874-010881-0124



© 2021

Lloyd's Register
Foundation