

**No 892.**

# **STEM, STERN POST & RUDDER PLAN.**

**SCALES -  $\frac{1}{2}$ " 1" & 3" = 1 FOOT.**

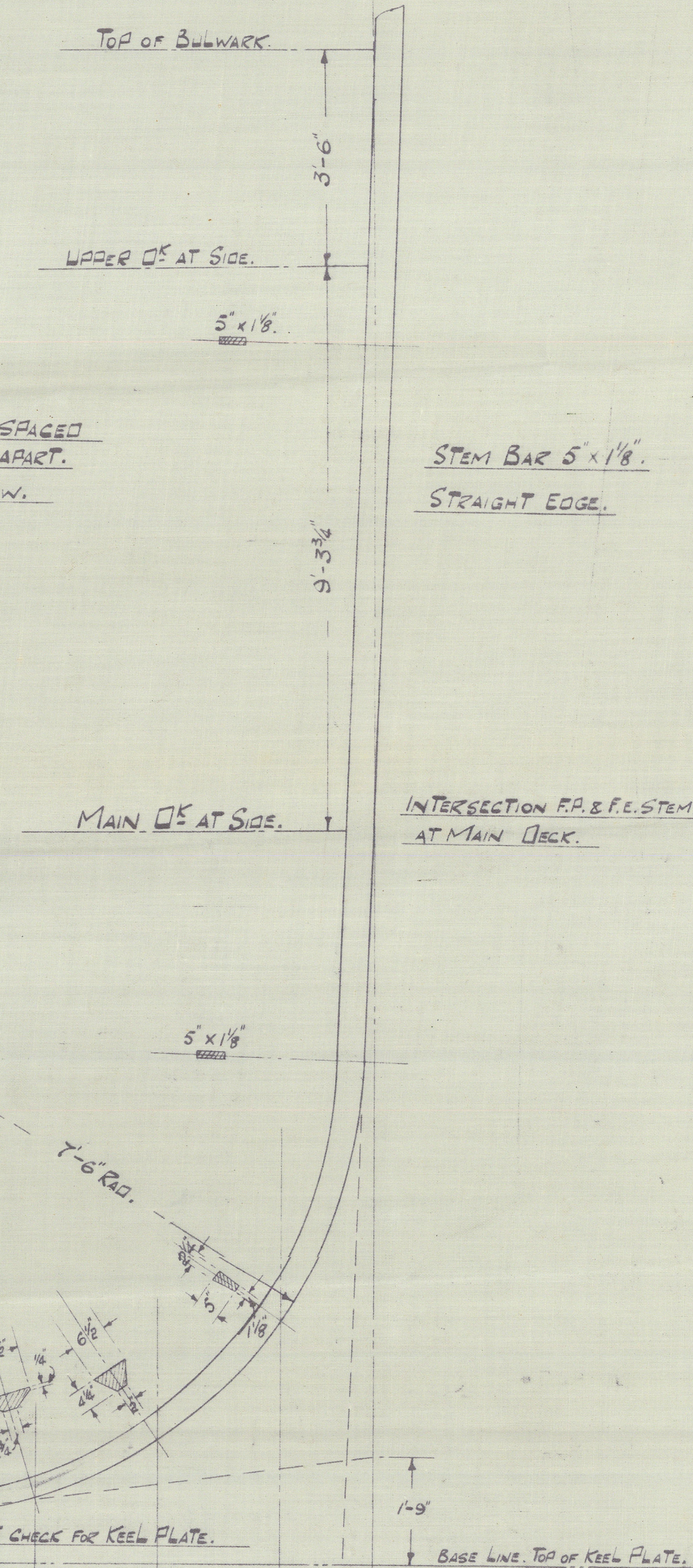
MATERIAL TO BE OF BEST FORGED SCAFF IRON TO BRITISH CORPORATION TESTS, & REQUIREMENTS.

26.1.21

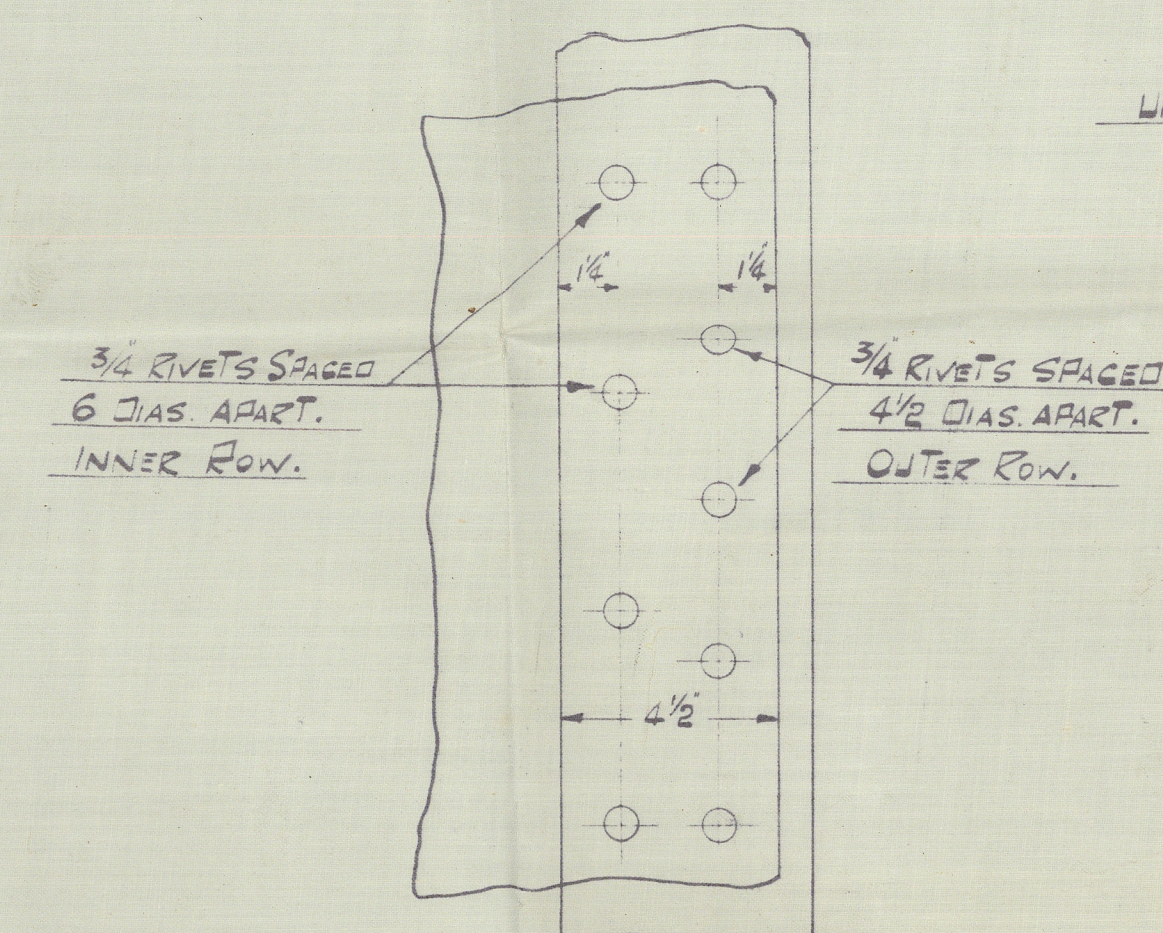
British Corp. 20. 6. 20. 1 W.L.  
11. 6. 20. 3  
11. 6. 20. 25 6. 20. 1. 13  
11. 6. 20. 1. 13  
11. 6. 20. 1. 13

Verdeum. 5. 20. 1 W.L.  
11. 6. 20. 1. 13  
11. 6. 20. 1. 13  
11. 6. 20. 1. 13

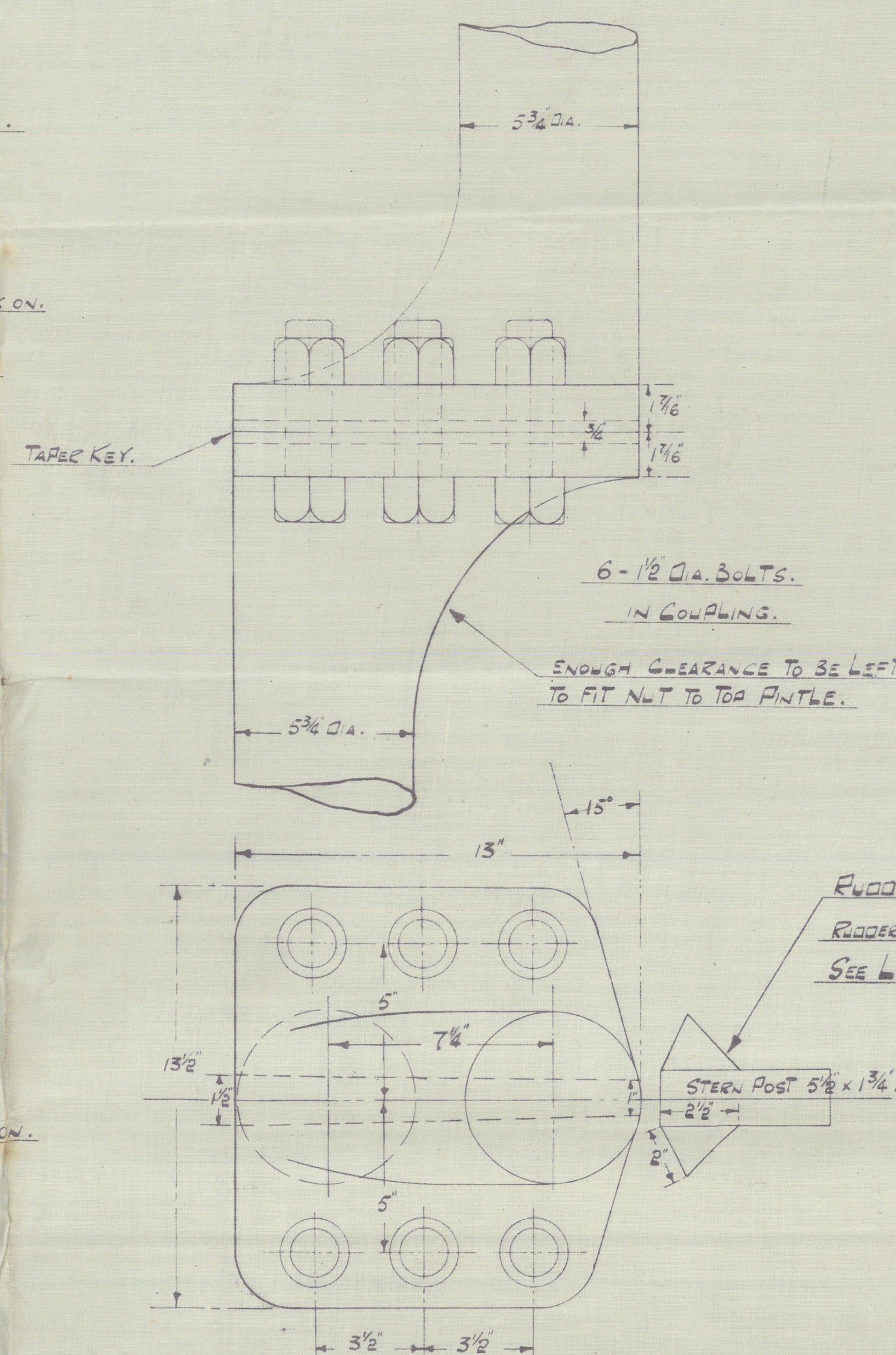
**DETAIL OF STEM.**  
SCALE -  $\frac{1}{2}$ " = 1 FOOT.



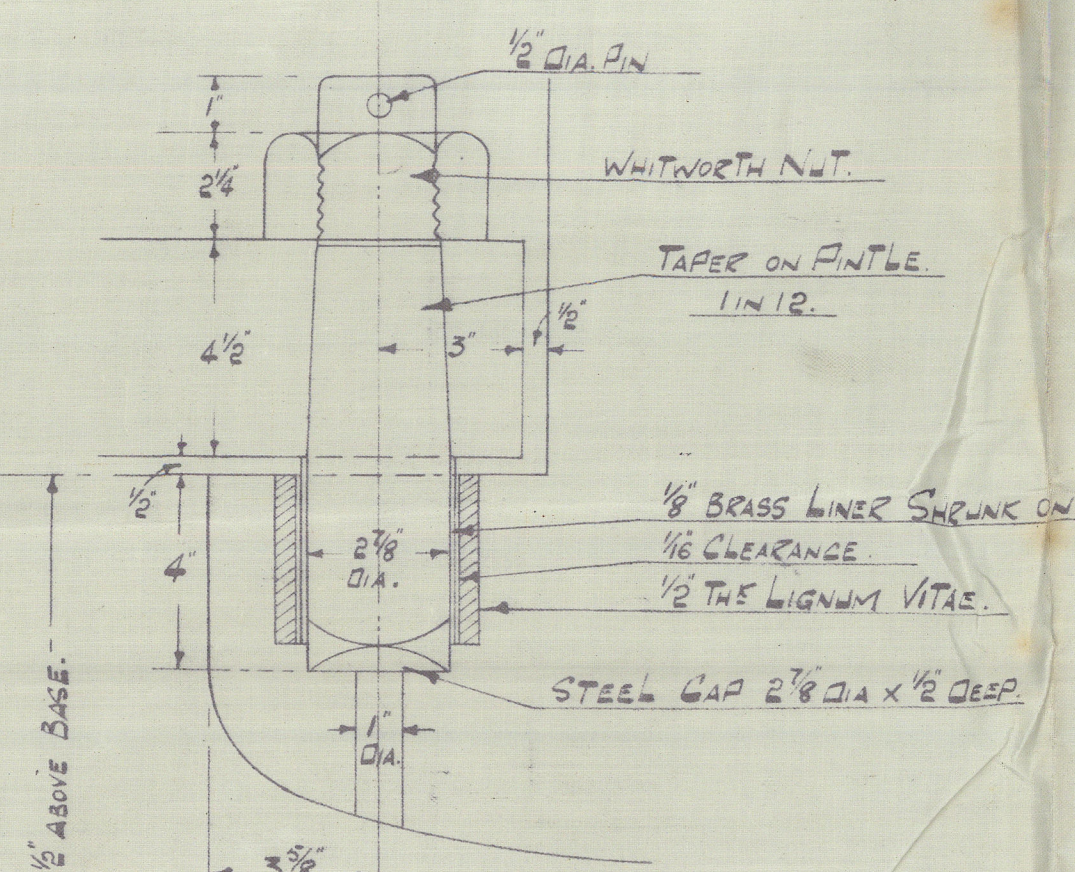
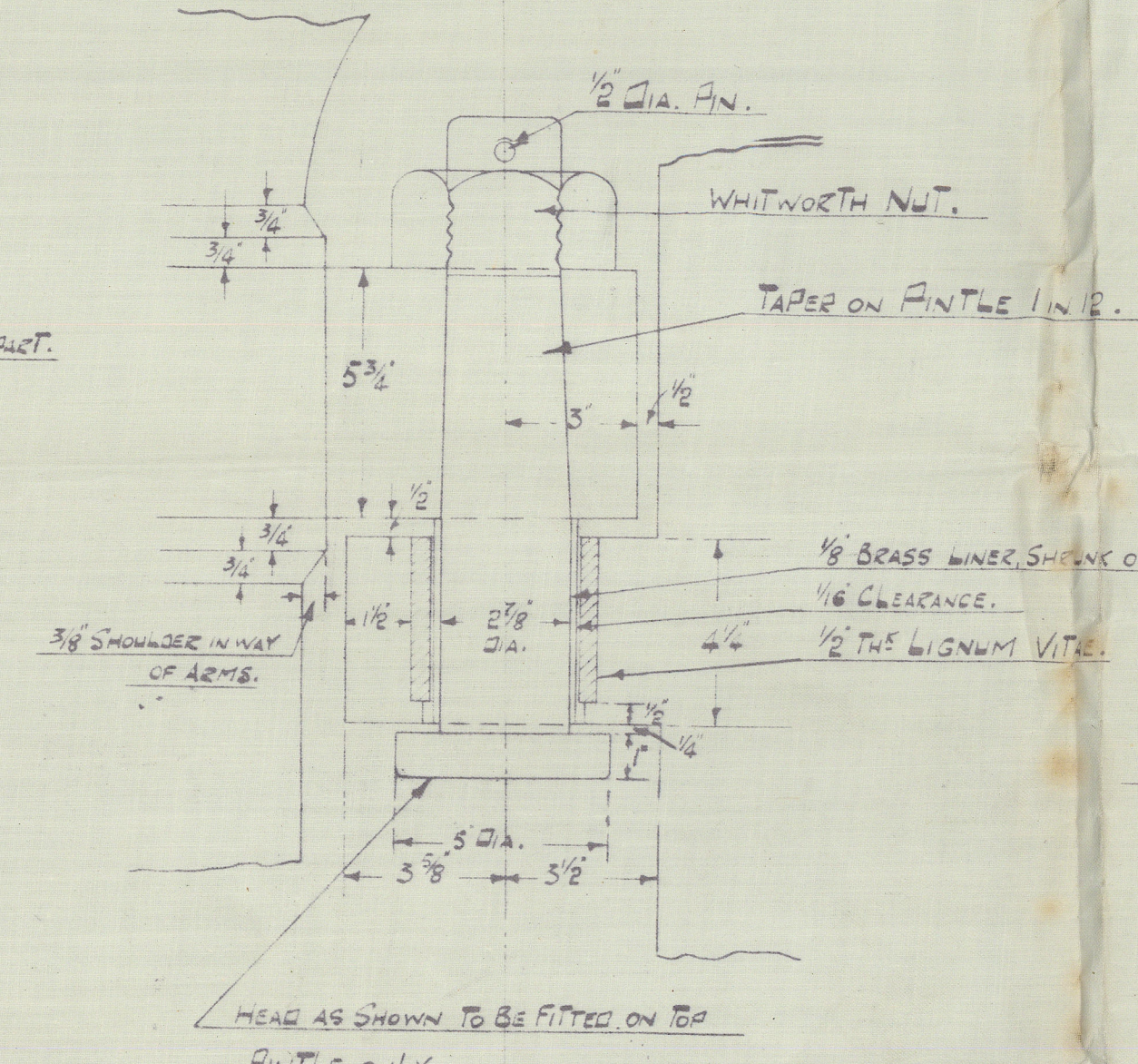
**RIVETING OF SHELL TO STEM.**  
SCALE 3" = 1 FOOT.



**DETAIL OF COUPLING.**  
SCALE - 3" = 1 FOOT.

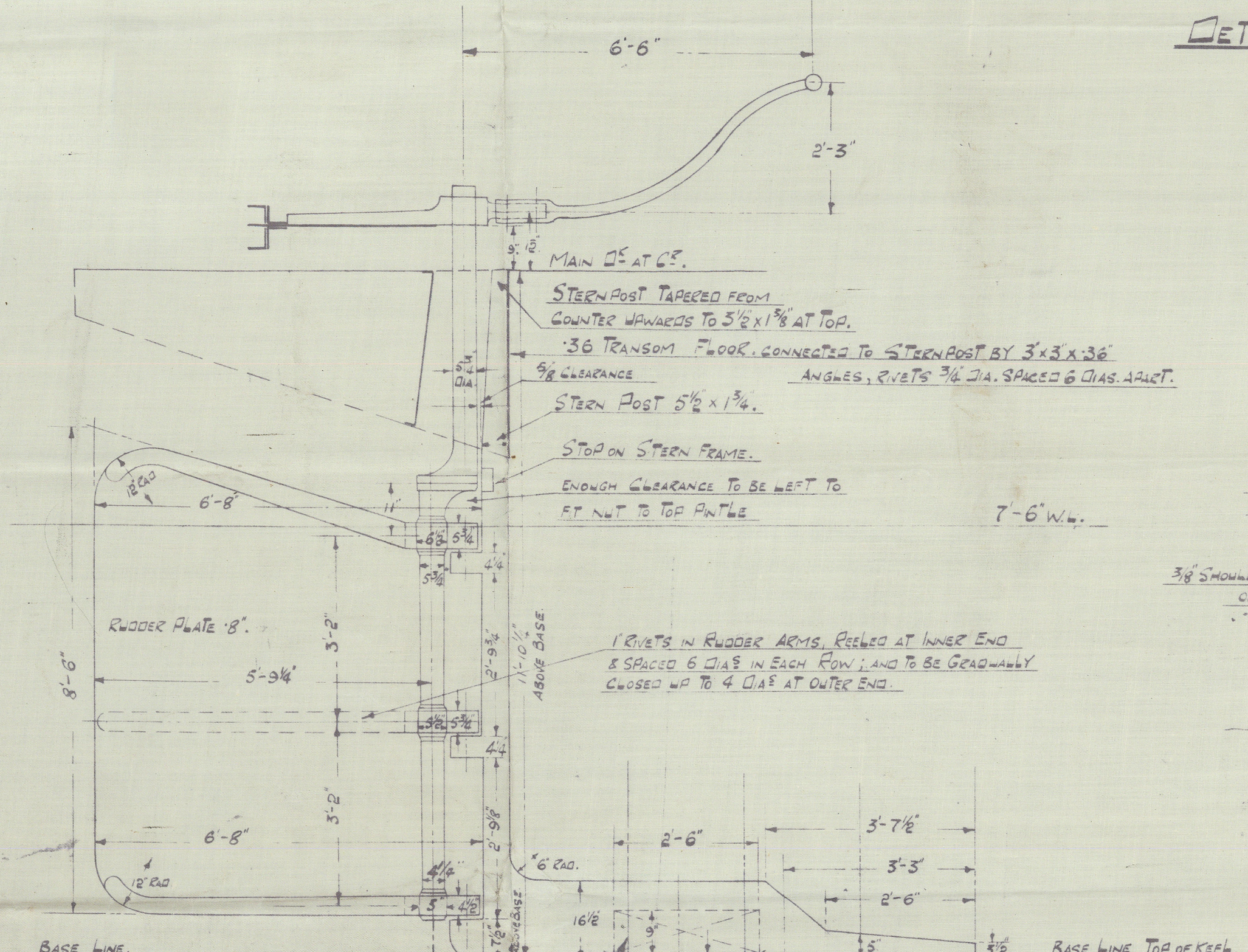
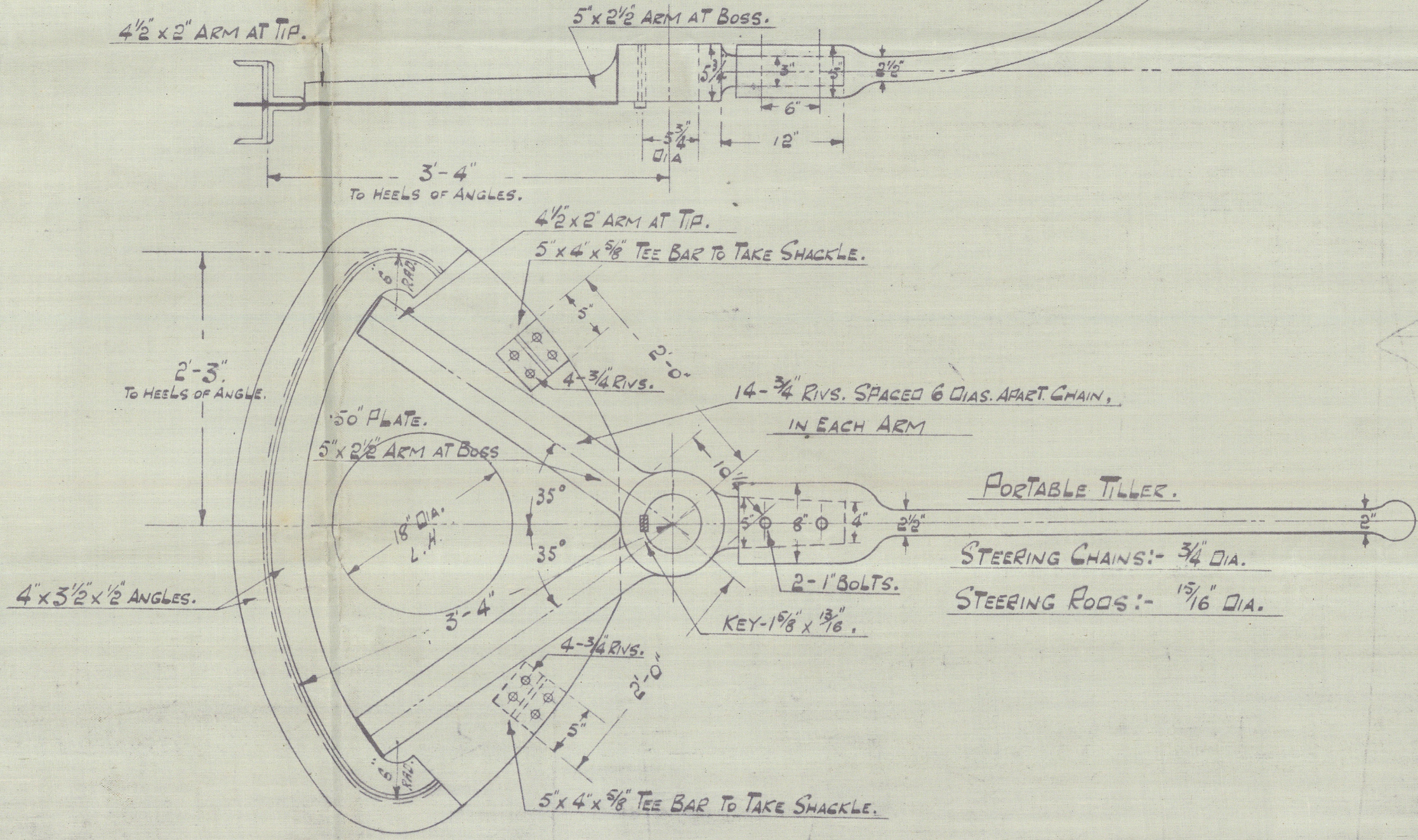


**DETAIL OF TOP ANGLE.**  
SCALE - 3" = 1 FOOT.

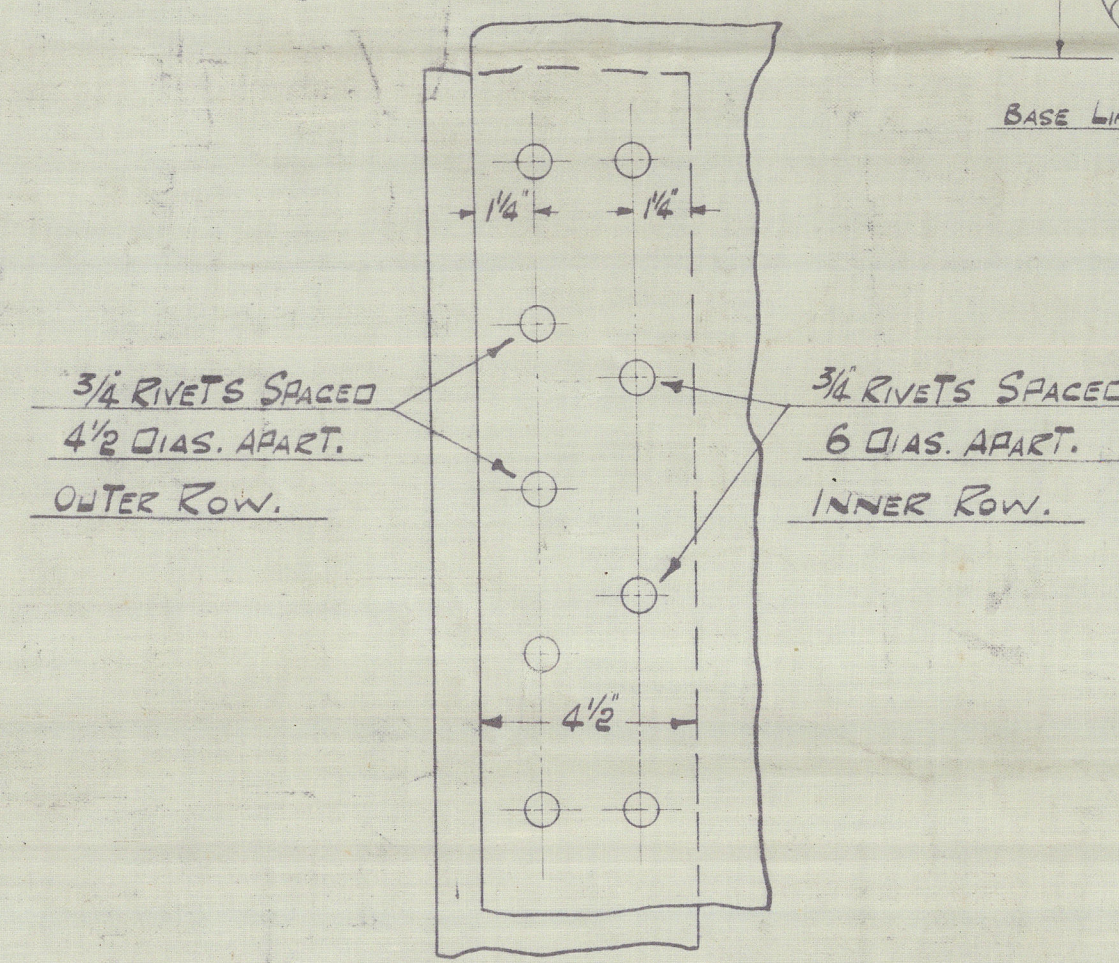


**DETAIL OF BOTTOM ANGLE.**

**PLAN OF QUADRANT.**  
SCALE - 1" = 1 FOOT.

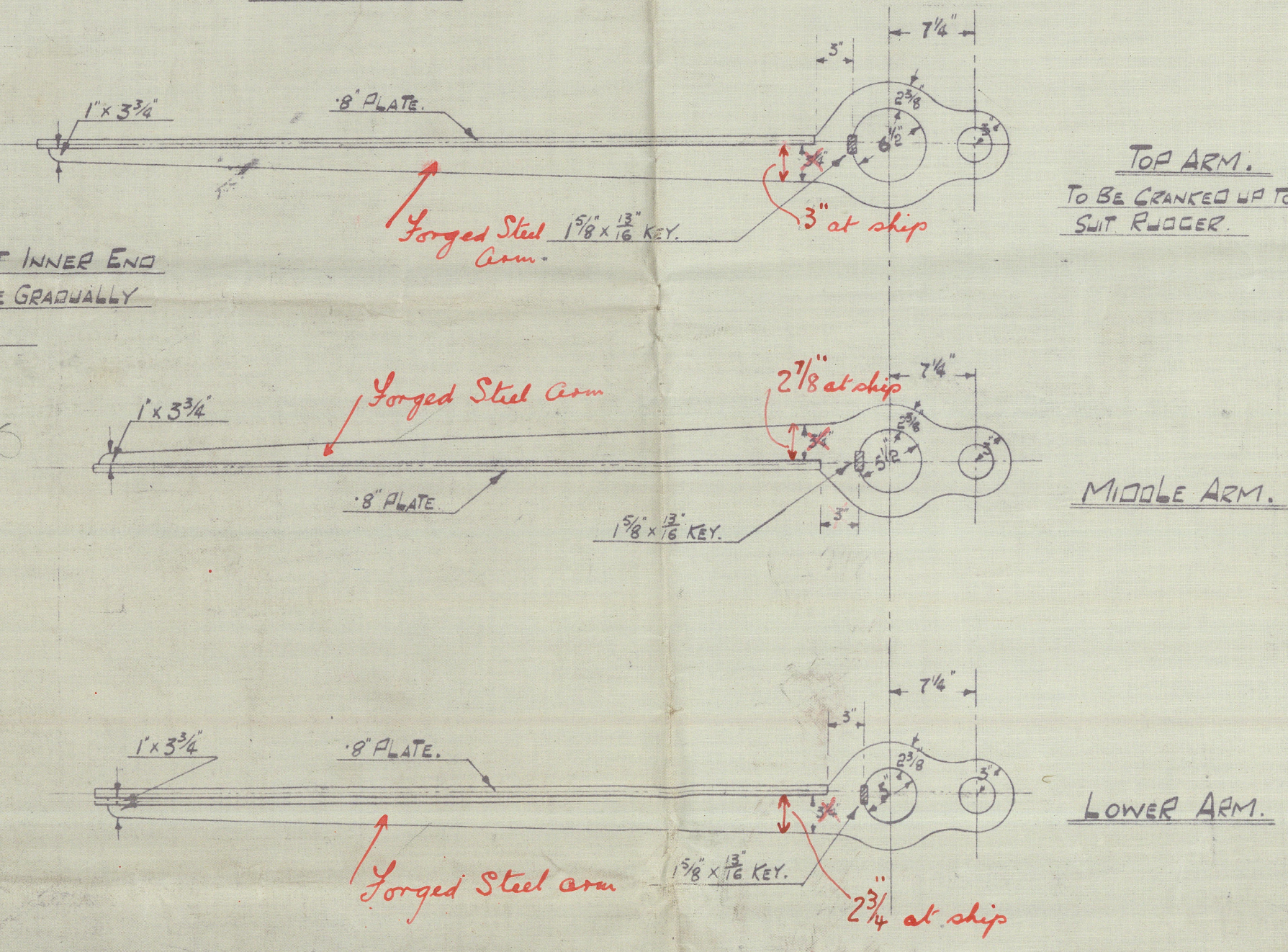


**RIVETING OF SHELL PLATING TO STERN FRAME.**



NOTE: RIVETING OF SHELL TO STERN FRAME IN WAY OF SHARP BRACKET PLATES, 3/4 DIA. SPACED 4 1/2 DIAS. APART, IN INNER & OUTER ROWS.

**DETAILS OF ARMS.**  
SCALE - 1" = 1 FOOT.



CAMMELL LAIRD & CO LTD  
BIRKENHEAD.  
FOR ENCLOSURE TO  
British Corporation  
DATE 20.1.21.  
SHIP DEPARTMENT.

CHARLES  
KINGSMOOD

Cammell Laird & Co<sup>l</sup>

892

Rudder & Stemframe.

**KINGSWOOD**

**ex**

31  
24. 1 21.

**TSS**

25

**SHIRLEY**



© 2021

010874 - 010881 - 0123  
Lloyd's Register  
Foundation