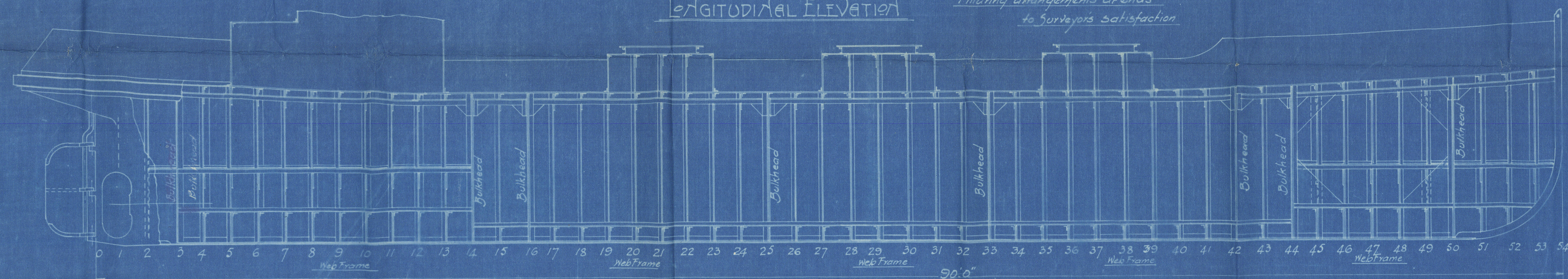
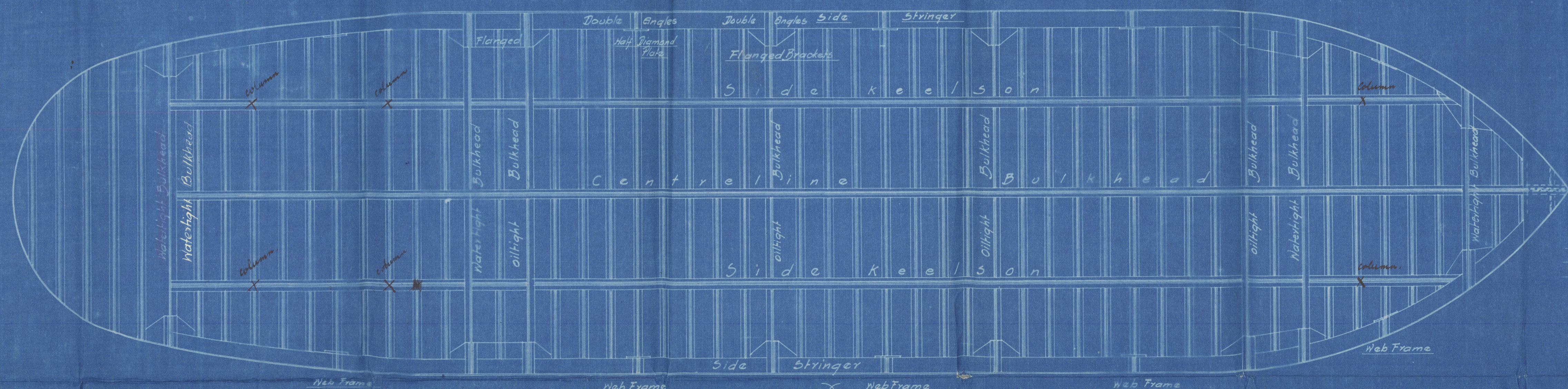


LONGITUDINAL ELEVATION
Pillaring arrangements attend to surveyors satisfaction

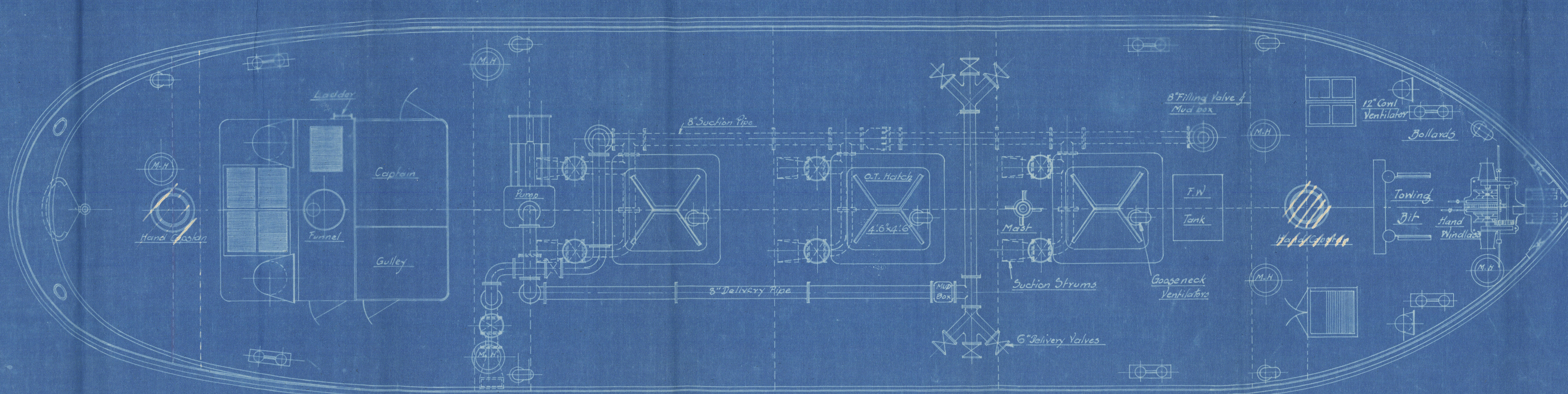


SECTIONAL ELEVATION



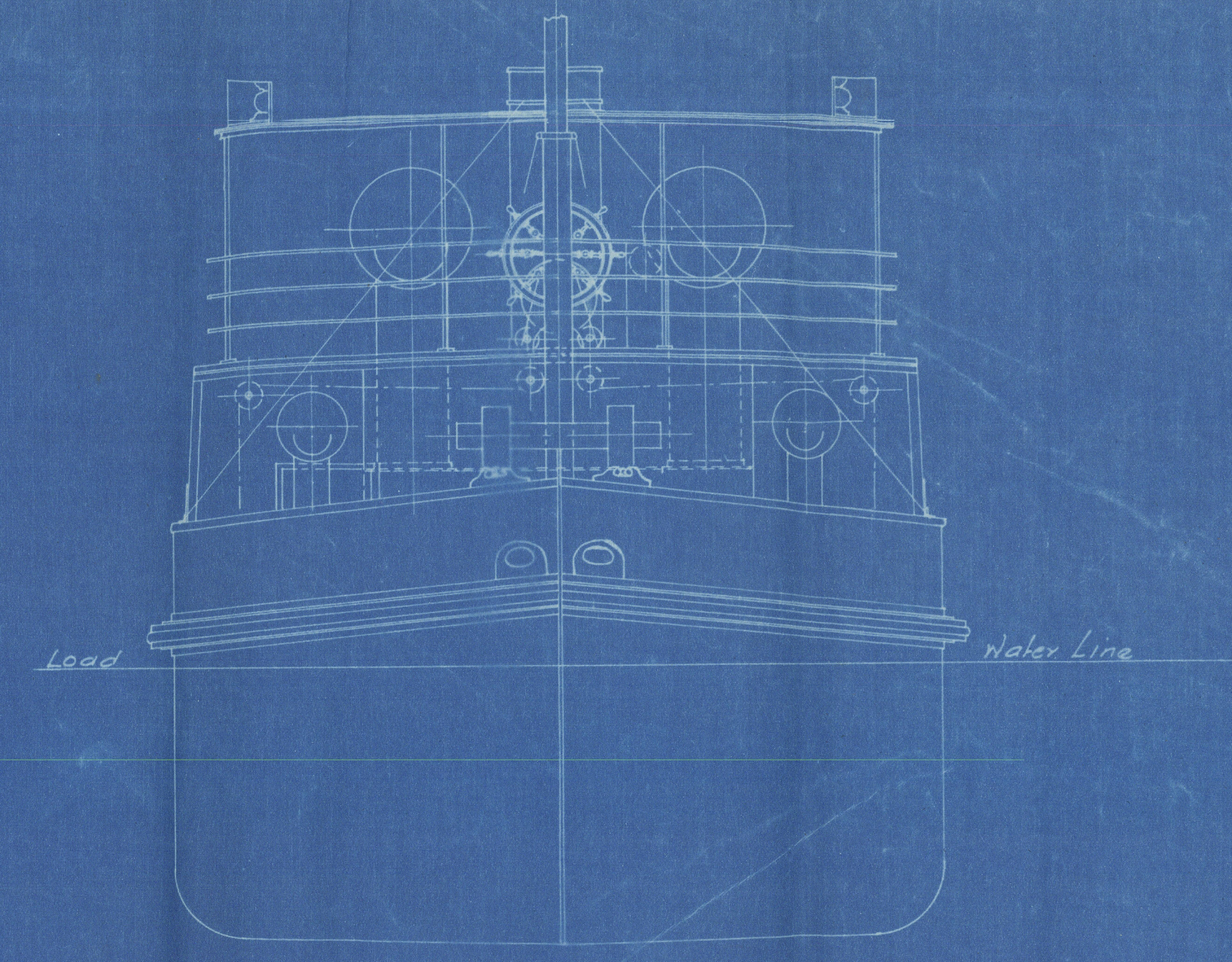
SECTIONAL PLAN

Provision to be made for ascertaining the depth of oil in the large tanks.

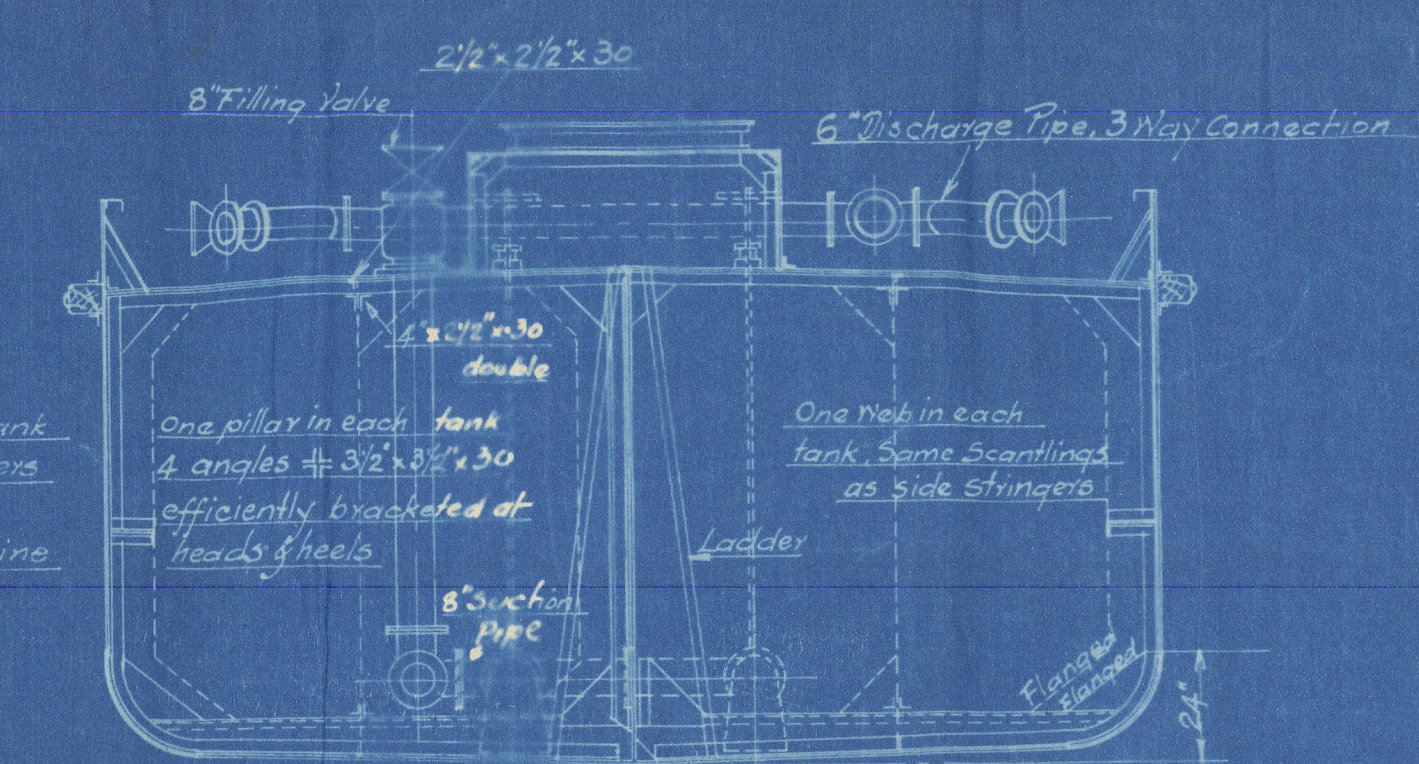


PLAN

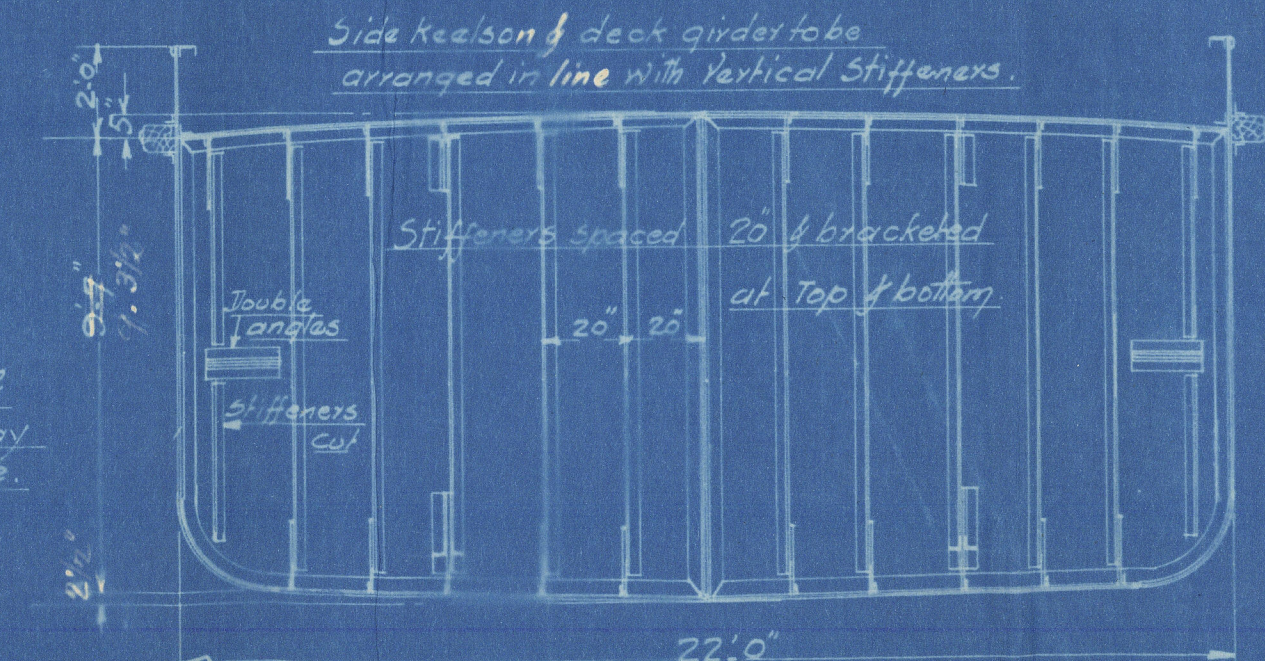
Note: For correct drawing of Pumping Arrangement Refer to Plan No 26.C.705 of 13.10.26



FRONT VIEW



MIDSHIP SECTION



VIEW OF TRANSVERSE BULKHEAD

PARTICULARS OF BARGE	
Stem	5" x 1/4"
Stem Frame	5 1/2" x 2 3/4"
Rudder Post	3 1/2" diam
Hull Plate	3/8" thick
Sheer Strake	1 1/2"
Keel Plate	3/8" x 1/2" thick
Floors (Tanks)	12" deep x 5/16" plate
Fore Peak	24"
After Peak Bulkhead	24"
Boiler Space Floor	1/2" chequered plate
Chain Lockers	1/8" plate
Deck plate	5/16"
Bulwark Strake	3/16"
Centreline Bulkhead	28"
Transverse	28"
Side Keelson	3" x 3" x 1/4" double fl.
Intercostals	15" deep x 1/4" plate, 2 1/2" x 2 1/2" x 31 angle for shell plating
Centre	Angles
Side Stringers	12" x 2 1/2" x 30 fl. One web frame in each tank at ends, of same scantlings
Deck Beams to every frame	4" x 2 1/2" x 30 fl. on every frame, with quarter girders
in way of Oil Tanks	4" x 2 1/2" x 30 fl. on every frame, with quarter girders
Main Frames	3" x 2 1/2" x 30 fl. Spaced 20"
Reverse Frames	2 1/2" x 2 1/2" x 14 fl.
Bulkhead Stiffeners	5" x 3" x 3/4" Bulb Angle
Fender Angles	3" x 3" x 3/8" fl.
Deck	2 1/2" x 2 1/2" x 1/4" fl.
Deck Stringers	3" x 3" x 1/4" fl.
Hood Fender	8" x 7" Teak on felt

DIMENSIONS	
Length B.P.	90.0"
Breadth Moulded	22.0"
Height - do -	9.10" 9.6"
Draft Loaded	8.8" 8.6"

MESSRS. ASIATIC PETROLEUM CO. (CEYLON) LTD.
200 TON OIL BARGE
Scale 1/4" = 1 Foot.
28.12.25

W. S. & Co. LTD.
COLOMBO.

DRAWING No 3384
TRACING DRAWER C.P.
DATE 28.12.25

as constructed
S. C. M. S.
Colombo
16/11/26.

200 Ton Oil Barge

General arrangement
(as built)

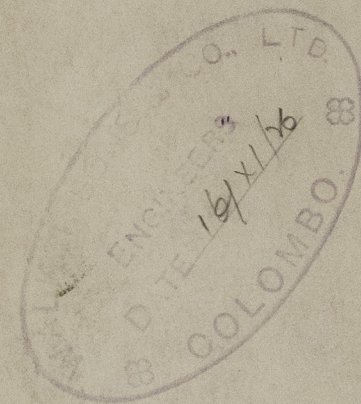
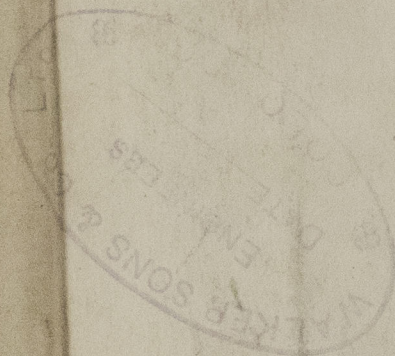
Mr Melton

Barge Mahawoli

built 1926

CBO RPT

No. 496



010824- 010834- 02143



© 2021

Lloyd's Register
Foundation