

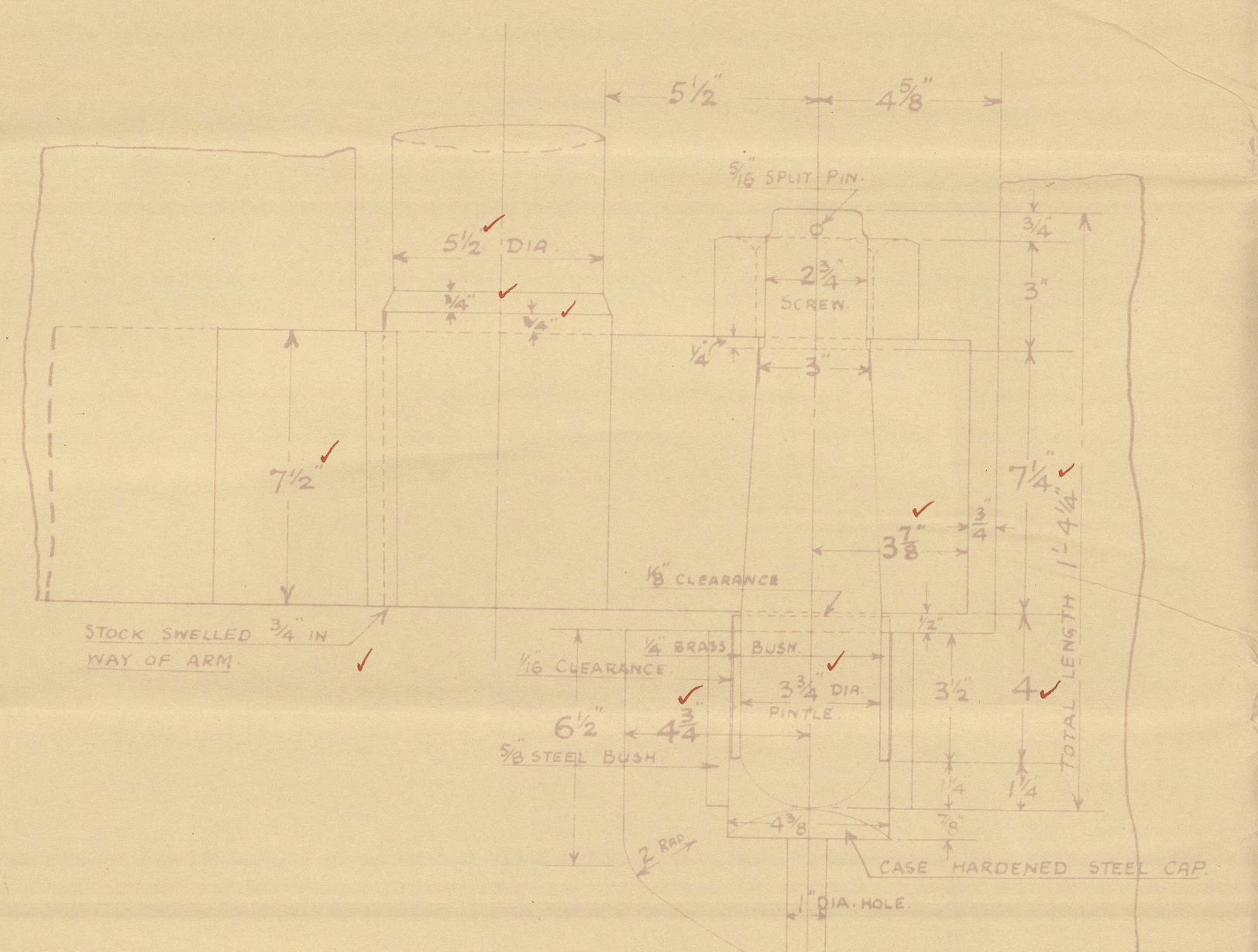
TOP PINTLE & GUDGEON.

MATERIAL.

STERNPOST OF BEST SELECTED FORGED SCRAP IRON WITH GUDGEONS FORGED ON SOLID & BORED FOR PINTLES.

RUDDER OF BEST SELECTED FORGED SCRAP IRON WITH ARMS SHRUNK AND KEYED ON TO MAIN STOCK AND BORED FOR RUDDER PINTLES.

PINTLES OF STEEL, TAPERED INTO ARMS, LINED WITH 1/4 BRASS, TURNED & FITTED AS SHOWN.



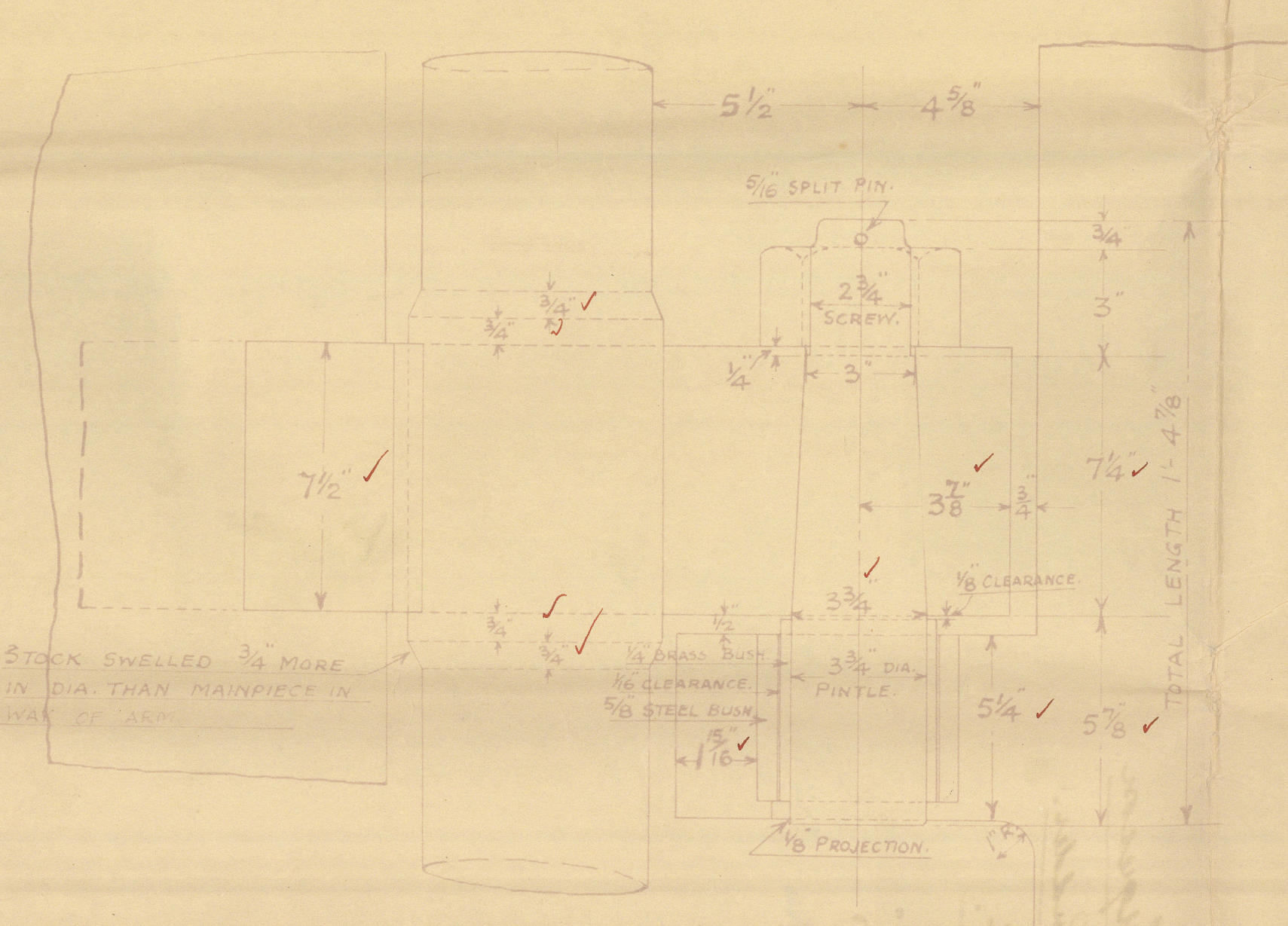
BOTTOM PINTLE & GUDGEON.

HOLE BORING.

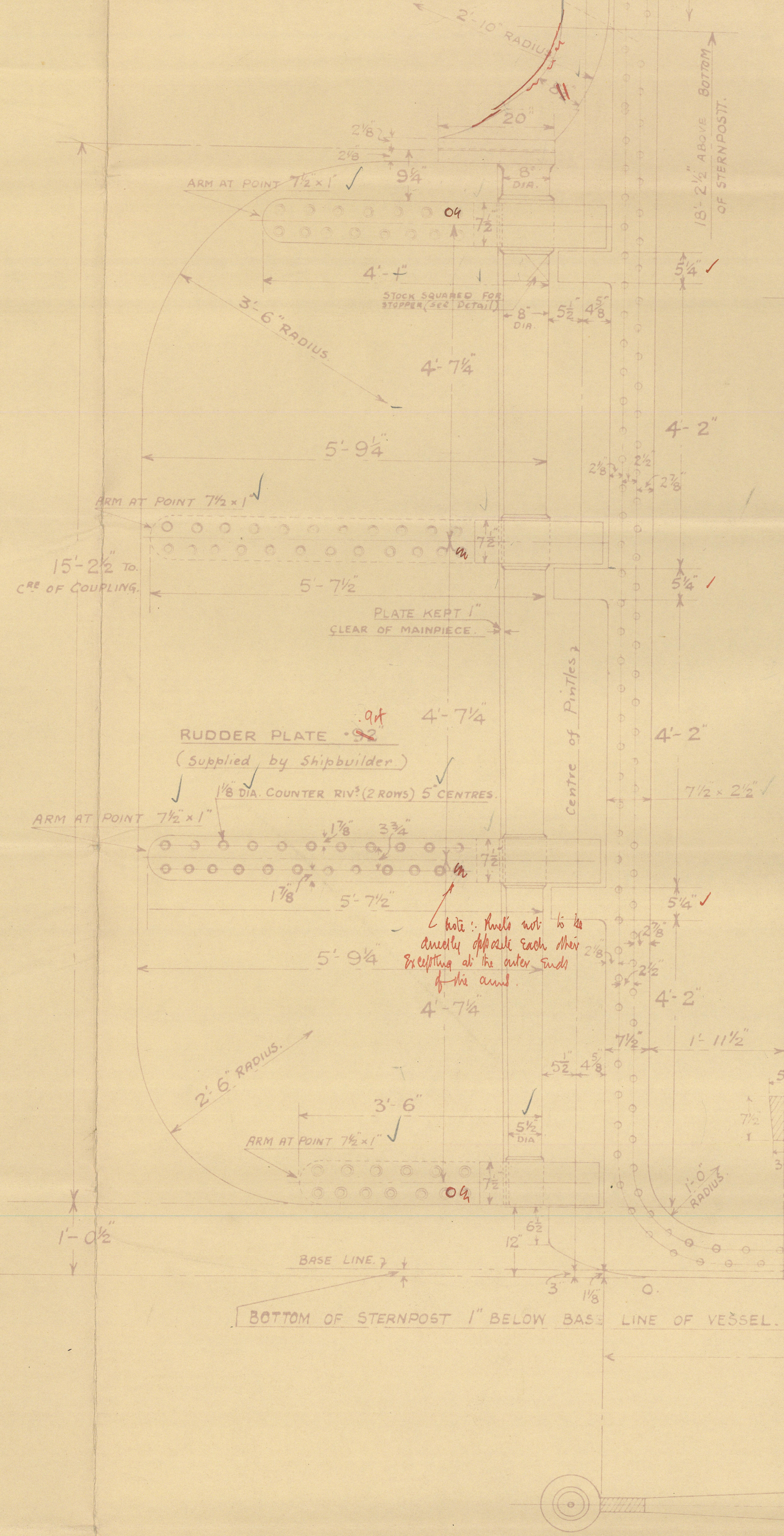
HOLES IN RUDDER ARMS 1 3/8 DIA. SPACED 5" APART CTR'S COUNTERSINK ON OUTSIDE.

HOLES IN STERNPOST BELOW COUNTER LINE 1 1/8 DIA. SPACED 5" APART, CENTRES.

HOLES IN STERNPOST ABOVE COUNTER 1 3/8 DIA. SPACED 3 3/8" & 4 1/2 CENTRES.



INTERMEDIATE PINTLES & GUDGEONS.



STERNPOST & RUDDER.  
DREDGER No 494.

TO CLASS AT LLOYDS 100 A.I. HOPPER DREDGER

SCALES: - 3/4" = 1 FOOT & DETAILS: 3" = 1 FOOT.

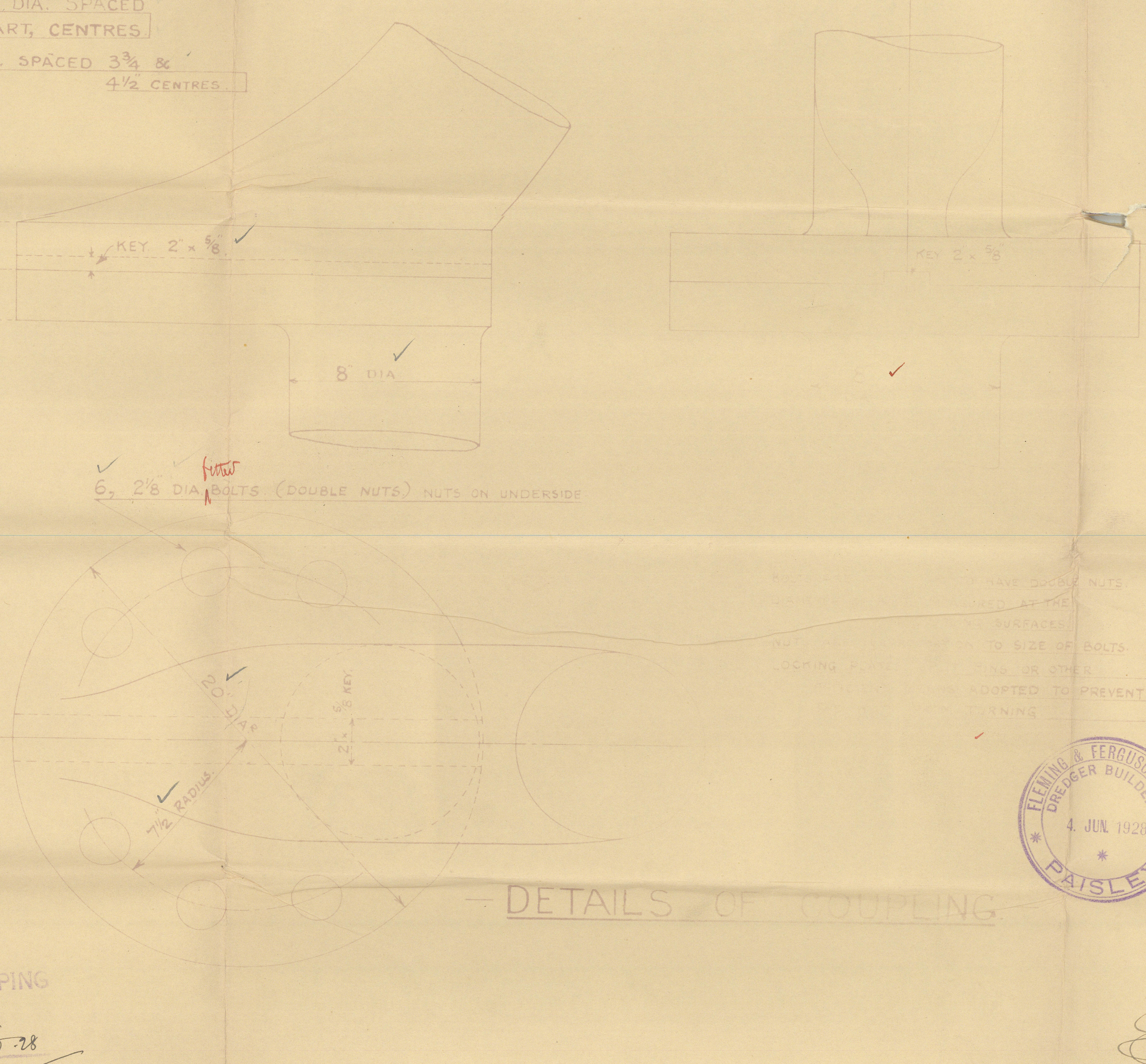
LLOYDS NUMERAL A x D = 82.5 x 3.15 = 259.8

SPEED UNDER 10 KNOTS.

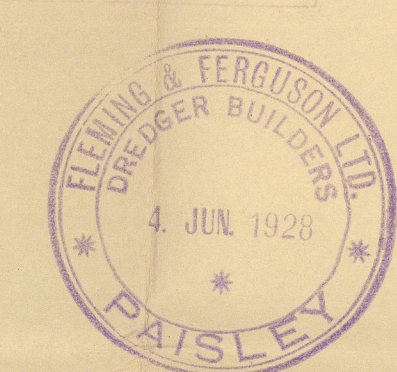
RUDDER STOCK BY RULE = 7 1/2" (INCREASED TO 8")

APPROVED  
LLOYDS REGISTER OF SHIPPING

DATE 12. 6. 28



DETAILS OF COUPLING.



494  
10  
11 JUN 1928



Henning & Ferguson.  
Shipport & Rudder.  
N<sup>o</sup> 494.

"OTAKOU"

GLASGOW REPORT No 49482



© 2021

Lloyd's Register  
Foundation

010783-010790-0055