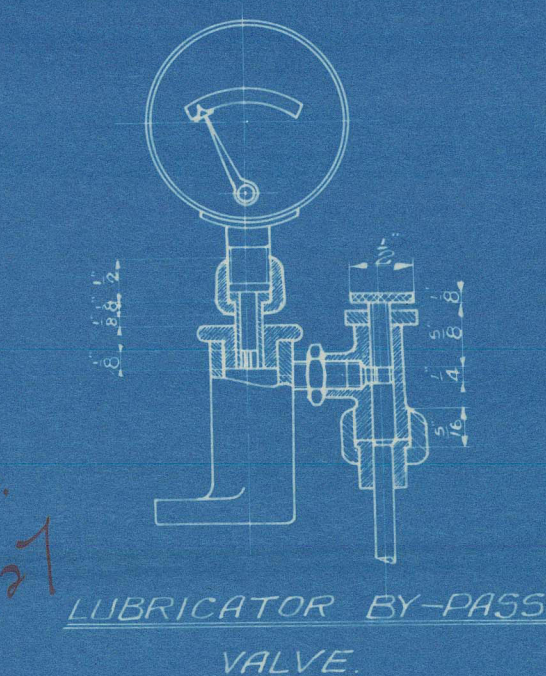
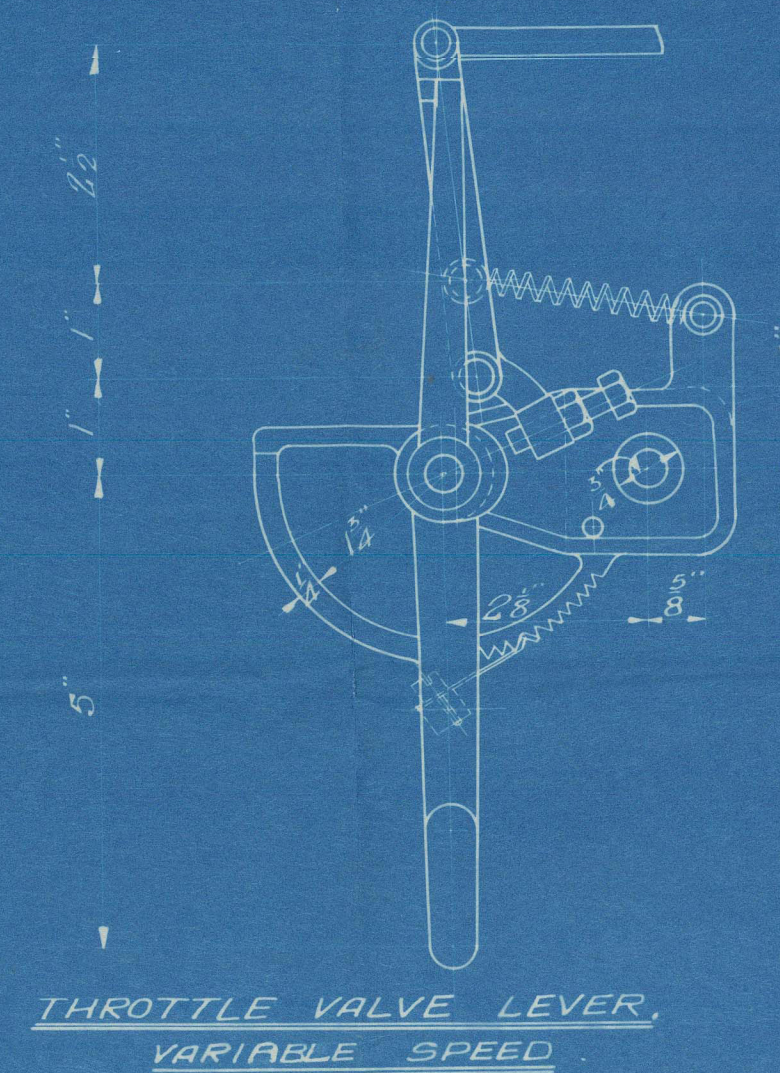
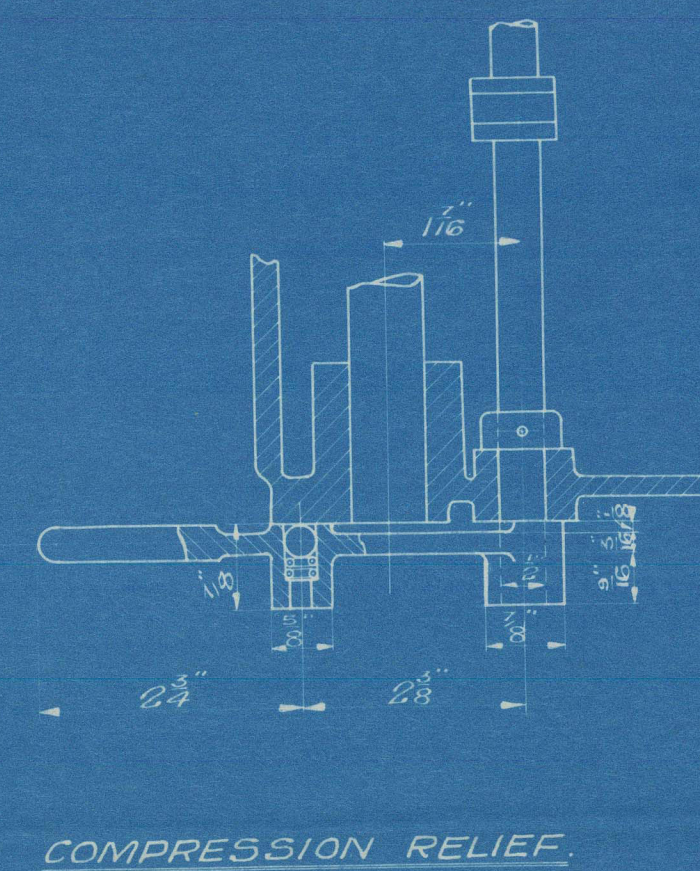
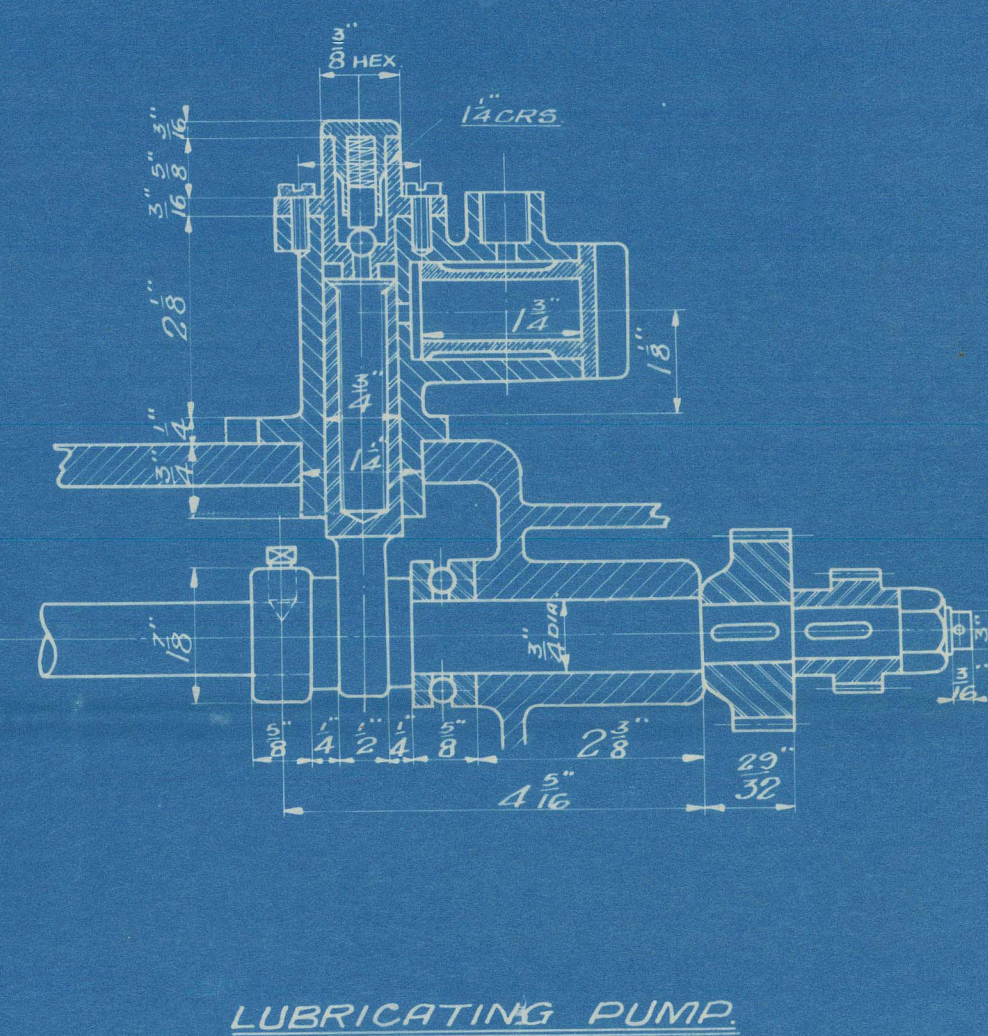
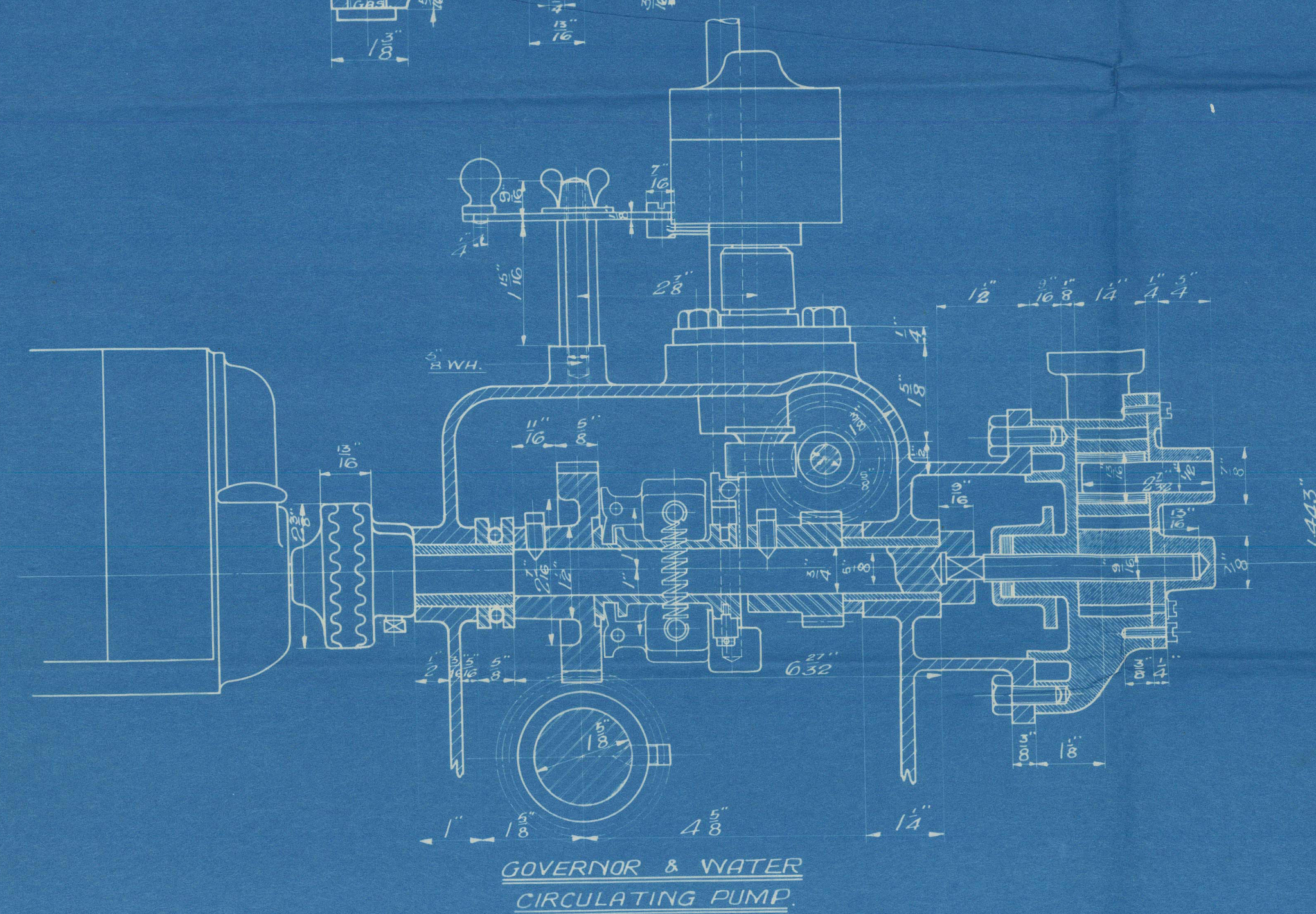
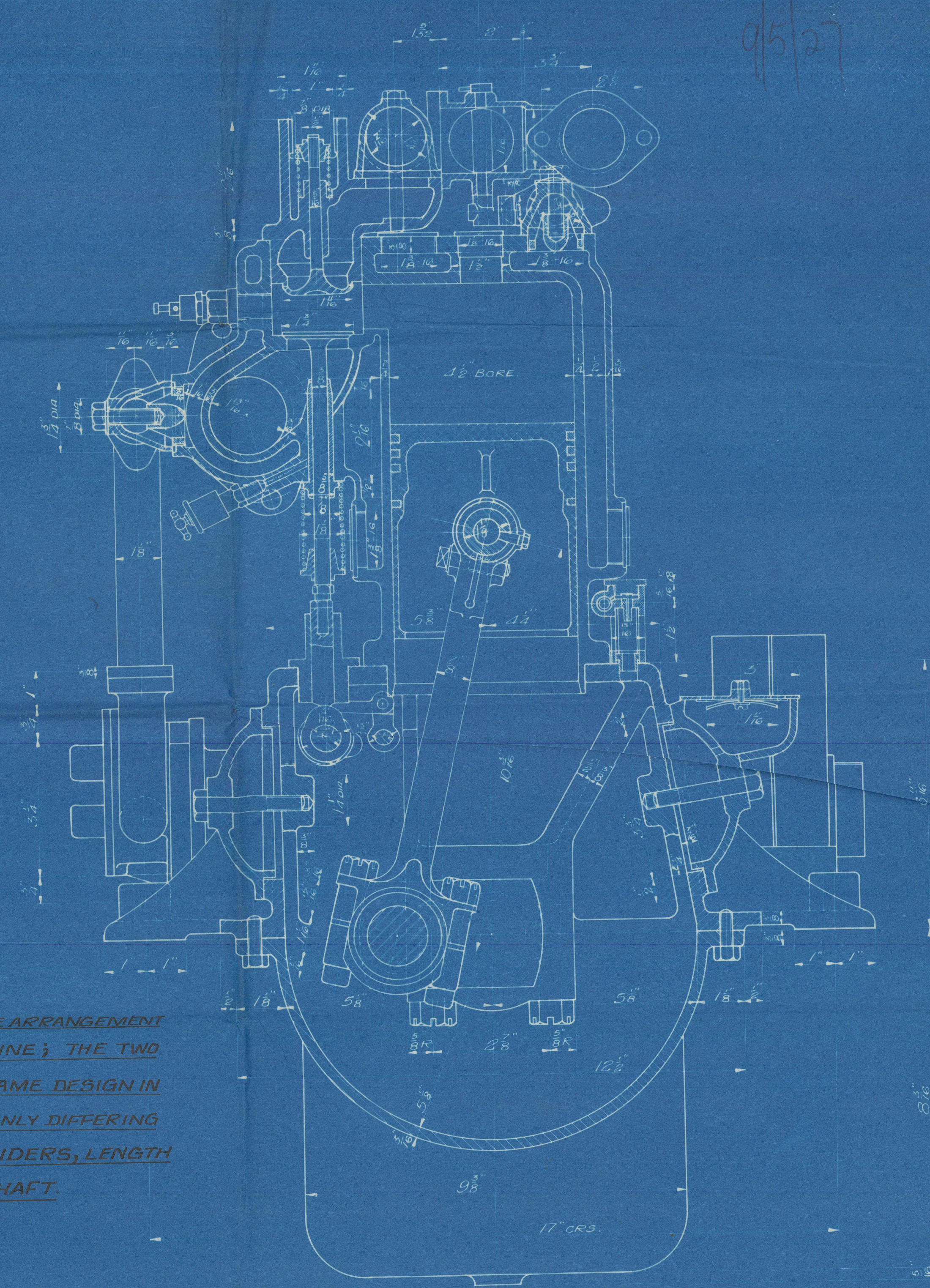


THIS DRAWING SHOWS THE ARRANGEMENT OF THE FOUR CYLINDER ENGINE; THE TWO CYLINDER ENGINE IS THE SAME DESIGN IN IN RESPECT TO DETAILS, ONLY DIFFERING IN THE NUMBER OF CYLINDERS, LENGTH OF CRANKCASE & CRANKSHAFT.



DWG No  
6373

L. GARDNER & SONS, LTD.,  
PATRICROFT.

TYPE 4CCR OIL ENGINE.  
DESCRIPTION GENERAL ARRANGEMENT.  
SCALE 1/2 FULL SIZE.

MATERIAL	MACHINED	SUPERSEDES
	JIG Nos	SUPERSEDED BY
		DRAWN BY
		TRACED BY N.G.
		CHECKED BY
DATE 10-9-1926		

L. GARDNER & SONS LTD.  
DRAWING  
29 APR 1927  
OFFICE  
PATRICROFT.

DWG No  
6373



L. Gardner & Sons

2CCR Engine  
for

W. J. Yarwood & Son  
for

Anglo-American

Vilbo's barge  
"CASTLEGATE"

LIV RPT NO 93191

General  
Charge

010734-010743-0056



© 2021

Lloyd's Register  
Foundation