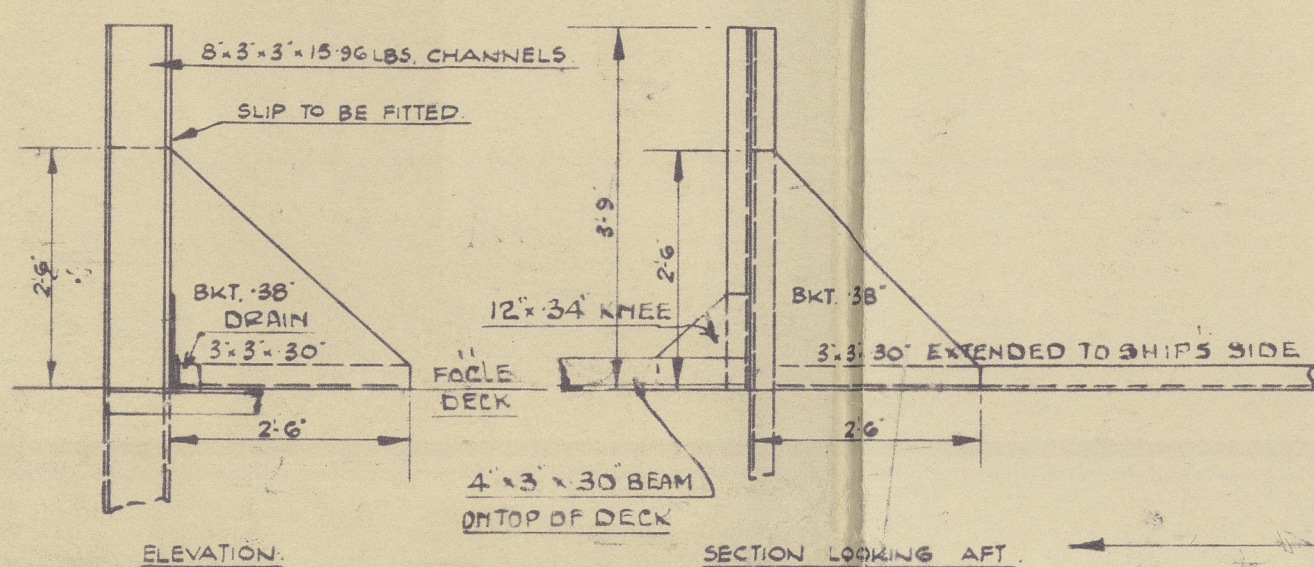
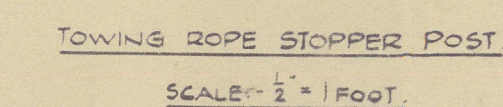
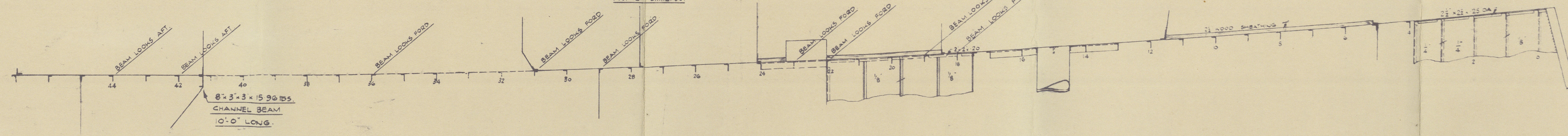
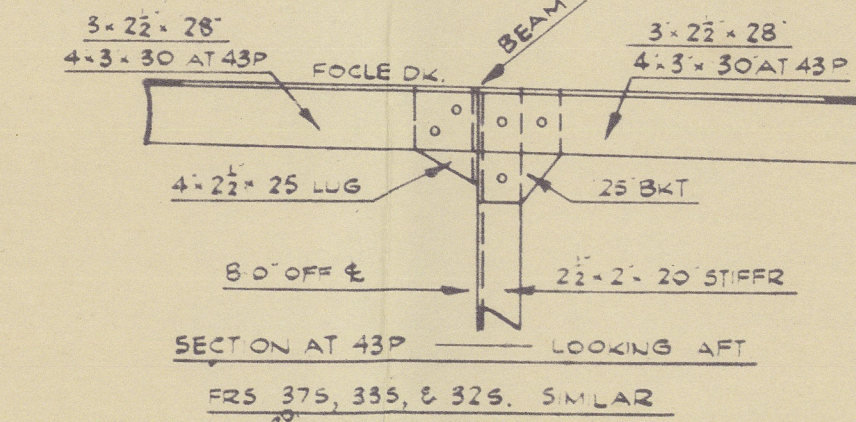
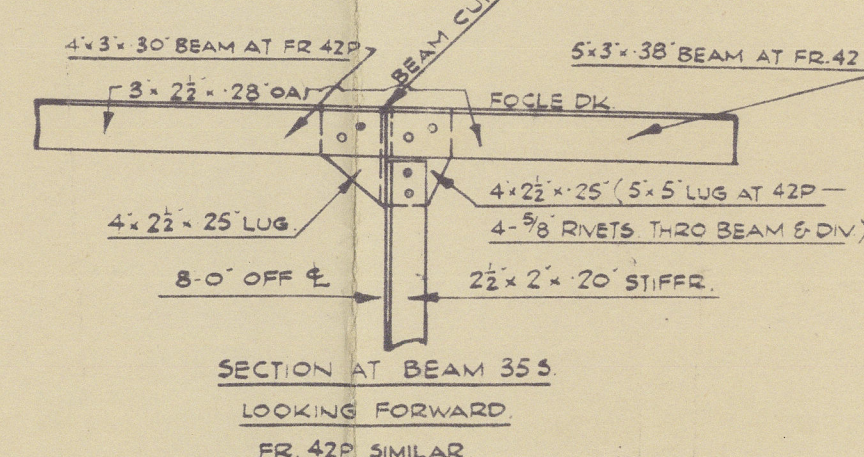
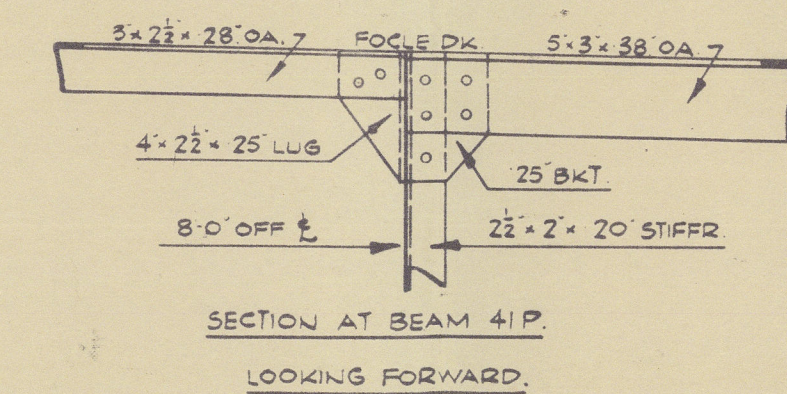
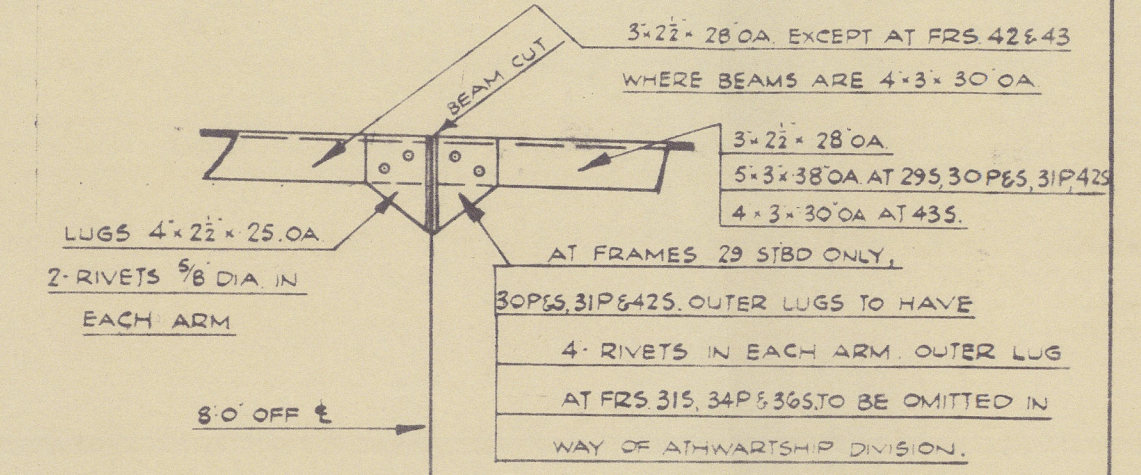
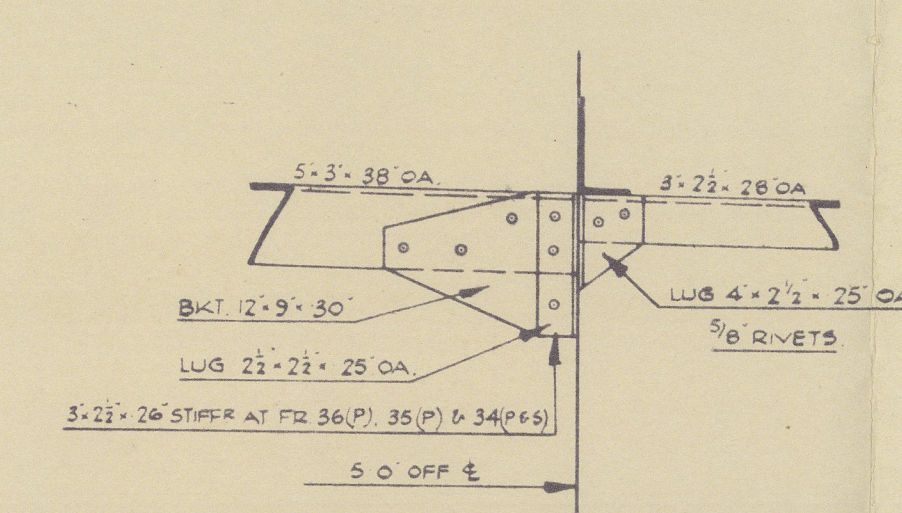
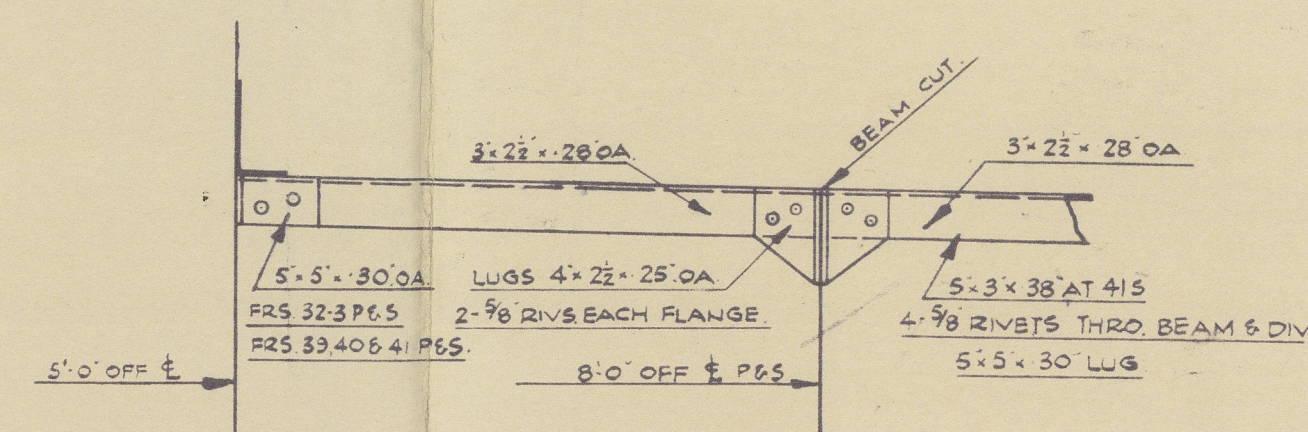


## FORECASTLE DECK.

SCALE :-  $\frac{1}{4}" = 1 \text{ FOOT}$  - DETAILS :-  $1" = 1 \text{ FOOT}$ .

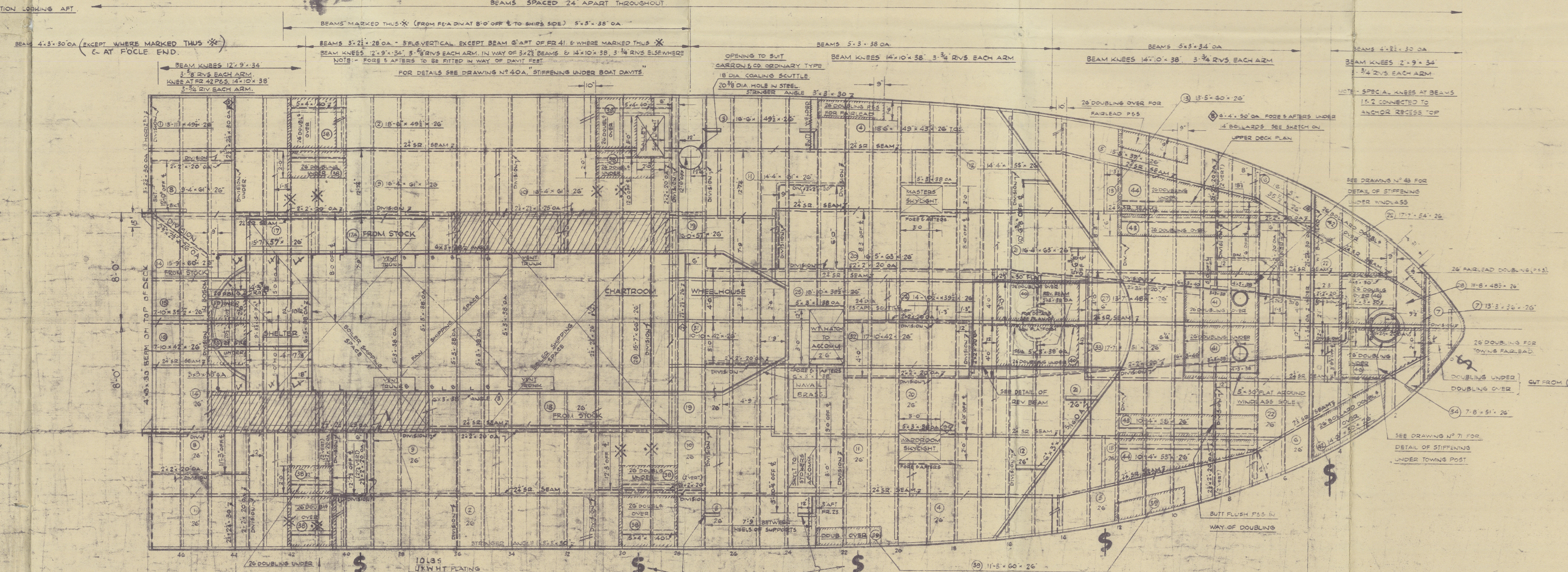
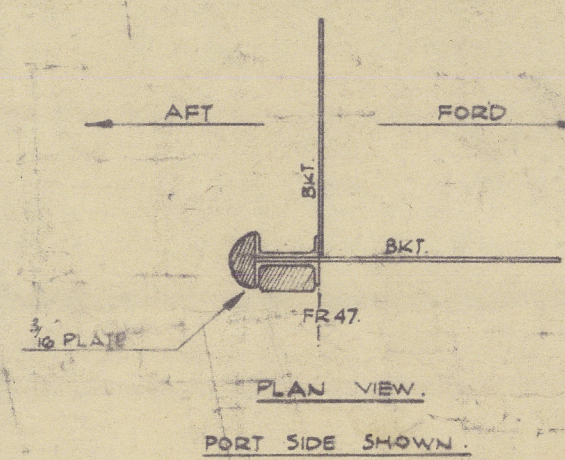
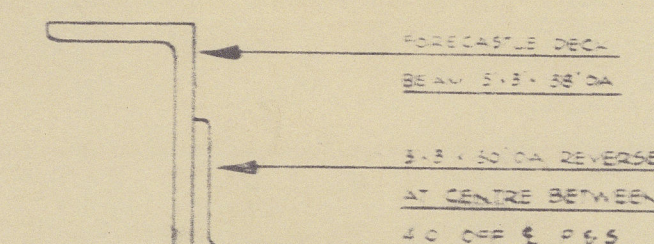
AS FITTED

<u>RIVETING</u>		
BEAMS 2 1/2" SR	5/8"	DIA. RIVS. 2 1/4" CENTRES
END LAPS 2 1/2" SR	5/8"	" 2 1/4" "
END LAPS OF STRINGER PLATES 4 1/2" DR.	5/8"	" 2 1/4" "
DECKHOUSE ANGLE DECK	5/8"	" 3 1/2" "
STRINGER ANGLE TO DECK	5/8"	" 2 1/4" "
<hr/>		
BEAMS TO DECK	5/8"	DIA. RIVS. 4 1/2" CENTRES
HOUSE DIV. ANGLES TO UNDERSIDE OF DECK	1 1/2"	" 2 3/4" "
BOILER CASING ANGLE TO UNDERSIDE OF DECK	5/8"	" 3 1/2" "
DOUBLING SIGHT EDGES	5/8"	" 2 1/4" "
SHUTTER, DECK ANGLE	5/8"	" 3 1/4" "
HOUSE DIV. ANGLES IN WAY OF DOUBLINGS	5/8"	" 3 1/2" "



NOTE:- MATERIAL ORDERED. MARK. FD.

NOTE - FOR DETAILS OF GUN PLATFORM & BREAKWATER  
SEE DRAWING N° 31.



NOTE: SKTS. TO BE FITTED ON INBOARD SIDE OF FFA DIVISION  
WHERE MARKED THUS . SEE CASING PLAN  
FOR DETAIL.

FOOT STRIPS FITTED ON DECK AS REQUIRED

DECK SHEATHED WITH 5x2½" WHITE SERAYAH EXCEPT IN WAY OF :

6"x3"x30" ANGLES WELDED AT CORNER  
TO TAKE COMPASS PLATFORM  
SUPPORTS SEE DRAWING NO 49

WHEELHOUSE, CHART ROOM, SHELTER ETC. (SEE PLAN OF WOOD DECK)

SEE DRAWING Nº 7  
DETAIL OF STIFFENING  
UNDER TOWING POST

P. 5

A

14151  
20001





H.M.T.S. Tug "SAMSON"

Messrs A. Hall and Co.

Yard No. 741 Eng. No 453/4

ABERDEEN Report No. 23645

March 1954

*Freecastle Deck.  
(as fitted)*

RECORDS DEPT.,  
LONDON.

10



© 2021

Lloyd's Register  
Foundation

010697-010704-0091