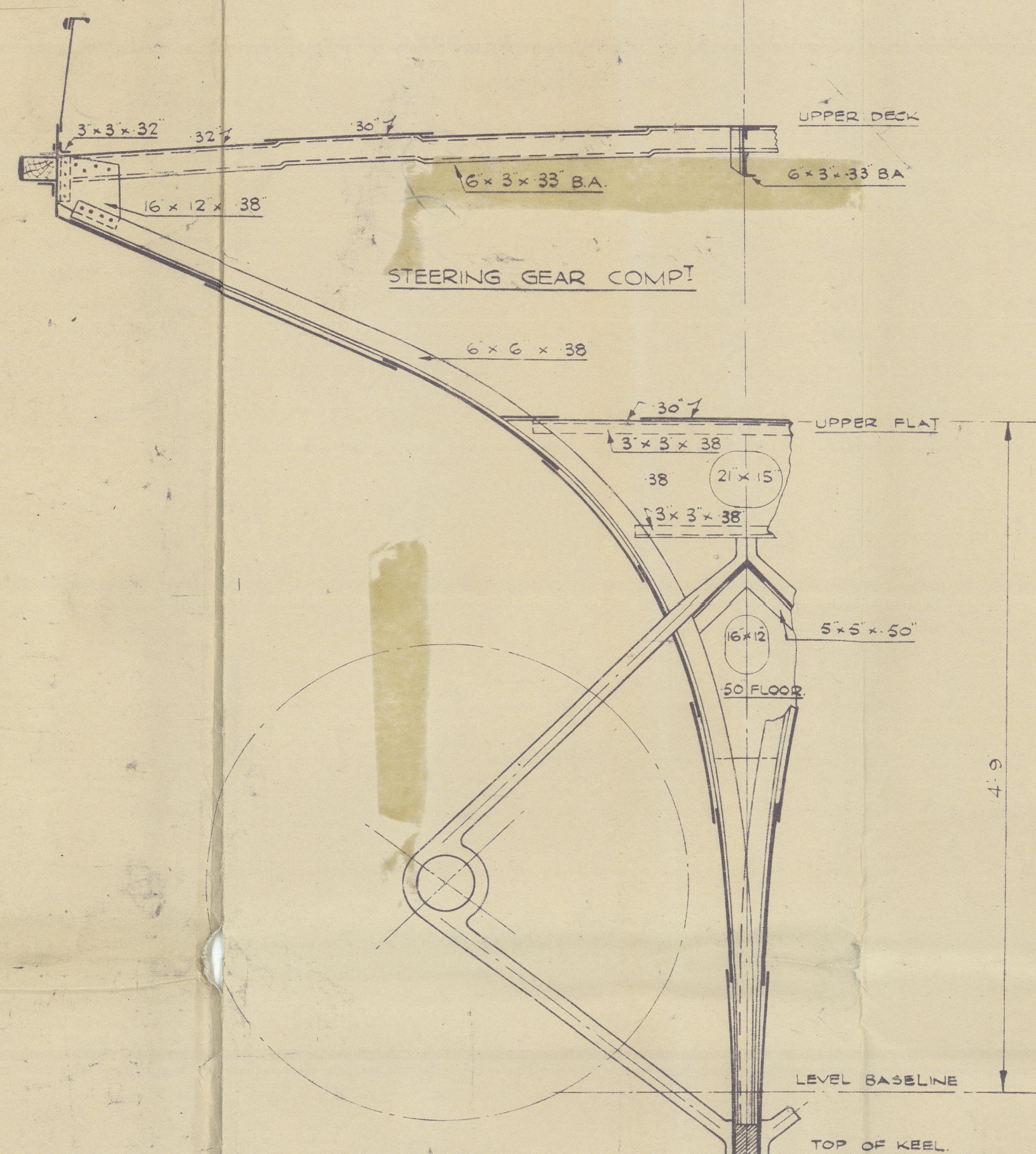


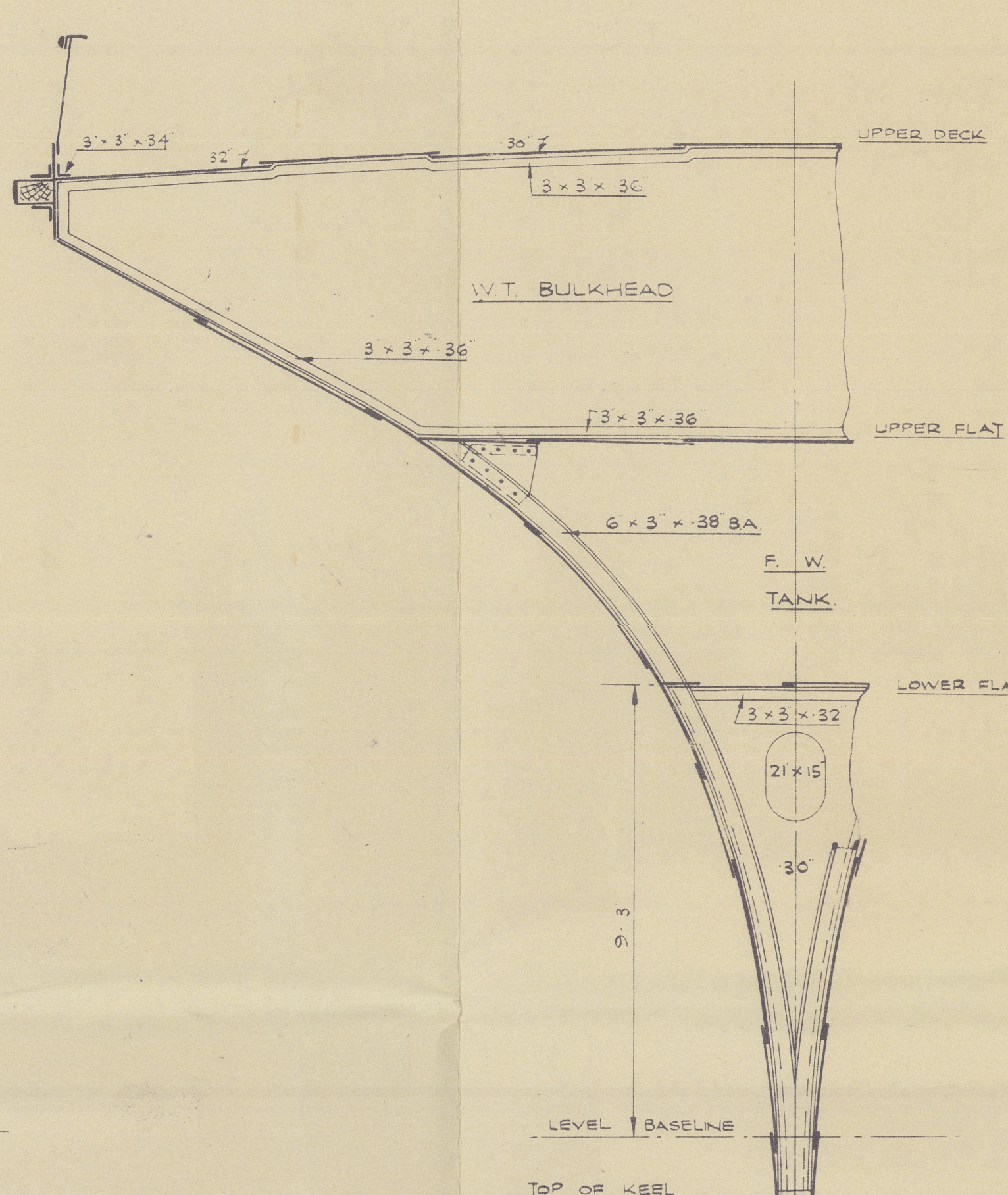
SHIP Nº 741-2-3.
DRAWING Nº 26.
STRUCTURAL SECTIONS.

SCALE:- $\frac{3}{8}$ " = 1 FOOT.

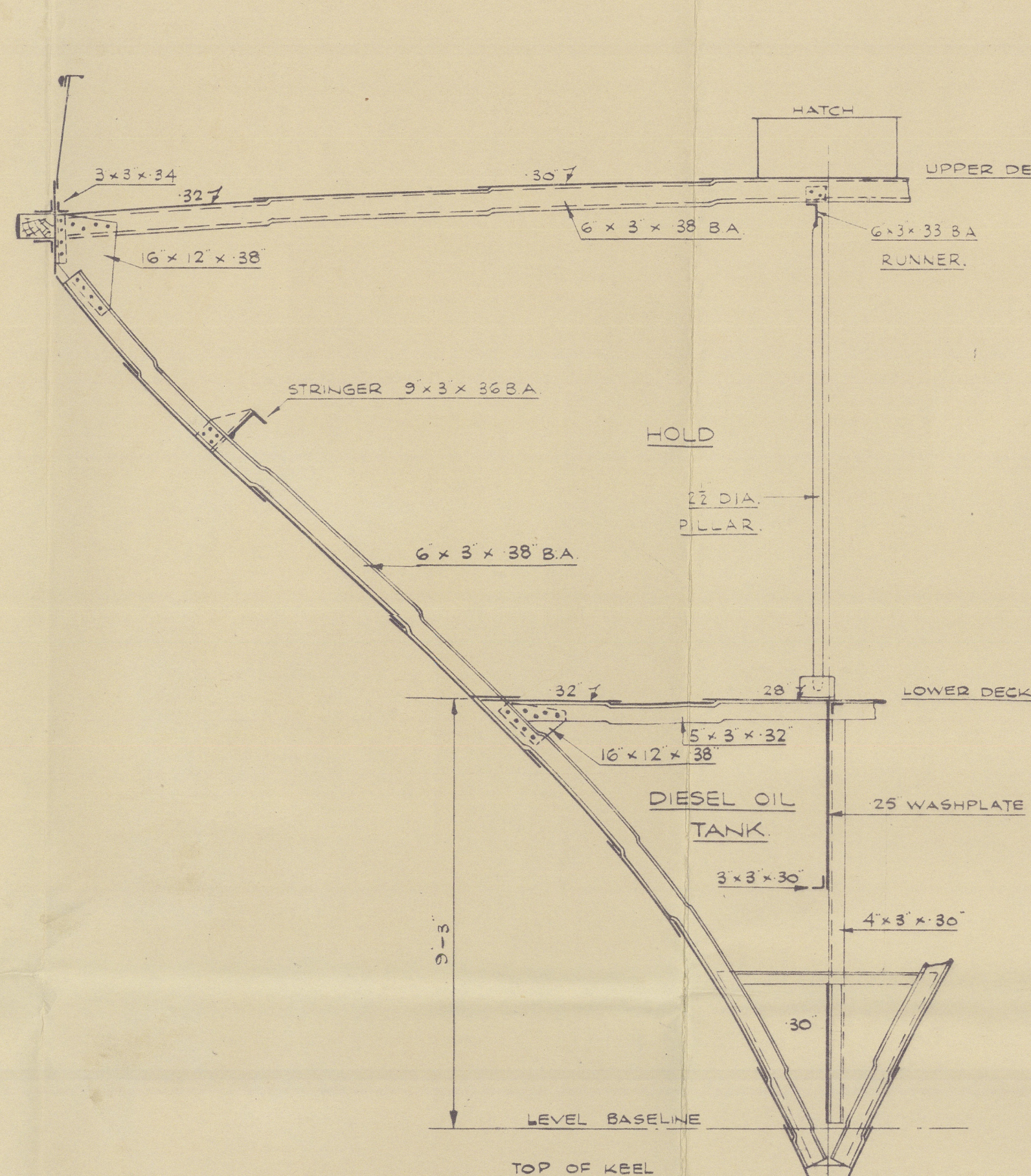
APPROVED BY ADMIRALTY 25-9-51.



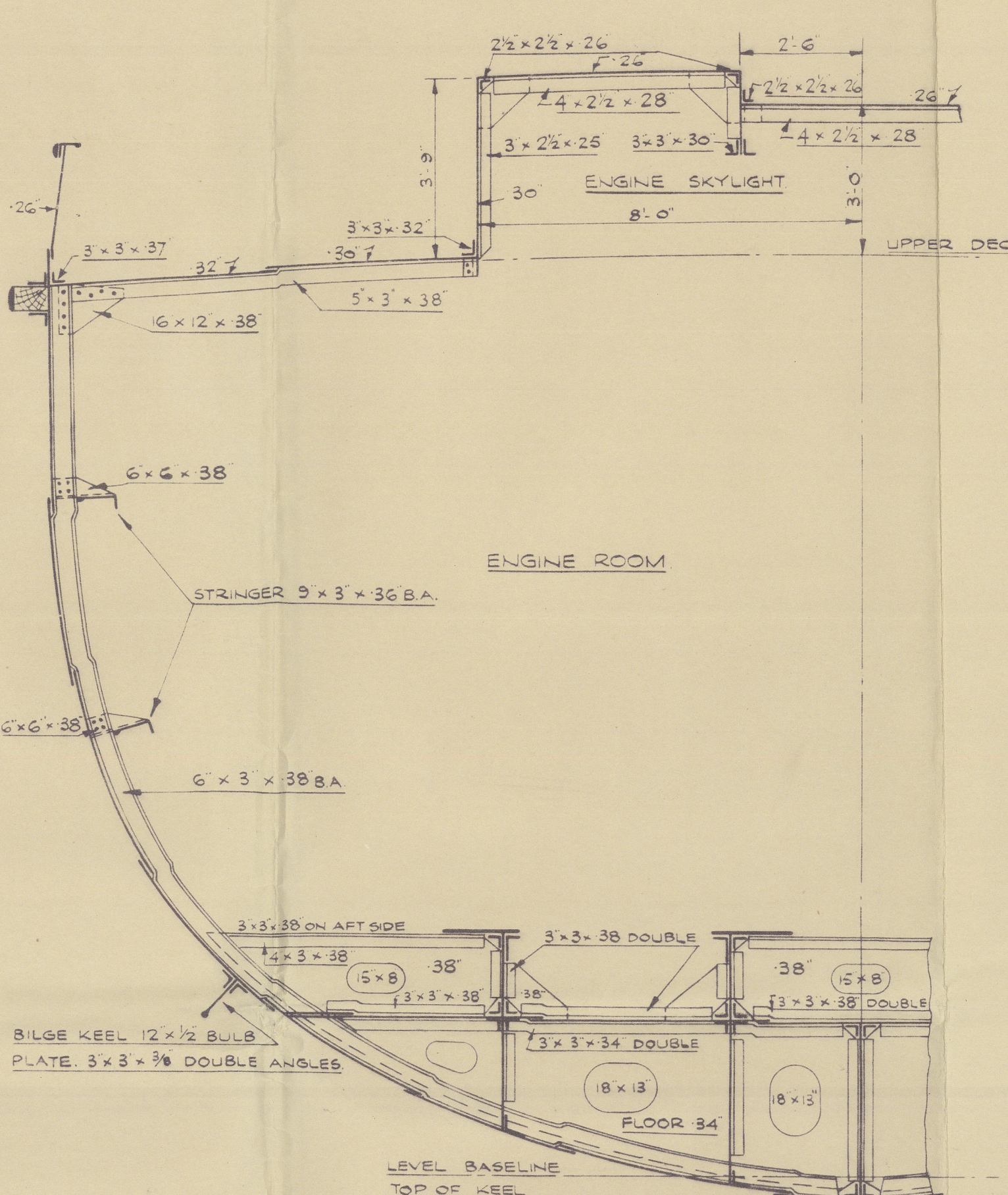
FRAME 79.
LOOKING AFT



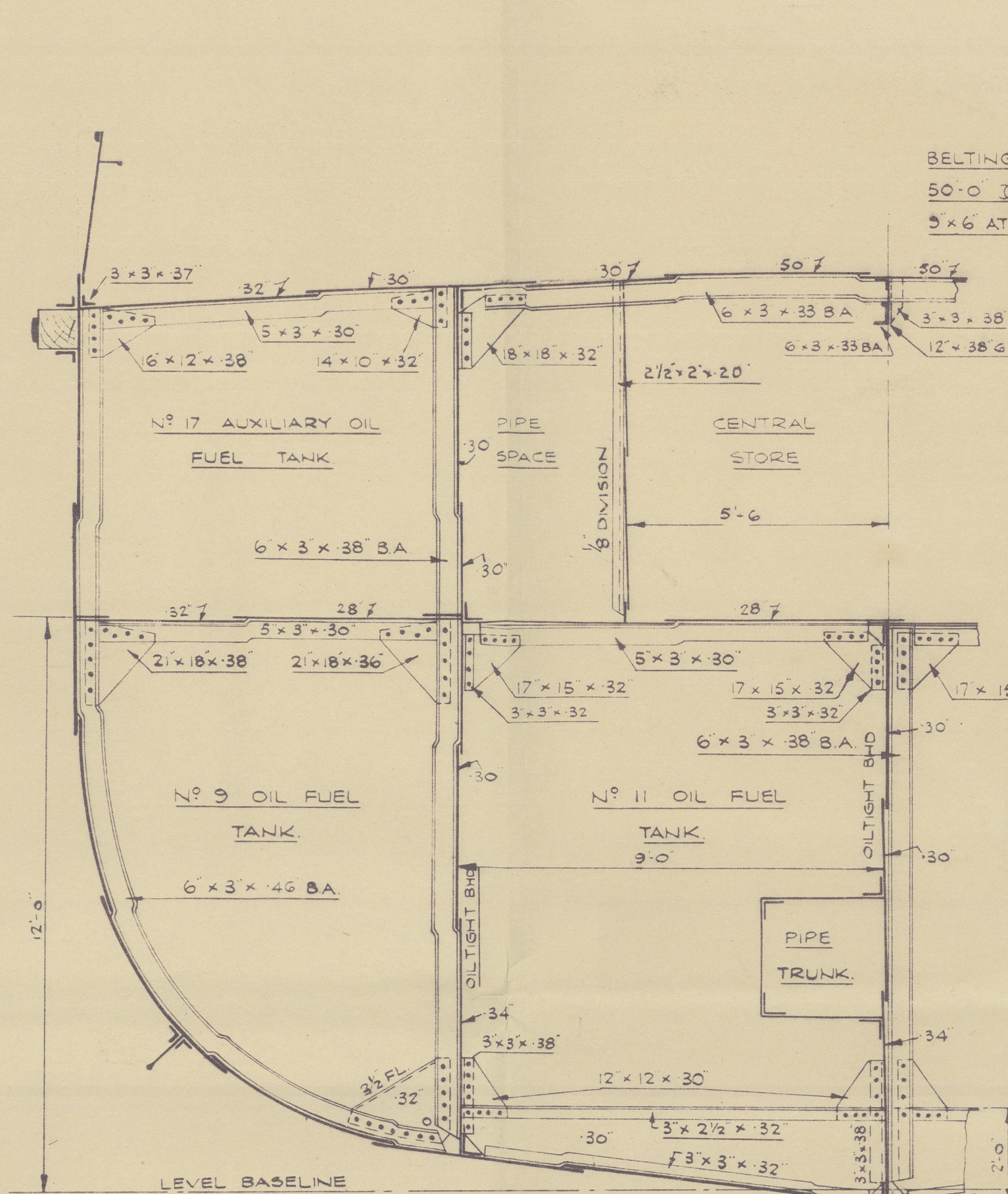
FRAME 77.
LOOKING AFT



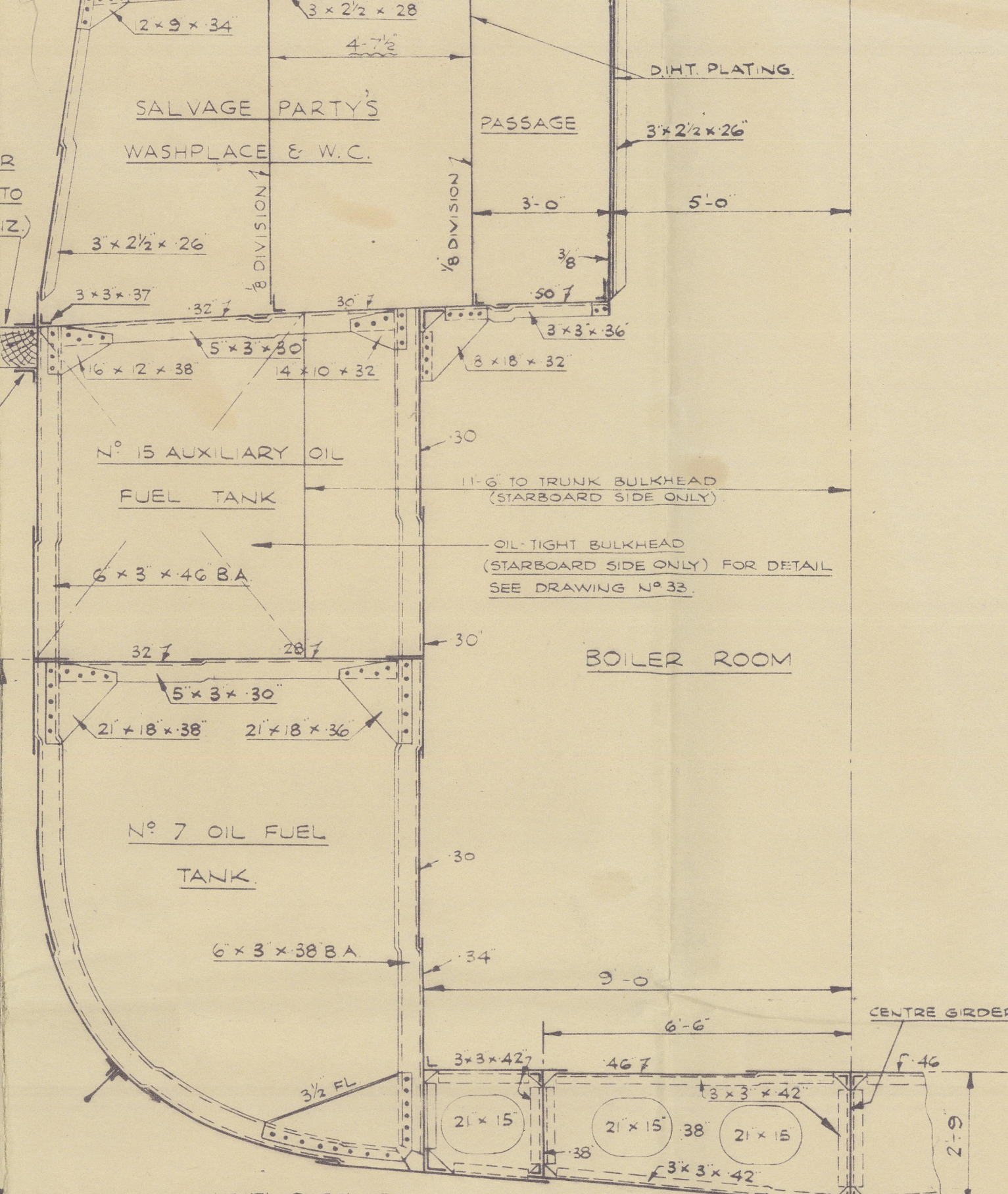
FRAME 71.
LOOKING AFT



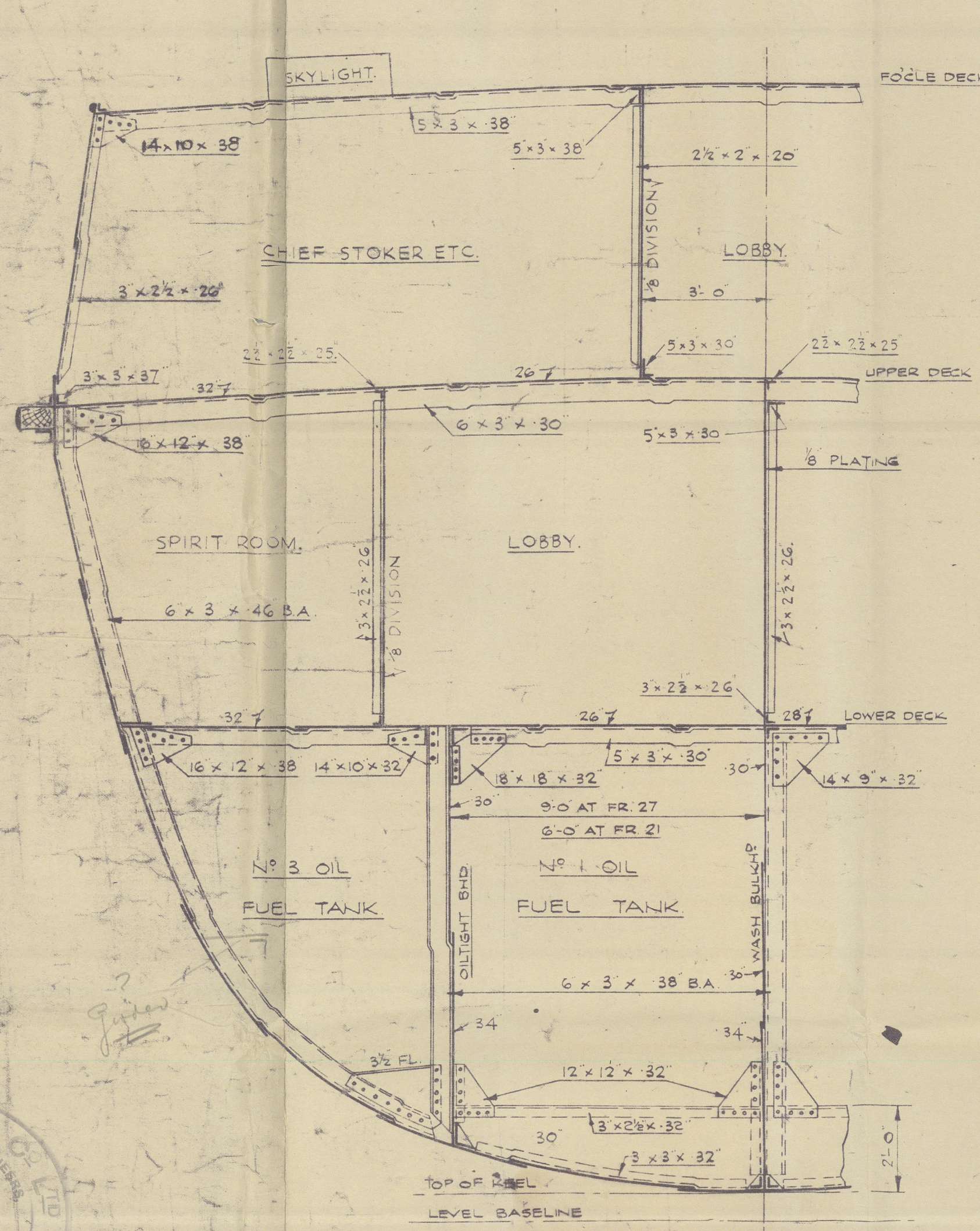
FRAME 55.
LOOKING AFT



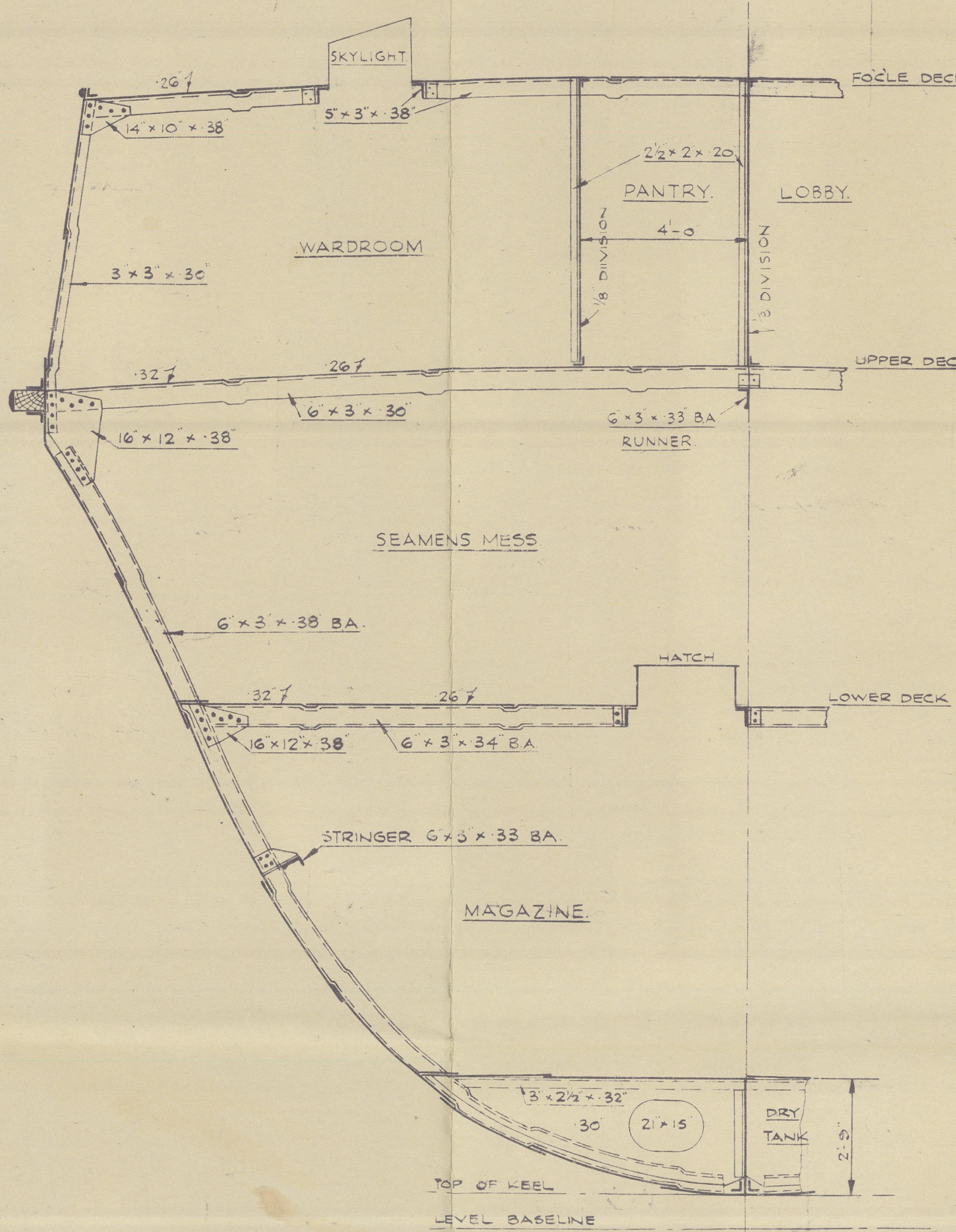
FRAME 48.
LOOKING AFT



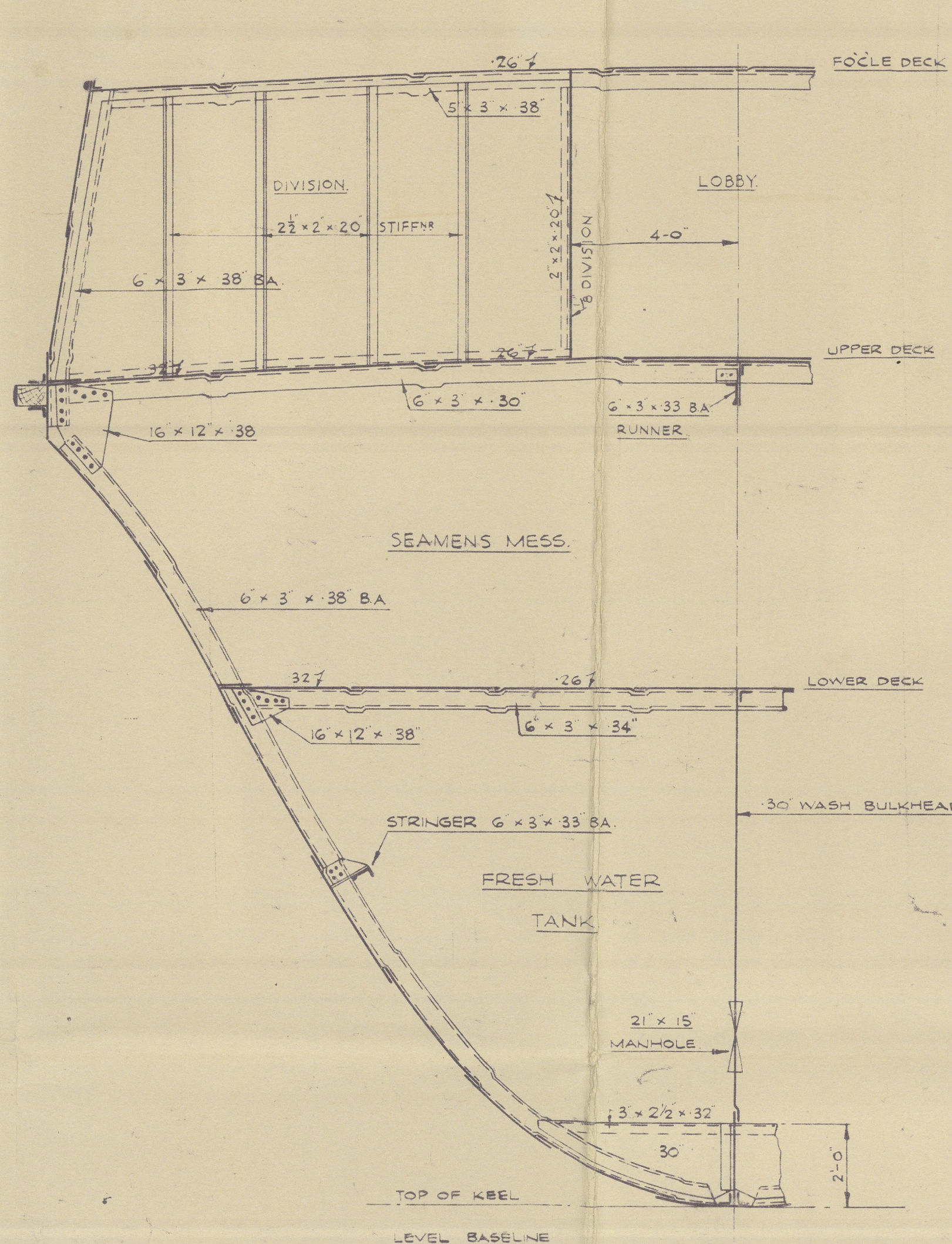
FRAME 40.
LOOKING AFT



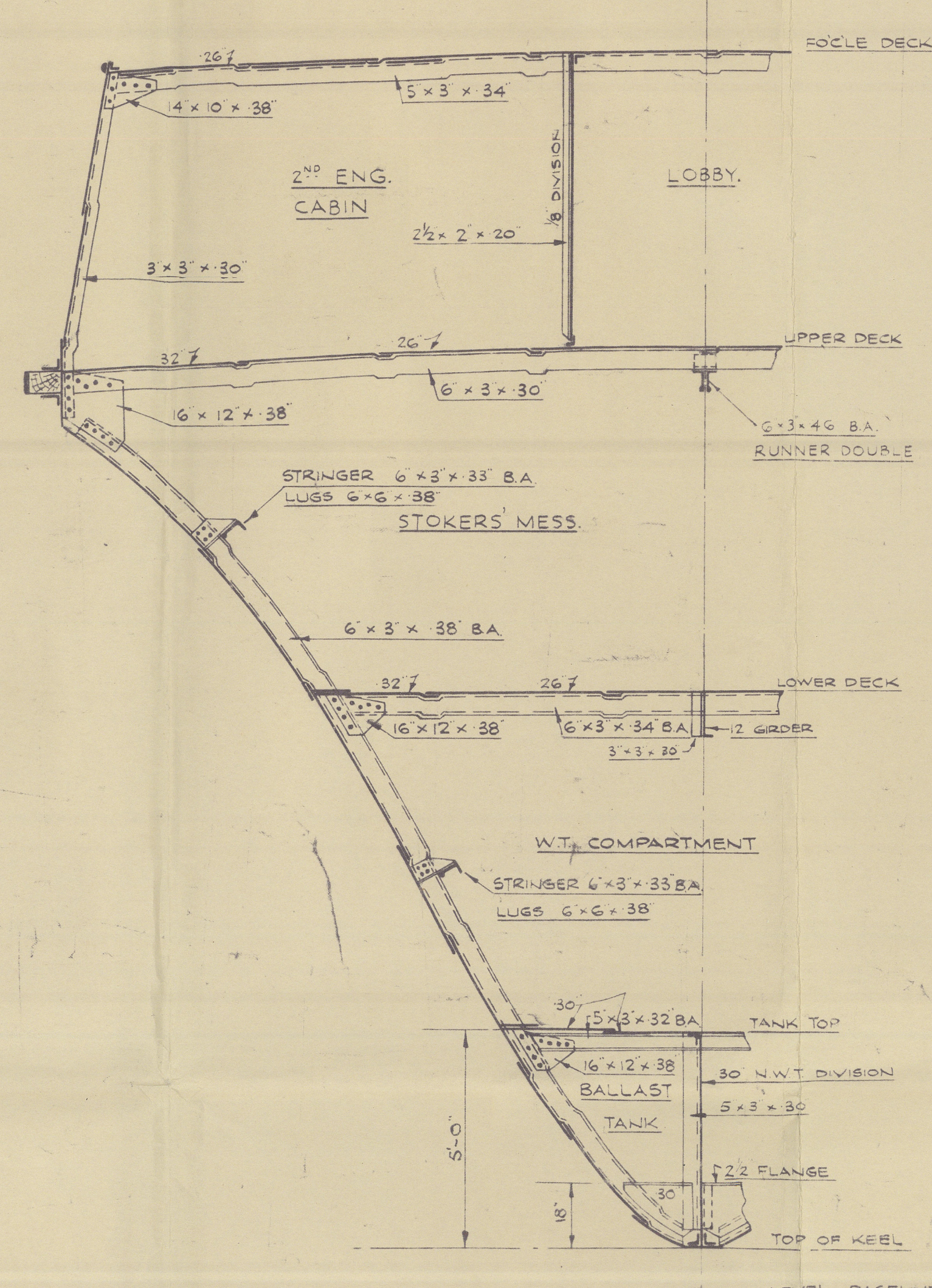
FRAME 24.
LOOKING AFT



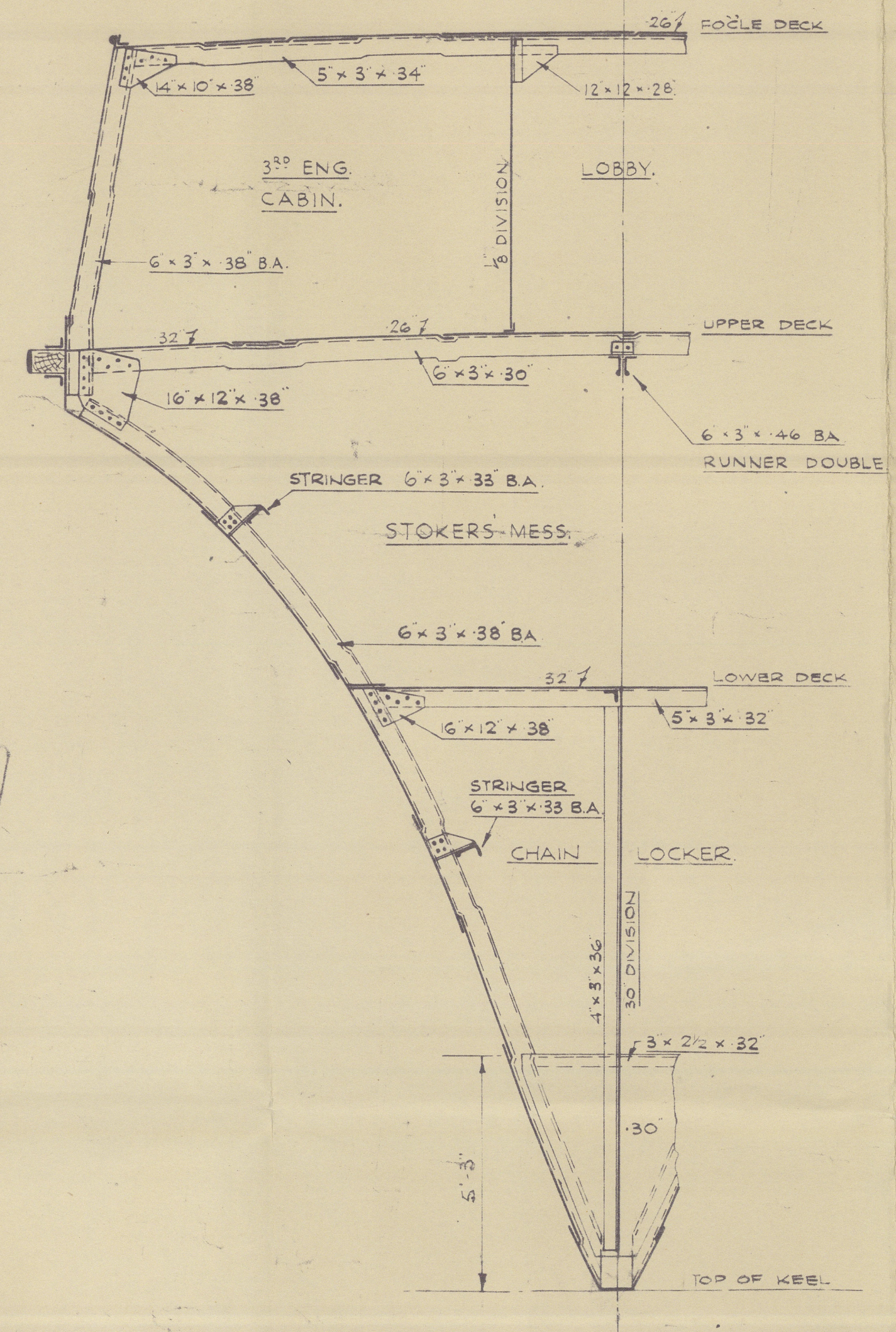
FRAME 19.
LOOKING AFT



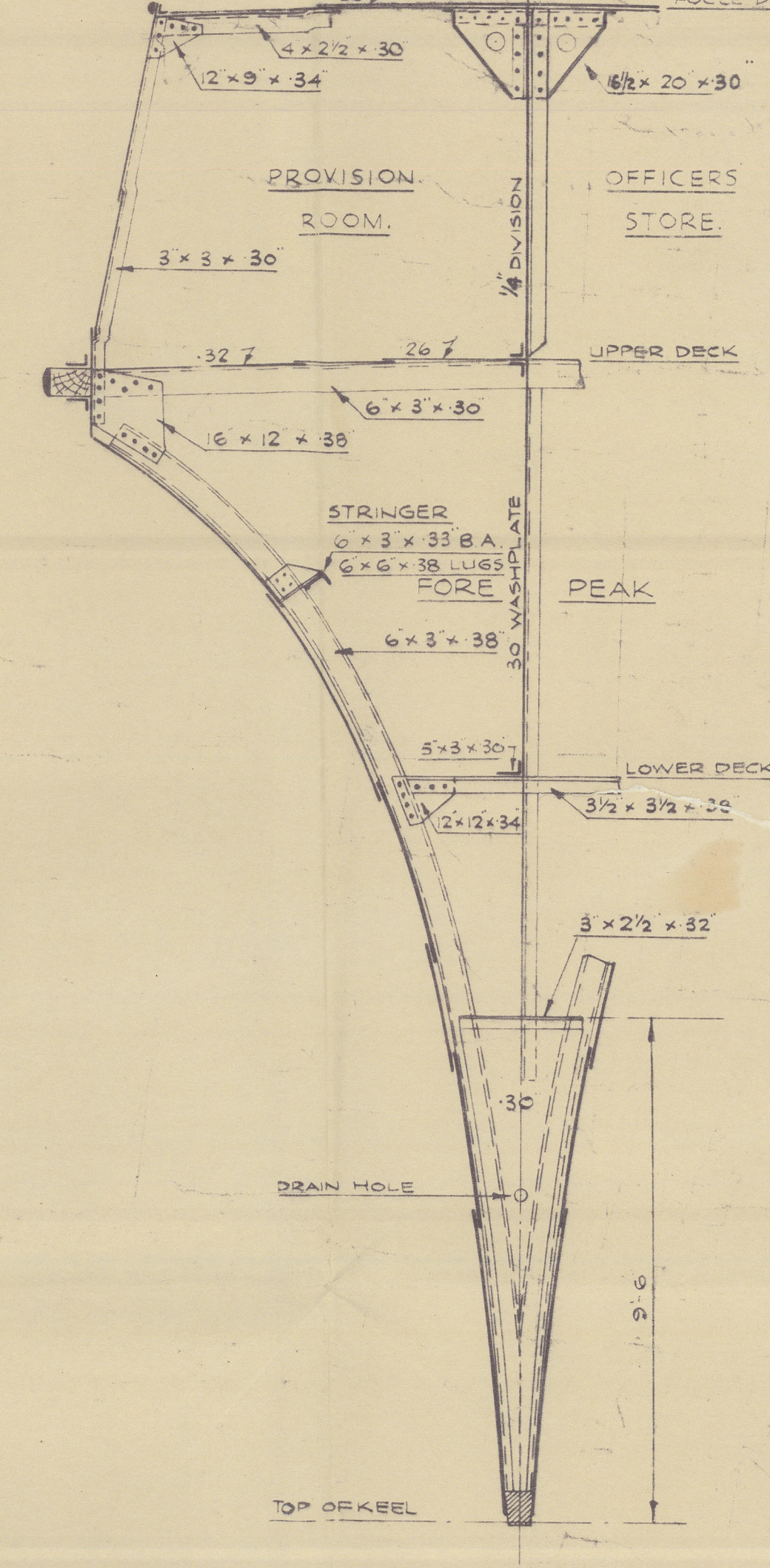
FRAME 16.
LOOKING AFT



FRAME 11.
LOOKING AFT



FRAME 7.
LOOKING AFT



FRAME 3.
LOOKING AFT

D/S 626.



H.M.T.S. Tug "SAMSON"

Messrs A.Hall and Co.

Yard No. 741 Eng. No 453/4

ABERDEEN Report No. 23645

March 1954

*Structural Sections
(as fitted)*

RECORDS DEPT.
LONDON.



© 2021

Lloyd's Register
Foundation

010697-010704-0087