

S.S. N^o 90

MIDSHIP SECTION

SCALE 1" = 1 FOOT.

PRINCIPAL DIMENSIONS

LENGTH B.P. 121'-0"

DEPTH MOULDED 10'-6"

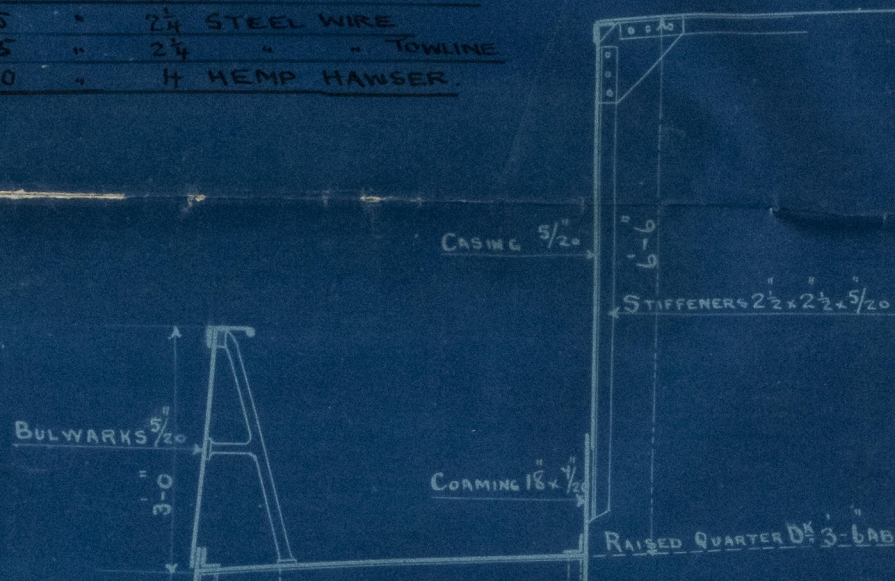
EQUIPMENT

2 BOWER ANCHORS 6 1/4 CWTs EACH STOCKLESS.
1 STREAM ANCHOR 1 1/2 " EX STOCK
165 FATHOMS 16 " STUD CHAIN CABLE.
45 " 2 " STEEL WIRE.
45 " 2 " " TOWLINE.
90 " 2 " " HAWSER.

2 BOWER ANCHORS 7 1/4 CWTs EACH STOCKLESS
1 STREAM ANCHOR 1 1/2 " EX STOCK
1 KEDGE " 3/4 " "
165 FATHOMS 16 " STUD CHAIN CABLE.
45 " 2 1/4 " STEEL WIRE
75 " 2 1/4 " " TOWLINE
90 " 4 " HEMP HAWSER.

HALF BREADTH 11'-0"
WHOLE DEPTH 10'-9 5/8"
HALF GIRTH 19'-8 1/2"
1ST N^o 41-833
2ND N^o 5019-96
375-24
EQUIPMENT N^o 5395-20
L¹ = 5-45 L² = 10-45

5310-00
402-00
5420-85 EQUIPMENT N^o
WHEEL HOUSE 5/20



RIVETING

BUTTS OF KEEL PLATE OVERLAPPED & TREBLE RIVETED ALL FORWARD.
BUTTS OF DECK STRINGER, SHEERSTRAKE & REMAINDER OF SHELL
OVERLAPPED & TREBLE RIVETED FOR 1/2 L X. DOUBLE
RIVETED AT ENDS.
BUTTS OF BULWARKS OVERLAPPED & SINGLE RIVETED.
RIVETS OF IRON.

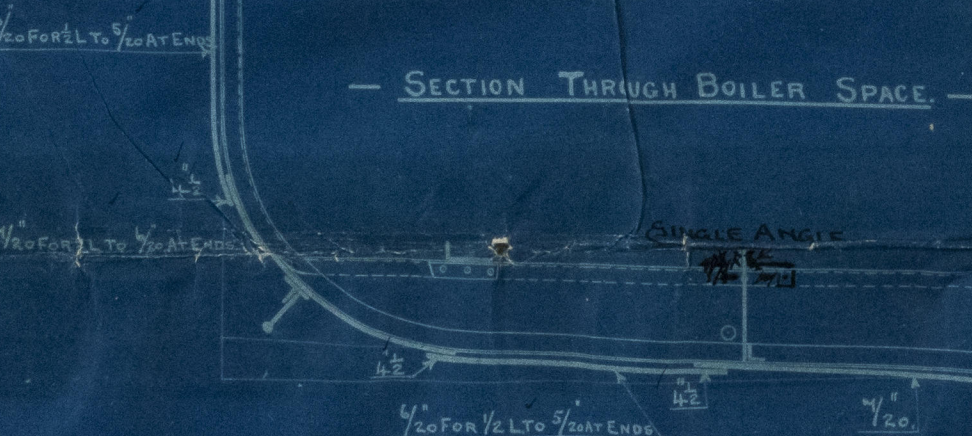
5/20 IN WAY OF R¹ Q¹ D¹
2 1/2
SHEERSTRAKE 3 1/2 x 1/20
FOR 1/2 L TO 5/20 AT ENDS.

SIDE STRINGER IN WAY OF R¹ Q¹ D¹
PLATE 12 x 1/20. SINGLE ANGLE
ON FACE 5 x 3 x 1/20.

1/20 FOR 1/2 L TO 5/20 AT ENDS
BRACKETS EVERY
3 SPACES.

BULB ANGLE
FRAMES FITTED
IN HOLD - 1946
& SIDE STRINGERS
REMOVED

SECTION THROUGH BOILER SPACE



BRIDGE & FORECASTLE
TIE PLATES 4 x 1/20
BRIDGE & FORECASTLE
STRINGERS 16 x 1/20
STRINGER ANGLE 3 x 3 x 1/20

SINGLE HATCH COVERS
10' BROAD x 2 1/2 THICK

WEB PLATES 1/20
5 x 5 PITCH PINE

HATCHWAY END BEAMS 3 x 3 x 1/20

BEAMS 4 x 2 1/2 x 1/20 ON EVERY FRAME

BEAM KNEES 12 x 1/20

BEAMS 4 x 2 1/2 x 1/20 ON EVERY FRAME

BEAM KNEES 12 x 1/20

BEAMS 4 x 2 1/2 x 1/20 ON EVERY FRAME

BEAM KNEES 12 x 1/20

BEAMS 4 x 2 1/2 x 1/20 ON EVERY FRAME

BEAM KNEES 12 x 1/20

BEAMS 4 x 2 1/2 x 1/20 ON EVERY FRAME

BEAM KNEES 12 x 1/20

BEAMS 4 x 2 1/2 x 1/20 ON EVERY FRAME

BEAM KNEES 12 x 1/20

BEAMS 4 x 2 1/2 x 1/20 ON EVERY FRAME

BEAM KNEES 12 x 1/20

BEAMS 4 x 2 1/2 x 1/20 ON EVERY FRAME

BEAM KNEES 12 x 1/20

BEAMS 4 x 2 1/2 x 1/20 ON EVERY FRAME

BEAM KNEES 12 x 1/20

BEAMS 4 x 2 1/2 x 1/20 ON EVERY FRAME

BEAM KNEES 12 x 1/20

BEAMS 4 x 2 1/2 x 1/20 ON EVERY FRAME

BEAM KNEES 12 x 1/20

BEAMS 4 x 2 1/2 x 1/20 ON EVERY FRAME

BRIDGE & FORECASTLE
TIE PLATES 4 x 1/20

BRIDGE & FORECASTLE
STRINGERS 16 x 1/20

BRIDGE & FORECASTLE
STRINGER ANGLE 3 x 3 x 1/20

BRIDGE & FORECASTLE
TIE PLATES 4 x 1/20

BRIDGE & FORECASTLE
STRINGERS 16 x 1/20

BRIDGE & FORECASTLE
STRINGER ANGLE 3 x 3 x 1/20

BRIDGE & FORECASTLE
TIE PLATES 4 x 1/20

BRIDGE & FORECASTLE
STRINGERS 16 x 1/20

BRIDGE & FORECASTLE
STRINGER ANGLE 3 x 3 x 1/20

BRIDGE & FORECASTLE
TIE PLATES 4 x 1/20

BRIDGE & FORECASTLE
STRINGERS 16 x 1/20

BRIDGE & FORECASTLE
STRINGER ANGLE 3 x 3 x 1/20

BRIDGE & FORECASTLE
TIE PLATES 4 x 1/20

BRIDGE & FORECASTLE
STRINGERS 16 x 1/20

BRIDGE & FORECASTLE
STRINGER ANGLE 3 x 3 x 1/20

BRIDGE & FORECASTLE
TIE PLATES 4 x 1/20

BRIDGE & FORECASTLE
STRINGERS 16 x 1/20

BRIDGE & FORECASTLE
STRINGER ANGLE 3 x 3 x 1/20

BRIDGE & FORECASTLE
TIE PLATES 4 x 1/20

BRIDGE & FORECASTLE
STRINGERS 16 x 1/20

BRIDGE & FORECASTLE
STRINGER ANGLE 3 x 3 x 1/20

BRIDGE & FORECASTLE
TIE PLATES 4 x 1/20

BRIDGE & FORECASTLE
STRINGERS 16 x 1/20

BRIDGE & FORECASTLE
STRINGER ANGLE 3 x 3 x 1/20

BRIDGE & FORECASTLE
TIE PLATES 4 x 1/20

BRIDGE & FORECASTLE
STRINGERS 16 x 1/20

BRIDGE & FORECASTLE
STRINGER ANGLE 3 x 3 x 1/20

BRIDGE & FORECASTLE
TIE PLATES 4 x 1/20

BRIDGE & FORECASTLE
STRINGERS 16 x 1/20

BRIDGE & FORECASTLE
STRINGER ANGLE 3 x 3 x 1/20

BRIDGE & FORECASTLE
TIE PLATES 4 x 1/20

BRIDGE & FORECASTLE
STRINGERS 16 x 1/20

SECTION THROUGH HOLD

CENTRE KEELSON DOUBLE
ANGLES 4 1/2 x 3 x 1/20 CONTINUOUS
AND INTERCOSTAL PLATE 1/20
2 1/2 x 2 1/2 x 1/20
3 x 3 x 1/20
2 1/2 x 2 1/2 x 1/20
INTERCOSTAL 1/20
K L PLATE 30 x 1/20 FOR
1/2 L TO 5/20 AT ENDS.

5 x 8 1/20 SINGLE
ANGLE
SIDE KEELSON
3 x 3 x 1/20 DOUBLE
ANGLES
BILGE KEELSON
3 x 3 x 1/20 SINGLE ANGLE
INTERCOSTAL 1/20

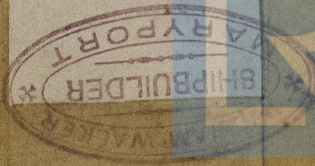
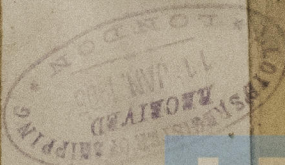


010687-010696-0311

FIRST
EX
Mr. Walker No 90

"ADMIRAL"
Midship Section

Bow Port No 1231



© 2021

Lloyd's Register
Foundation

010687-010696-0311