

DRAWING No 2.

MIDSHIP SECTION.

YARD Nos 755-6-7-8. & 761 *see endorsement 15.3.45*

DIMENSIONS 133'-0" BP x 25'-0" BMLD x 14'-0" DMLD

CLASS 100 A.I. STEAM TRAWLERS.

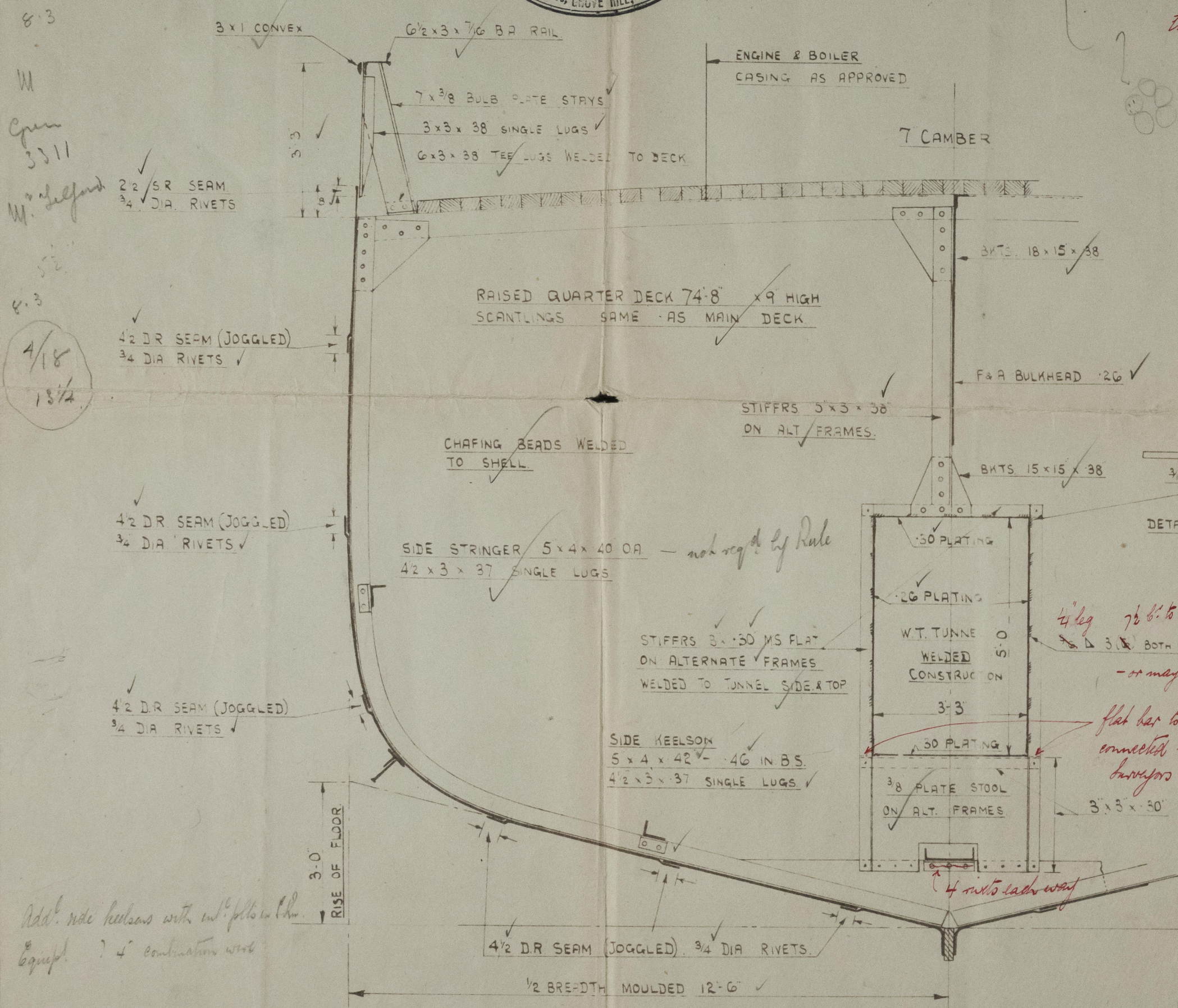
SCALE 1/2" = 1 FOOT.



| EQUIPMENT.         |                      |   |
|--------------------|----------------------|---|
| 1 STOCKLESS ANCHOR | 8 CWT.               | ✓ |
| 1 " "              | 7 1/4 "              | ✓ |
| 1 RODGERS          | 3/4 CWT Ex STOCK     | ✓ |
| 120 FMS OF         | 1/8" STUD LINK CABLE | ✓ |
| 60 " "             | 5 1/2" HAWSER } ⊗    | ✓ |
| 60 " "             | 5 WARP }             | ✓ |

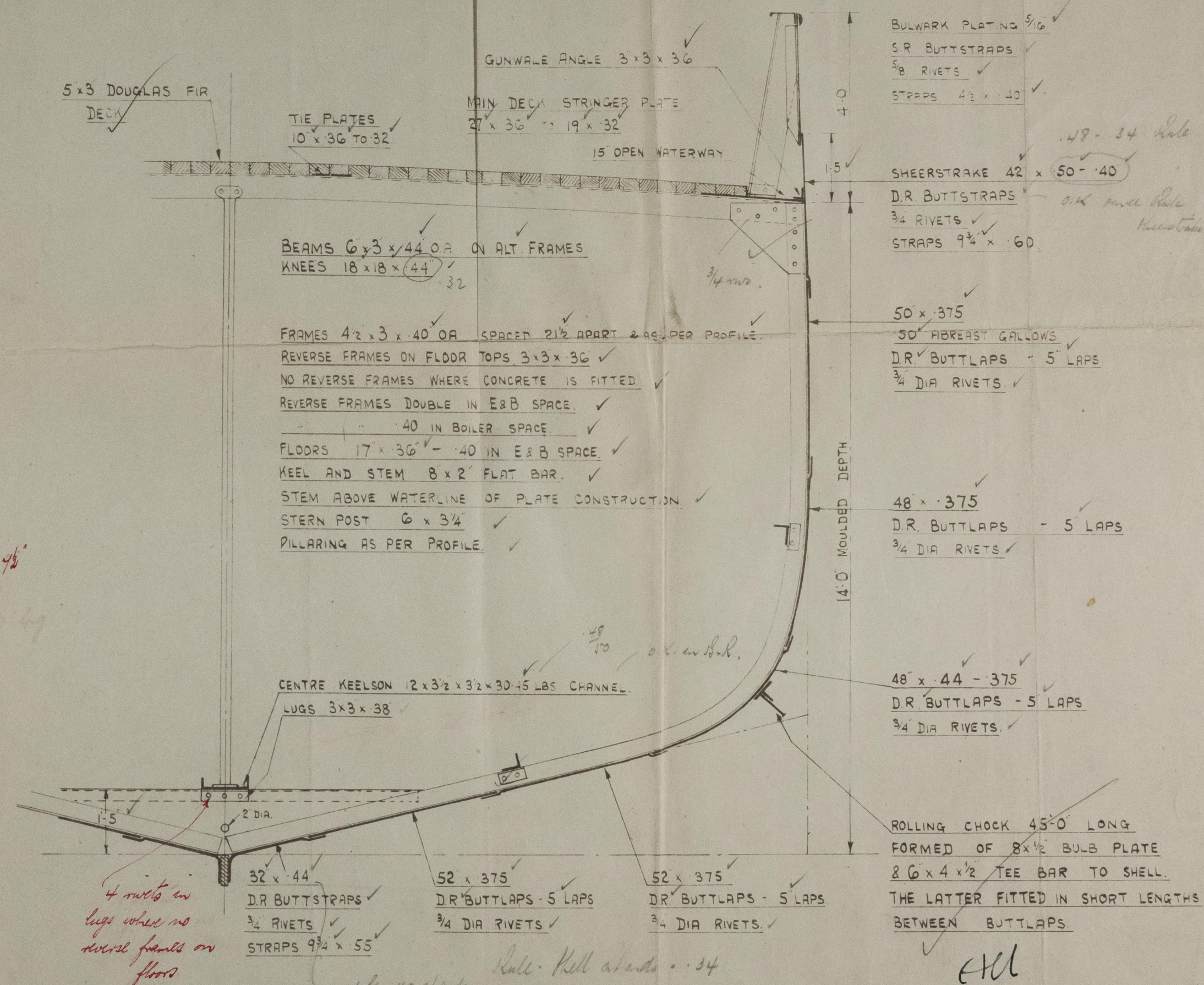
⊗ OR ALTERNATIVELY 2-60 FM LENGTHS OF 4" COMBINATION WIRE - *Breaking strengths not less than 8.3 tons*

| LLOYDS NUMERALS |       |
|-----------------|-------|
| LxD             | 162.0 |
| D               | 14    |
| Lx(B+D)         | 587.0 |
| B+D             | 31    |
| L/D             | 950   |
| 7/8             | 532   |
| d               | 1258  |



SECTION IN WAY OF RAISED QTR. DECK.  
THROUGH MAIN BUNKER

APPROVED BY LLOYDS :-



SECTION IN WAY OF MAIN DECK

COOK, WELTON & GEMMELL LTD.  
SHIPBUILDERS  
BEVERLEY

24.1.45



Boston Gannet

10

COOK, WELTON & GEMMELL LTD.  
YARD NOS. 755/6/7/8 & 761

MIDSHIP SECTION

*Chaffcombe*

EX

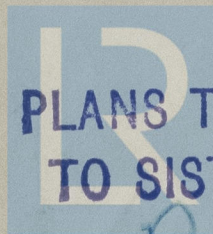
"ABY"



© 2021

PLANS TRANSFERRED  
TO SISTER VESSEL

010662-010674-0265



Lloyd's Register  
Foundation



HULL

Cook Welton & Gemmell Ltd.

Ed no 755. 6. 7. + 8.

Steam Haulers to Private etc

Midship Section

Office Copy



© 2021

Lloyd's Register  
Foundation