

SHIPS NOS. ~~365-372~~ 291-2-3-4.  
MIDSHIP SECTION.

SCALE:-  $\frac{3}{4}$ " = ONE FOOT. DRG. N<sup>o</sup>. 15.

DIMENSIONS:- 141'-0" B.P. x 27'-0" MLD. x 11'-0" MLD.

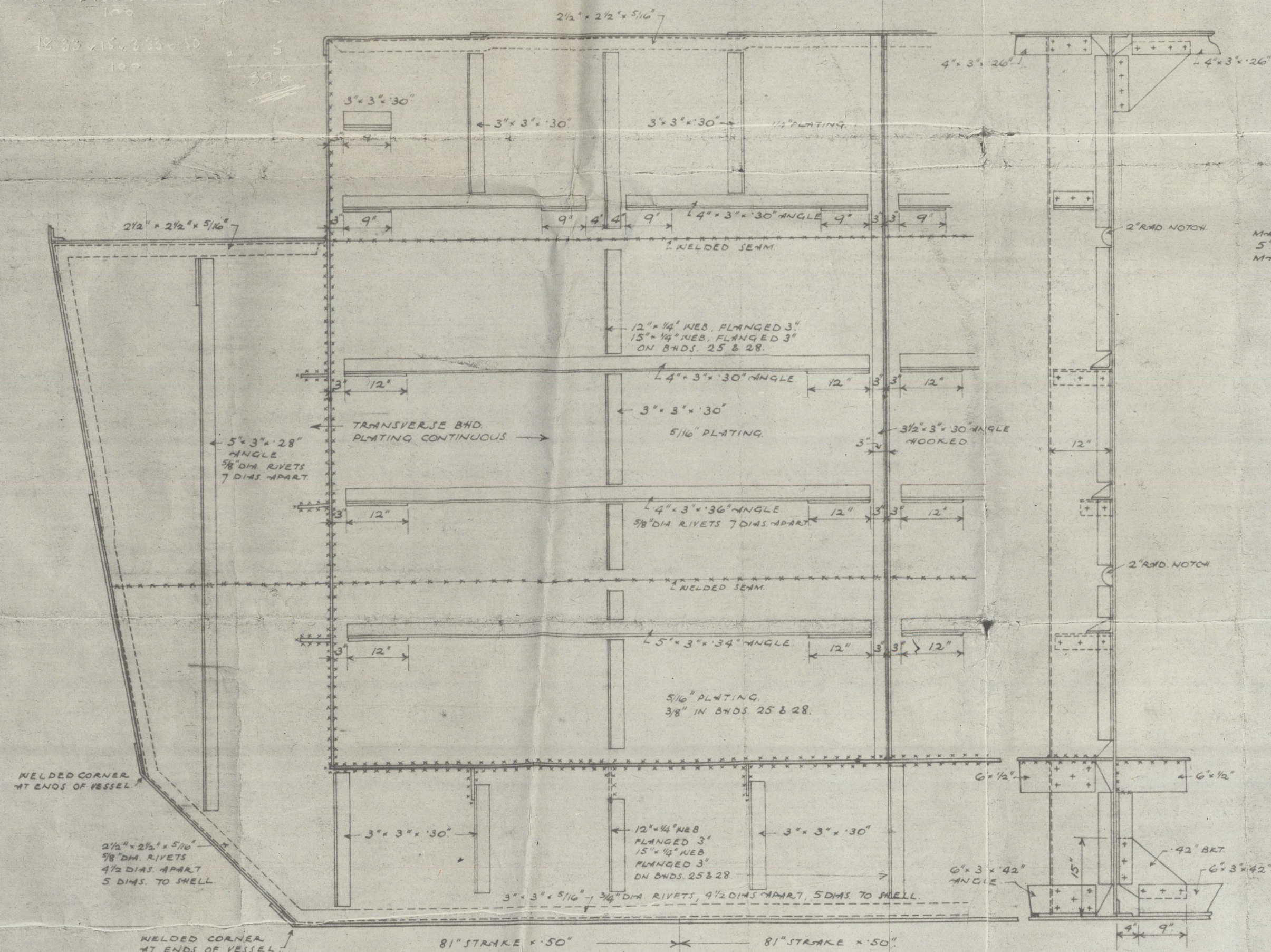
CLASS:- B.S.\* (BULK OIL CARRIER, SPECIAL SERVICE).

DRAUGHT 10'-0".

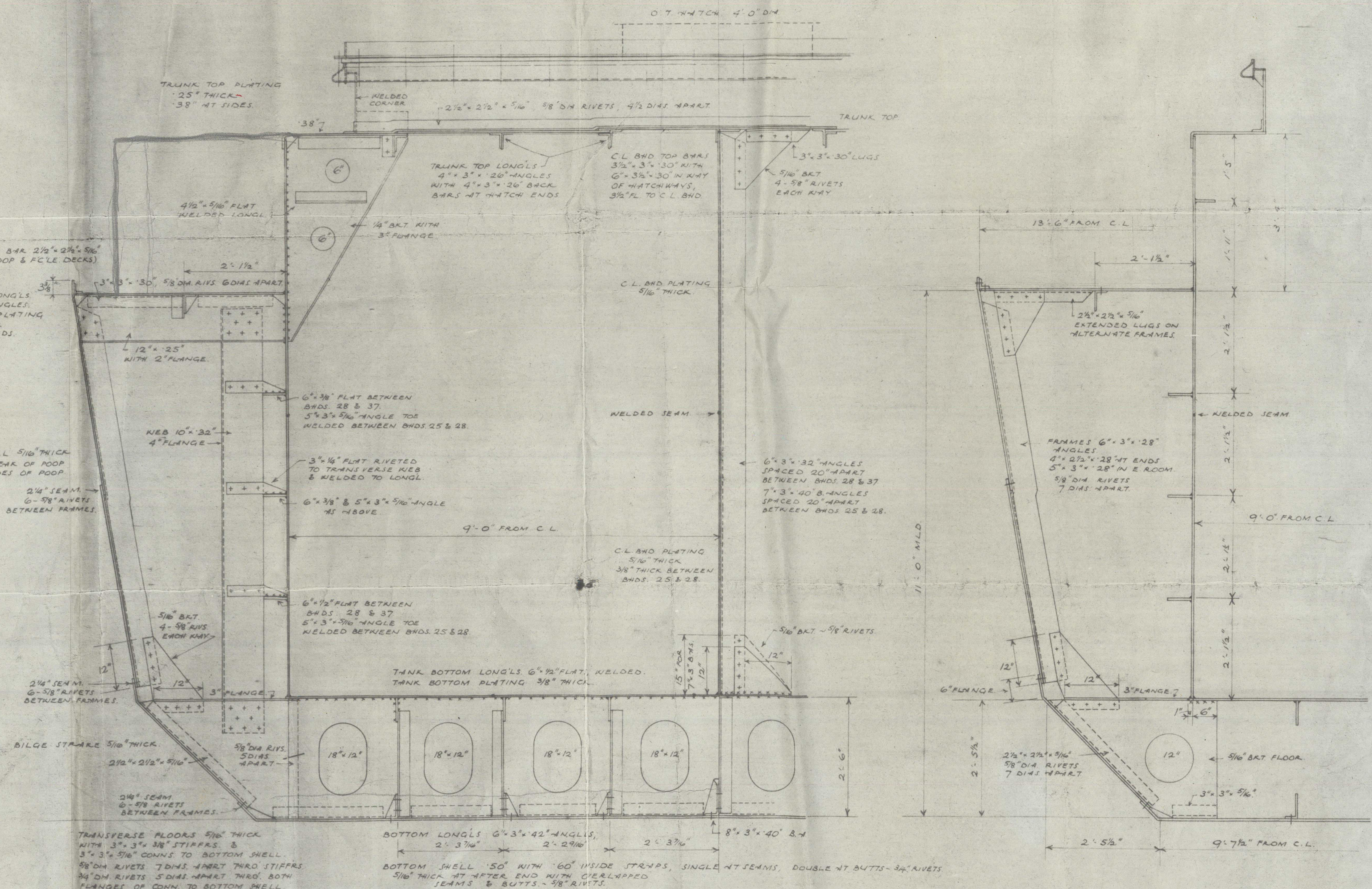


EQUIPMENT. - C 16.

2 BOWER ANCHORS (STOCKLESS) ~ 9 CWTs  
1 STREAM ANCHOR (EX STOCK) ~ 3 CWTs  
65 FATHOMS 1" STUD LINK GABLE  
45 FATHOMS STREAM WIRE 2 1/2" CIRC 9/12 CONSTR  
75 FATHOMS TOW LINE 2 1/2" CIRC 9/12 CONSTR  
90 FATHOMS TANKER 1 @ 5 1/2" CIRC HEMP.



MIDSHIP BULKHEAD.



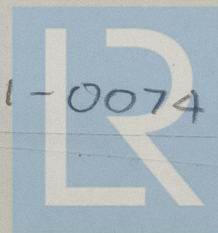
MIDSHIP TRANSVERSE.

MIDSHIP FRAME.



MIDSHIP SECTION.

010652-010661-0074



© 2021

Lloyd's Register  
Foundation