

Lloyd's Register of Shipping.

SURVEYS FOR FREEBOARD.

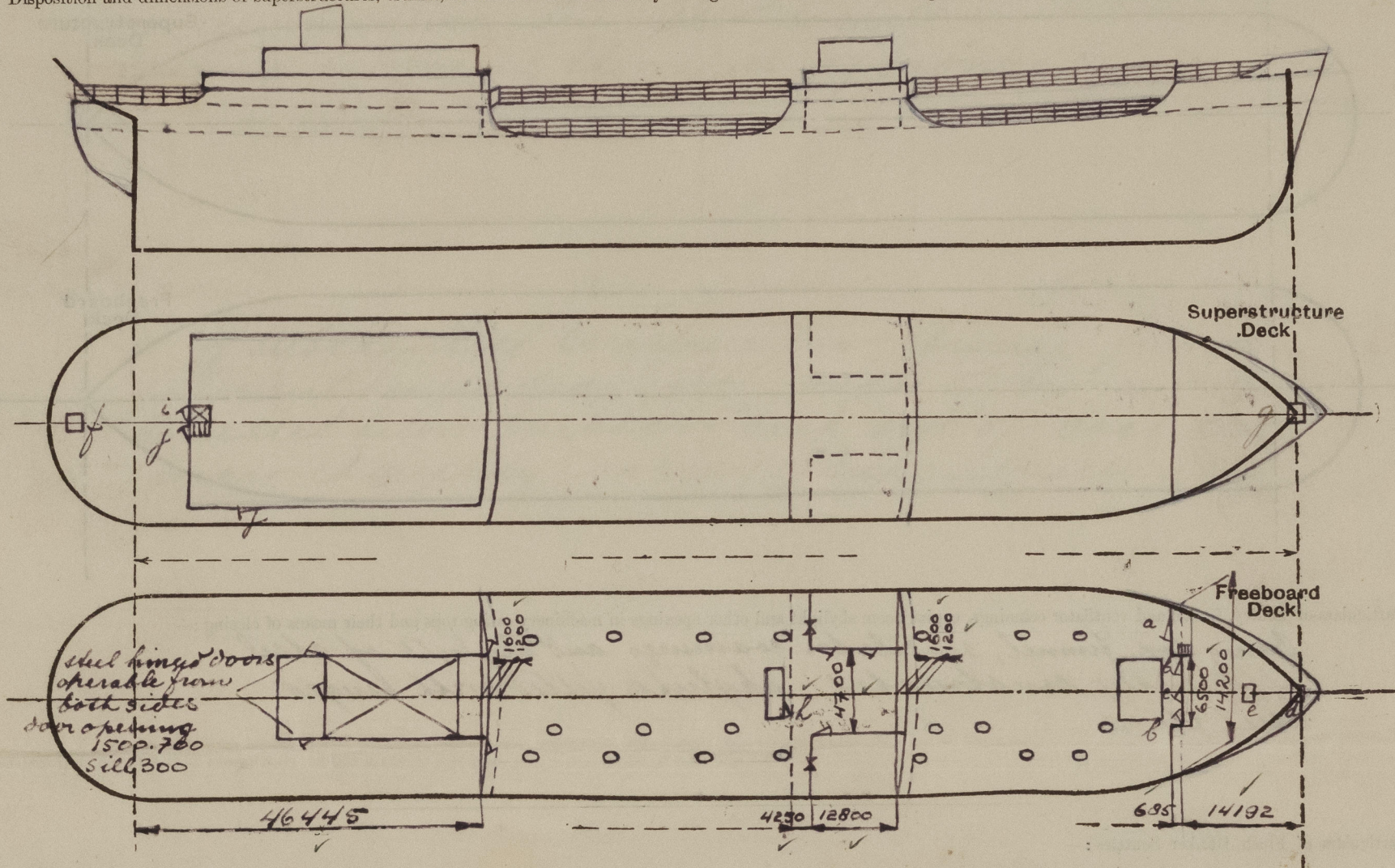
(CONDITIONS OF ASSIGNMENT.)

N^o 33212

23 FEB 1951

Ship's Name "SAN LORENZO" Port of Survey Rotterdam
 Official Number _____ Surveyor's Signature Mriskool
 Nationality and Port of Registry Argentine Buenos Aires Date of Survey while building

Disposition and dimensions of superstructures, trunks, deckhouses and machinery casings to be inserted in the diagrams and tabular statement:—



Particulars of Superstructures, Trunks, Casings, Deckhouses.

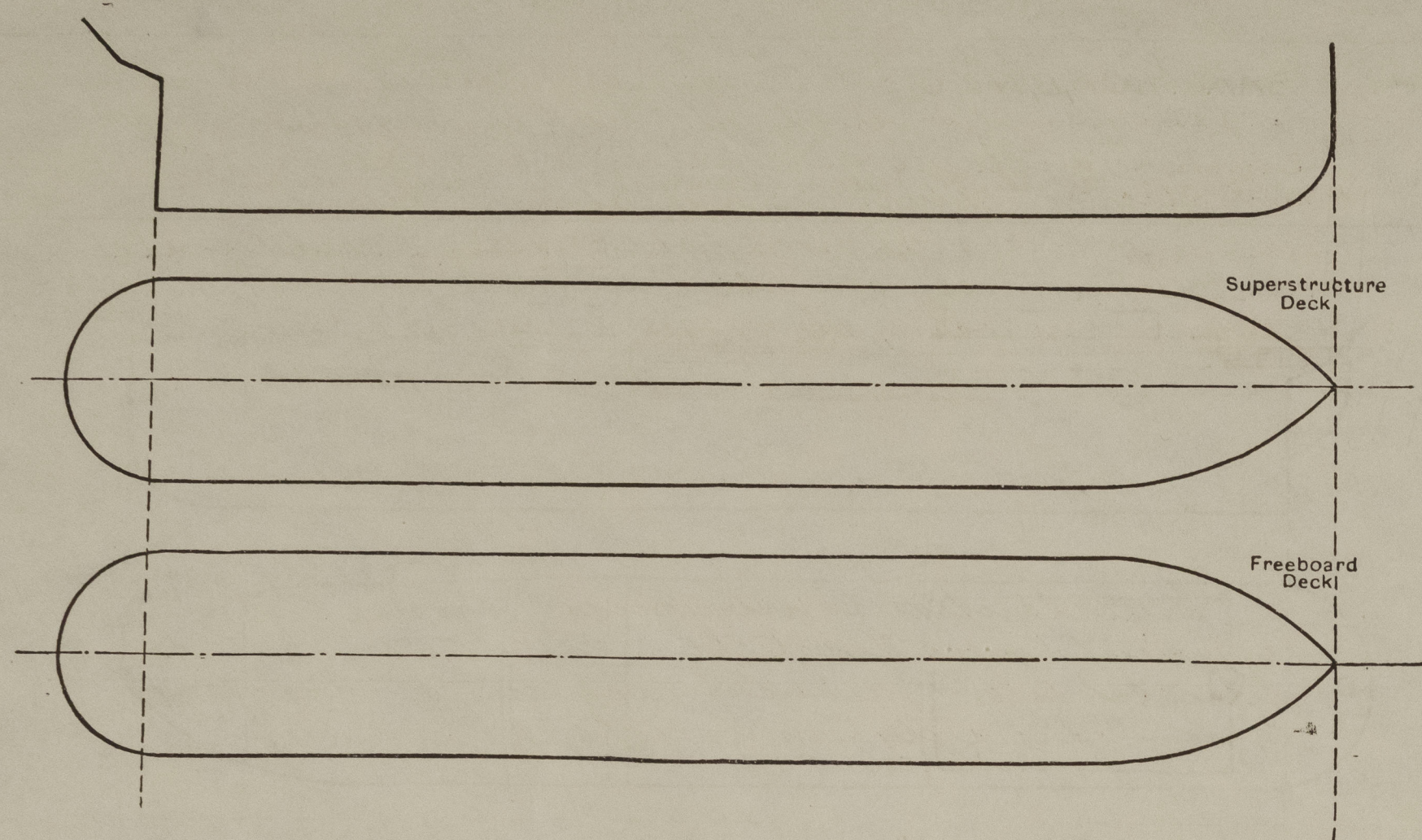
	Coaming	Plating	Stiffeners	Spacing	End Attachments of Stiffeners	Size of Openings	Height of Sills	Height of Casings
Poop Bulkhead ...	12	11	L240.90.14	760	elect. welded	1350.700	610	✓
Raised Quarter Deck Bulkhead ...								
Bridge, After Bulkhead ...	10	7 1/2	L100.65.8	800	none	1530x1220	610	✓
Bridge, Forward Bulkhead ...	11	11	L250.90.14	760	elect. welded	1600x700	350	✓
Forecastle Bulkhead ...	10	7 1/2	L100.75.8	760	none	a 1500.700 b 1750.630 c 1600.630	500 230 370	✓
Trunk, Aft ...								
Trunk, Forward ...								
Exposed Machinery Casings on Freeboard or Raised Quarter Decks ...								
Exposed Machinery Casings on Superstructure Decks ...								
Machinery Casings within Superstructures not fitted with Class I Closing Appliances ...								
Deckhouses on Flush Deck Ships ...								

Particulars of Closing Appliances (state if capable of being manipulated from both sides).

Poop Bulkhead ...	Steel hinged, m.s. doors, capable of being manipulated from both sides ✓
Raised Quarter Deck Bulkhead ...	
Bridge, After Bulkhead ...	steel plates on hookbolt not passing through bulkhead ✓
Bridge, Forward Bulkhead ...	steel hinged m.s. door, capable of being manipulated from both sides ✓
Forecastle Bulkhead ...	✓
Exposed Machinery Casings on Freeboard or Raised Quarter Decks ...	b.e. steel hinged doors capable of being manipulated from both sides ✓
Exposed Machinery Casings on Superstructure Decks ...	
Machinery Casings within Superstructures not fitted with Class I Closing Appliances ...	
Deckhouses on Flush Deck Ships ...	

PARTICULARS OF PROTECTION TO OPENINGS, ETC.

The following diagrams should be used to indicate the positions of cargo and coaling hatchways, gangway, cargo and coaling ports, ventilators, companionways, etc., which would affect the seaworthiness of the ship:—



Particulars of fiddle, funnel and ventilator coamings, engine room skylight and other openings in machinery casing tops and their means of closing:—

Casing top, funnel, ventilator coamings and skylight of steel, efficiently constructed; skylight fitted with hinged steel flaps.

Particulars of Flush Bunker Scuttles:—

none

Particulars of Companionways:—

Leading to	Door opening	Sill	Door
a forward pump room	1500.700	500	hinged, steel, m.t.
to pump room amidships	1500.700	610	
to engine room (escape)	1600.750	460	
to poop space	1450.750	550	hinged, strong, steel

all doors operable from both sides.

Particulars of Ventilators in exposed positions on freeboard and superstructure decks:—

Situated	Dia	Height and thickness
fore	640	11000.10*
	297	965.8 1/2*
	640	992.10*
pump room (bridge deck level)	484	10240.12 1/2*
Poop deck	145	915 4*
	753	11240 12 1/2*

* fitted with wooden plugs and canvas covers
* fitted with rain caps

ventilator coamings over 920 mm high efficiently stayed or braced

Particulars of Air Pipes in exposed positions on freeboard, raised quarter, or superstructure decks:—

Poop and fore deck 460 mm high
Main deck 920 " " ✓

Passenest airpipes fitted with wooden plugs
Airpipes over oil fuel tanks filled with canvas covers
wire guaze

Particulars of Gangway Cargo and Coaling Ports:—

none

San Lorenzo.

Particulars of Scuppers and Sanitary Discharge Pipes:—

Scuppers in mells: strong steel bends through ship's sides
Sanitary discharges from spaces on bridge and poop deck:
automatic non return valves (at ship's sides) ✓
Sanitary discharges from poop space: 2 automatic non return valves; one filler to shell ✓
Castings enclosing the valves of bronze ✓

Particulars of Side Scuttles:—

of substantial construction; bronze frames, efficient hinged deadlights; made of bronze where situated below freeboard deck and of cast iron (improved quality) in way of superstructures

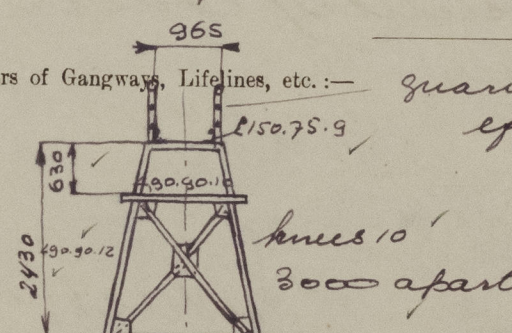
Vertical distance of Sill of lowest Side Scuttle above top of keel

10150 ✓

Particulars of Guard Rails:—

On fore deck, mells, after part of poop deck; height 1100; 3 rails, stanchions 1300 apart; efficiently constructed

Particulars of Gangways, Lifelines, etc.:—



guard rails; high 1067; 3 rails; stanchions 1200 apart efficiently constructed

Particulars of Freeing Arrangements.

	Length of Bulwark	Height of Bulwark	Size of Freeing Ports	Number each side	Area each side	Rule area each side
After Well ...						
Forward Well ...						

State position of each freeing port ... After Well:—
(F. and A. position and height above deck edge) Forward Well:—

sheer edge about deck
300 mm

State whether the freeing ports are fitted with shutters, bars, or rails, and give particulars of such:—

Additional area where sheer is less than standard.

PARTICULARS OF PROTECTION TO OPENINGS, ETC.

HATCHWAYS ON FREEBOARD AND SUPERSTRUCTURE DECKS.									
Description of Hatchway			over dry cargo hold		over cargo tanks				
Dimensions of Hatchway			6200.4100 ✓		O 915.675 ✓				
COAMINGS	{	Height above Deck ...	760 ✓		915 ✓				
		Thickness { Sides ...	11		10 ✓				
			{ Ends ...	11		10			
		Stiffeners ...		L 180.90.11		—			
		Brackets, Stays ...	7 300.16 ✓		—				
HATCH BEAMS	{	Number ...							
		Spacing ...							
		Scantling and Sketch ...	none		none				
		Bearing Surface ...							
FORE AND AFTERS	{	Number ...							
		Spacing ...							
		Unsupported Lengths ...	none		none				
		Scantling* and Sketch ...							
		Bearing Surface ...							
HATCH COVERS	{	Material ...	steel *		steel ✓				
		Thickness ...	12 1/2		12 1/2				
		How fitted ...	hinged		hinged				
		Bearing Surface ...							
Spacing of Cleats			40 7/8 toggles		365/toggles				
Number of Tarpaulins			— ✓						
*Are wood fore and afters steel shod at all bearing surfaces ?					* stiffened by L 130.50.12				
Are battens and wedges efficient and in good condition ?					3 bars longitudinal ✓				
Are tarpaulins in good condition and in accordance with rule requirements ?					9 " transverse ✓				
Are lashings provided in accordance with rule requirements ?									

Particulars of any special features :—

Small hatchways ✓

marker	opening	coaming	cover
d	1000.1000	2 30.10	} steel hinges n.t. closed with toggles
e	770.600	2 30.10	
f	800.520	2 30.9	
g	1000.1000	6 10.10	

Shedlight over pumproom efficiently constructed
and fitted with hinged steel flaps. ✓

Endorsement at first survey and at surveys for renewal of Certificate :—

The fittings and appliances are in accordance with the particulars shown on this form (or as now modified) and are in good condition.

Wiskoot

