

10.5.35



MOTOR BARGE N° 232

RUDDER AND STERNFRAME

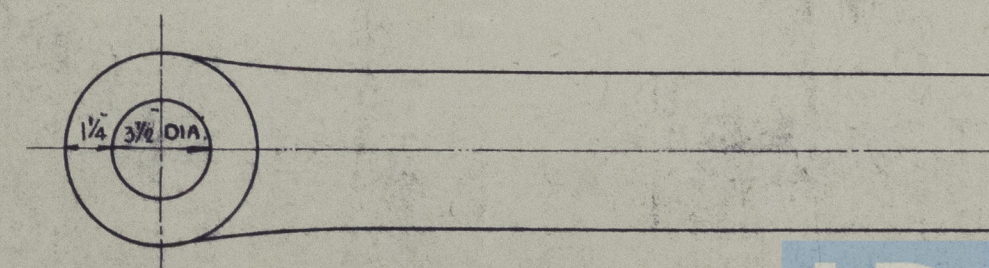
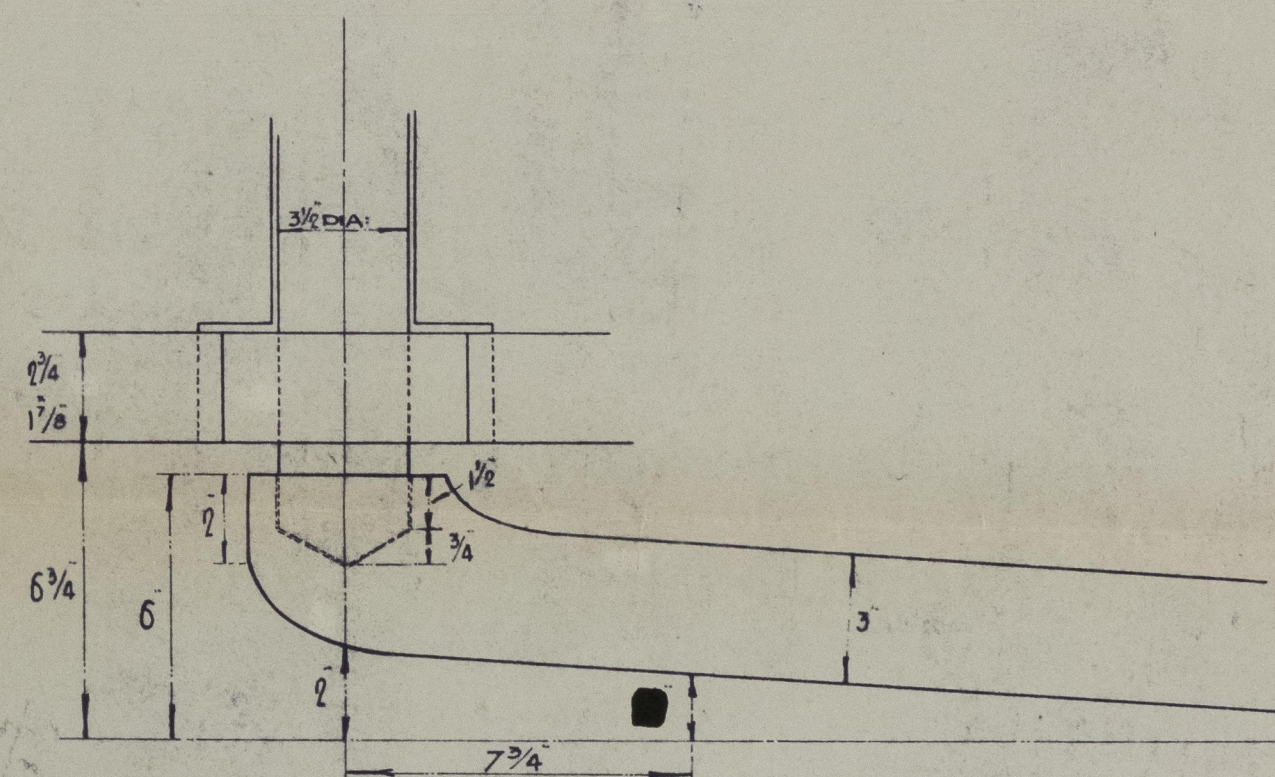
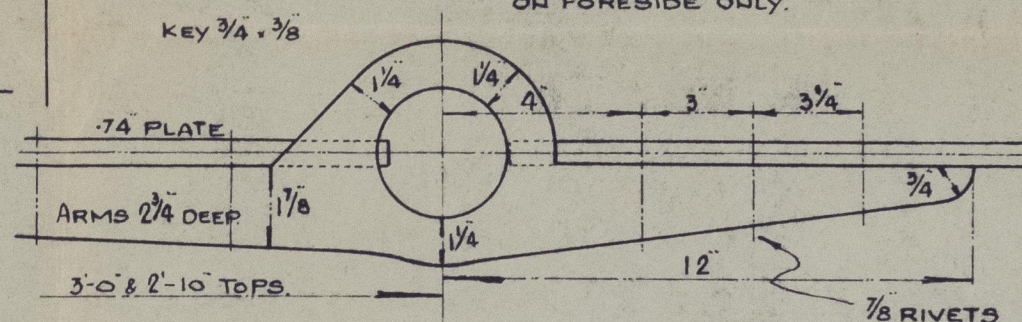
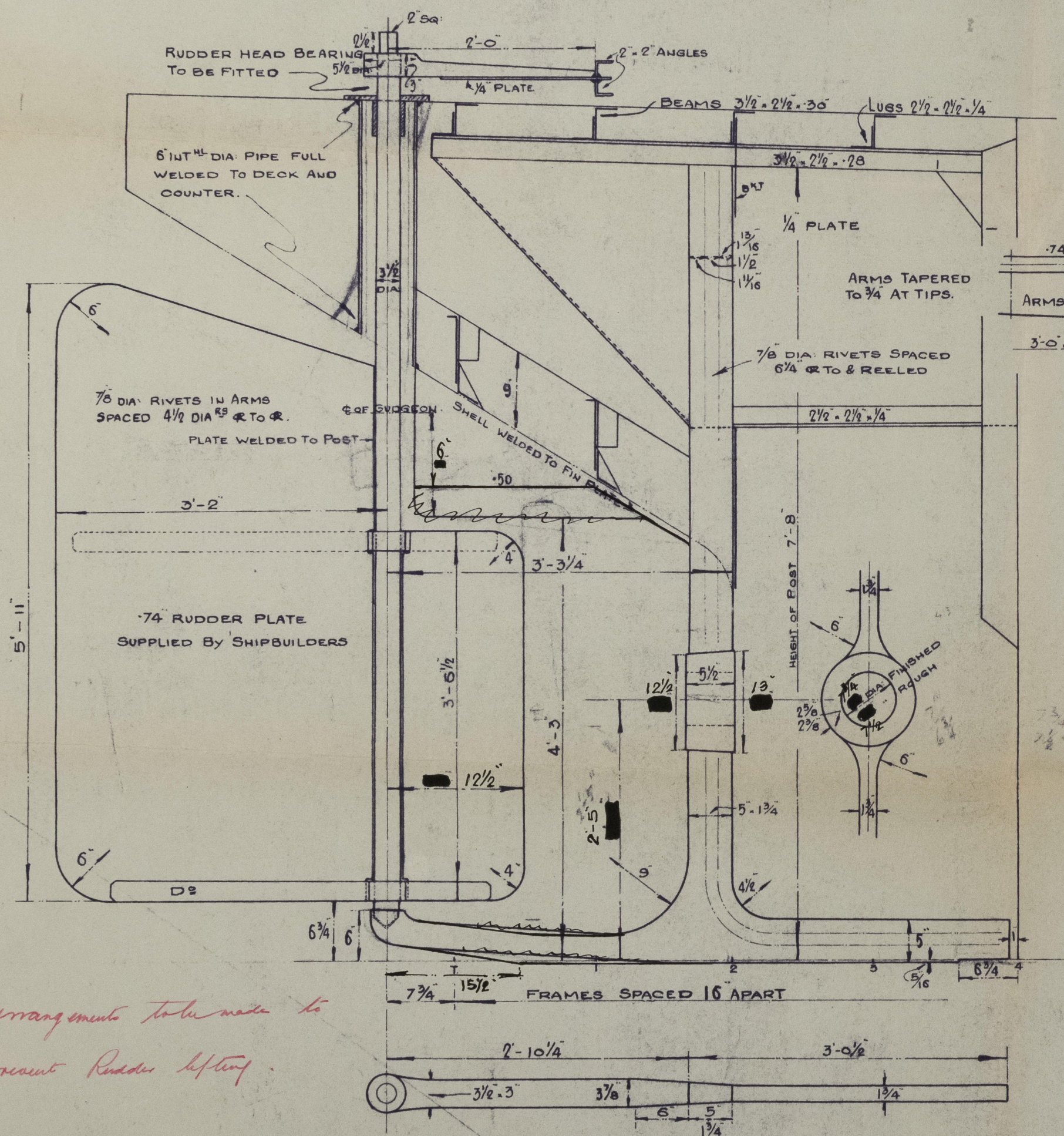
TO CLASS LLOYDS 100A - BARGE CARRYING PETROLEUM
IN BULK, FOR SERVICE ON RIVER SEVERN, LIMITING PORT SEAWARDS AVONMOUTH

FORGED SCRAP IRON

SCALE: 1/8" = 1 FOOT

Speed assumed 8 Knots.

RUDDER PLATE TACK WELDED
TO RUDDER STOCK EVERY 9"
ON FORESIDE ONLY.



*Arrangements taken made to
prevent Rudder lifting.*

Chas. Hill & Sons Ltd.

No. 23²X.

Ruddes & Stern frame.

"SEVERN TRAVELLER"



© 2020

Lloyd's Register
Foundation

010637-010639-0002