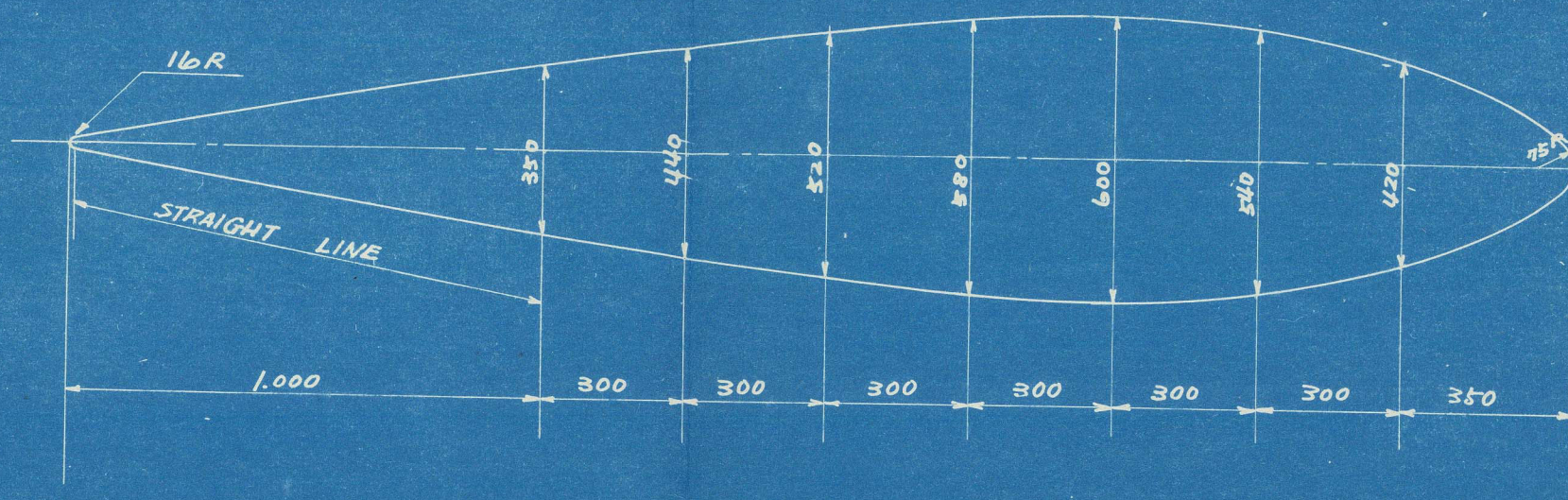
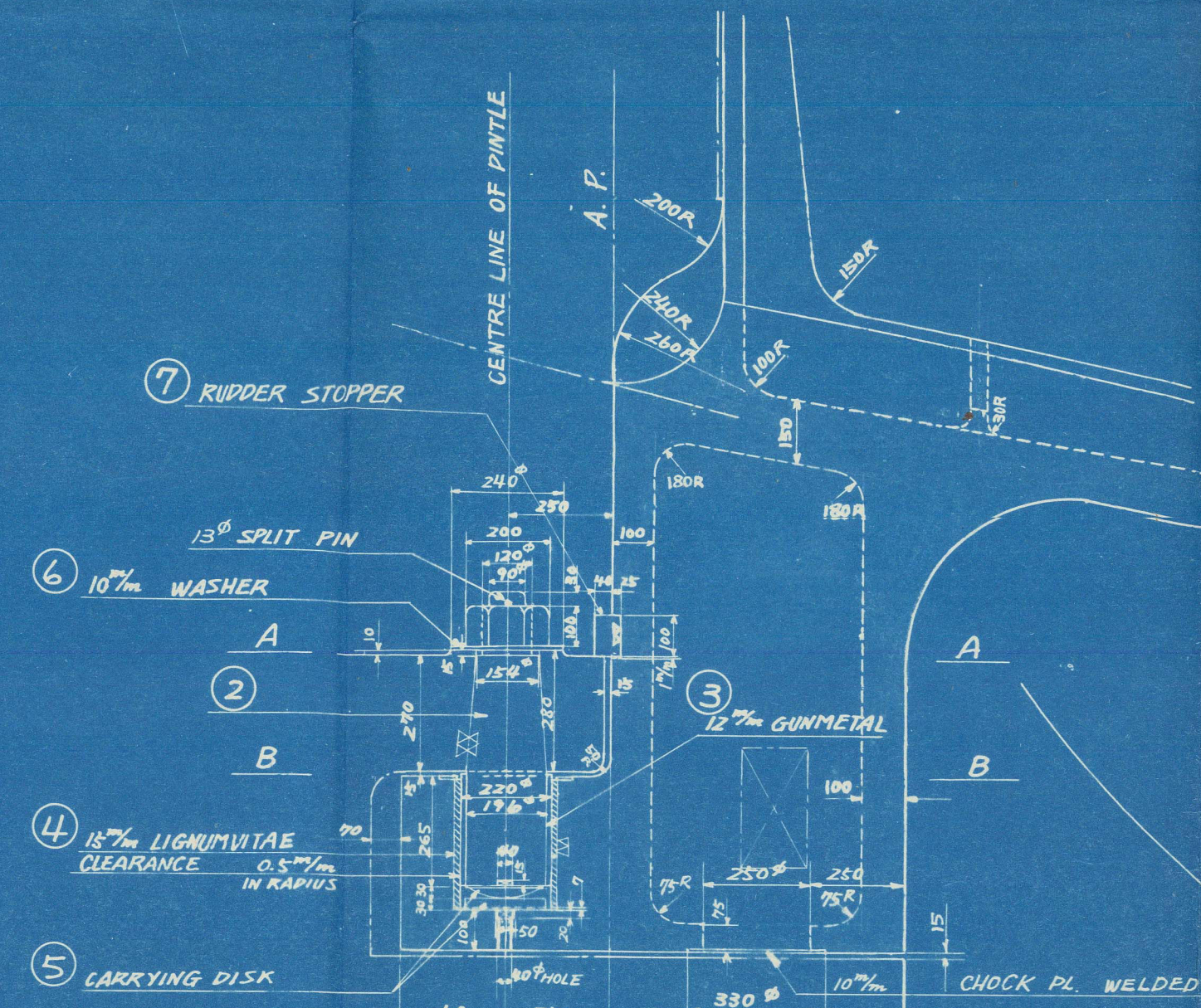


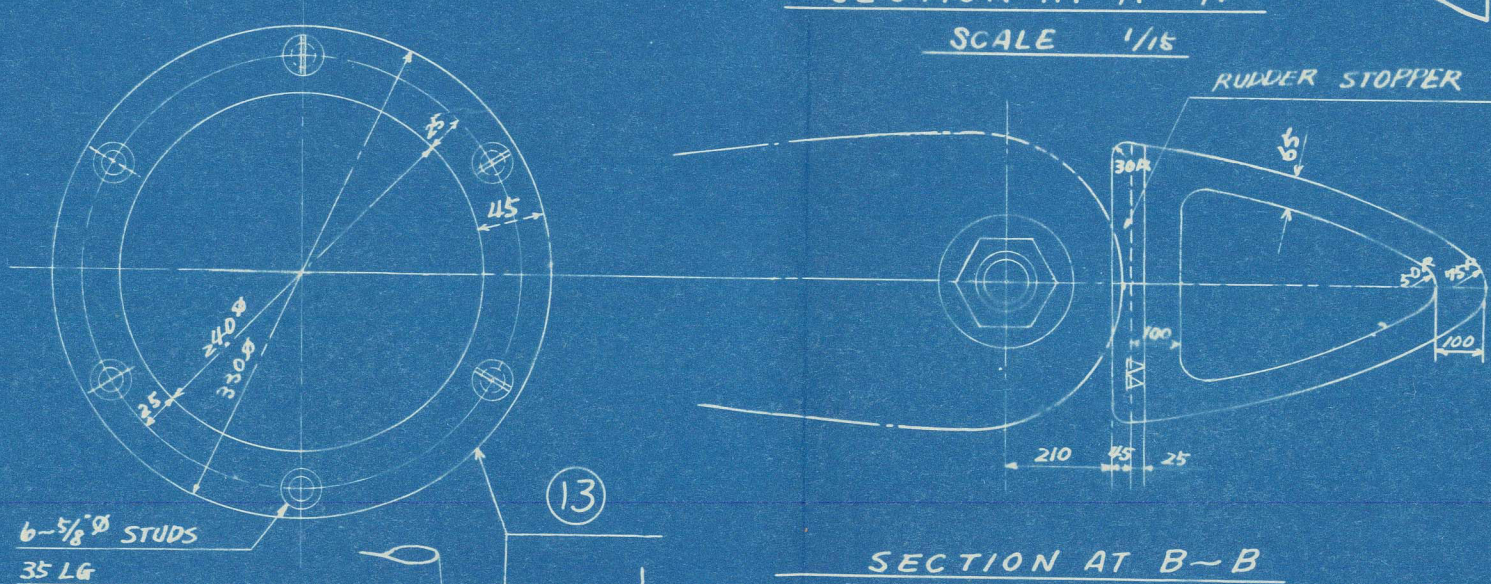
MASTER SECTION OF RUDDER
INCLUDING RUDDER PLATE THICKNESS
SCALE 1/16



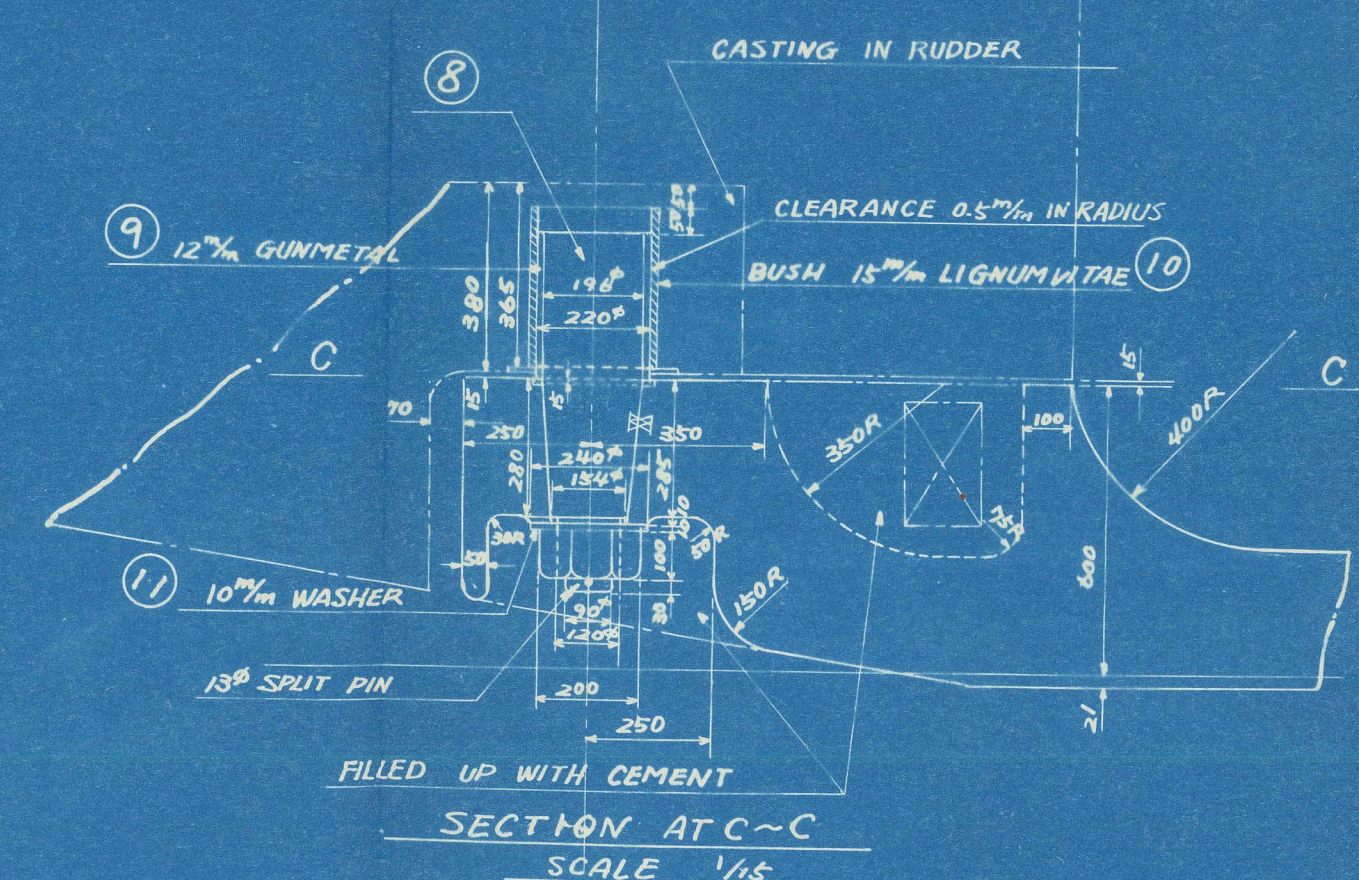
DETAIL AT TOP PINTLE
SCALE 1/16



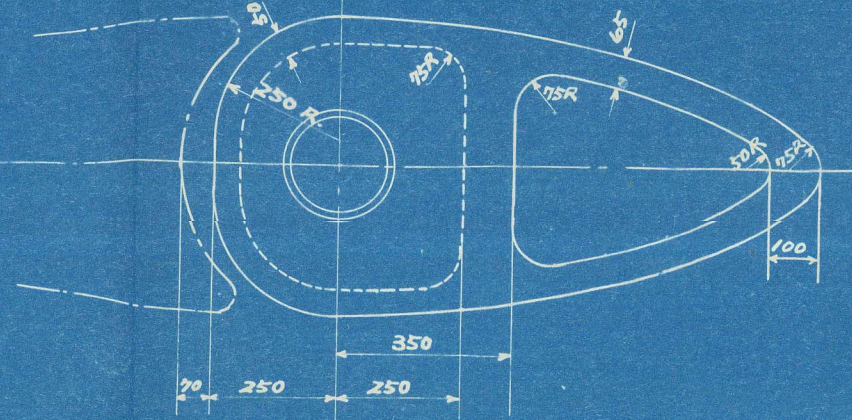
SECTION AT A-A
SCALE 1/16



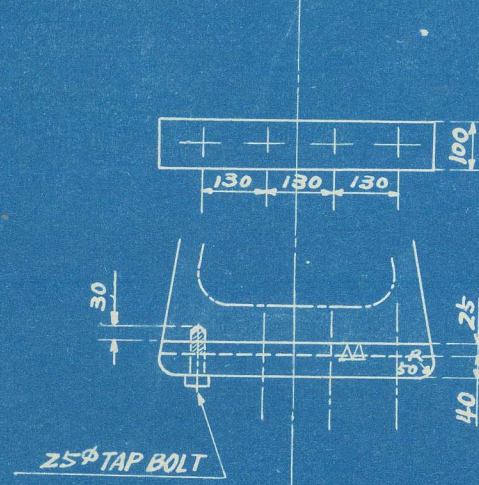
DETAIL AT BOTTOM PINTLE
SCALE 1/16



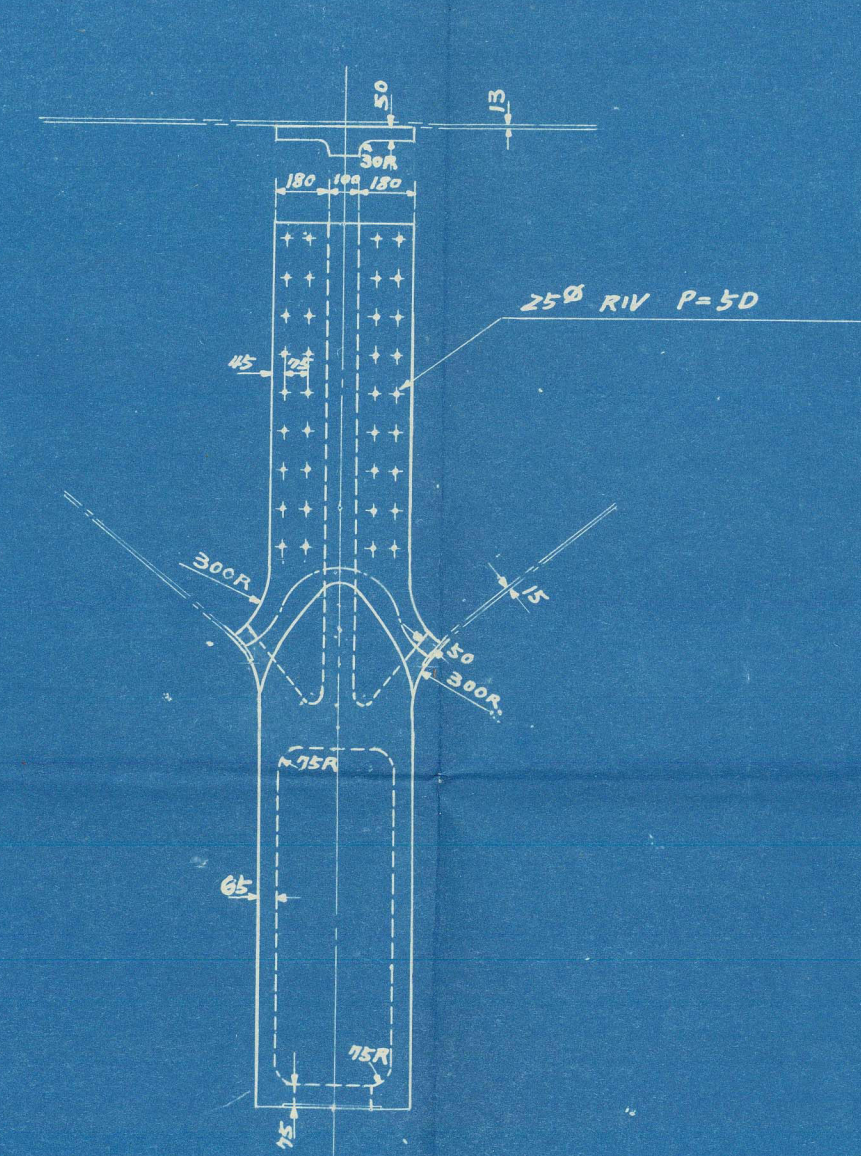
SECTION AT C-C
SCALE 1/16



7 RUDDER STOPPER
SCALE 1/16



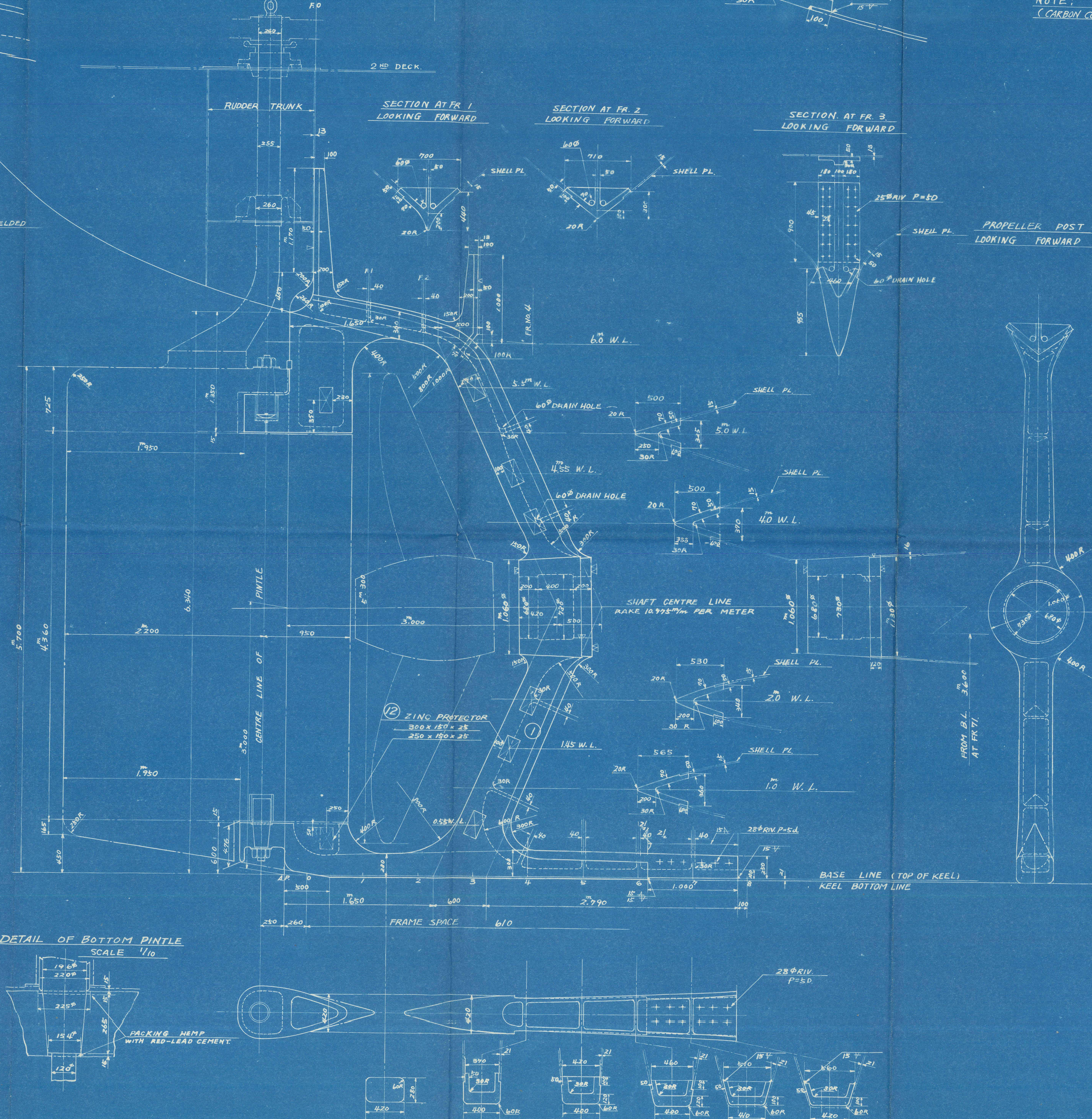
SECTION AT FR. 0
LOOKING FORWARD



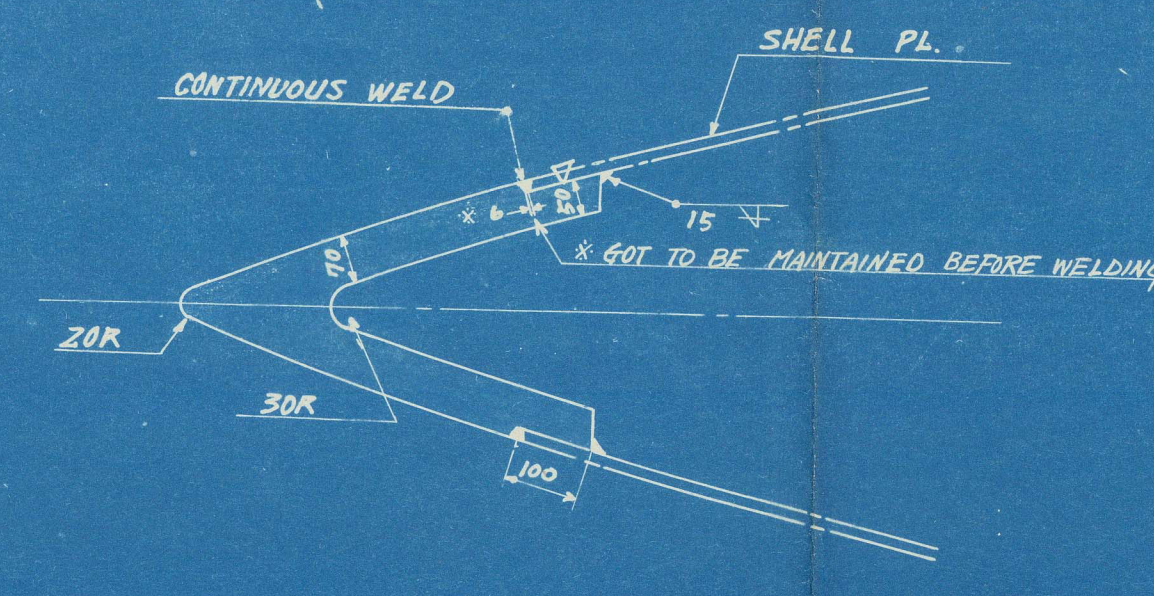
SECTION AT FR. 1
LOOKING FORWARD

SECTION AT FR. 2
LOOKING FORWARD

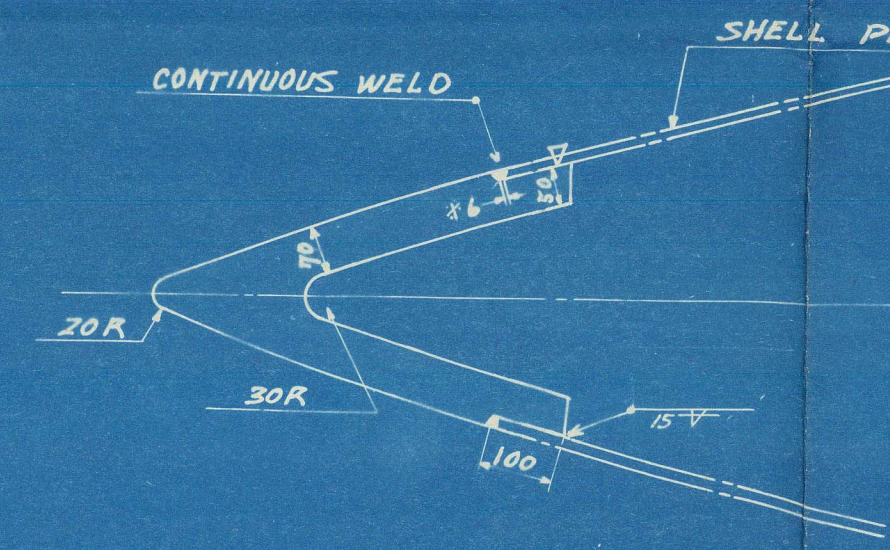
SECTION AT FR. 3
LOOKING FORWARD



DETAIL OF SHELL LANDING AT ABOVE BOSS
SCALE 1/10



DETAIL OF SHELL LANDING AT BELOW BOSS
SCALE 1/10



STERN FRAME

SCALE 1/16 GENERAL 1/16, DETAILS 1/10, 1/16, 1/32

MATERIAL LIST

MARK	NOMENCLATURE	MATERIAL	NO	WEIGHT	MAKING	FINISHING
①	STERN FRAME	CAST STEEL	1	16700	外 註	外 註
②	TOP PINTLE	FORGED STEEL	1	"	"	"
③	WITH NUT & SPLIT PIN	GUNMETAL	1	"	"	"
④	SLEEVE FOR TOP PINTLE	LIGNUMVITAE	1	"	"	"
⑤	BUSH FOR TOP PINTLE	GUNMETAL	1	"	"	"
⑥	HARDENED CARRYING DISK	HARD STEEL	1	"	"	"
⑦	WASHER	STAINLESS STEEL	1	"	"	"
⑧	RUDDER STOPPER	FORGED STEEL	1	"	"	"
⑨	WITH NUT & SPLIT PIN	FORGED STEEL	1	"	"	"
⑩	SLEEVE FOR BOTTOM PINTLE	GUNMETAL	1	"	"	"
⑪	BUSH FOR BOTTOM PINTLE	LIGNUMVITAE	1	"	"	"
⑫	WASHER	STAINLESS STEEL	1	"	"	"
⑬	ZINC PROTECTOR	ZINC PLATE	16	"	"	"

NOTE: MATERIALS OF STERN FRAME & PINTLES TO BE TESTED BY LLOYD'S.
(CARBON CONTENT OF STEEL CASTING NOT TO EXCEED .30% FOR WELDING) AND F. I. E.

NOTE:

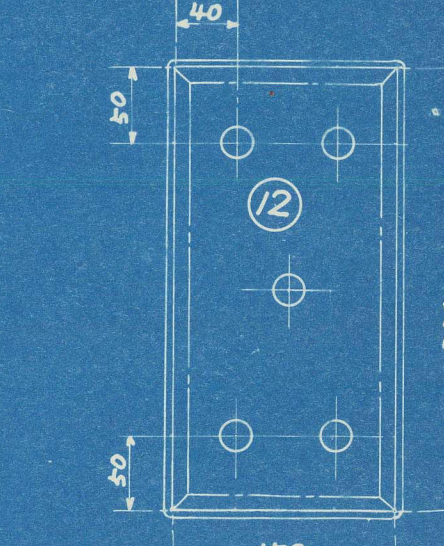
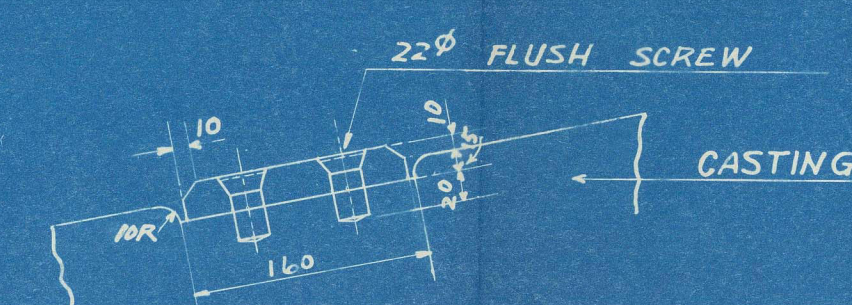
1. DIAMETER OF RUDDER HEAD IS SUBMITTED FOR APPROVAL ON THIS DRAWING.
2. WEIGHTS OF RUDDER AND RUDDER HEAD TO BE SUPPORTED AT TOP PINTLE.

PARTICULARS OF RUDDER.

1	TYPE	BALANCED REACTION TYPE
2	RUDDER AREA	
	AREA FORWARD OF PINTLES CENTRE LINE (AF)	4.142 (44.39)
	AREA AFT PINTLES CENTRE LINE (AA)	1.801 (18.79)
	TOTAL AREA	A = AF + AA = 5.943 (63.18)
3	RUDDER HEAD	
	HORIZONTAL DISTANCE FROM CENTRE OF GRAVITY OF "A" TO PINTLES' CENTRE LINE (D)	0.870 (9.13)
	NUMERICAL	N = A x D = 5.181 x 0.870 = 4.507
	HORIZONTAL DISTANCE FROM CENTRE OF GRAVITY OF "A" TO PINTLES' CENTRE LINE (D1)	1.113 (11.69)
	NUMERICAL	N1 = A x D1 = 5.943 x 1.113 = 6.614
	80% OF N1	4.891 x 0.8 = 3.913
	SRA SPEED	13 KNOTS 1/2
4	PINTLES	
	AREA SUPPORTED BY UPPER PINTLE	2.528 (26.58)
	AREA - BOTTOM	3.415 (35.60)
	DIAMETER OF UPPER & BOTTOM PINTLES	220 mm

DEGREE OF FINISHING
V ROUGH FINISH
VII MEDIUM FINISH

ATTACHMENT OF ZINC PROTECTOR
SCALE 1/5



興 名 丸
S 101

STERN
FRAME
(FINISHED PLAN)

船 尾 材

(完成圖)

SCALE	1/16, 1/10, 1/32	DEPARTMENT	DESIGN
ITEM	H - 31	NO. 1	DESIGNING SECTION
DESIGNED	DEC-15-1951	DESIGNED	DESIGNED
ISSUED	127.2.15	ISSUED	ISSUED
PL. No.	H-5372	PL. No.	PL. No.

RECORDS DEPT
LONDON

7

Komei Maru

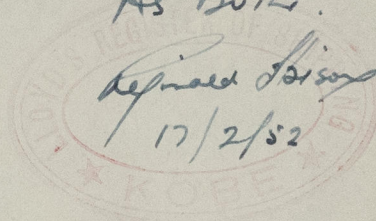


Sternframe

As Built.

Reynold S. Sison

17/2/52



© 2021
MAR 24 1952

Lloyd's Register
Foundation

010615-010623-0105