

SCALE : $\frac{1}{2}" = 1'-0"$

FOR RIVETING.

BUTTS OF KEELPLATE TREBLE THROUGHOUT.

" " SIDEPLATING FROM KEEL TO STR. BELOW SHEERSTR.

TREBLE FOR 1/2 L. DOUBLE AT ENDS WHERE NOT EXCEEDING .42"

BUTTS OF SHEERSTRAKE AND STR. BELOW

TREBLE FOR 1/2 L. TO DOUBLE AT ENDS WHERE NOT EXCEEDING .42"

SEAMS OF OUTSIDE PLATING, KEELPL. INCL. TO UPPERTURN

OF BILGE DOUBLE THROUGHOUT.

SEAMS OF OUTSIDE PLATING FROM UPPERTURN OF BILGE.

SHEERSTRAKE INCL. SINGLE THROUGHOUT. SEC 30 CLAUSE 6

BUTTS OF CENTREHINDER TREBLE THROUGHOUT.

" " MARKINPLATE DOUBLE THROUGHOUT.

" " TANKTOPCENTRESTRAKE DOUBLE THROUGHOUT.

" " TANKTOPPLATING DOUBLE FOR 1/2 L. TO SINGLE "

AT ENDS.

SEAMS OF TANKTOPPLATING SINGLE THROUGHOUT "

BUTTS OF UPPERDECK STRINGERPLATE DOUBLE THROUGHOUT.

" " " " PLATING DOUBLE FOR 1/2 L.

TO SINGLE AT ENDS.

BUTTS OF SECONDDECK STRINGERPL. DOUBLE THROUGHOUT

" " " " PLATING DOUBLE FOR 1/2 L.

TO SINGLE AT ENDS.

SEAMS OF UPPER AND SECONDDECK PLATING

STRINGERPL. INCL. SINGLE THROUGHOUT.

RIVETS THROUGH SIDERAMES TO SHELL 7 DIAM. APART.

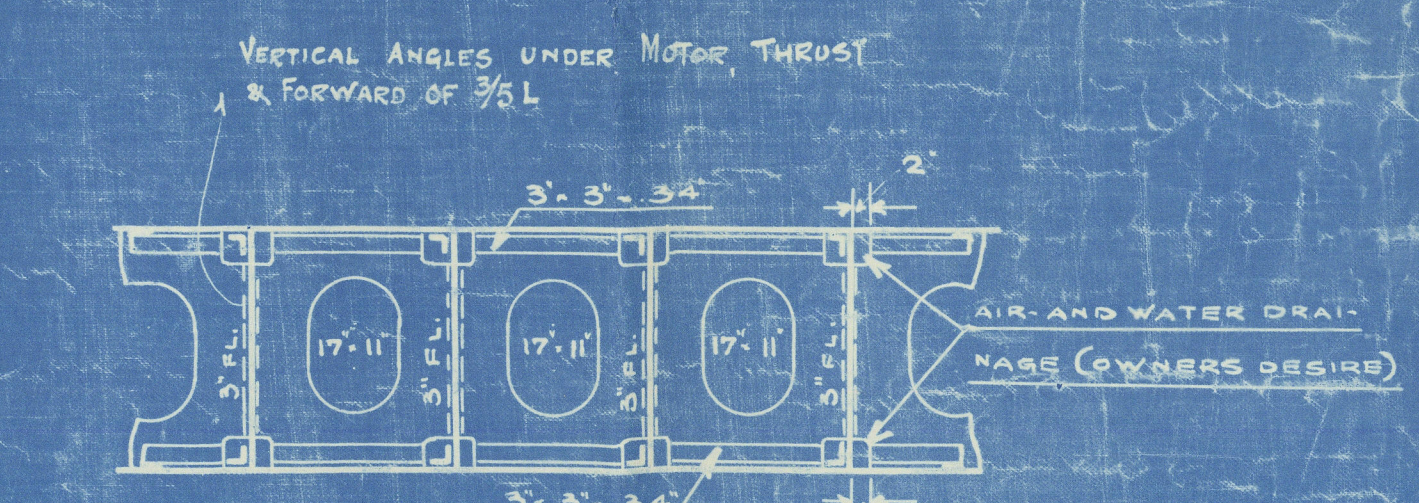
" SEAMS AND BUTTS OF INNER BOTTOM PLATING NOT TO BE LESS

THAN DOUBLE RIVETED IN WAY OF OIL FUEL WHERE NO

CEILING IS LAID AS IN MOTORROOM.

EQUIVALENT SECTIONS

$5' \cdot 3' \cdot 30'' =$	$130.65 \cdot 75 \cdot 5$	
$5\frac{1}{2}' \cdot 3' \cdot 32'' =$	$140.65 \cdot 6 \cdot 5$	
$6' \cdot 3' \cdot 34'' =$	$150.70 \cdot 6 \cdot 5$	
$6\frac{1}{2}' \cdot 3' \cdot 36'' =$	$160.75 \cdot 5 \cdot 5$	
$6\frac{3}{4}' \cdot 3' \cdot 36\frac{1}{2}'' =$	$160.75 \cdot 9 \cdot 5$	
$7' \cdot 3' \cdot 36\frac{1}{2}'' =$	$160.75 \cdot 9 \cdot 5$	
$7' \cdot 3' \cdot 30'' =$	$180.75 \cdot 12.5 \cdot 5$	
$9' \cdot 3' \cdot 46\frac{1}{2}'' =$	$230.90 \cdot 11.5 \cdot 5$	
$9\frac{1}{2}' \cdot 3' \cdot 46\frac{1}{2}'' =$	$240.90 \cdot 11.5 \cdot 5$	
$5' \cdot 3' \cdot 44\frac{1}{2}'' =$	$130.75 \cdot 11 \cdot 5$	
$5' \cdot 3' \cdot 45'' =$	$130.75 \cdot 12 \cdot 5$	
$5\frac{1}{2}' \cdot 3' \cdot 36'' =$	$140.75 \cdot 5 \cdot 5$	
$6\frac{1}{2}' \cdot 3' \cdot 50'' =$	$160.90 \cdot 12.5 \cdot 5$	



W 600-600-000-000

TOP ANGLES ON FLOORS & SIDE GIRDERS & VERTICAL ANGLE
ON CENTRE GIRDER UNDER THRUST & MOTOR SPACE TO BE
DOUBLE OR SINGLE ANGLES DOUBLE RIVETED.

BURMEISTER & WAIN
COPENHAGEN.

NEWBUILDING No: 346

|| MINNIPA ||

MIDSHIP-SECTION.

{ Copenhagen
3 Report No: 7486.

5-9-27.

010605-010614.0145



© 2021

Lloyd's Register
Foundation