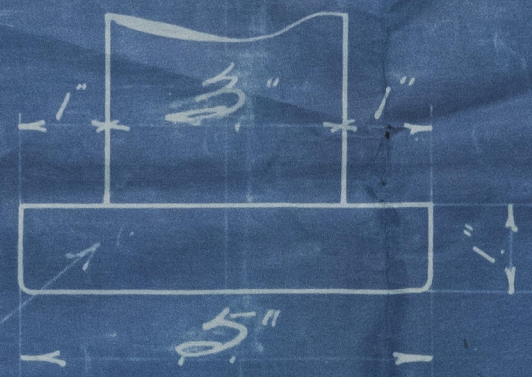


# DETAIL OF HEAD ON TOP PINTLE.



## DETAIL OF PINTLES.



## STERNFRAME.

### MERSEY CLASS TRAWLER.

Nº 994

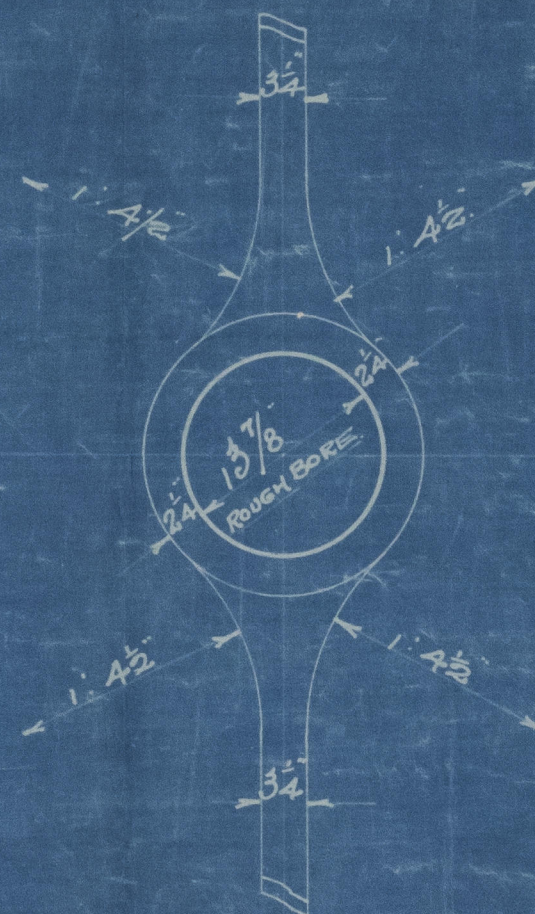
### MATERIAL - FORGED IRON

SCALE 1" = 1 FOOT.

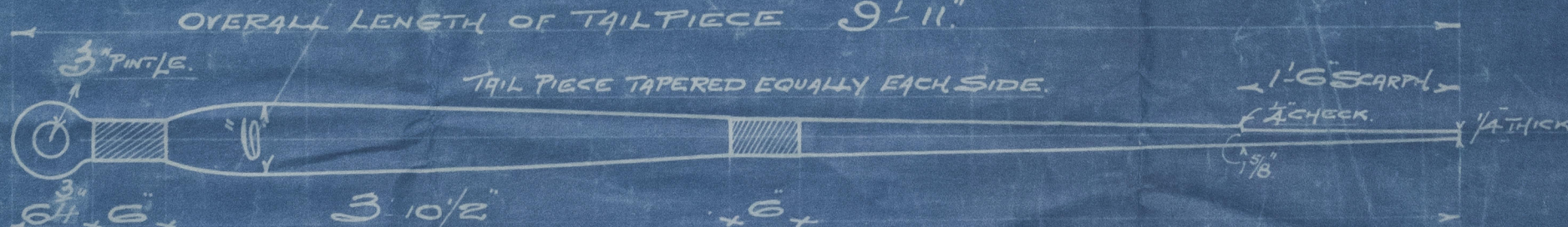
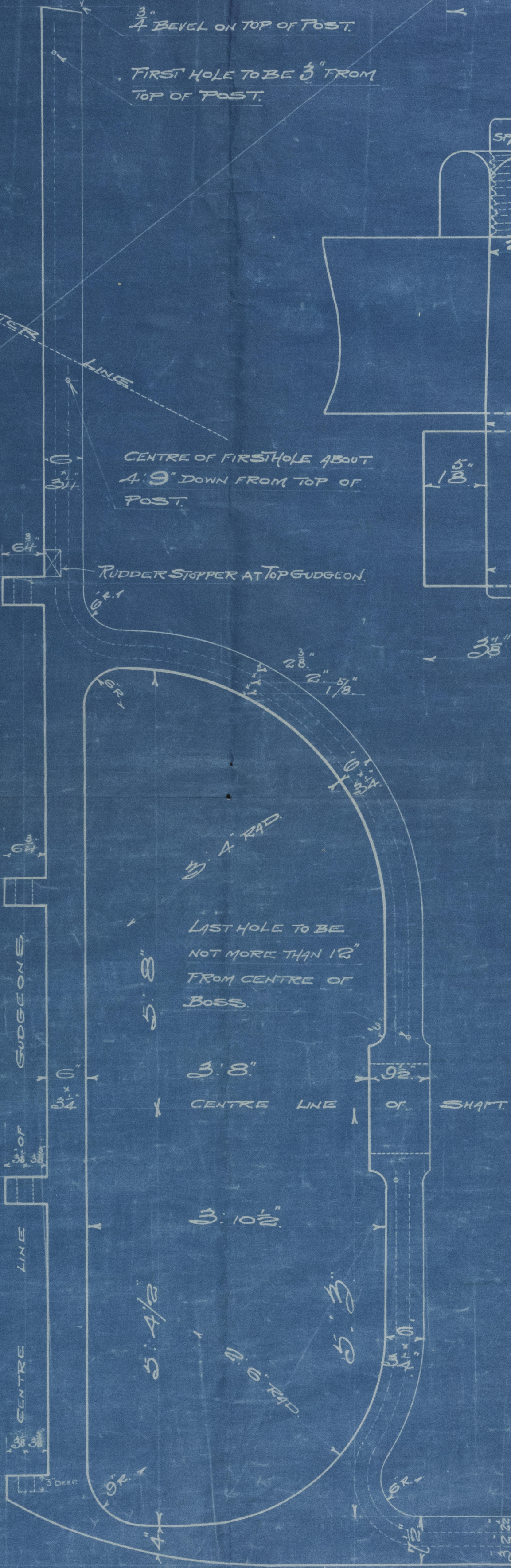
HOLES IN STERNFRAME 1" DIAM. 5" PITCH.  
ALL TO LLOYDS TESTS.  
GUDGEONS ALL 6 3/4" PROJECTION.

BORE OF BOSS AND FORE AND  
AFTER FACES OF BOSS TO BE  
SQUARE OFF THE SHAFT LINE.  
THE SHAFT DROOPS FROM AFT  
TO FORWARD 5/8" IN 4' 0".

BOSS SIDES TO BE TAPERED  
TO 5" THICKER EACH SIDE AT  
FORE END.



PLAN No. 5245  
FOR ENCLOSURE TO  
Messrs. The Surveyors  
Lloyd's Register  
FROM  
COLLIERIES & SONS, LTD.  
SHIPBUILDERS, SELEY.  
DATE 18/5/23





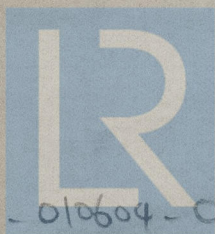
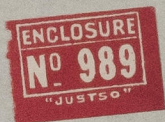
994 Ship

Cochrane & Sons Ltd.  
Glasgow.

Stern Frame,

"Foamflower"

See F. E. Report No 34144



© 2021

Lloyd's Register  
Foundation

010589-010604-0069