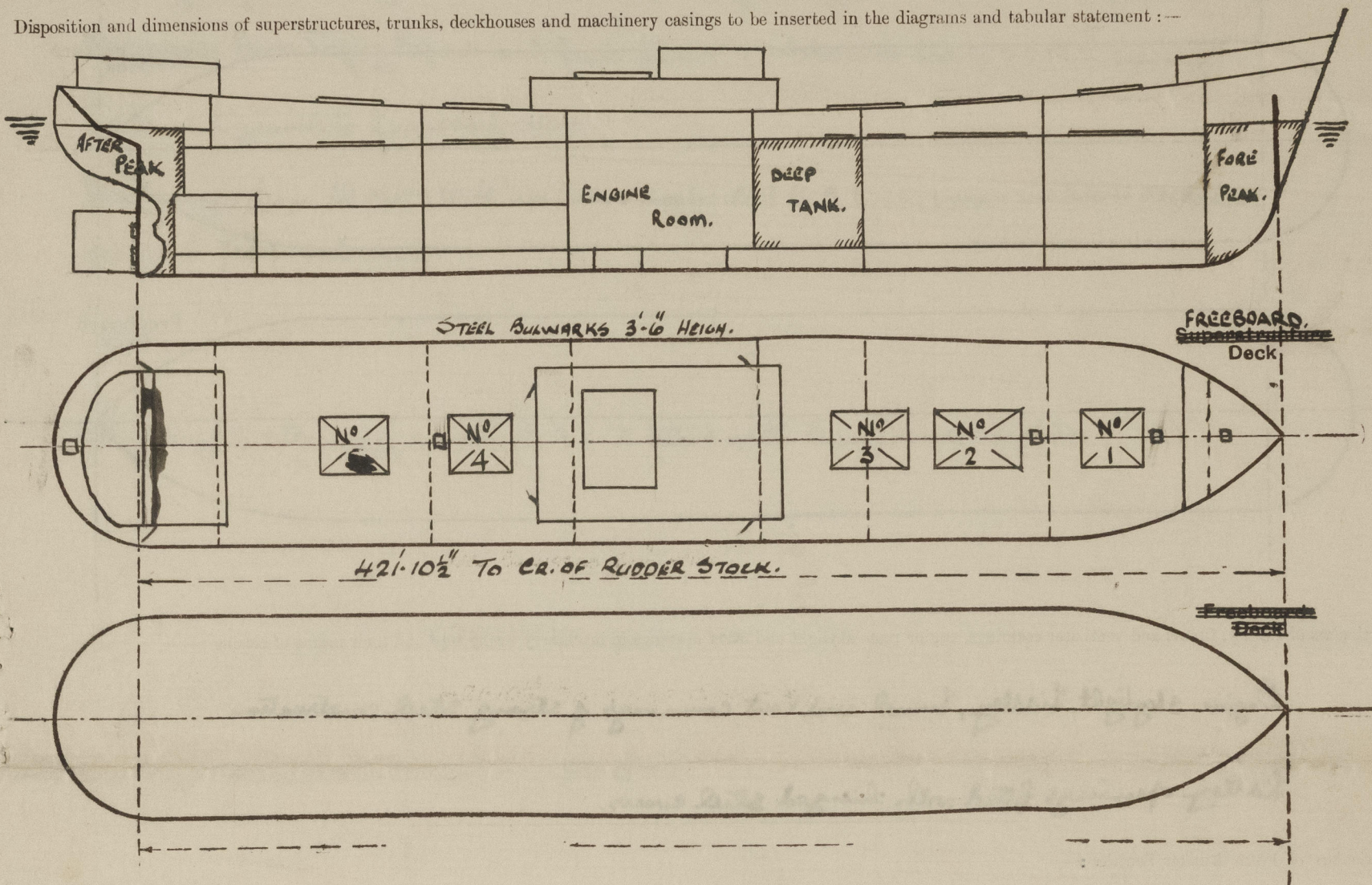


Lloyd's Register of Shipping.  
SURVEYS FOR FREEBOARD.  
(CONDITIONS OF ASSIGNMENT.)

N<sup>o</sup> 34172

Ship's Name M.V. "WEYBANK" (DOXFORDS 724) Port of Survey SUNDERLAND  
Official Number 169437 Surveyor's Signature Mal F.H. Duncan  
Nationality and Port of Registry BRITISH: GLASGOW. Date of Survey DURING CONSTRUCTION.

Disposition and dimensions of superstructures, trunks, deckhouses and machinery casings to be inserted in the diagrams and tabular statement:—



Particulars of Superstructures, Trunks, Casings, Deckhouses.								
	Coaming	Plating	Stiffeners	Spacing	End Attachments of Stiffeners	Size of Openings	Height of Sills	Height of Casings
Poop Bulkhead ... ..								
Raised Quarter Deck Bulkhead ...								
Bridge, After Bulkhead ... ..								
Bridge, Forward Bulkhead ... ..								
Forecastle Bulkhead ... ..	.30	.30	4"x3"x32 L	27"	✓	2@ 6'-0"x37"	18"	7.5'
Trunk, Aft ... ..								
Trunk, Forward ... ..								
Exposed Machinery Casings on Freeboard or Raised Quarter Decks ...								
Exposed Machinery Casings on Superstructure Decks ... ..								
Machinery Casings within Superstructures not fitted with Class I Closing Appliances ... ..								
Deckhouses on Flush Deck Ships ...	.34 .25	.30 .25	4"x3"x38 } 3"x8"x30 }	2.5'	BKTS TO B. BKTS. BTAL	✓	27 1/2" ANT 18"	7.5'
Particulars of Closing Appliances (state if capable of being manipulated from both sides).								
Poop Bulkhead ... ..								
Raised Quarter Deck Bulkhead ...								
Bridge, After Bulkhead ... ..								
Bridge, Forward Bulkhead ... ..								
Forecastle Bulkhead ... ..								
Exposed Machinery Casings on Freeboard or Raised Quarter Decks ...								
Exposed Machinery Casings on Superstructure Decks ... ..								
Machinery Casings within Superstructures not fitted with Class I Closing Appliances ... ..								
Deckhouses on Flush Deck Ships ...								

Openings closed by means of wood boards fitted in channels. ✓

Hinged steel doors operated from both sides.



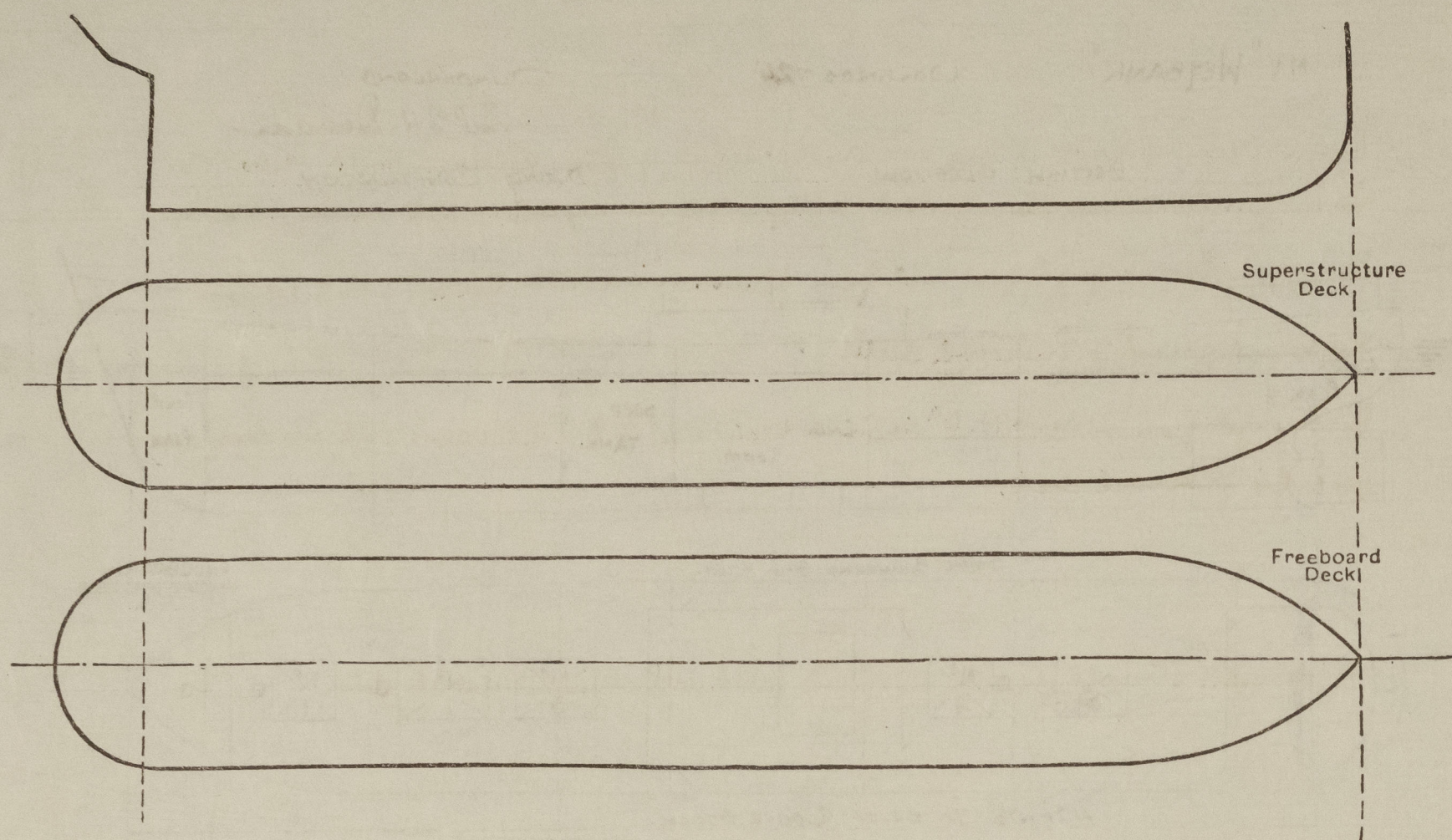
© 2021

Lloyd's Register  
Foundation



# PARTICULARS OF PROTECTION TO OPENINGS, ETC.

The following diagrams should be used to indicate the positions of cargo and coaling hatchways, gangway, cargo and coaling ports, ventilators, companionways, etc., which would affect the seaworthiness of the ship:—



Particulars of fiddle, funnel and ventilator coamings, engine room skylight and other openings in machinery casing tops and their means of closing:—

Engine skylight, fiddle, funnel and vent coamings of strong steel construction ✓

fiddle openings fitted with hinged steel covers. ✓

Particulars of Flush Bunker Scuttles:—

None. ✓

Particulars of Companionways:—

None. ✓

Particulars of Ventilators in exposed positions on freeboard and superstructure decks:—

6 Lead Vents 24" diam. Coamings 33" x 40" to Holds and Tween decks. ✓  
 2 " 12" " " 33 x 34 to Crews quarters. ✓  
 2 " 12" " " 36 x 34 to Cargo Store. ✓  
 2 " 10" " " 33 x 32 to Tween decks. ✓  
 2 " 8" " " 33 x 30 to Steering GEAR. ✓

All Lead Vents closed by means of wood plugs and canvas covers. ✓

Particulars of Air Pipes in exposed positions on freeboard, raised quarter, or superstructure decks:—

All Air Pipes on freeboard deck 30" high to underside and in accordance with approved plan 31.3.42 ✓

Particulars of Gangway Cargo and Coaling Ports:—

None. ✓

Particulars of Scuppers and Sanitary Discharge Pipes:—

Discharges from houses on or above freeboard deck to Storm Valves in Tween decks. ✓  
 Scuppers from large Tween decks to bilges, self-closing covers fitted in Engine Room. ✓  
 Scuppers from Refrig Space and from Crews washbasins led to S.O.N.R. valves in holds and geared to freeboard deck. ✓  
 Discharges from Crews W.C.'s in Tween decks led to S.O.N.R. valves in Tween decks and geared to freeboard deck. ✓

Particulars of Side Scuttles:—

Sidelights strongly constructed and fitted with hinged deadlights. ✓

Vertical distance of Sill of lowest Side Scuttle above top of keel

31'-0" ✓

Particulars of Guard Rails:—

3'-6" high Steel bulwarks fitted fore and aft. ✓

Particulars of Gangways, Lifelines, etc.:—

One lifeline supplied Port and Starboard, of 3" manilla with fittings for same. ✓

Particulars of Freeing Arrangements.						
	Length of Bulwark	Height of Bulwark	Size of Freeing Ports	Number each side	Area each side	Rule area each side
FREEBOARD DECK.		3'-6" ✓	10'-0" x 9" 7'-0" x 9"	8 2	70.5'	
Forward Well						
State position of each freeing port ... (After Well:— ✓ (F. and A. position and height above deck edge) Forward Well:— 10" ✓						
State whether the freeing ports are fitted with shutters, bars, or rails, and give particulars of such:— 10 least openings. ✓						
Additional area where sheer is less than standard. ✓						



© 2021

Lloyd's Register  
Foundation

0065 1/2



PARTICULARS OF PROTECTION TO OPENINGS, ETC.

HATCHWAYS ON FREEBOARD AND SUPERSTRUCTURE DECKS.									
Description of Hatchway	1	2	3	4+5	STEERING GEAR.	FORW. PEAK. FORE.	ESCAPE HATCHES TO NOS 1-2-4 TWEEN DECKS.		
Dimensions of Hatchway	31'-6" x 22'-0"	44'-7 1/2" x 22'-0"	31'-6" x 22'	31'-6" x 22'	2'-6" x 2'-0"	3'-6" x 3'-0"	2'-6" x 2'-4"		
COAMINGS	Height above Deck	30 1/2	30 1/2	30 1/2	30 1/2	20	8	30"	
	Thickness	.50	.50	.50	.50	.35	.35	.44	
	Stiffeners	8 x 3 x 40	12 x 3 1/2 x 50	12 x 3 1/2 x 50	12 x 3 1/2 x 50				
	Brackets, Stays	2	4	2	2				
HATCH BEAMS	Number	5	8	6 1/2	5				
	Spacing	5-3	4-11 1/2	4-5 1/2	5-3				
	Scantling and Sketch	21 x 38	18 x 36	17 x 36	19 x 36				
	Bearing Surface	3 1/2	3 1/2	3 1/2	3 1/2				
FORE AND AFTERS	Number								
	Spacing								
	Unsupported Lengths								
	Scantling and Sketch								
HATCH COVERS	Material	W.P.	W.P.	W.P.	W.P.	W.T. Steel	W.T. Steel	O.P.	
	Thickness	2 1/8"	2 1/8"	2 1/8"	2 1/8"	Covers	Covers	2 1/8"	
	How fitted	7 x 2	7 x 2	7 x 2	7 x 2	Secured	Secured	7 x 2	
	Bearing Surface	3"	3"	3"	3"	by	by	3"	
Spacing of Cleats	24"	24"	24"	24"	Joggles.	Joggles.	20"		
Number of Tarpaulins	2	2	2	2			2.		
*Are wood fore and afters steel shod at all bearing surfaces? <input checked="" type="checkbox"/> Yes.									
Are battens and wedges efficient and in good condition? <input checked="" type="checkbox"/> Yes.									
Are tarpaulins in good condition and in accordance with rule requirements? <input checked="" type="checkbox"/> Yes. Tarpaulins new and to Rule requirements.									
Are lashings provided in accordance with rule requirements? <input checked="" type="checkbox"/> Yes.									

Particulars of any special features:—

This vessel has been built to scantlings as approved for a draught of 18" in excess of that permitted for a L.S.S. vessel having a tonnage opening. Locking bars fitted to all latches. Openings in tween decks closed by means of riveted closing plates. Owners request deeper loading endorsement. No 3 hatchway fitted with 5 shifting beams and 1 fixed beam. All Air Pipes of a Patent type, and are closed by means of a screwed flange, and are in accordance with Endorsement at first survey and at surveys for renewal of Certificate:—

The fittings and appliances are in accordance with the particulars shown on this form (or as now modified) and are in good condition.

approved plan 31-3-42.

