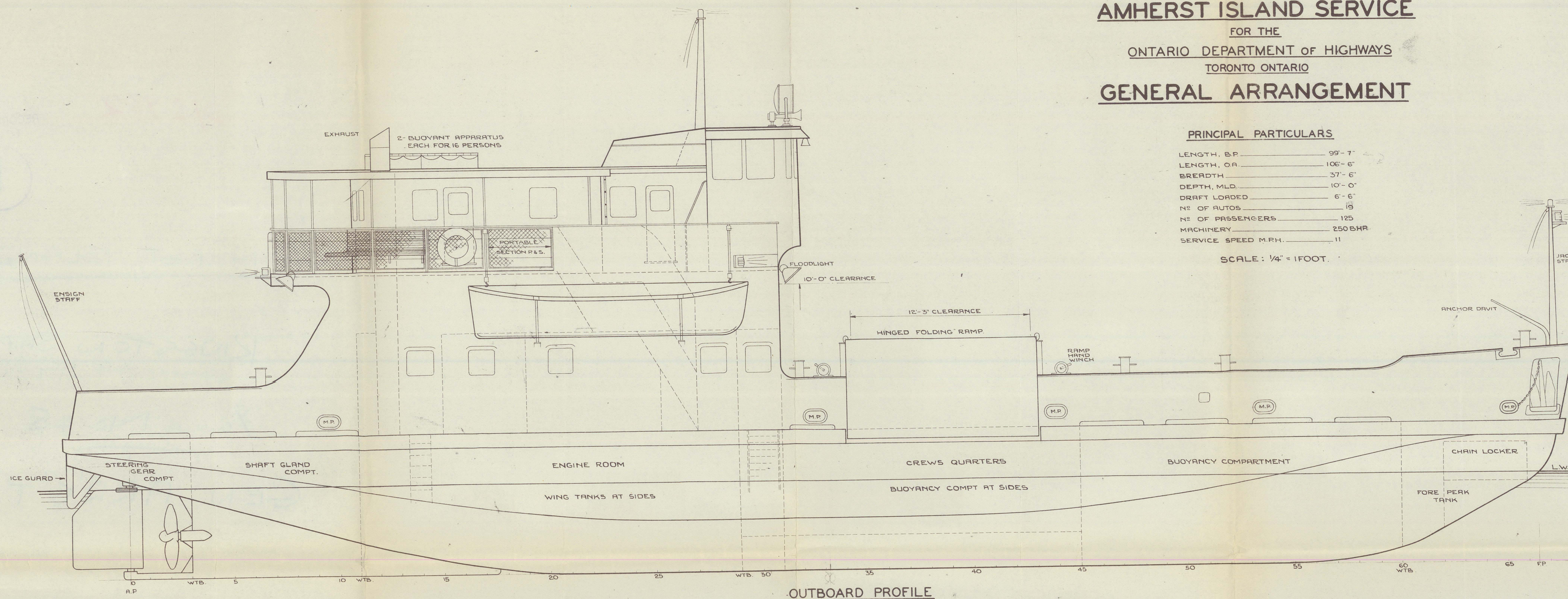


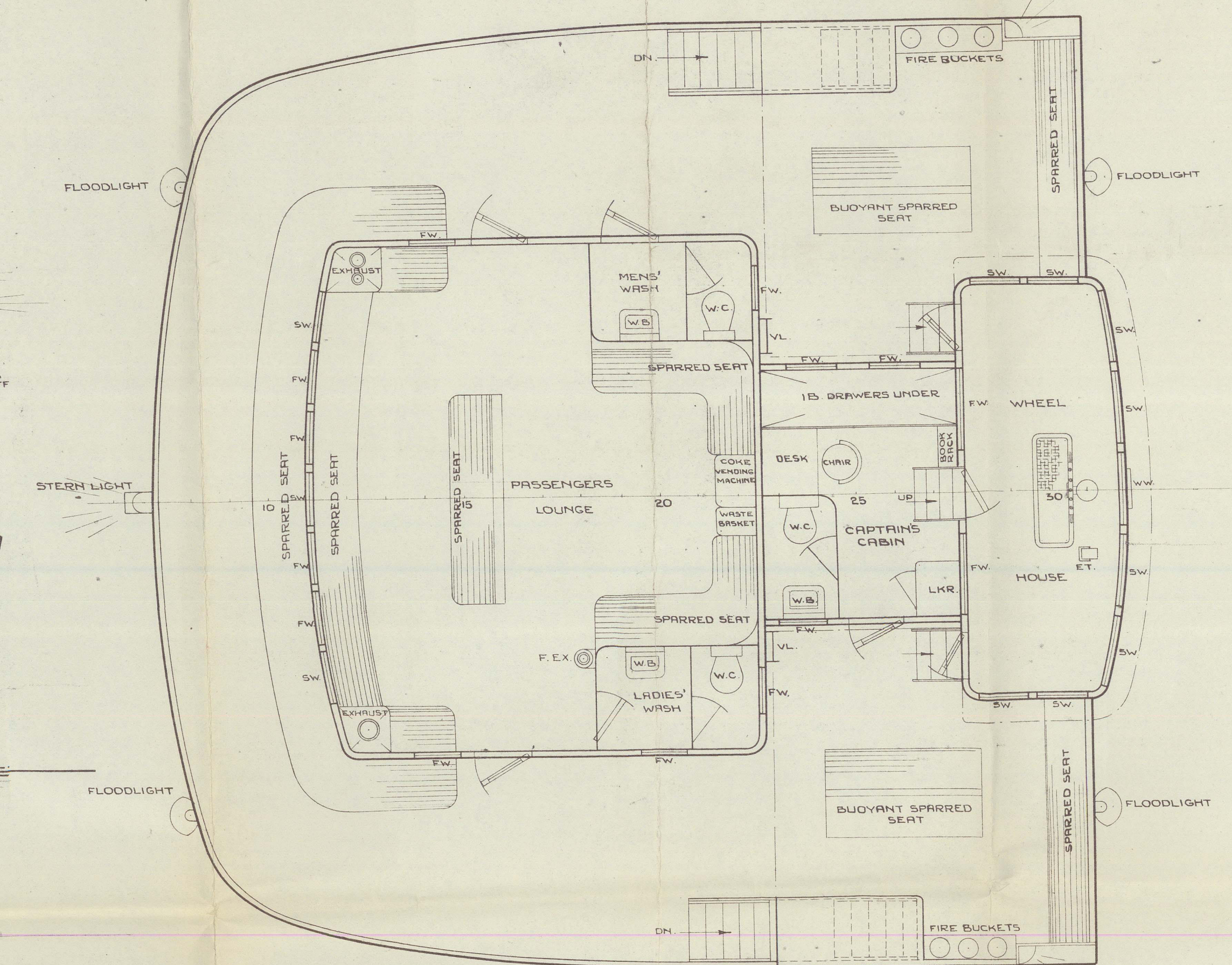
ELECTRICALLY WELDED DIESEL FERRY  
FOR  
AMHERST ISLAND SERVICE  
FOR THE  
ONTARIO DEPARTMENT OF HIGHWAYS  
TORONTO ONTARIO  
GENERAL ARRANGEMENT

LENGTH, BP	99'-7"
LENGTH, OA	106'-6"
BREADTH	37'-6"
DEPTH, MLD	10'-0"
DRAFT LOADED	6'-6"
Nº OF AUTOS	19
Nº OF PASSENGERS	125
MACHINERY	250 BHP
SERVICE SPEED M.P.H.	11

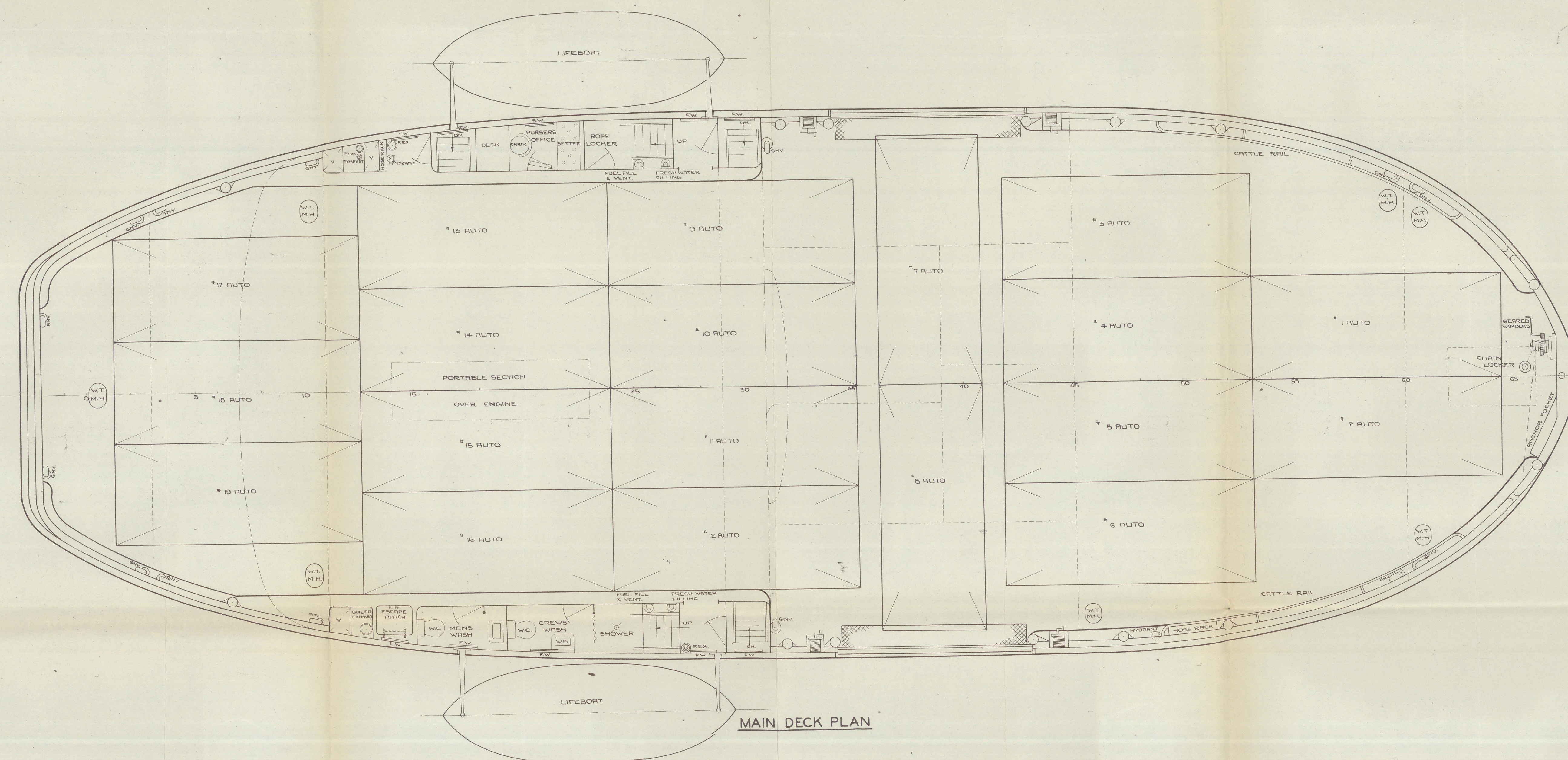
SCALE:  $\frac{1}{4}" = 1 \text{ FOOT}$ .



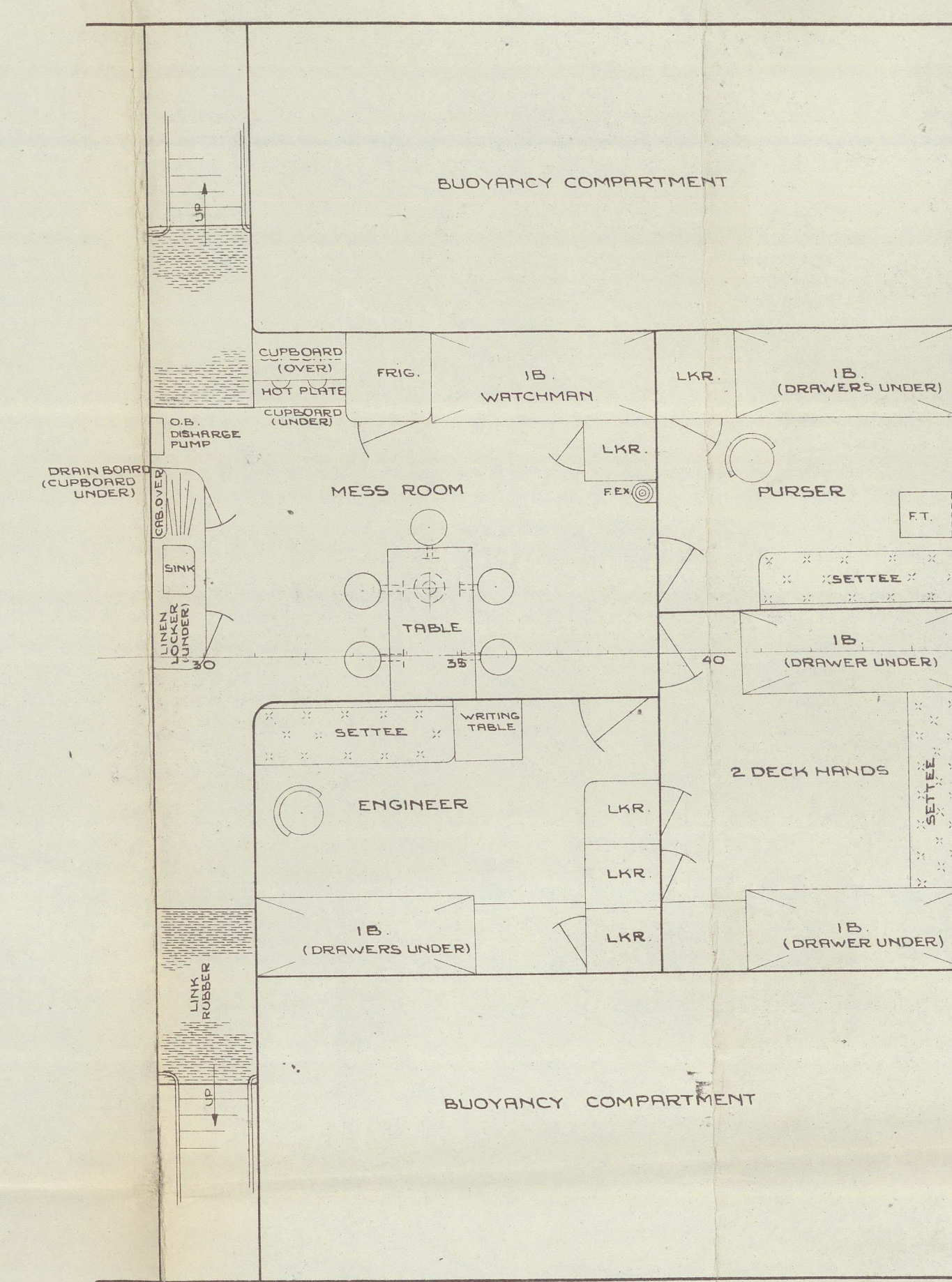
### OUTBOARD PROFILE



PROMENADE DECK



### MAIN DECK PLAN



LOWER DECK

ABBREVIATION

P.P. \_\_\_\_\_ BETTER PERPENDICULAR  
 I.B. \_\_\_\_\_ I BERTH  
 CAB. \_\_\_\_\_ CABINET  
 DN. \_\_\_\_\_ DOWN  
 E.T. \_\_\_\_\_ ENGINE TELEGRAPH  
 F.X. \_\_\_\_\_ FIRE EXTINGUISHER  
 FT. \_\_\_\_\_ FORWARD PERPENDICULAR  
 FRIG. \_\_\_\_\_ REFRIGERATOR  
 F. F. \_\_\_\_\_ FOLDING TABLE  
 F.W. \_\_\_\_\_ FIXED WINDOW  
 G.N.V. \_\_\_\_\_ GOOSENECK VENT  
 LMR. \_\_\_\_\_ LOCKER  
 L.W. \_\_\_\_\_ LOWD WATER LINE  
 H.R. \_\_\_\_\_ HOOKING PIPE  
 O.B. \_\_\_\_\_ OVERBOARD  
 S.W. \_\_\_\_\_ SLIDING WINDOW  
 V. \_\_\_\_\_ VENT  
 V.L. \_\_\_\_\_ VERTICAL LADDER  
 W.B. \_\_\_\_\_ WASH BASIN  
 W.C. \_\_\_\_\_ WATER CLOSET  
 W.T.B. \_\_\_\_\_ WATERTIGHT SUBWEARD  
 W.T.P.H. \_\_\_\_\_ WATERTIGHT MANHOLE  
 W.W. \_\_\_\_\_ WINDSHIELD WIPER

LLAYD'S.

THE COLLINGWOOD SHIPYARD  
LIMITED

No. 65165

Date 23-12-54

COLLINGWOOD • ONT. *Wm*

DESIGN № 853

MILNE, GILMORE & GERMAN  
NAVAL ARCHITECTS  
MONTREAL, QUE.

I. REVISED

13/10/54

AS AT JULY 23, 1954.

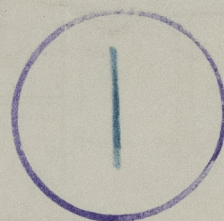
AS AT JULY 23, 1954.

Lloyd's R



D/S 752

RECORDS DEPT.  
LONDON.



AMHERST ISLANDER

KINGSTON SHIPYARD  
(Canadian Motor Ferry S/S)

Yard No. 48.

GEN

ARRGT



© 2021

Lloyd's Register  
Foundation

010545-010553-0182