

Rpt. C.11.

LLOYD'S REGISTER OF SHIPPING

Index No. 5913

(For London Office only.)

UNITED WITH THE BRITISH CORPORATION REGISTER

SURVEYS FOR FREEBOARD.

(CONDITIONS OF ASSIGNMENT.)

Ship's Name "MOBIL BRILLIANT"

Port of Survey PALERMO.

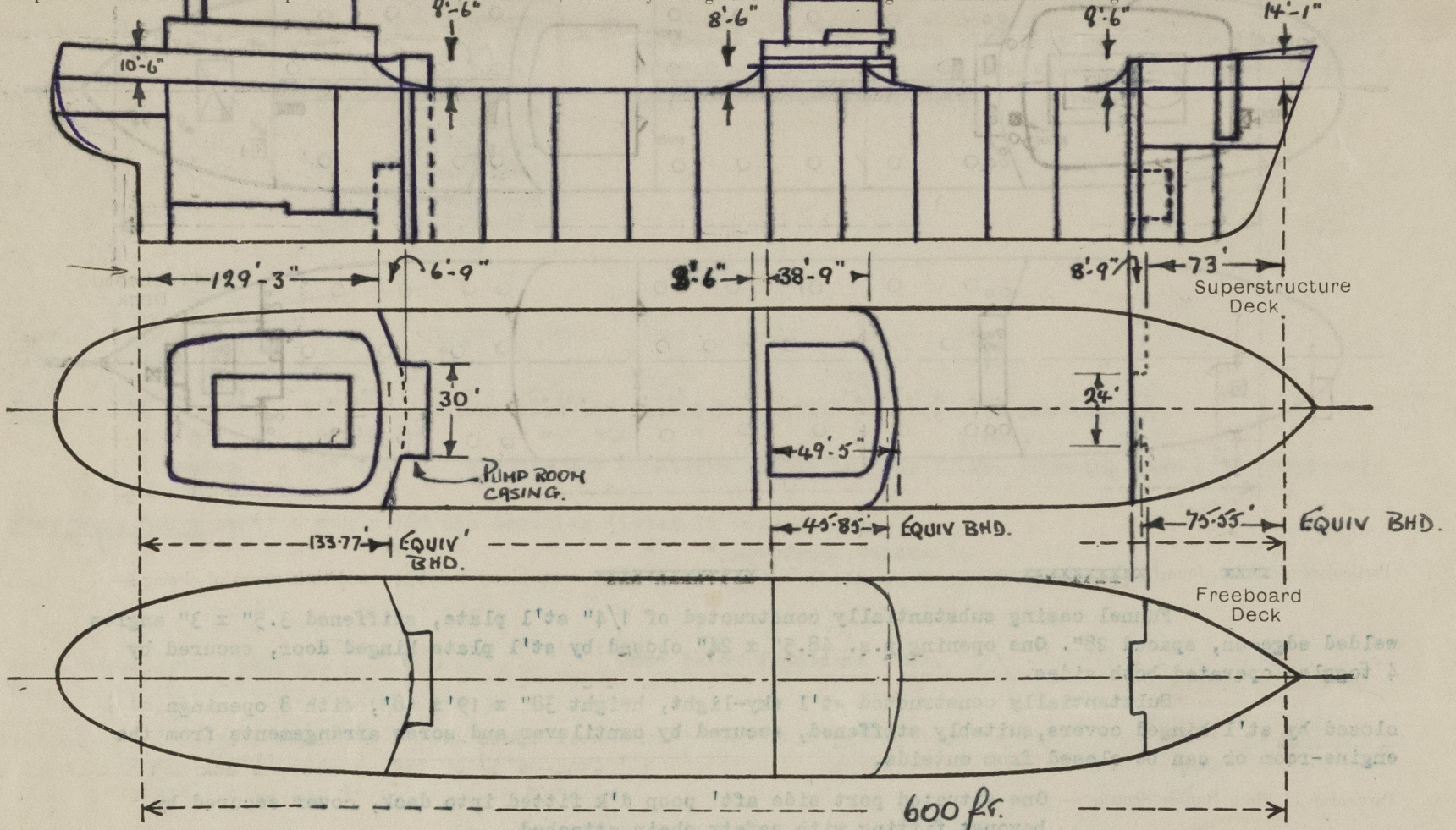
Official Number 2445 - 50

Surveyor's Signature P.H.W. Evans.

Nationality and Port of Registry PANAMANIAN. PANAMA.

Date of Survey 31st March, 3rd April, 4th & 9th April, 1956.

Disposition and dimensions of superstructures, trunks, deckhouses, machinery casings and wood sheathing to be inserted in the diagrams and tabular statement :-



Particulars of Superstructures, Trunks, Casings, Deckhouses.

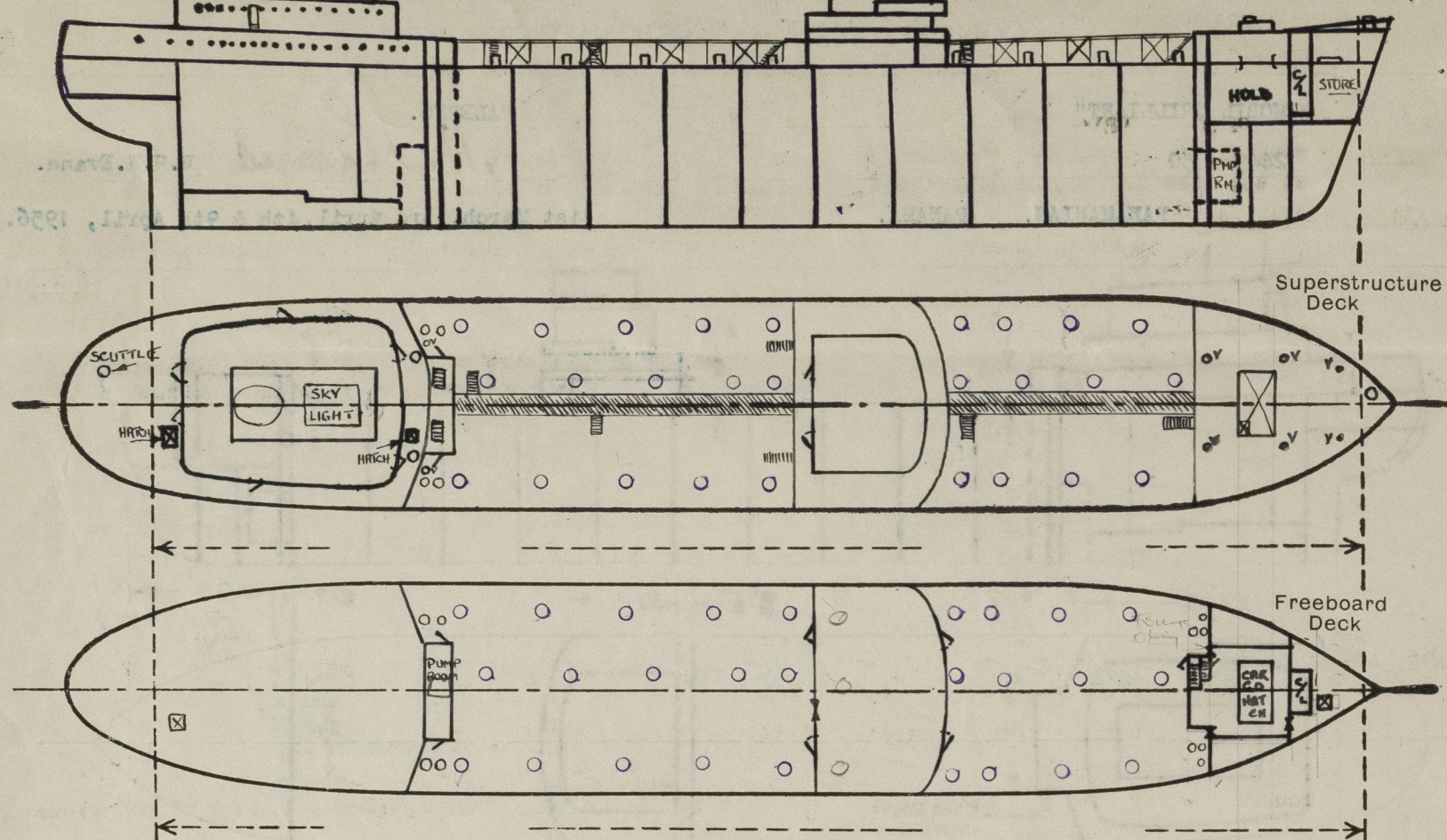
	Coaming	Plating	Stiffeners	Spacing	End Attachments of Stiffeners	Size of Openings	Height of Sills	Height Beam to Beam
Poop Bulkhead	-	7/16"	11"x4.5"x 1/2"	30"	Welded & bkt at top, W bot	nil	-	8'-6"
Raised Quarter Deck Bulkhead	-	-	-	-	-	-	-	-
Bridge, After Bulkhead	-	5/16"	4"x3"x 1/4"	30"	Top welded to beams. Bot's snapped	P&S 60"x28" S 61"x49"	18.5"	8'-6"
Bridge, Forward Bulkhead	-	3/8"	11"x4.5"x3/8"	30"	Welded to deck top & bottom	P&S 28"x60"	18.5"	8'-6"
Forecastle Bulkhead	-	5/16"	3.5"x2.5"x1/4"	30"	Snapped top & bottom.	P&S 48"x38" P&S 28"x60"	24"	8'-6"
For'd secondary bulkhead	-	3/8"	6"x4"x3/8"	30"	Welded to deck top & bottom.	P. 63"x28" S. 62"x50"	15.5"	8'-6"
Trunk, Forward	-	-	-	-	-	-	-	-
Exposed Machinery Casings on Freeboard or Raised Quarter Decks	-	-	-	-	-	-	-	-
Exposed Machinery Casings on Superstructure Decks (Boat deck)	-	5/16"	4"x3"x3/8"	36"	Alternate stiff's b'kts top	60"x28"	16.5"	11'-5"
Machinery Casings within Superstructures	Main D'k 5/8"	5/16"	"	28"	"	66"x28"	13.5"	-
Apertures	Poop D'k -	"	"	"	"	"	15"	-
Aft Pump Room Entrances	-	3/8"	11"x4.5"x1/2"	30"	Welded to deck at bott'm. Welded & b'ktd to d'k at top	28"x60"	24"	8'-6"

Particulars of Closing Appliances (state if capable of being manipulated from both sides).

Poop Bulkhead	No openings.
Poop deck house	Substantially constructed st'l deck house enclosing E.R. casing, closed by st'l w.t. doors covering P openings 60"x26", sills 16", doors secured 6 toggles operated both sides.
Bridge, After Bulkhead	P & S openings closed by hinged st'l w.t. doors operated both sides, secured 6 toggles. S opening closed rect' st'l plate diag' stiffened, secured by 14 hook bolts.
Bridge, Forward Bulkhead	P & S closed by hinged st'l w.t.; doors, secured 6 toggles, operated both sides.
Forecastle Bulkhead	P & S openings closed rect' st'l plates, diag' stiffened, secured by hook bolts.
Exposed Machinery Casings on Freeboard or Raised Quarter Decks	P & S openings closed hinged st'l w.t. doors, secured 6 toggles, operated both sides.
Exposed Machinery Casings on Superstructure Decks (Boat deck)	For'd bulkhead: P.s hinged st'l door, secured by lock operated both sides. S.s rect' st'l plate, diag' stiffened, secured hook bolts.
Machinery Casings within Superstructures	Port opening 60"x28", fitted hinged st'l w.t.; door, secured 6 toggles, operated both sides.
Apertures	P & S openings, closed hinged st'l ordinary plate doors, operated both sides, situated poop d'k level.
Aft Pump Room Entrances	2P&2S openings " " " " " " " " situated main d'k level.

PARTICULARS OF PROTECTION TO OPENINGS, ETC.

The following diagrams should be used to indicate the positions of cargo hatchways, gangways, side scuttles, scuppers, ventilators, companionways, etc., which would affect the seaworthiness of the ship :-



Particulars of funnels, funnel coamings, engine room skylight and other openings in machinery casing tops and their means of closing :-

Funnel casing substantially constructed of 1/4" st'l plate, stiffened 3.5" x 3" angles welded edge-on, spaced 28". One opening p.s. 48.5" x 24" closed by st'l plate hinged door, secured by 4 toggles operated both sides.

Substantially constructed st'l sky-light, height 38" x 19" x 18", with 8 openings closed by st'l hinged covers, suitably stiffened, secured by cantilever and screw arrangements from the engine-room or can be closed from outside.

Particulars of Flush Bunker Scuttles :- One situated port side aft' poop d'k fitted into deck, cover secured by bayonet fitting with safety chain attached.

Particulars of Companionways :- **POOP DECK :-** Two steel companionways situated at for'd end of Engineers alleyway (including those incorporated in deckhouses and masthouses) p & s, leading down to the main deck. Also one (p.s.a.) from crew quarters to main deck. All the above are closed by accommodation casing. The openings to same (8) closed by steel water-tight doors. (16" COAMINGS IN FORD END & 15" ELSEWHERE)

MAIN DECK :- One steel companionway to for'd cargo hold and one to the for'd pumproom, contained within the foc's'le space. Two steel companionways to aft' pumproom, enclosed in pumproom casing. One steel companionway to steering flat from main deck, closed with water tight doors.

Particulars of Ventilators in exposed positions on freeboard and superstructure decks :-

FOC'S'LE DECK :- 2 - 12 3/4" dia', ht of coaming 36", to p & s foc'sle space. } - All coamings fitted with hinged
2 - 24" " " " 39", to cargo hold for'd. } steel covers secured with toggle
2 - 12" " " " 39", to cargo hold aft. } screws.
2 - 26" " " " sampson post vent's to pumproom space.
2 - 26" " " " sampson post vent's to pumproom space aft fitted with dampers.

POOP DECK :- Note / Accommodation and machinery space ventilation is forced circulation with air intakes situated in the side casing of the Eng-room, on the poop-beat deck. Can be closed from outside.

HEIGHT OF AIR INTAKES ABOVE DECK - 8'-0"

Particulars of Air Pipes in exposed positions on freeboard, raised quarter, or superstructure decks :-

FOC'S'LE DECK :- 1 - 6.75" dia, height 38" from the fore peak tank.

2 - 3.5" " " 42" from p & s of No. 1 deep O.F. tanks.

MAIN DECK :- 2 - 7.75" " " 36" from p & s of No. 2 " " "

2 - 7.75" " " 36" from p & s of ford cofferdam.

2 - 3.5" " " 36" from p & s hatches of No. 2 deep bunker tanks.

2 - 3.5" " " 36" from p & s hatches of ford cofferdams

2 - 3.53" " " 36" from p & s of aft cofferdam.

2 - 6.75" " " 76" from p & s of aft wing bunker tanks.

2 - 6.75" " " 76" from p & s of Eng-room settling tanks.

1 - 3" " " 34" from the aft peak tank.

All the above air pipes fitted with goosnecks and bell mouth, gauzes, and closed by metal ball contained in bell mouths.

Particulars of Gangway Cargo and Coaling Ports :-

- N I L -

Particulars of Scuppers and Sanitary Discharge Pipes :-

Scuppers :- Scupper pipes draining the main deck, 5.75" dia' (heavy guage) - 8 p & s, passing through deck stringer at the side and discharging through opening in the sheer-strake.

Sanitary Discharges :- Lower bridge space / 1 p & s 6.75" dia' G.M. non-return storm valve, discharging through opening in side plating, above freeboard deck, from Officer's accommodation toilets, etc.

Engine room :-

P & S 1 - 4.5" dia

1 - 6.75" dia

1 - 4.5" dia

S.s 2 - 6.5" dia

1 - 4.5" dia

P.s 2 - 4.5" dia

2 - 6.5" dia

P.s 1 - 4.5" dia

1 - 6.5" dia

S.s 1 - 4.5" dia

Discharging through ships side plating below freeboard deck, through screwed down non-return valves, from Officer's and crew accommodation in poop.

Particulars of Side Scuttles & Deadlights :-

Poop :- 26 p & 24 s - 16" dia G.M. scuttles and deadlights fitted in poop side plating.
1 p & 1 s - 16" dia " " " " " front.
1 centre - 12" dia " scuttle and deadlight fitted in poop front. (opening into aft' pooproom).

Poop Deck House :- 17 - p & s 16" dia scuttles fitted in side plating.

5 - 16" " " " " after end bulkhead.

2 - 16" " " " and deadlights fitted in ford end plating.

Vertical distance of Sill of lowest Side Scuttle above top of keel. None below freeboard deck.

Distance from amidships to centre of lowest Side Scuttle.

Particulars of Guard Rails & Bulwarks :- **BRIDGE :-** Sides and ends protected by strongly constructed bulwarks.

MAIN DECK :- (Aft) :- 2 tier guard rails 43" high in stanchions 69" apart extending from poop to bridge apron plate at P & S sides.

(ford) :- 2 tier guard rails 43" high in stanchions 64" apart extending from bridge side to foc'sle side.

FOC'S'LE D'K :- End and 2/3 sides of foc'sle deck protected by 2 tier guard rails 43" high in stanchions 68" apart, remainder protected by strongly constructed bulwarks.

POOP :- 2 tier guard rails 43" high in stanchions 60" apart at sides and ford end.

Particulars of Gangways, Lifelines, etc. :-

Gangway through centre of vessel, constructed of steel, passing from foc'sle deck the bridge house and from bridge house to poop, with access ladders at sides led down to freeboard deck, protected by stanchions 64" apart, height 43" with two tier chains stretched in between port and starb' side.

(SEE SKETCH OVERLEAF)

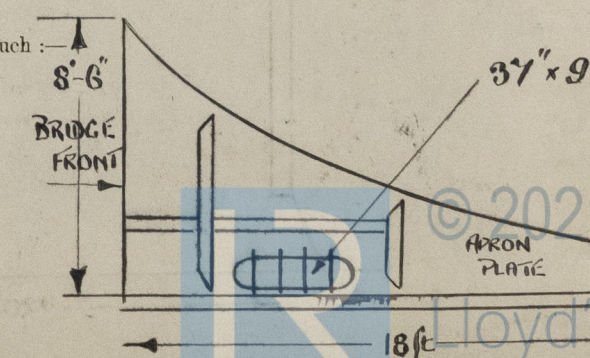
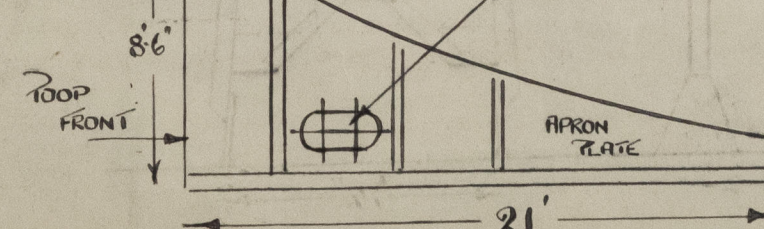
Particulars of Freeing Arrangements.

	Length of Bulwark	Height of Bulwark	Size of Freeing Ports	Number each side	Area each side	Rule area each side
After Well ...						
Forward Well ...						

State position of each freeing port ... (F. and A. position and height above deck edge)

State whether the freeing ports are fitted with shutters, bars, or rails, and give particulars of such :-

Additional area where sheer is less than standard. 2 1/2" x 16"



PARTICULARS OF PROTECTION TO OPENINGS, ETC.

HATCHWAYS ON FREEBOARD AND SUPERSTRUCTURE DECKS.											
+-----FREEBOARD DECK-----+FOCSLE D'K- POOP DECK FOCSSLE D'K											
Description of Hatchway	30 cargo hatches	Two P&S fore & aft deep to file	3P&S to Bunker t'ks	Small hatch to file store hold	Hatch to ford hold	Hatch to CO ₂ r'm	Hatch to store	Hatch to focsle space	Hatch to ..
Dimensions of Hatchway	49" dia	22.5" dia	31" dia	48"x48"	120x240"	120x240"	37"x37"	50"x42"	32" dia
COAMINGS	Height above Deck	...	32"	23"	32"	9.5"	10"	25"	25"	25"	32.5"
	Thickness	{ Sides	1 1/2"	1 1/2"	1 1/2"	3/8"	1 1/2"	1 1/2"	3/8"	3/8"	1 1/2"
	Stiffeners	{ Ends	-	-	-	-	-	-	-	-	-
	Brackets	{ Sides	-	-	-	-	-	-	-	-	-
HATCH BEAMS	Number	...	-	-	-	-	-	-	-	-	-
	Spacing	...	-	-	-	-	-	-	-	-	-
	Scantling and Sketch	...	-	-	-	-	-	-	-	-	-
	Bearing Surface	...	-	-	-	-	-	-	-	-	-
POOP AND AFTER	Number	...	-	-	-	-	-	-	-	-	-
	Spacing	...	-	-	-	-	-	-	-	-	-
	Unsupported Lengths	...	-	-	-	-	-	-	-	-	-
	Scantling and Sketch	...	-	-	-	-	-	-	-	-	-
HATCH COVERS	Material	...	Steel	Steel	Steel	Steel	Steel	Steel	Steel	Steel	Steel
	Thickness	...	1 1/2"	1 1/2"	1 1/2"	5/16"	3.1/2"	1 1/2"	3/8"	3/8"	1 1/2"
	How fitted	...	Hinged	Hinged	Hinged	Hinged	Hinged	Hinged	Hinged	Hinged	Hinged
	Bearing Surface	...	W.T.	W.T.	W.T.	W.T.	W.T.	W.T.	W.T.	W.T.	W.T.
Spacing of Cleats	-	-	-	-	-	-	-	-	-
Number of Tarpaulins	-	-	-	-	-	-	-	-	-
*Are wood fore and afters steel shod at all bearing surfaces? Yes. Are battens and wedges efficient and in good condition? Yes. Are tarpaulins in good condition and in accordance with rule requirements? Yes. Are lashings provided in accordance with rule requirements? - Are wood covers fitted with galvanised end bands? -											

Particulars of any special features :- (Timber Deck-cargo Fittings, Skylights, Sewage Systems, Ash Ejectors, Rubbish Shoots, etc.)

CARGO HOLD :- For'd cargo hold hatch, on freeboard deck - in focsle space closed by class 2 closing arrangements, fitted with patent hollow steel hatch covers 10' long of 3/16" thick material and not supported by a beam.

Aft PUMP ROOM :- After pomproom skylights P & S, coaming 60" x 99" x 18" height, fitted with substantially constructed steel flanged covers, hinged and diag' stiffened.

POOP DECK BUNKER HATCHES :- 1 P & 1 S situated on for'd poop deck, dia 32" x 32" ht x 1/2" thick constructed of steel, closed by hinged steel cover W.T. secured by strong back and locking screw. Cover also fitted with ullage cap.

Butterworth openings :- In main deck 12.5" dia, fitted with brass covers, secured studs and nuts - 4 covers & openings in each centre tank and 2 to each wing tank.

Cargo Tank air pipes :- Fitted into each hatch coamings 6.5" dia led manifold on catwalk and thence to discharge pipes on sampson posts.

Cargo Tank Hatch Covers :- Fitted with 10" dia ullage caps.

PARTICULARS OF CATWALK.

