

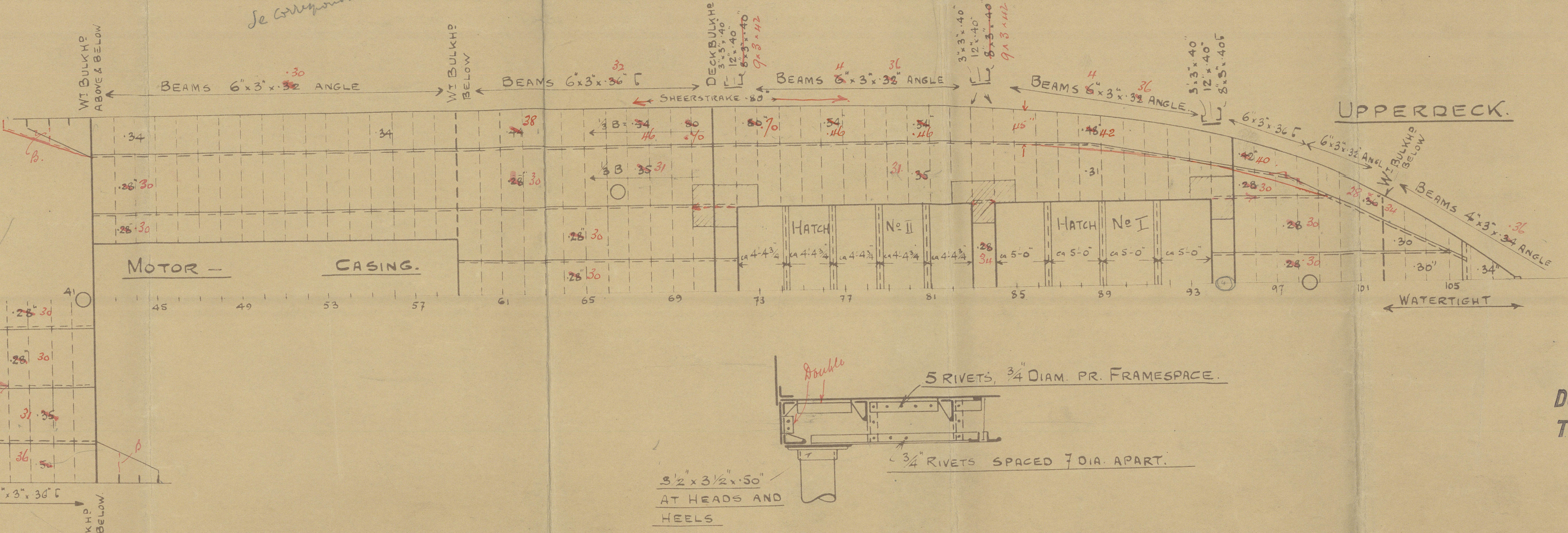
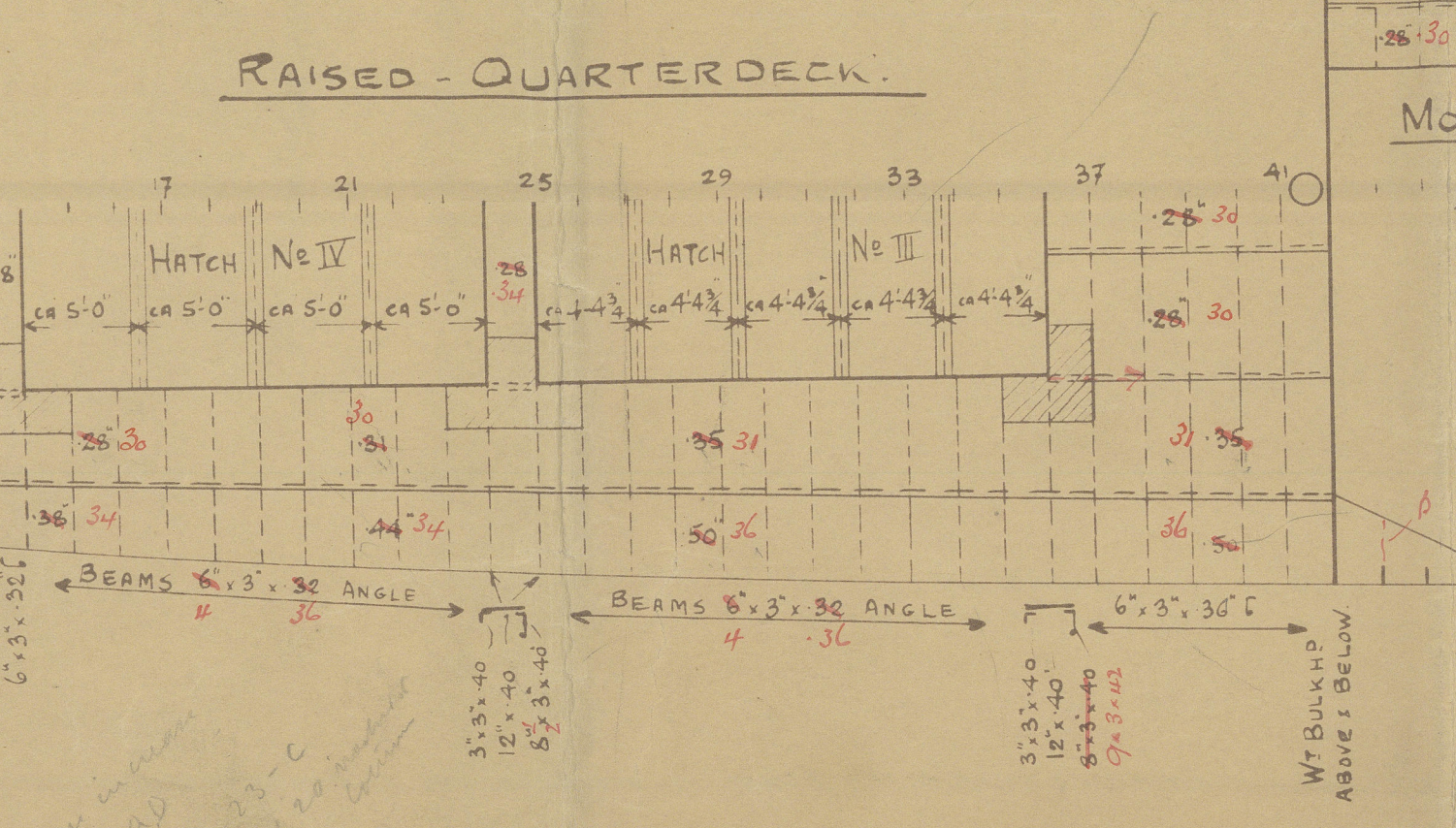
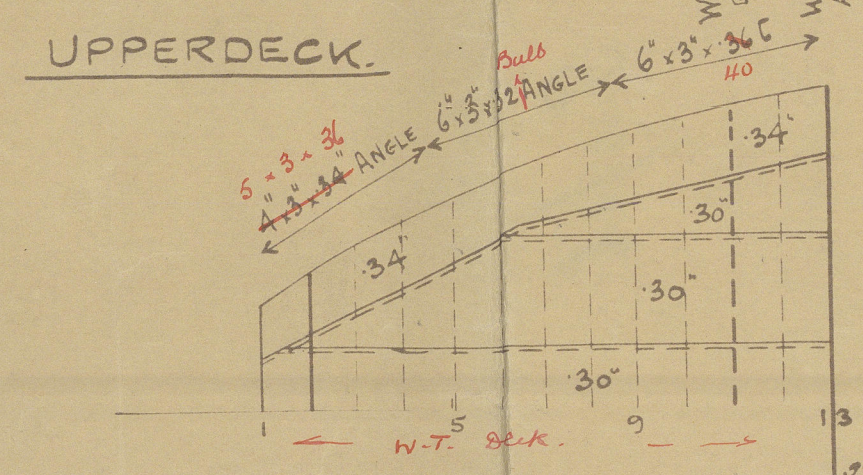
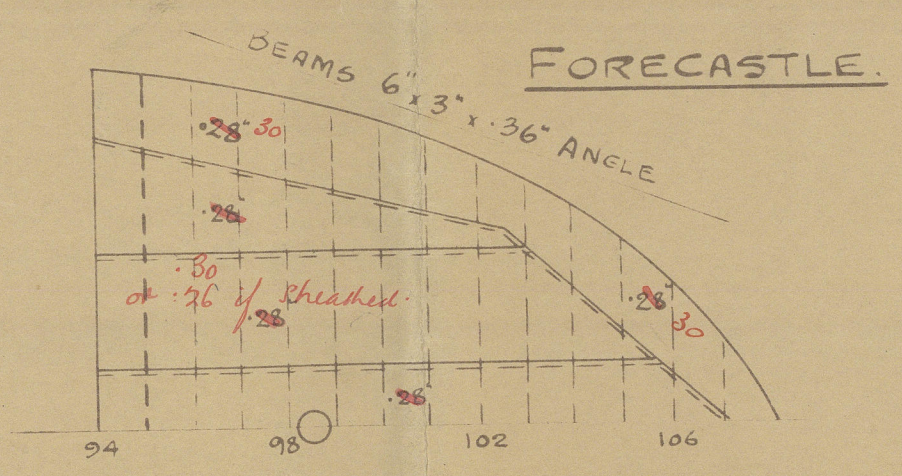
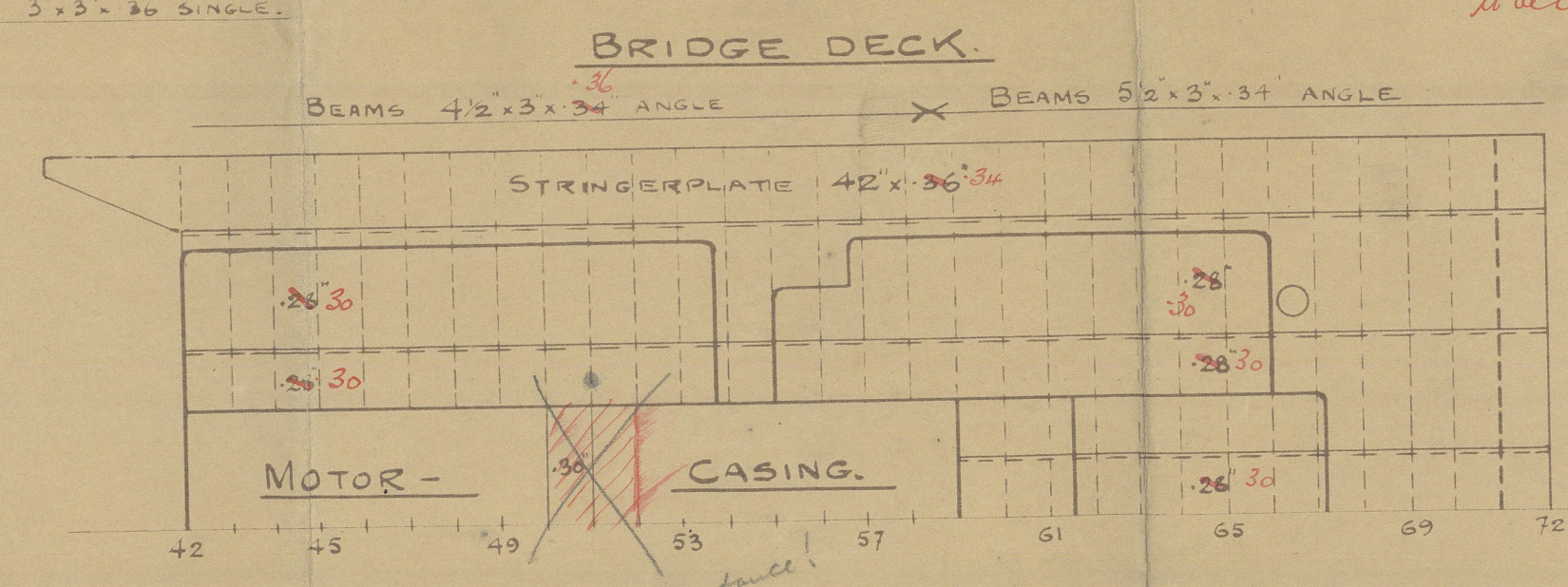
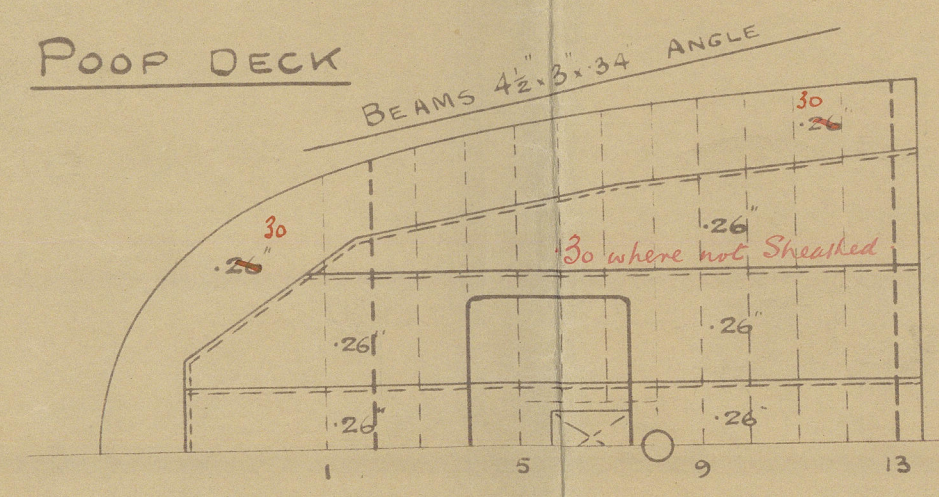
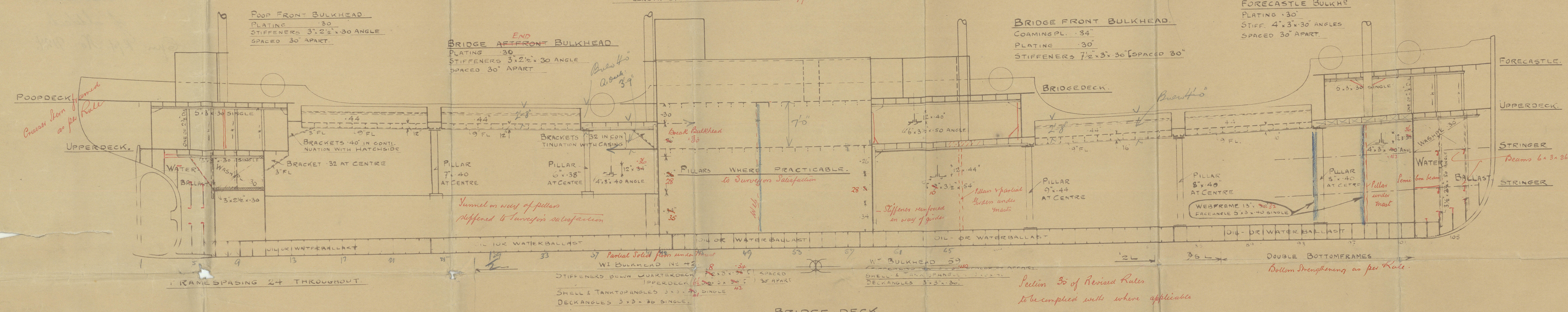
2/6/24

PROFILE.

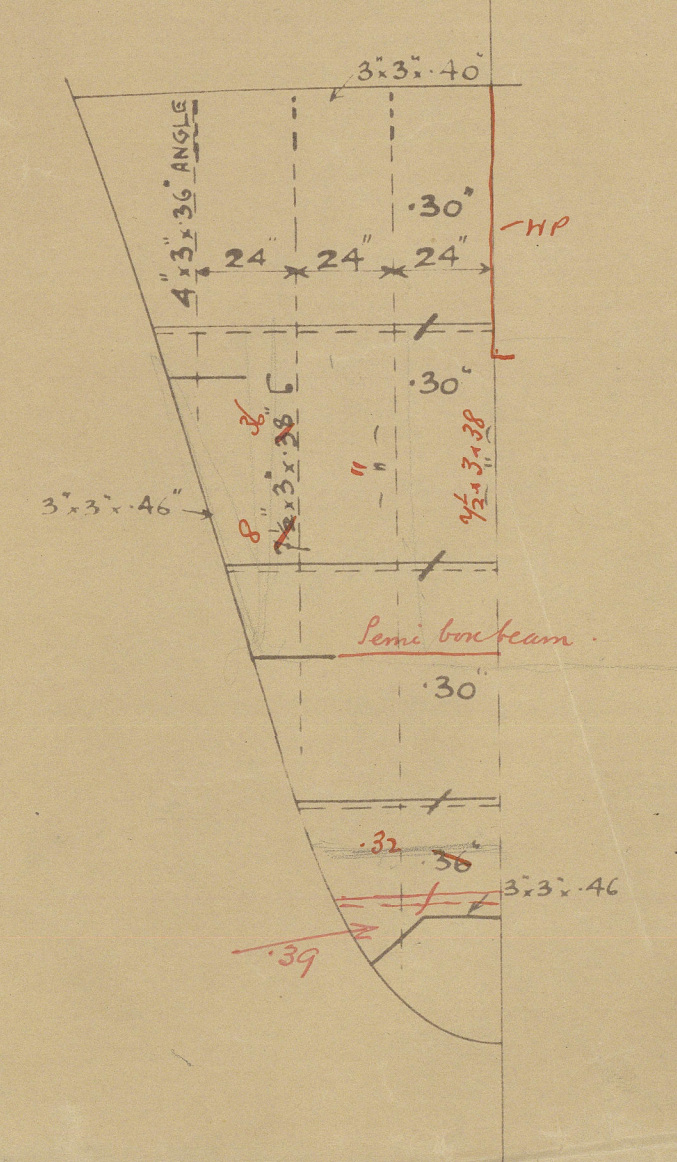
SCALE 1/8" = 1'-0"

LENGTH BETWEEN PP 215'-0"
BREADTH MOULDED 34'-0"
DEPTH 15'-6"
POOP 24'-6" - BRIDGE 58'-0" - FORECASTLE 26'-6"
TO BE BUILT TO LLOYD'S REGISTER OF SHIPPING CLASS 100 A1
WITH SUPERSTRUCTURES: FORECASTLE & COMBINED BRIDGE QUARTERDECK & POOP.
DOUBLE BOTTOM ARRANGED TO CARRY OILFUEL OF FLASHPOINT ABOVE 150° FAHR.
L.O. = 3333 = 1 LONGITUDINAL NUMBER.
 $L \cdot (D+B) = 10643 = 11$ " " " "
 $D_a = 11.15$, $D_u = 13.85$, $D_o = 9.6$.
 d FOR UPPER DECK = 12'-4"
 d QUARTERDECK = 16'-1"
POOP + BRIDGE + FORECASTLE 506' = .775 V
LENGTH OF SHIP

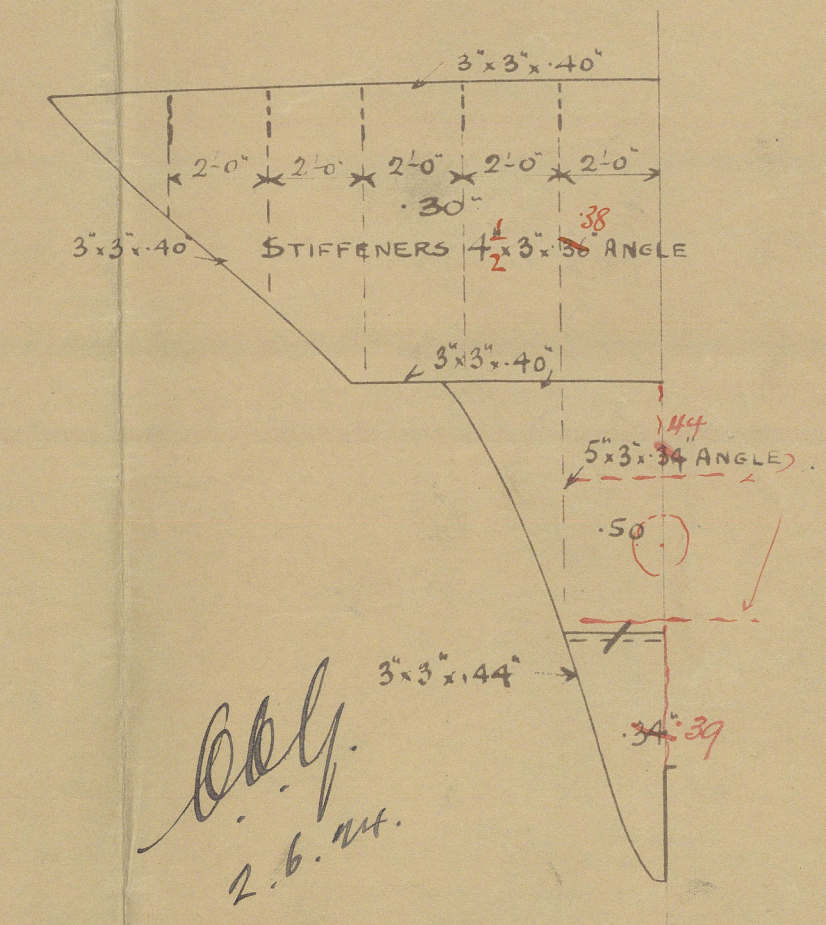
PILLAR TUBES MADE OF LAPWELDED STEEL HAVING A TENSILE STRENGTH OF NOT LESS THAN 28-32 TONS PR SQ INCH WITH AN ELONGATION OF NOT LESS THAN 20% IN A LENGTH OF 8 INCHES DIAMETRE GIVEN OUTSIDE.



WT BULKHEAD FRAME 102.



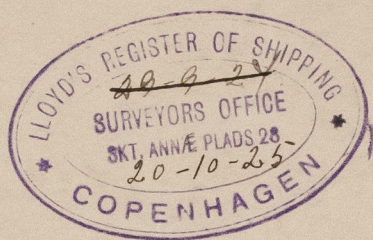
WT BULKHEAD FRAME 7 & 11.



Denne Tegning maa ikke fremvises til Trediemand og maa ikke kopieres.
AKTIESELSKABET BURMEISTER & WAIN
MASKIN- OG SKIBSBYGGEM
KØBENHAVN
2.6.24.

PROJ. 2624
12514
23-V-24
1/8" = 1'-0"
PROFILE.

Prendborg Skibsverft og Maskinbyggeri No 31.
{ Verbuidning No 318 }
{ Overmeister & Wain's }
(Maskin & Skibsbyggeri)
Profile



S/S. "Molera"
of Adelaide.
Cpn. Rpt. No. 7124.

47
11
28



© 2021

Lloyd's Register
Foundation

010519-010525-0034