

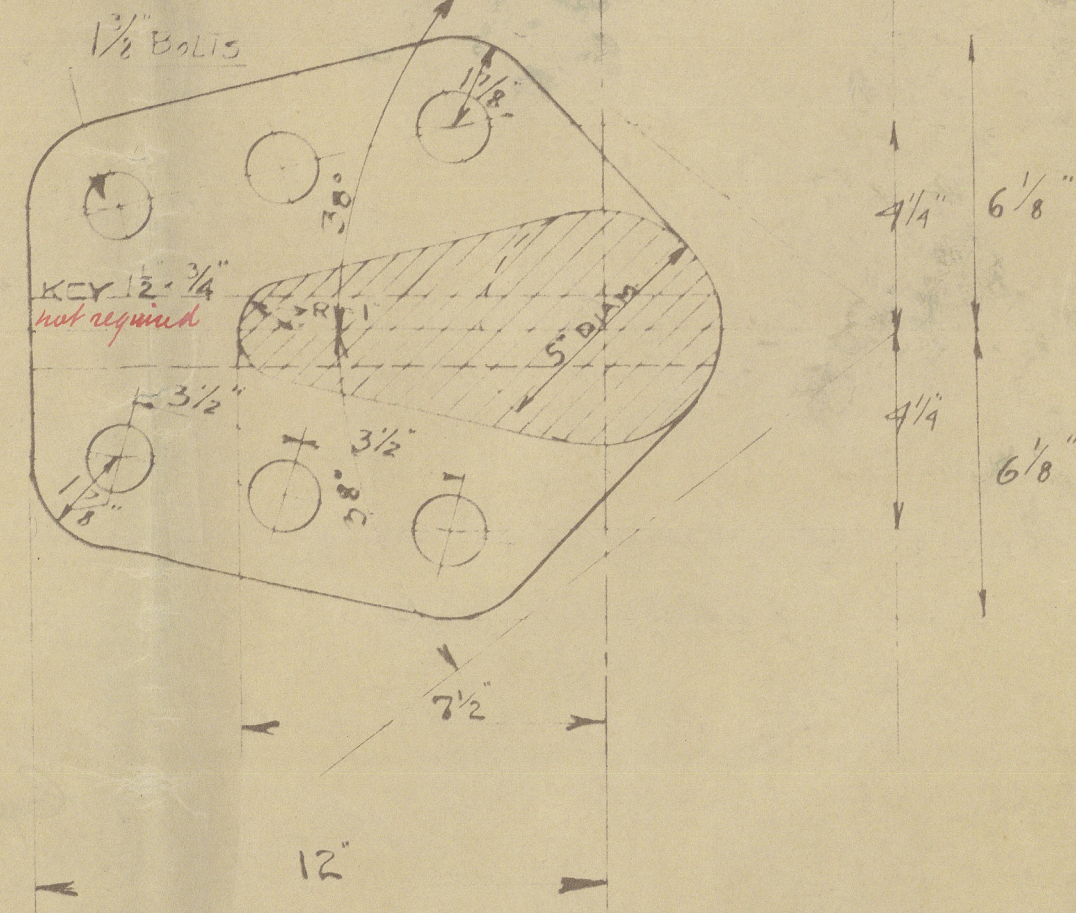
BYCNINC No 318

RUDDER & STERNPOST

SCALE $3\frac{3}{4}'' = 1'-0''$

NOTE STERNPOST OF CAST STEEL
 RUDDERHEAD AND MAIN PIECE OF FORGED
 STEEL WITH FORGED OR CAST STEEL ARMS
 SHRUNK ON AND KEYED TO MAIN PIECE
 STEEL PINTLES WITH CAST STEEL BUSHES
 FITTED COMPLETE AS SHOWN. RIVET
 HOLES TO BE CAREFULLY MARKED AND
 BORED SPACING AND DIAMETERS ACCORDING
 TO THIS PLAN.

DETAIL OF COUPLING
 SCALE $3'' = 1 \text{ FOOT}$

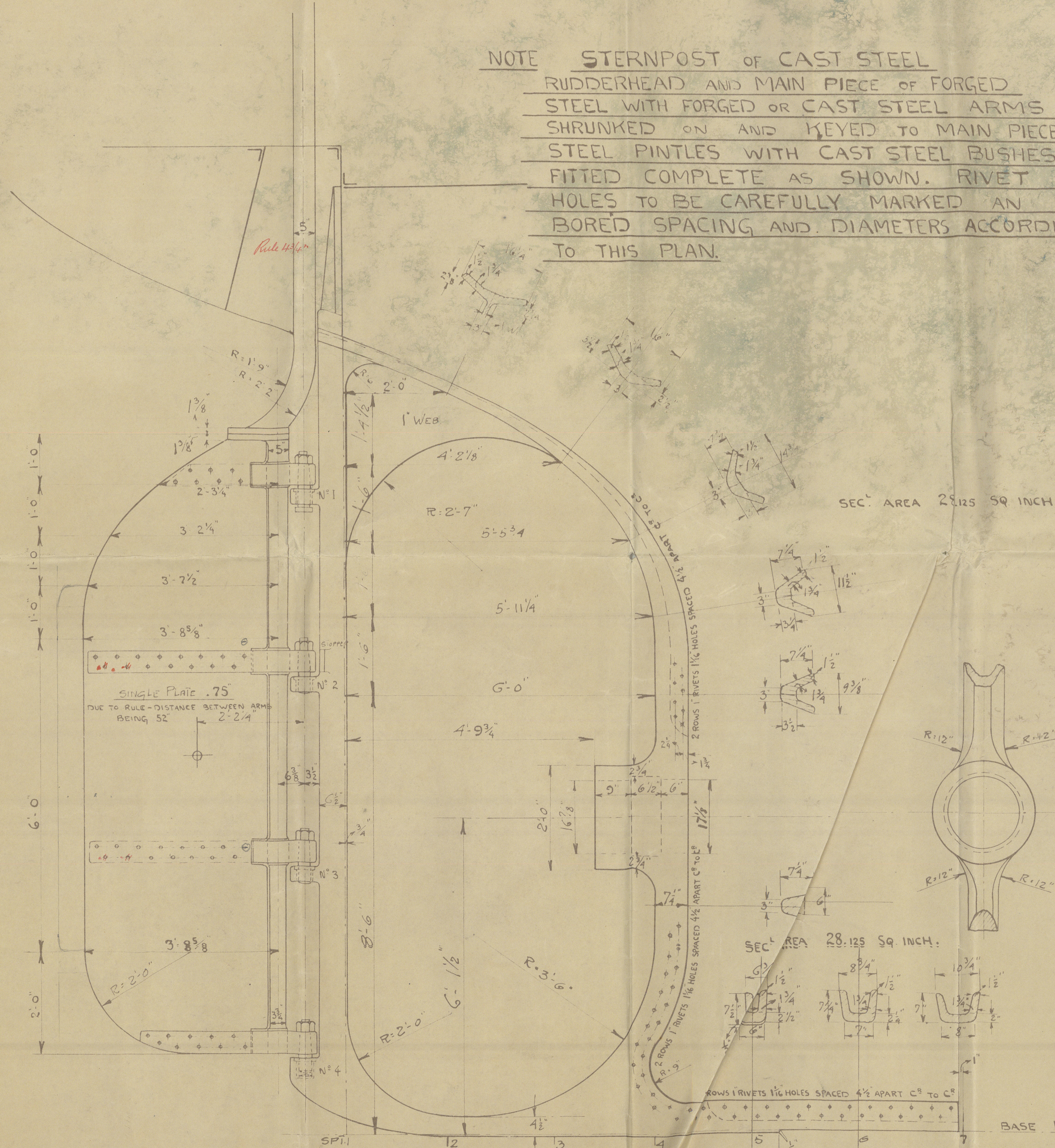


COUSE ARMS OF FORGED STEEL
 TO BE KEYED & SHRUNK ON
 RUDDER STOCK

ARMS UNIFORMLY TAPERED
 FROM 5.3 AT RUDDER STOCK
 TO 5.1

RIVETS IN ARMS TO BE $1\frac{1}{8}''$ DIAM
 SPACED 5' APART C⁸ TO C⁹
 HOLES DRILLED $1\frac{1}{8}''$ DIAM &
 COUNTERSUNK IN ARMS & PLATE

AREA OF RUDDER = 43.1 SQ FEET
 CENTER OF GRAVITY ABAFT $E = 2'-2\frac{1}{4}''$
 SPEED OF VESSEL = 10 KNOTS.
 $A \times D = 93.95$

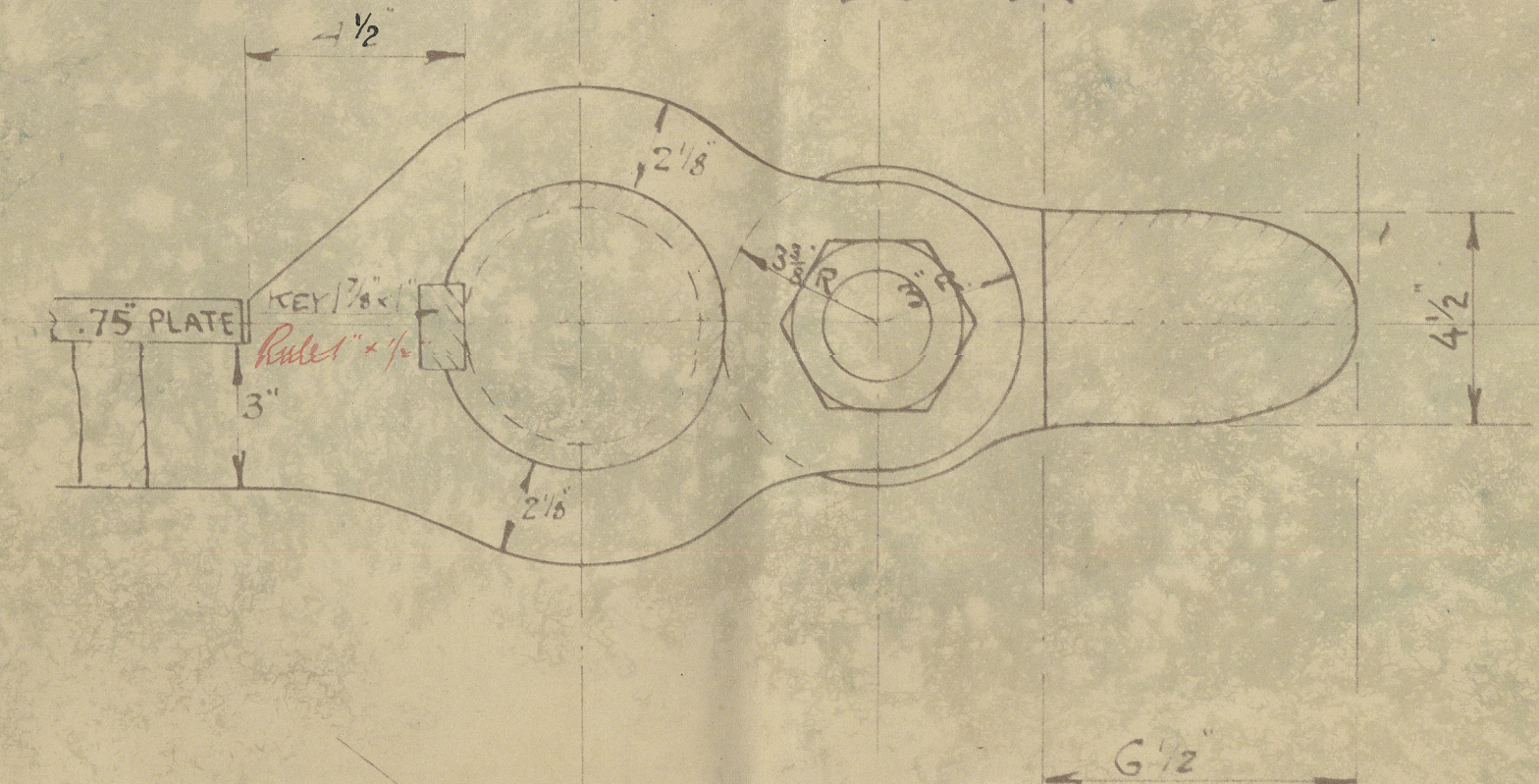


SEC. AREA 28.125 SQ INCH.

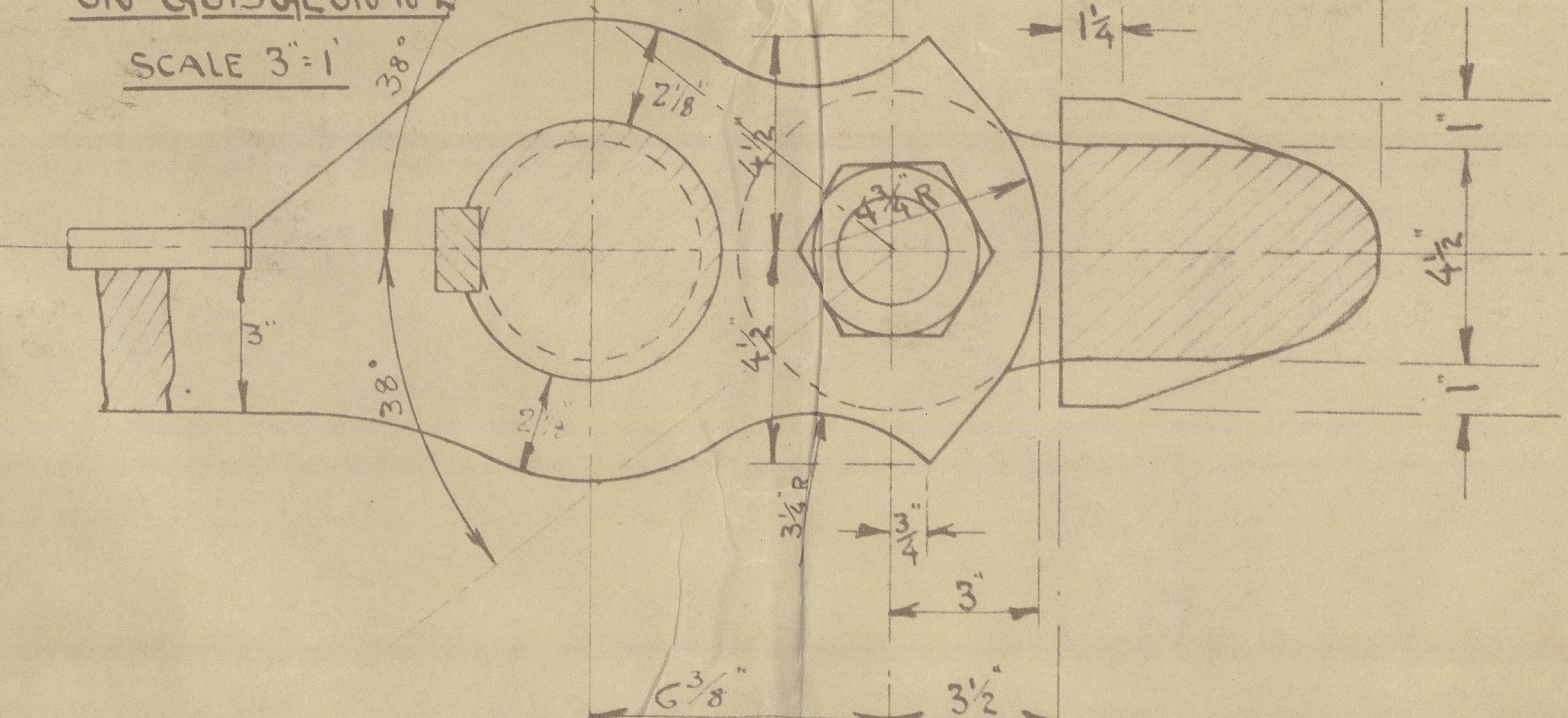
SEC. AREA 28.125 SQ INCH.

FRAME SPACING 24"

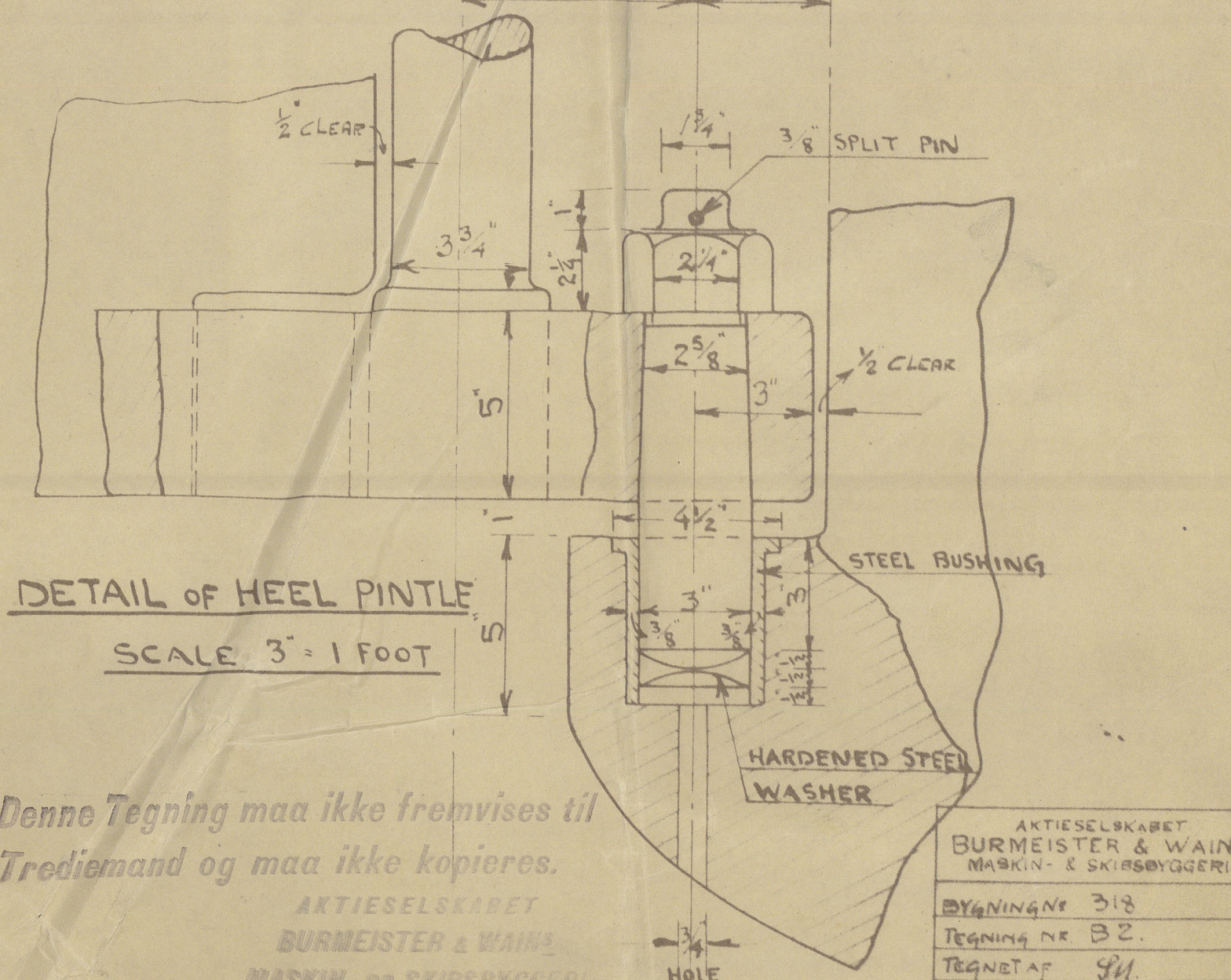
DETAIL OF RUDDER ARM
 AND GUIDGEON
 SCALE $3'' = 1 \text{ FOOT}$



DETAIL OF STOPPER
 ON GUIDGEON No 2
 SCALE $3'' = 1 \text{ FOOT}$



DETAIL OF HEEL PINTLE
 SCALE $3'' = 1 \text{ FOOT}$



Denne Tegning maa ikke fremvises til
 Trediemand og maa ikke kopieres.

ARTIESELSKABET
 BURMEISTER & WAIN
 MASKIN- OG SKIBSBYGERI
 KOBENHAVN

ARTIESELSKABET	BURMEISTER & WAIN
MASKIN- OG SKIBSBYGERI	
BYGNING 318	
Tegning nr. B 2.	
Tegnet af 9/11	
Kontrolleret af H. P.	
Erhvervet af	
Dato 30-6-24	
Skala $3\frac{3}{4}'' = 1'-0''$	
RUDDER AND STERN	
POST 17	

9.7.24.

Frederborg Skibverft og Karkbyggeri No. 31.

(Barnmeister & Wain)
Newbuilding No. 318,
for Adelaide Steamship
Co.

—
Hull, Port & Rudder.

—
Approved plan.



S/S. "Mulera"

of Adelaide.

Exp. Rpt. No. 7124.



© 2021

Lloyd's Register
Foundation

010519 - 010525 - 0033