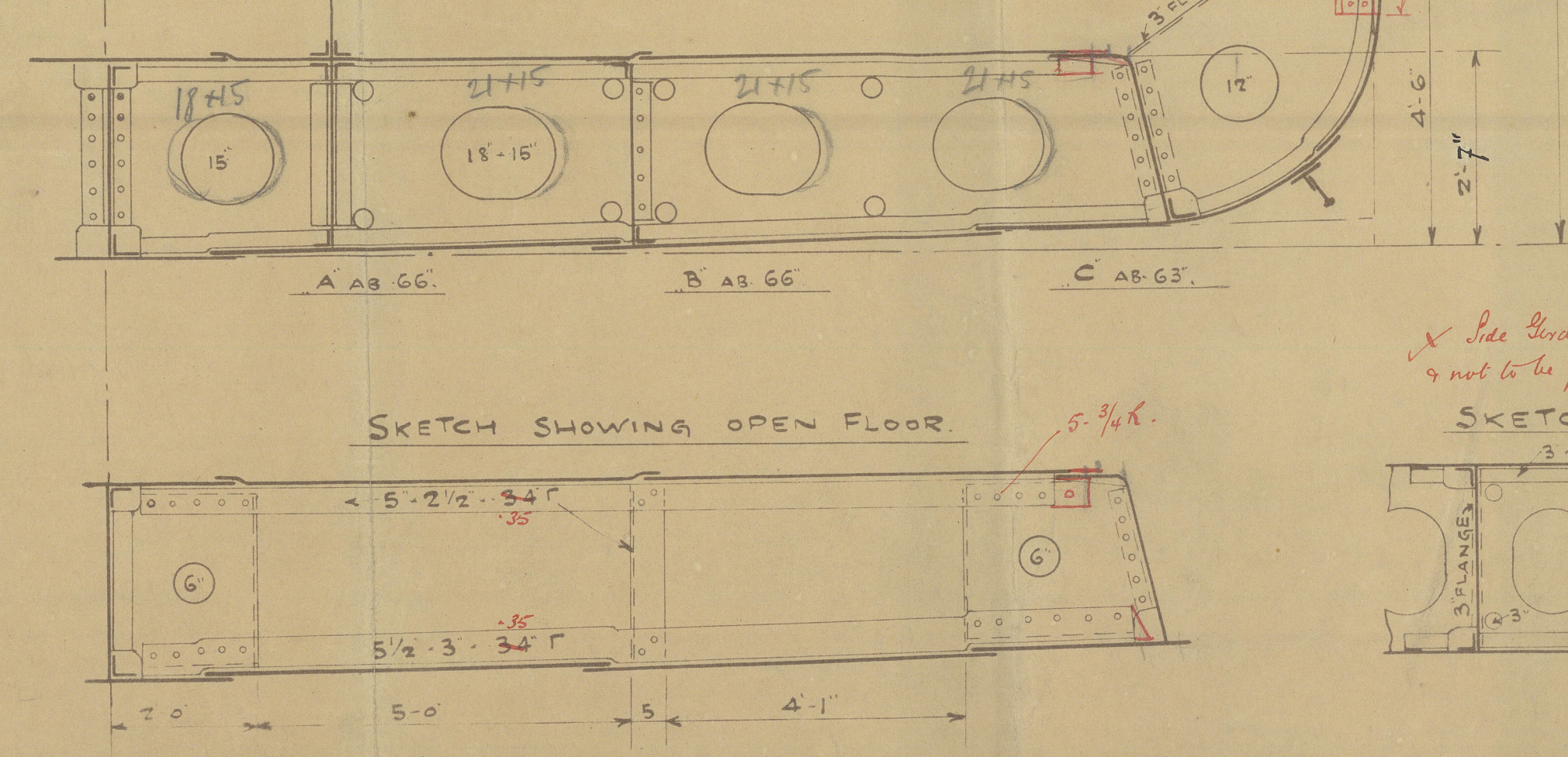


SCALE $\frac{1}{2}" = 1 \text{ FOOT.}$

(N.B. For equipment to be in accordance with letter on Equipment number must not exceed 11600)



PRESS FOR A DIALANCE OF 3/32 WITH THE BRIDGE.
 STRINGER PLATE TO BE INCREASED 50% IN THICKNESS
 OVER THE BREAK.
 UPPER DECK INSIDE BRIDGE.
 PILLARS: ONE ROW. BEAMS: 6-3-³⁶ 5 BRACKETS 18-3
 HALF BEAMS 6-3-³² 4 BRACKETS 18-³⁴ 6.
 STRINGER PLATE: 45' - 34'.
 STRINGER ANGLE 3-3 - 34'.
 DECK PLATING: -28'³⁶

	FOR	AT	INTR.	REMA
	2 L	ENDS	MOTR.	
CENTRE KEEL TOP	3' - 3' - 36 ⁵⁷	3' - 3' - 36 ⁵⁷	3' - 3' - 36	SINGLE BUT ^{TOOBL} --
-- " BOTTOM	3' - 3' - 40	3' - 3' - 40	3' - 3' - 40	SINGLE BUT DO
-- " LUGS	3' - 3' - 30	3' - 3' - 30	3' - 3' - 30	SINGLE BUT DO
MARGIN ANGLES	3' - 3' - 36 ⁵⁷	3' - 3' - 36 ⁵⁷	3' - 3' - 36	SINGLE TWO
-- " IN ROUTE	3' - 3' - 30	3' - 3' - 30	3' - 3' - 30	--
SIDE GEAR HORN	3' - 3' - 30	3' - 3' - 30	3' - 3' - 30	<i>Top trans done</i>
-- " LUGS	2 1/2 - 2 1/2 - 28 ³⁴	2 1/2 - 2 1/2 - 28 ³⁴	3' - 3' - 28	SINGLE BUT FRAMES SING REV. FR. SINGL
FR & REV FR SOLP	3' - 3' - 30	3' - 3' - 30	3' - 3' - 30	SINGLE TWO
FRAMES OPEN F	5 1/2 - 3' - 34 ⁴⁷			
REV FR " "	5' - 2 1/2 - 34 ⁴⁷			--

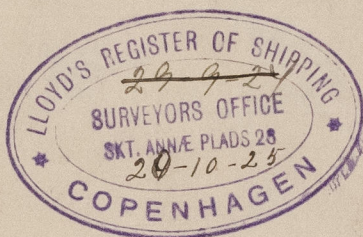
3.3.30 SINGLE

© 2021
010510 1050 0-0033

Crendborg Skibsværft og Maskinbyggeri No. 11.
Burmeister & Wain's
(Newbuilding No 318)

Burmeister & Wain's
(Maskin. Skibsbyggeri)

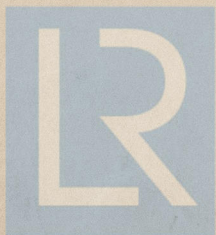
Midship - Section.



S/S "Mulora".

of Adelaide.

Gen. Rpt. No. 7124.



© 2021

Lloyd's Register
Foundation

010519 - 010525 - 0032