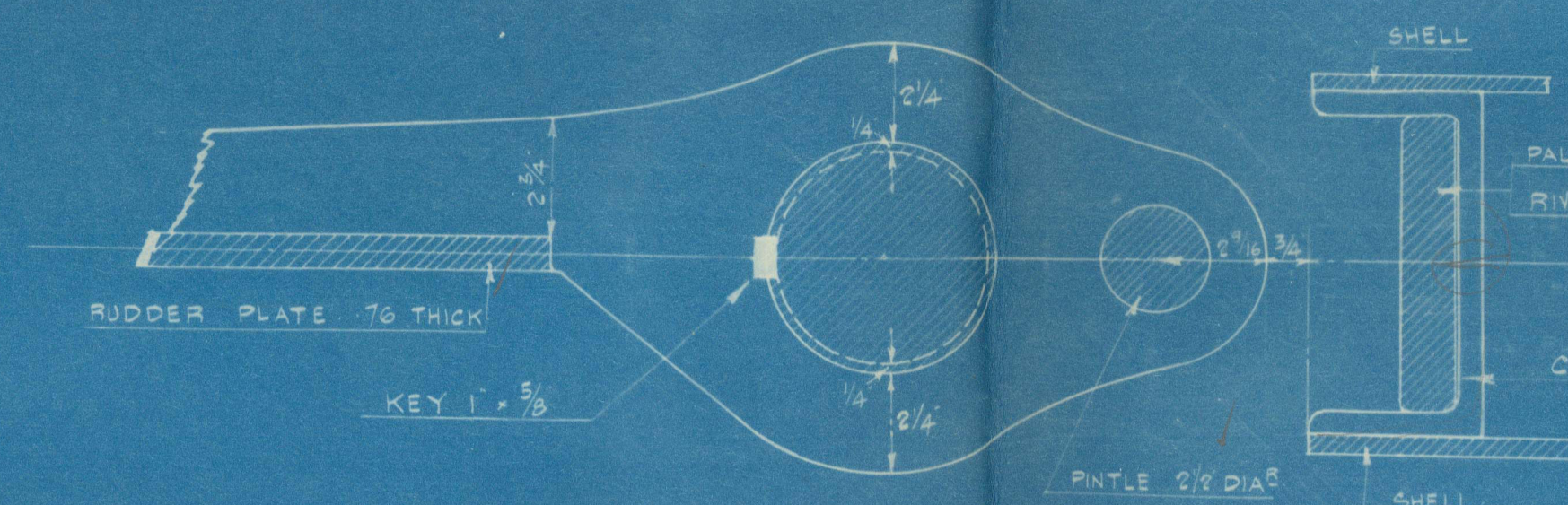


RUDDER & STERNPOST.

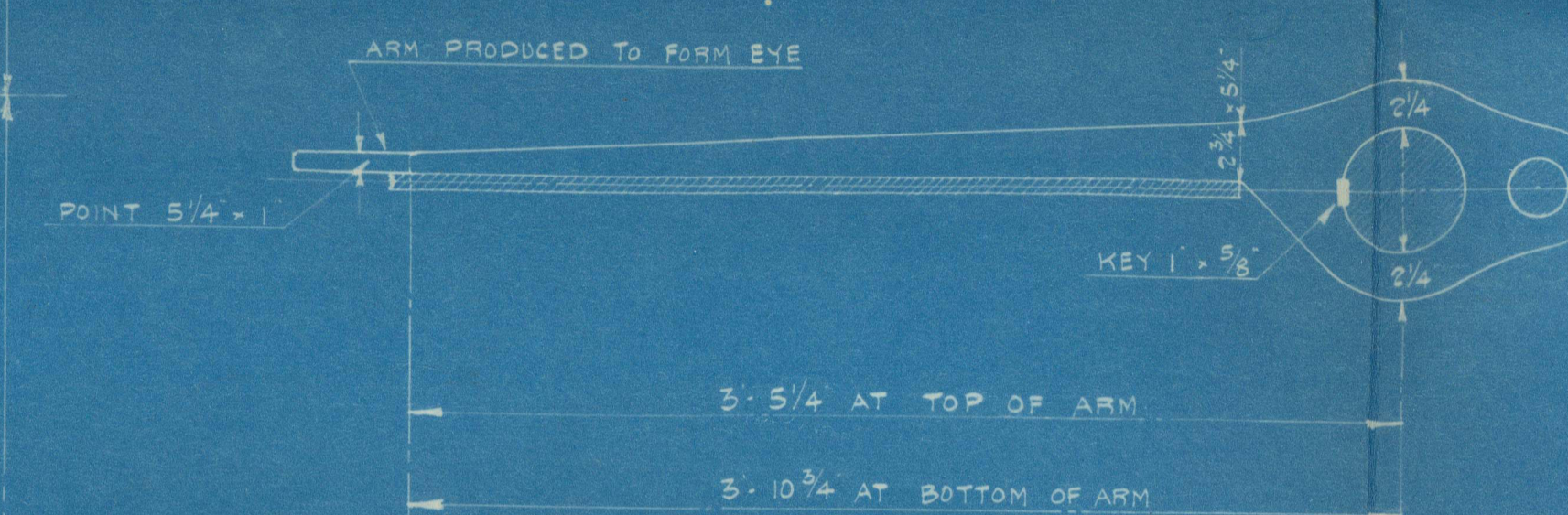
T.S.S. No 753
SCALE 1/4" = 1 FOOT

TO MEET REQUIREMENT OF CLASS B. B. & C.

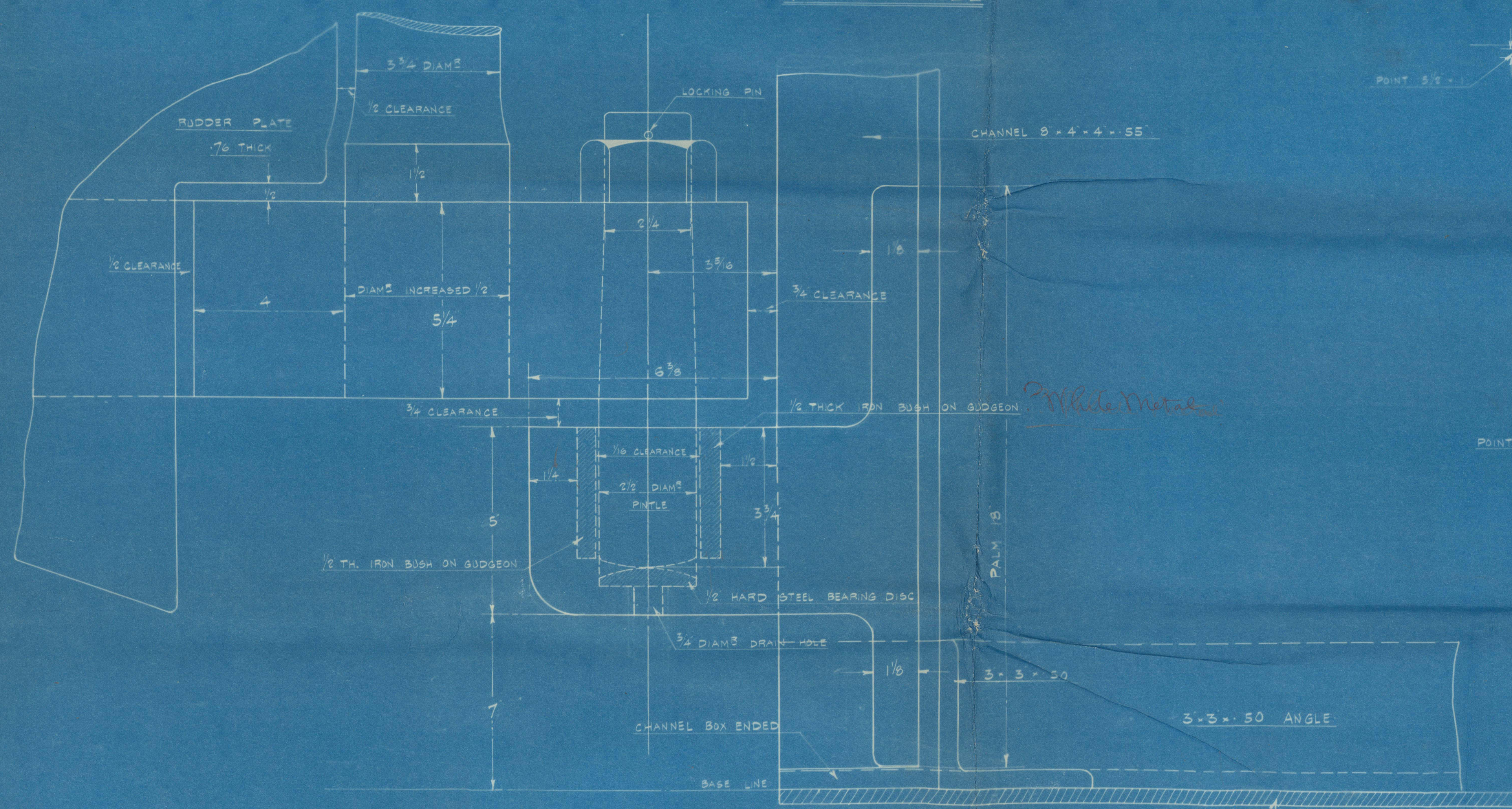
NOTE: RUDDER TO BE A FORGING.



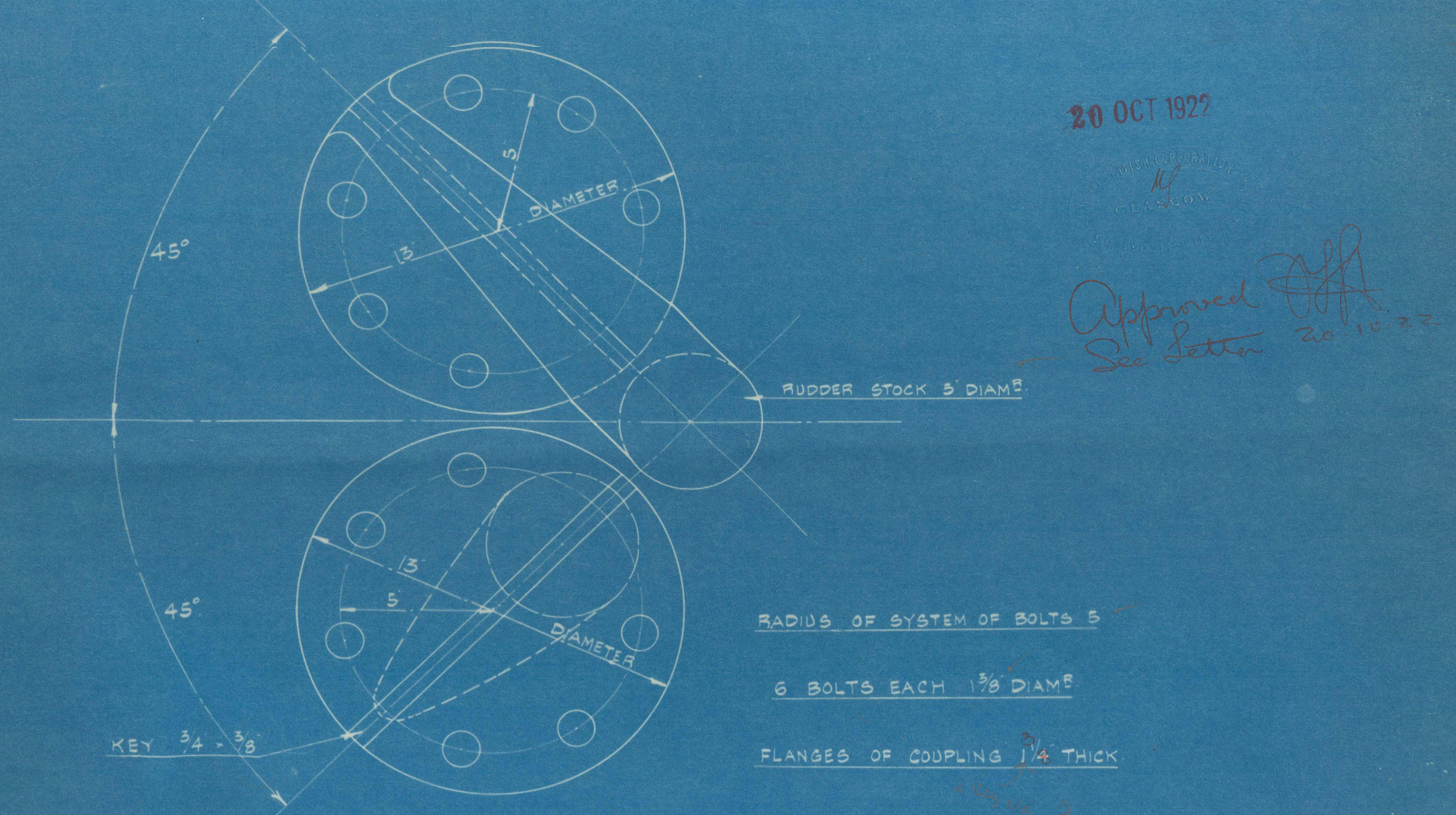
DETAIL OF ARMS IN WAY OF RUDDER STOCK ETC.
1/4 FULL SIZE



DETAIL SKETCH OF GUDGEON & PINTLE (A)
3/4 FULL SIZE



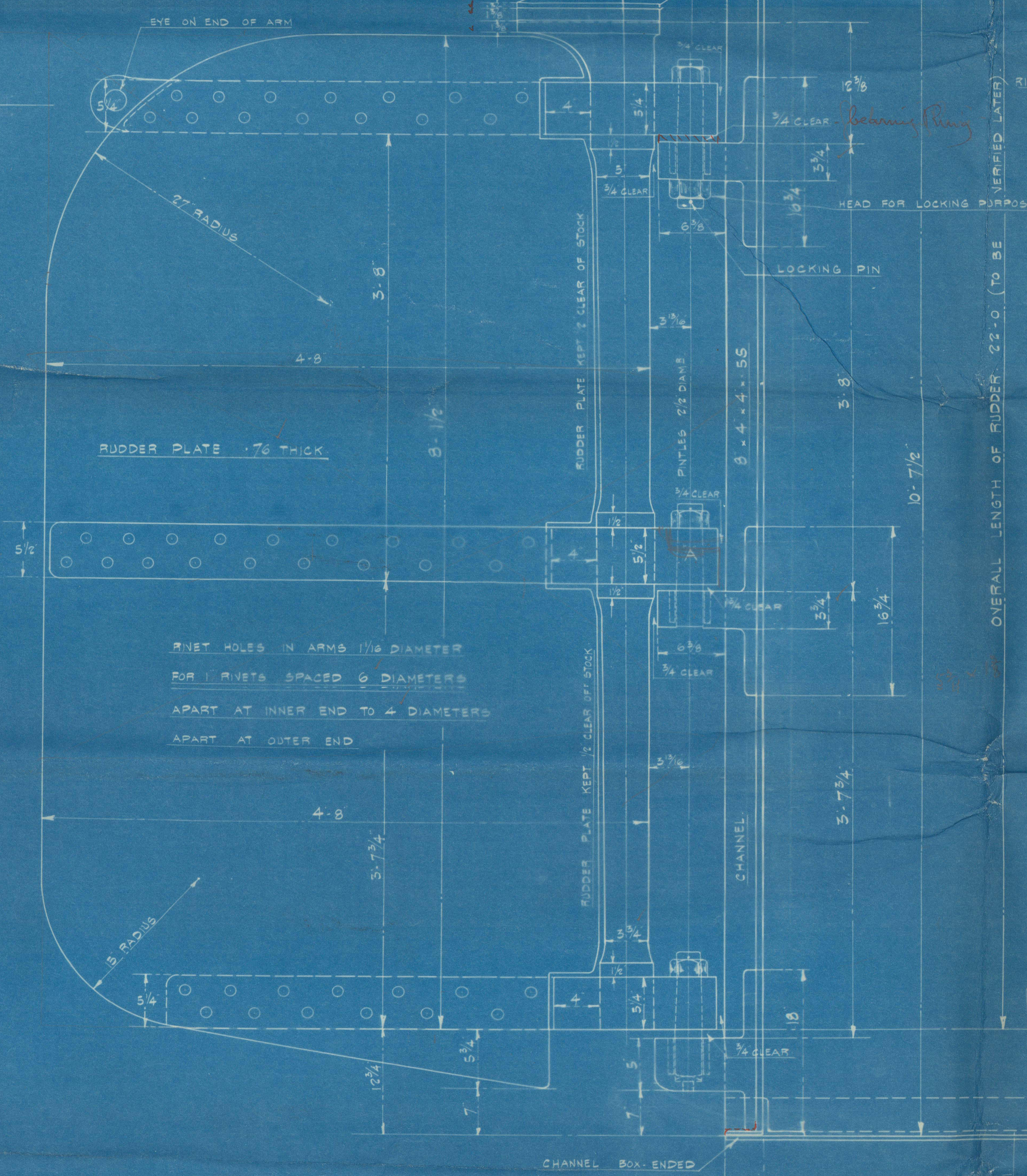
DETAIL SKETCH OF HEEL GUDGEON & PINTLE
HALF SIZE



DETAIL OF COUPLING.
1/4 FULL SIZE

NOTES

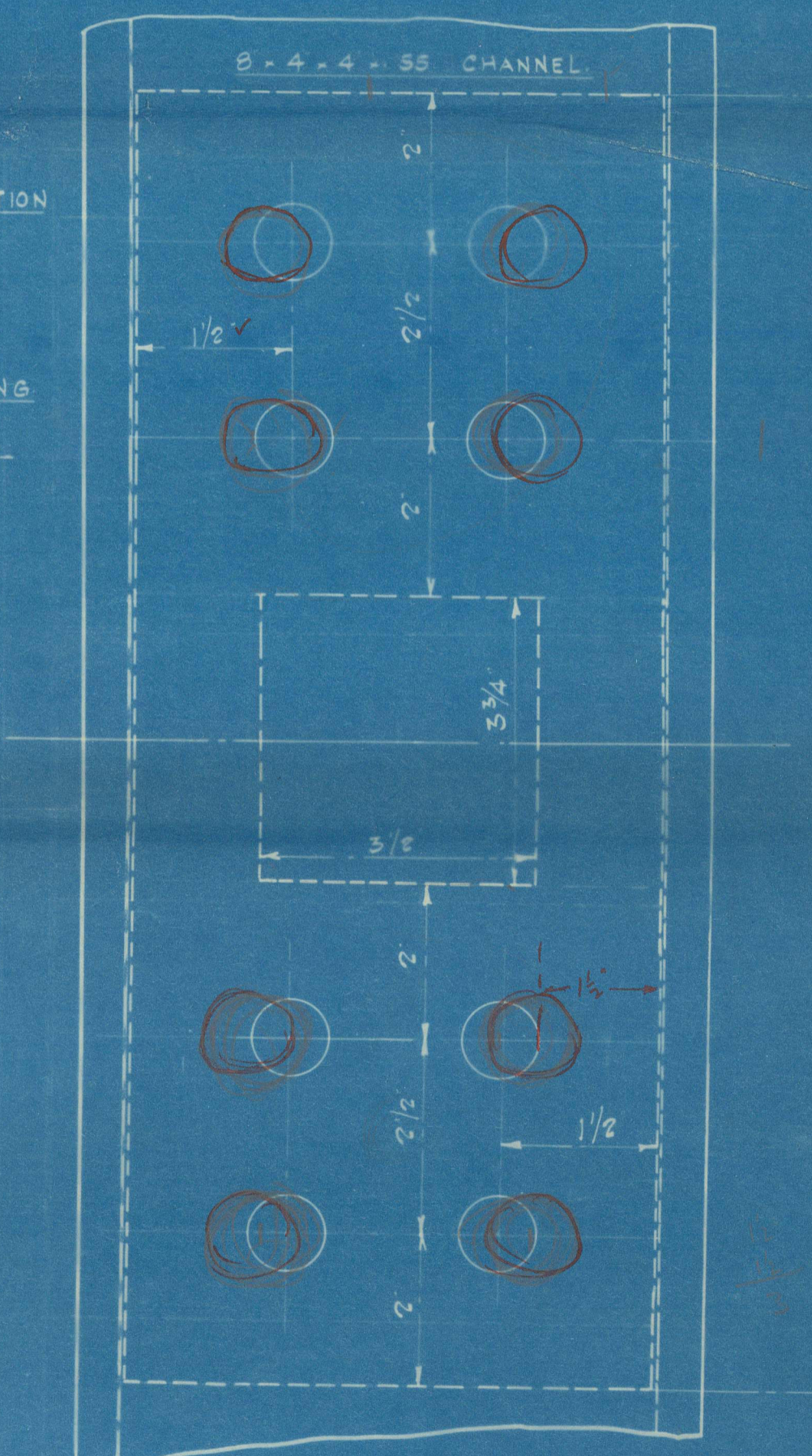
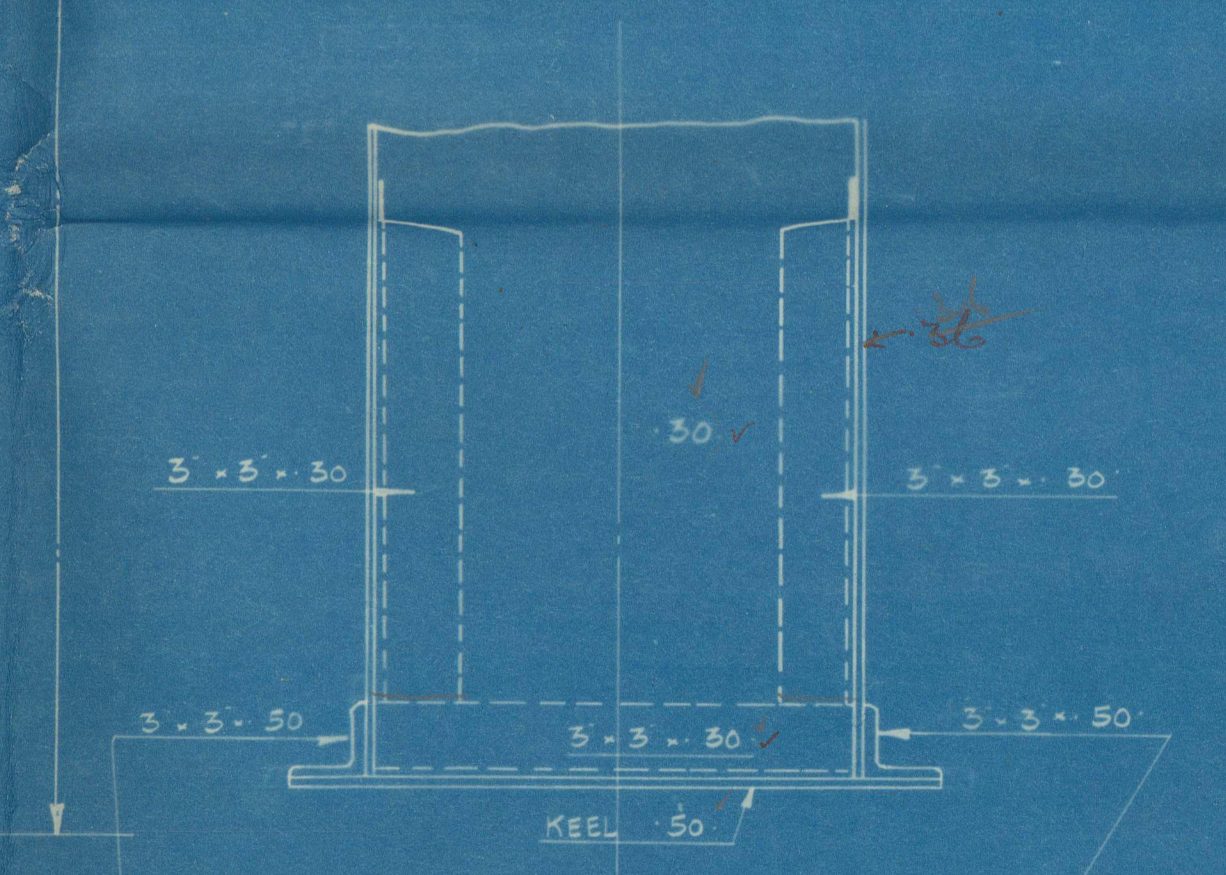
RUDDER - AREA OF RUDDER BELOW LOAD LINE MEASURED BETWEEN CENTRE LINE OF PINTLES AND BACK EDGE OF RUDDER 38.2 sq ft. CENTRE OF GRAVITY OF IMMERSED RUDDER AREA FROM CENTRE LINE OF PINTLES 2.4 FEET. SPEED NOT TO EXCEED 9 KNOTS. RIVET HOLES TO BE COUNTERBORN. RUDDER TO BE RIVET HOLE BORED. RUDDER ARMS TO BE SHROUDED ON AND KEVED.



SINGLE ROW OF RIVETS CONNECTING PALM TO CHANNEL. 3/16 HOLES FOR 3/4 RIVETS SPACED 4 1/2 DIAM. OR TO CR.

ELEVATION SHOWING CONNECTION OF PALM TO CHANNEL. 1 RIVETS CONNECTING PALM TO CHANNEL.

SECTION



SCALE 3/4" = 1 FOOT

PLAN VIEW

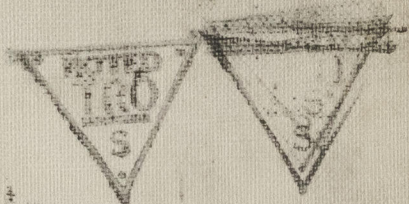
CH. 8-4-4-55

20 OCT 1922

Approved
20 OCT 1922

Lithgow
753
Rudder + Sternframe

Bag.



Received 4.12.22

LITHGOWS LTD
Nº 753

RUDDER & STERNFRAME

20.10.22

TSS.

UKI

5

010502-010508-0016



© 2020

Lloyd's Register
Foundation