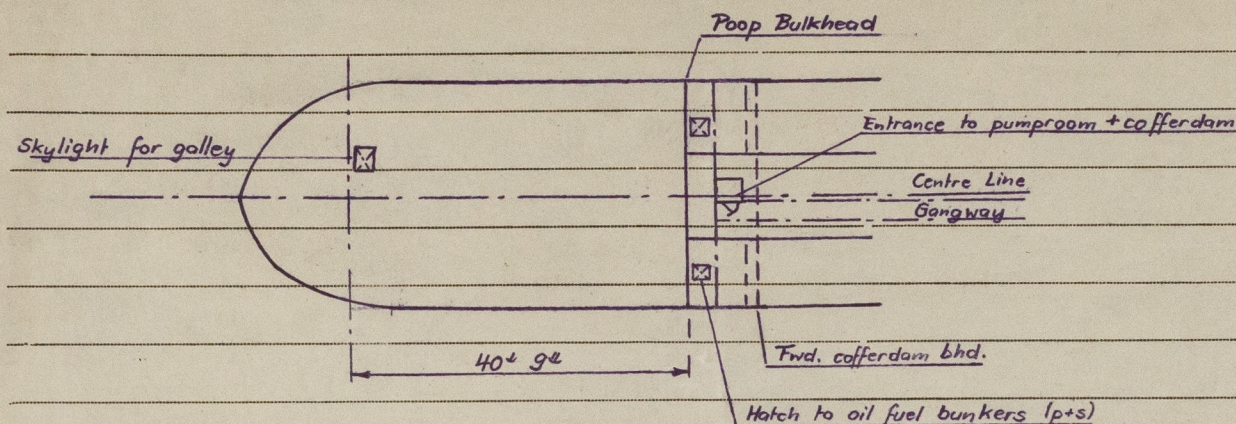


## LLOYD'S REGISTER OF SHIPPING

UNITED WITH THE BRITISH CORPORATION REGISTER

## ALTERATIONS TO CONDITIONS OF ASSIGNMENT OF LOADLINES

Ship's Name Max S. Official No. \_\_\_\_\_Port of Registry CorintoThis ship has been under survey at Hamburgon 24<sup>th</sup> May, 1958 and subsequently 1958 and the following alterations to the conditions of assignment of loadlines have now been ~~effected~~/found:—

1. Hatch to oil fuel bunkers (p+s) on upper deck; size 18" x 16", coaming 9" x .38", steel hatchcover .38" fitted with 4 turnbuckles
2. Entrance to pumproom aft and cofferdam; steel trunk .38" fitted with wt. hinged steel door opening 48" x 20", sill 22"
3. Skylight to galley on poopdeck (ps) aft; size 27" x 27", coaming 12" x .38", wt. hinged steel cover .38" fitted with bulleye and 2 toggles
4. 2 Vents on poopdeck to passage blanked off with welded insert plates
5. 2 Vents on casing top to engine room blanked off. Ventilation to engine room led through funnel and fitted with hinged steel flap operated from outside funnel.

M. Dünstaler 30-5-58

Noted  
J. G. K.  
5/6/58

A copy of this Report has been placed on board.



© 2021

Lloyd's Register  
Foundation

010445-010501-0245