

Lloyd's Register of Shipping.
SURVEYS FOR FREEBOARD.
(CONDITIONS OF ASSIGNMENT.)

Index No. 37588
(For London Office only)

20 APR 1944

Ship's Name "EMPIRE ALDERNEY."

Port of Survey HULL.

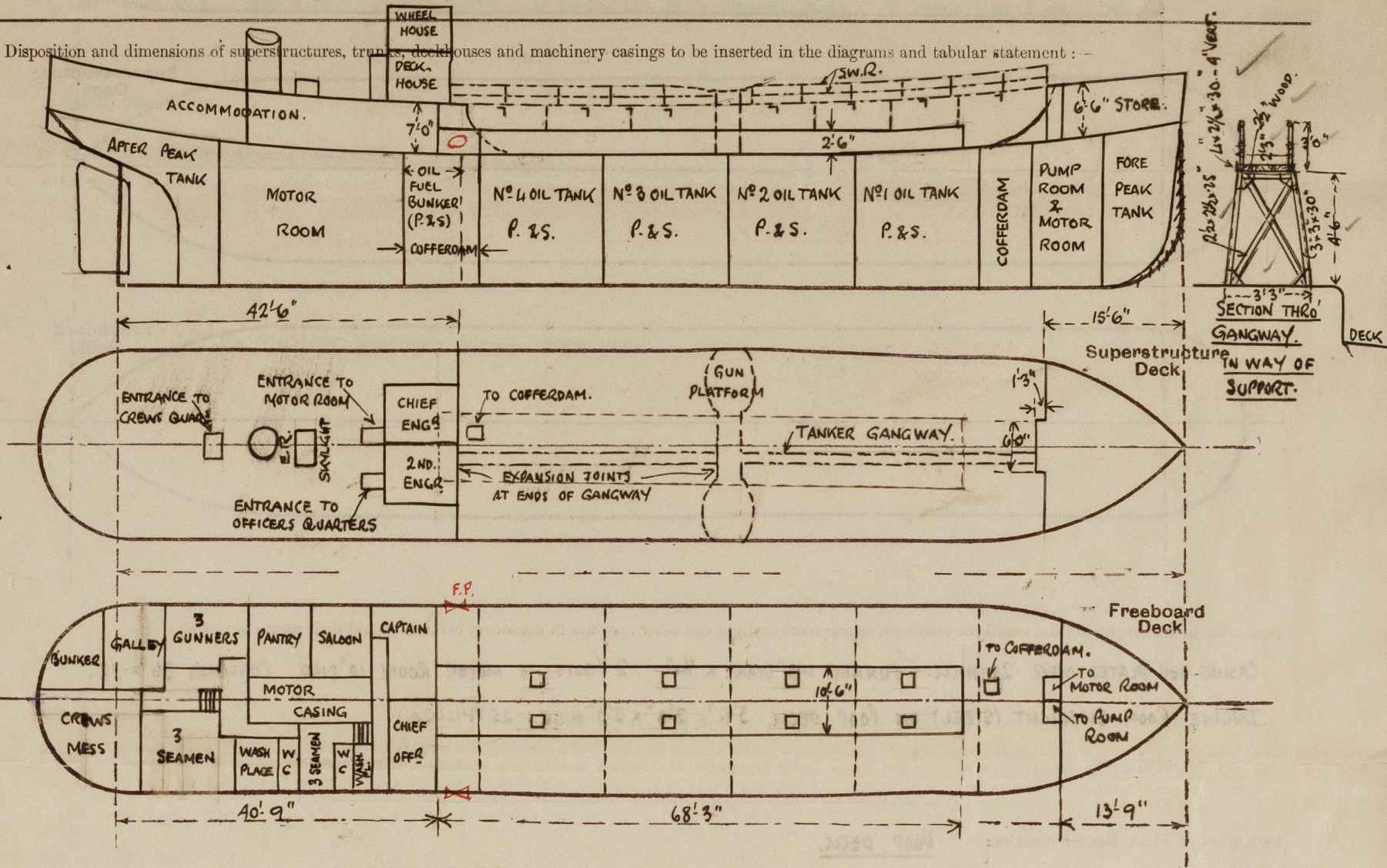
Official Number 180114

Surveyor's Signature J. M. Macleod

Nationality and Port of Registry BRITISH - HULL GOOLE.

Date of Survey DURING CONSTRUCTION

Disposition and dimensions of superstructures, trunks, deckhouses and machinery casings to be inserted in the diagrams and tabular statement :-



Particulars of Superstructures, Trunks, Casings, Deckhouses.

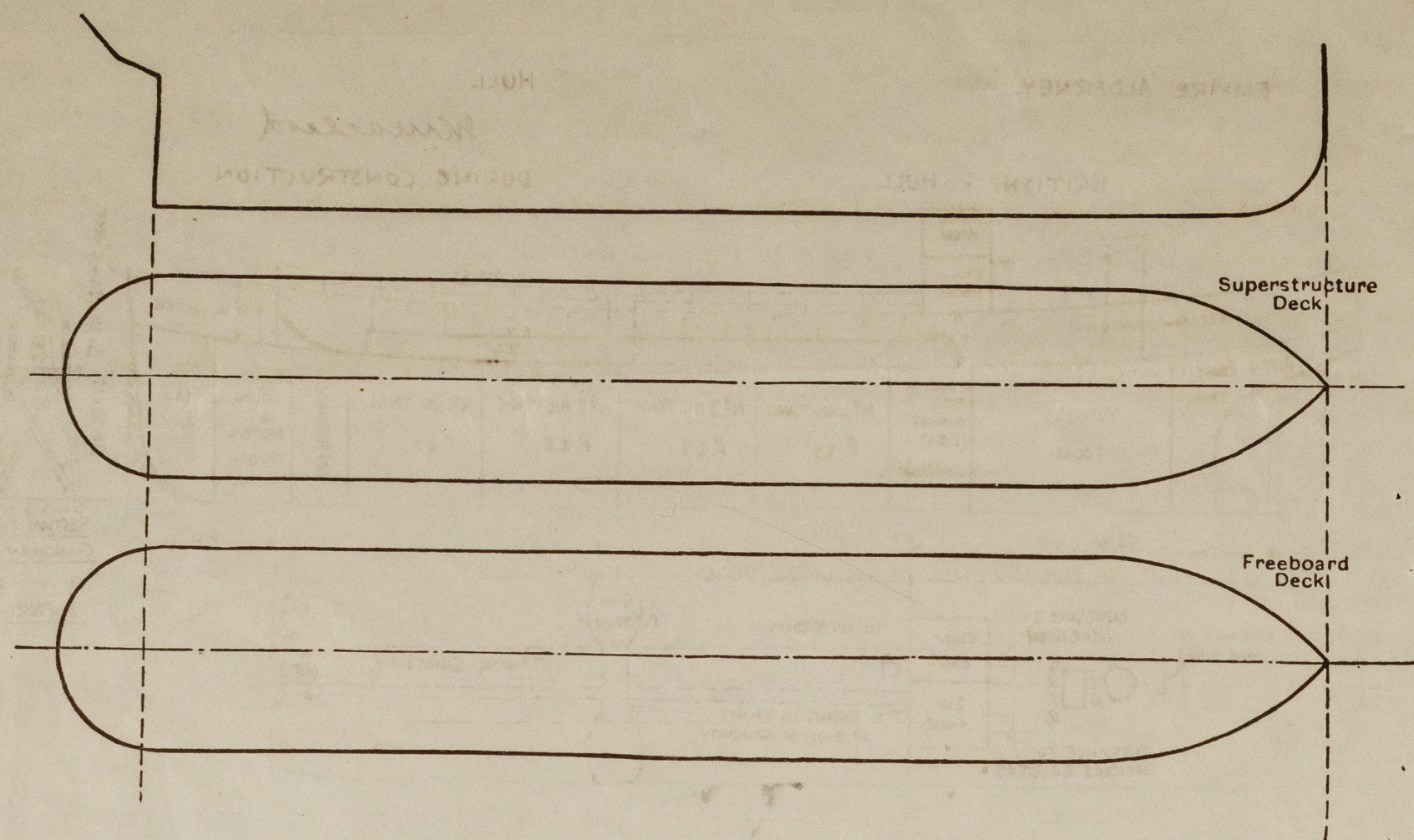
	Coaming	Plating	Stiffeners	Spacing	End Attachments of Stiffeners	Size of Openings	Height of Sills	Height of Casings
Poop Bulkhead	30	30	4" x 3" x 36"	30"	BKTS. TOP & BTM.	NONE	✓	7'0" ✓
Raised Quarter Deck Bulkhead ...								
Bridge, After Bulkhead								
Bridge, Forward Bulkhead								
Forecastle Bulkhead	20	20	2 1/2" x 2 1/2" x 26"	30"	BKTS. TOP & BTM.	4'6" x 2'0"	18"	6'6" ✓
Trunk, Aft	30	30	3" x 2 1/2" x 30"	21"	BKTS AT BOTTOM.	O.T. HATCHWAYS 2'6" x 2'6"	✓	2'6" ✓
Trunk, Forward								
Exposed Machinery Casings on Freeboard or Raised Quarter Decks ...								
Exposed Machinery Casings on Superstructure Decks								
Machinery Casings within Superstructures not fitted with Class I Closing Appliances								
Deckhouses on Flush Deck Ships ...								

Particulars of Closing Appliances (state if capable of being manipulated from both sides).

Poop Bulkhead	NONE
Raised Quarter Deck Bulkhead ...	✓
Bridge, After Bulkhead	✓
Bridge, Forward Bulkhead	✓
Forecastle Bulkhead	2 HINGED STEEL DOORS 4'6" x 2'0" - 18" SILLS. SPRING LOCKS OPERATED FROM BOTH SIDES.
Exposed Machinery Casings on Freeboard or Raised Quarter Decks ..	✓
Exposed Machinery Casings on Superstructure Decks	✓
Machinery Casings within Superstructures not fitted with Class I Closing Appliances	✓
Deckhouses on Flush Deck Ships ...	✓

EMPIRE ALDERNEY.

Particulars of Gangway Cargo and Coaling Ports :—



CASING TOP PLATED OVER .25 THICK. ✓ FUNNEL 4'-0" DIAR. X 1/4". ✓ 2 VENTS. TO MOTOR ROOM 10" DIAR. COAMING 36"x-32".

Particulars of Flush Bunker Scuttles:— POOP DECK.

Particulars of Companionways :- ON UPPER DECK FORWARD. TO PUMP ROOM & MOTOR ROOM (2) 6'6" HIGH \times 3'6" \times 3'6" \times 1/4". HINGED STEEL DOORS - 2 "SILLS

TO OFFICERS' QUARTERS, 7 1/2" HIGH, x 2 1/2' x 3 1/2' x 1/4" " " " " " " " " " " ✓

TO CREW'S " 7'0" HIGH x 4'6" x 2'9" x 1/4". " " " " " " " " " " " "

Particulars of Ventilators in exposed positions on freeboard and superstructure decks :— UPPER DECK.

1 " " 6" " TO FORWARD COFFERDAM (P. & S).

" 36" x 30"

COWL VENTILATORS SUPPLIED WITH WOOD PLUGS

1 " " 6" TO AFTER COFFERDAM (") ON TRUNK TOP. " 30" x 30"

2 CANVAS COVERS.

POOP DECK. 2 COWL VENTS 6" DIAM. TO PASSAGES. COAMING 30" x 30".

5 MUSH. VENTS (PORT) & 8 (STBD) 6" DIAR. TO CABINS &c. ON UPPER DECK.

DECKHOUSE ON POOP DECK. 2 COWL VENTS 6" DIAM. TO CABINS. COAMING 2 1/2" x 30".

Particulars of Air Pipes in exposed positions on freeboard, raised quarter, or superstructure decks:—

FORECASTLE DECK:- AIR PIPE TO FORE PEAK TANK - 2" DIAR - 15" TO OPENING.

UPPER DECK:- " " " OIL FUEL BUNKER P. & S. 2" DIAR. 6'0" HIGH. STAYED TO POOP FRONT BULKHEAD.

POOL DECK:- " " " AFTER PEAK TANK. - 2" DIAR - 15" TO OPENING.

AIR PIPES SUPPLIED WITH WOOD PLUGS.

" " " FRESH WATER TANK - 2" " " "

" " TO OIL FUEL BUNKERS SUPPLIED

" " " LUB. OIL TANK. - 2' " " " "

WITH GAUZE WIRE COVER

NONE.

Particulars of Scuppers and Sanitary Discharge Pipes :—

CREW'S W.C (STARBOARD SIDE). 4" DIAM. WITH G.M STORM VALVE ON SHIP'S SIDE - 15" FROM UPPER DECK TO BOTTOM OF OPENING.

OFFICER'S W.C. " " 4th " " " " " " " " " " " " " " "

BATH, SHOWER &c. " " 2" " " " " " " " - 15' " " " " " "

GALLEY & PANTRY SINKS (PORT) 2" " " " " " " " " " " " " " " "

The overboard scuppers and discharges from the intact-poop space have an automatic screwdown non-return valve controlled from above the foreboard deck.

Particulars of Side Scuttles :—

NO SIDE SCUTTLES BELOW UPPER DECK.

Vertical distance of Sill of lowest Side Scuttle above top of keel

Particulars of Guard Rails :—

UPPER DECK. STANCHIONS $2\frac{1}{2} \times \frac{3}{4}$ " FLAT BAR 3'0" HIGH - SPACED 6'0" APART. WITH 3 SW.R. SPACED 12".

FORECASTLE & POOL DECKS " " " " 3'6" " " " " " 2 SWRS " 18"

Particulars of Gangways, Lifelines, etc. :—

GANGWAY - SEE SKETCH ON PAGE 1.

Particulars of Freeing Arrangements.						
	Length of Bulwark	Height of Bulwark	Size of Freeing Ports	Number each side	Area each side	Rule area each side
After Well	✓					
Forward Well	✓					

State position of each freeing port	{ After Well :— ✓ { Forward Well :— ✓
(F. and A. position and height above deck edge)			

State whether the freeing ports are fitted with shutters, bars, or rails, and give particulars of such :—

Additional area where sheer is less than standard.

010495-010501-0244 2L

PARTICULARS OF PROTECTION TO OPENINGS, ETC.

HATCHWAYS ON FREEBOARD AND SUPERSTRUCTURE DECKS.									
Description of Hatchway		O.T. HATCHWAYS TO CARGO OIL TANKS.		To COFFERDAMS					
Dimensions of Hatchway		2'6" x 2'6"		18" x 16"					
COAMINGS	Height above Deck	12"	✓	9"	✓				
	Thickness	.375		.375					
	Stiffeners	NONE							
	Brackets, Stays								
HATCH BEAMS	Number	NONE		NONE					
	Spacing								
FORE AND AFTERS	Scantling and Sketch								
	Number								
	Spacing								
	Unsupported Lengths								
HATCH COVERS	Scantling* and Sketch	NONE		NONE					
	Bearing Surface	✓		✓					
HATCH COVERS	Material	STEEL PLATE		STEEL PLATE					
	Thickness	.50		.375					
	How fitted	✓		✓					
	Bearing Surface	✓		✓					
Spacing of Cleats		8 STEEL TURNBUCKLES		4 STEEL TURNBUCKLES					
Number of Tarpaulins									

*Are wood fore and afters steel shod at all bearing surfaces ?
 Are battens and wedges efficient and in good condition ?
 Are tarpaulins in good condition and in accordance with rule requirements ?
 Are lashings provided in accordance with rule requirements ?

Particulars of any special features :—

Endorsement at first survey and at surveys for renewal of Certificate :—

The fittings and appliances are in accordance with the particulars shown on this form (or as now modified) and are in good condition.



© 2021

Lloyd's Register Foundation