

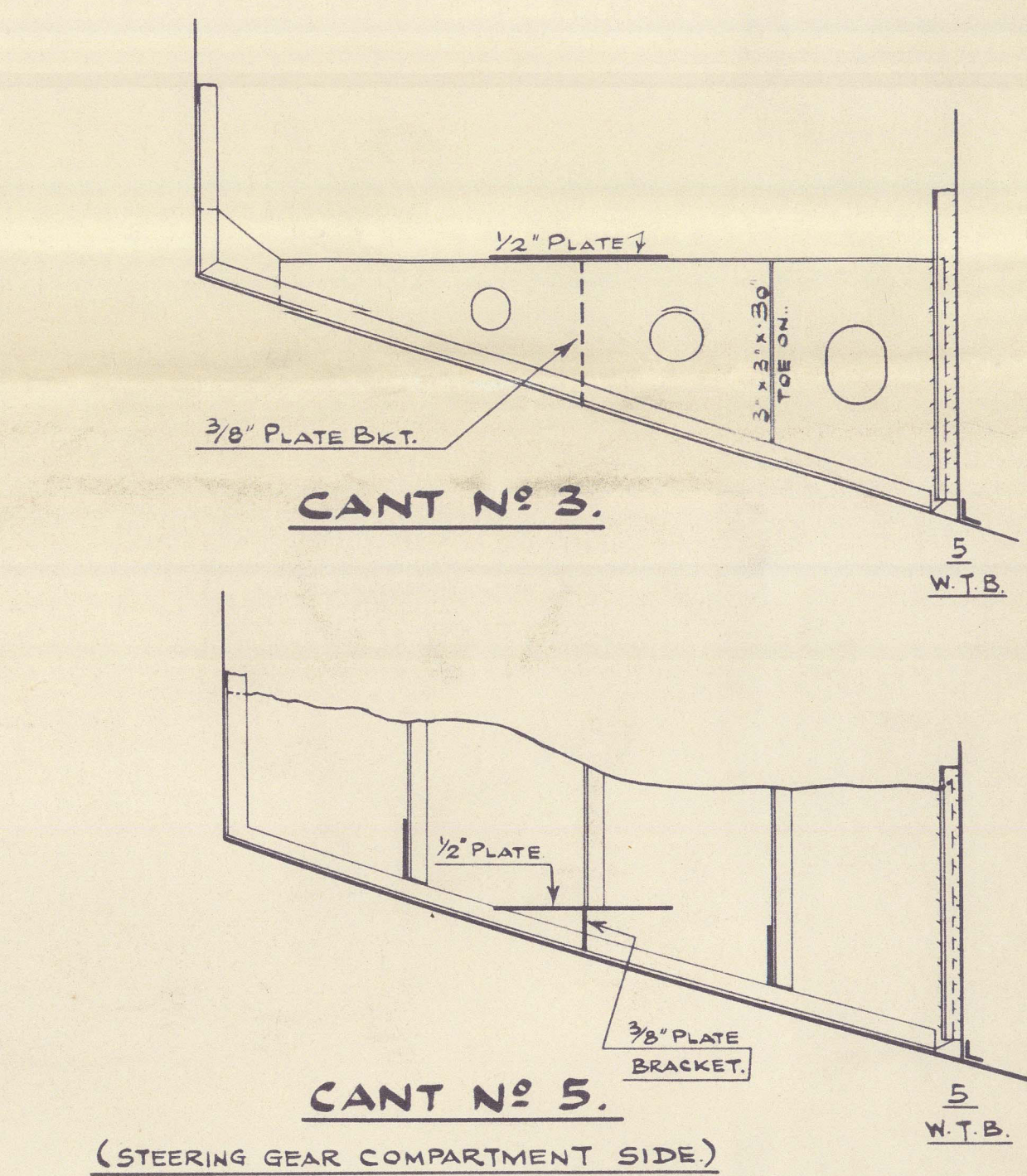
YARD No. 428.

TWIN RUDDERS.

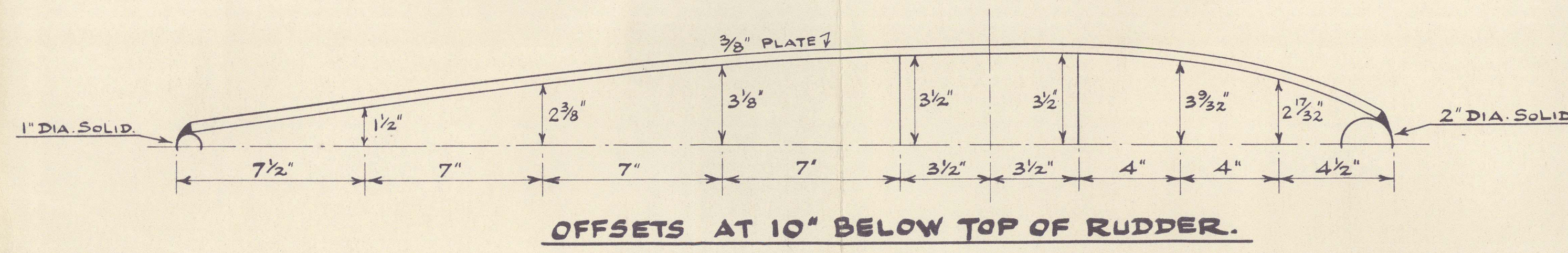
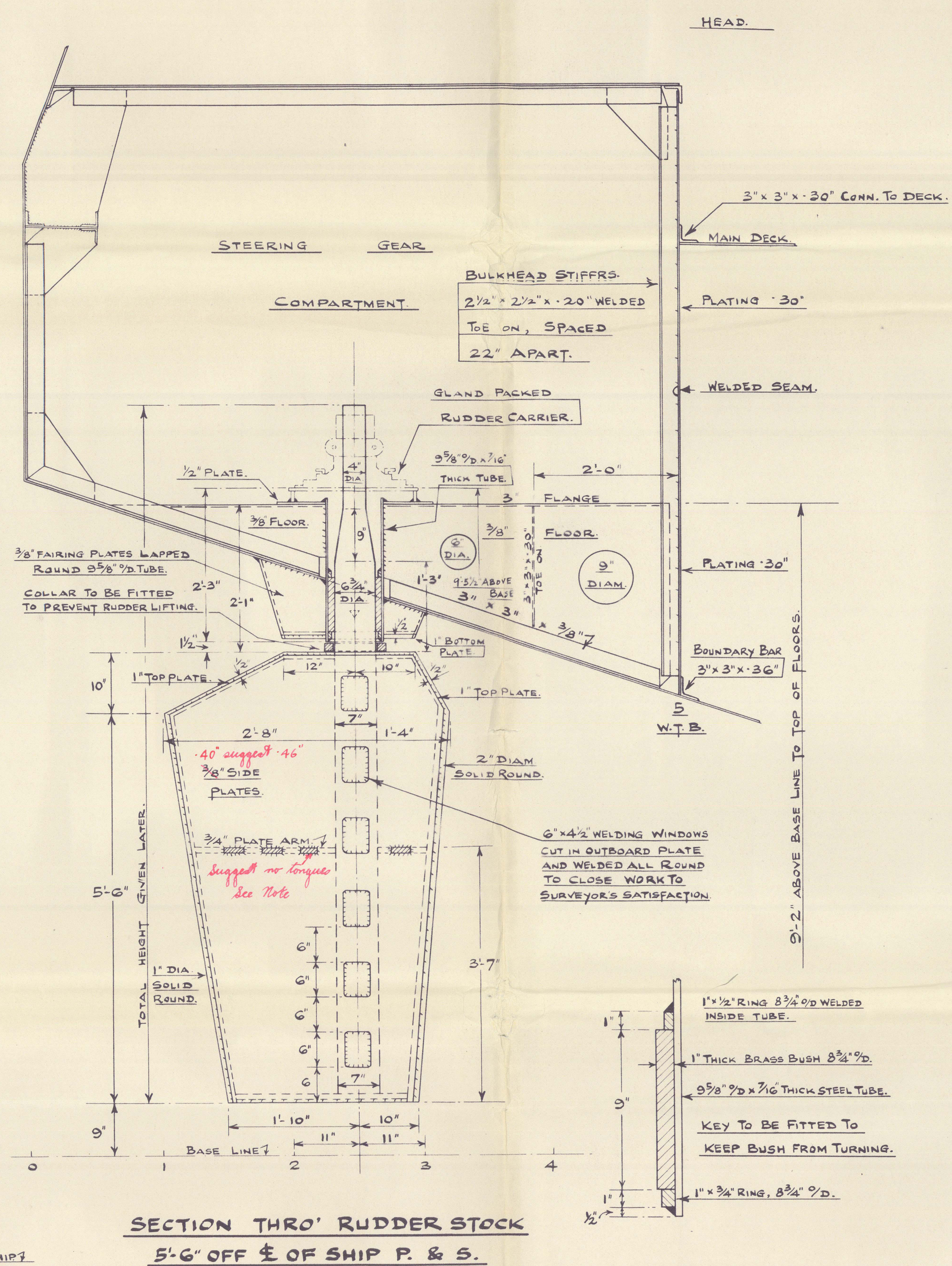
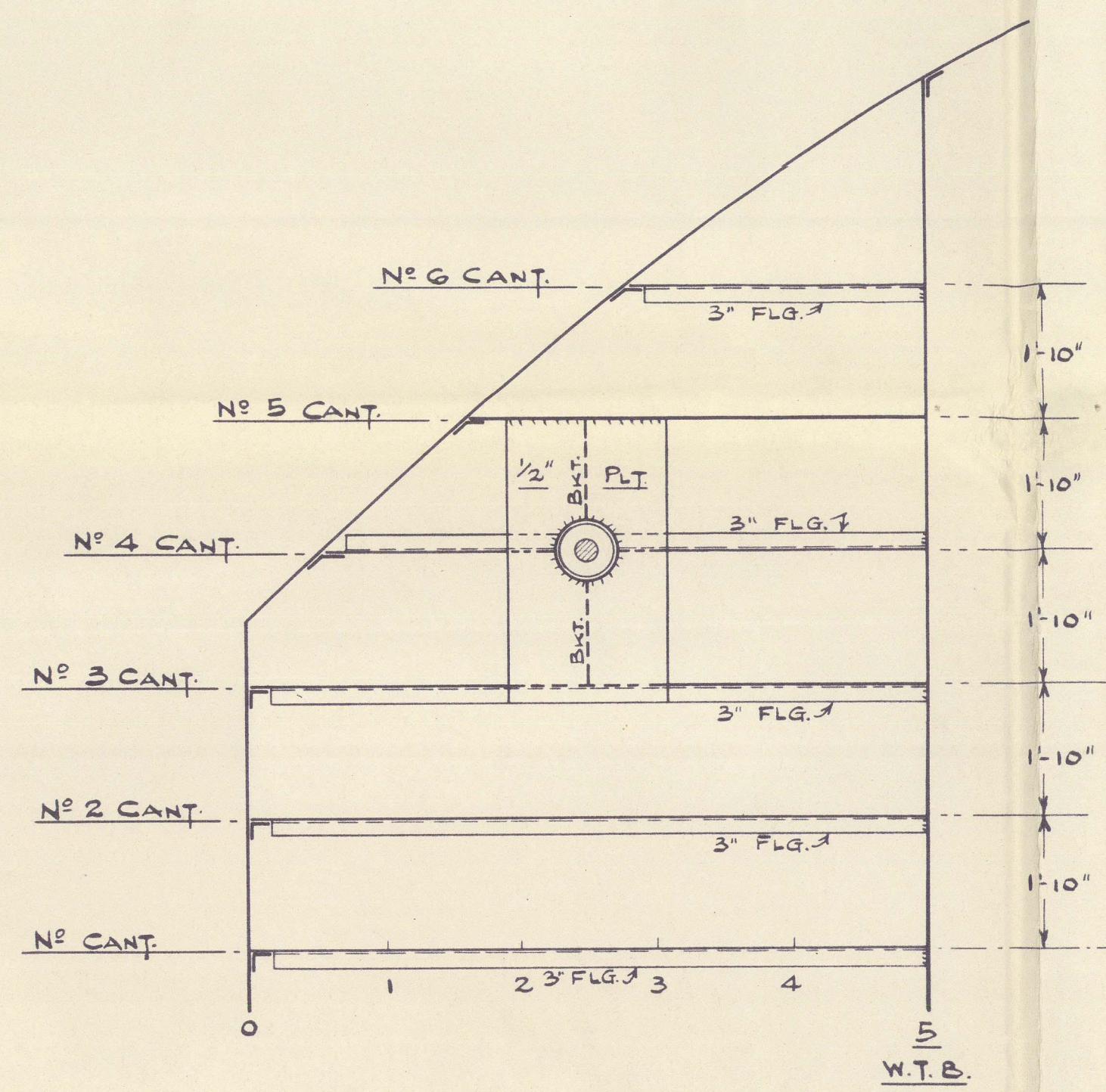
SCALES :- 1" & 1/2" = 1 FOOT.

NOTE :-
RUDDER STOCK TO BE OF FORGED
INGOT STEEL TO LLOYDS TESTS
AND REQUIREMENTS COMPLYING
WITH P.1009. TO BE WELDABLE
QUALITY CONTAINING NOT MORE
THAN 0.23% CARBON.

AREA OF EACH RUDDER 20.56 SQ. FT.
C.G. ABAFT $\frac{1}{2}$ OF STOCK. 5.87 FT.
A x D OF COMPLETE RUDDER. 11.88
80% A x D OF AREA ABAFT OF STOCK. 12.09 12.40
SPEED OF VESSEL. 9 1/2 KNOTS.
DIAM. OF STOCK. 4"



FOR DETAILS OF CANTS SEE PLAN
OF "STEERING GEAR COMPARTMENT,
CANT FRAMES AND BEAMS"



TOP OF RUDDER
CLEAR OF STOCK.

TOP OF RUDDER
IN WAY OF STOCK.

BOTTOM OF FAIRING PLATES
CLEAR OF 9 5/8" ϕ D TUBE.

BOTTOM OF RUDDER
CLEAR OF STOCK.

BOTTOM OF RUDDER
IN WAY OF STOCK.

PLAN VIEW AT TOP OF FAIRING PLATES.

PLAN VIEW AT BOTTOM OF FAIRING PLATES.

PLAN VIEW AT TOP OF RUDDER.

PLAN VIEW AT CENTRE ARM.

PLAN VIEW AT BOTTOM OF RUDDER.

DETAIL OF COLLAR.

SECTION THRO' RUDDER STOCK.
LOOKING FORWARD.

FERGUSON BROTHERS
(PORT GLASGOW) LTD.
SHIPBUILDERS & ENGINEERS
DRAWN BY W. L. Findlay. DATE 13th May, 1958. CHECKED BY

APPROVED
LLOYDS REGISTER OF SHIPPERS
13/6/58

FERGUSON BROS. (P.C.) LTD

⑥

T.S.M.V. "MAKOURIA"

NO 428.

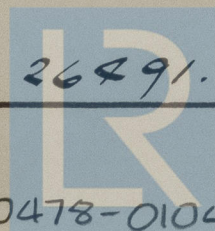
TWIN RUDDERS.

M/M

10483.

GREENOCK F.E. REPORT No. 26491.

© 2021



Lloyd's Register
Foundation

010478-010483-0298