

No 141. RUDDER FRAME.

FORGING. ARMS KEYED & SHRUNK ON TO STOCK.

PORTABLE PINTLES OF TURNED STEEL, TAPERED IN RUDDER ARMS, & SCREWED UP TIGHT WITH NUTS & SPLIT PINS, ALL SUPPLIED BY MAKERS. LOCKING HEAD ON TOP PINTLE ONLY.

ARMS TO BE DRILLED FOR 1" DIA RIVETS, COUNTERSUNK ON OUTSIDE OF ARMS. CARE TO BE TAKEN THAT CENTRES OF PINTLES ARE IN LINE, SO THAT THE RUDDER WILL BE A GOOD WORKING FIT, ALSO TO BE SQUARE TO BASELINE.

RUDDER FRAME TO BE FITTED TO ELL POST, OR MADE TO TEMPLATE TAKEN FROM ELL POST. RUDDER PLATE SUPPLIED & FITTED BY SHIPBUILDERS.

ALL MACHINING & DRILLING TO BE DONE BY MAKERS.

FORGING MAKERS TO ARRANGE FOR ANY NECESSARY ADJUSTMENT BEFORE DESPATCHING.

DIMENSIONS SHOULD BE CAREFULLY WORKED TO AS WE ONLY PAY ON WEIGHTS CALCULATED TO THESE DIMENSIONS.

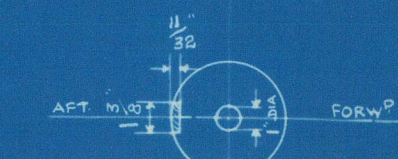
WRITTEN DIMENSIONS ONLY TO BE TAKEN.

ANY ALTERATION TO BE NOTIFIED TO THE F.S.C. LTD.

STEEL TOWING BARGE FOR CARRIAGE OF MOLASSES OR OIL FUEL.
DIMENSIONS - LENGTH B.P. 138'-0" x BREADTH A.P. 30'-0" x DEPTH M.D. 11'-8".
TO CLASS BRITISH CORPORATION B.S. "DUMB BARGE."

AREA OF RUDDER (IMMERSED) FROM BACK OF = 65.59 SQ FT
RUDDER PLATE TO Q OF PINTLES

C OF G AHEAD Q OF PINTLES = 3.06 FT



1" DIA HOLE 2" DEEP, SCREWED TO TAKE EYE-BOLT FOR LIFTING RUDDER HEAD. EYE-BOLT SUPPLIED BY RUDDER MAKERS.

KEYWAY 1 1/8" x 1/2" x 7" LONG.

GREAT CARE IS TO BE TAKEN THAT KEYWAY IS CUT ON A TRUE FORD & AFT LINE.

Scale 1 1/2" = 1 Foot.

No 141. ELL POST.

FORGING.

GREAT CARE TO BE TAKEN THAT CENTRE OF HOLES IN ELL POST GUDGEONS BE BORED TO DIMENSIONS SHOWN, & MUST BE IN A STRAIGHT LINE, ALSO TO BE SQUARE TO BASE LINE.

ELL POST TO BE DRILLED FOR 3/4" DIA RIVETS EXCEPT WHERE OTHERWISE MARKED. NO SHARP EDGES ON FORGING WHERE EXPOSED, CORNERS TO BE ROUNDED OFF. GUDGEONS TO BE FITTED WITH HARDENED STEEL BUSHES, BOTTOM GUDGEON ALSO TO HAVE A HARDENED STEEL BEARING RING.

ALL MACHINING & DRILLING TO BE DONE BY MAKERS.

ALL TO BE MADE TO B.C. REQUIREMENTS & TO BE INSPECTED & PASSED BY THEIR SURVEYOR BEFORE LEAVING MAKERS WORKS.

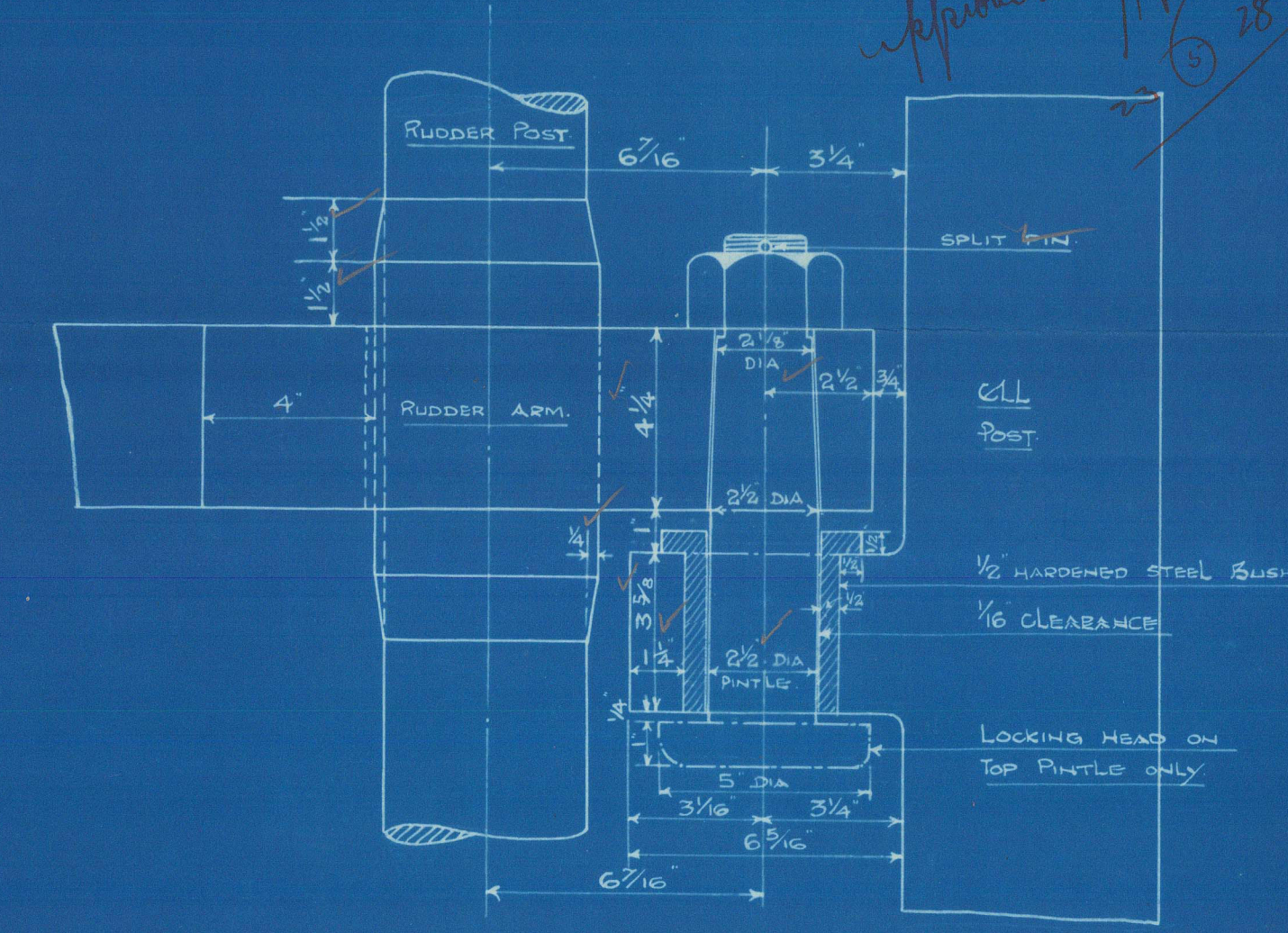
FORGING MAKERS TO ARRANGE FOR ANY NECESSARY ADJUSTMENT BEFORE DESPATCHING.

DIMENSIONS SHOULD BE CAREFULLY WORKED TO AS WE ONLY PAY ON WEIGHTS CALCULATED TO THESE DIMENSIONS.

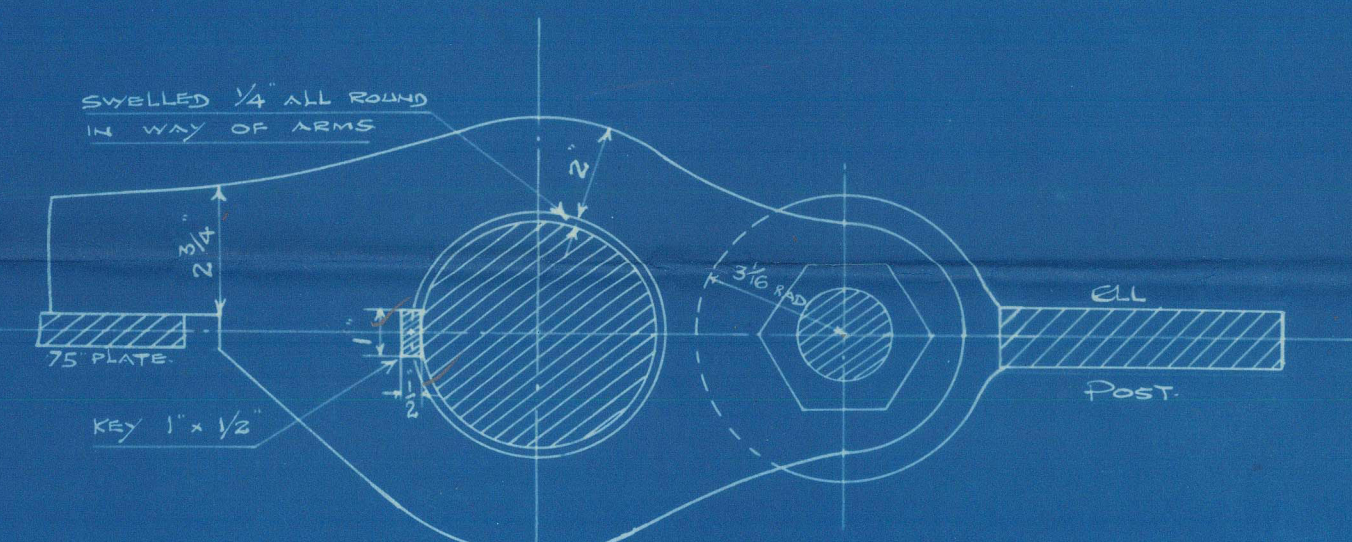
ELL POST MAKERS TO SUPPLY RUDDER MAKERS WITH PARTICULARS OF SPACING OF GUDGEONS, ALSO GAUGE OF PINTLES.

WRITTEN DIMENSIONS ONLY TO BE TAKEN.

ANY ALTERATION TO BE NOTIFIED TO THE F.S.C. LTD.



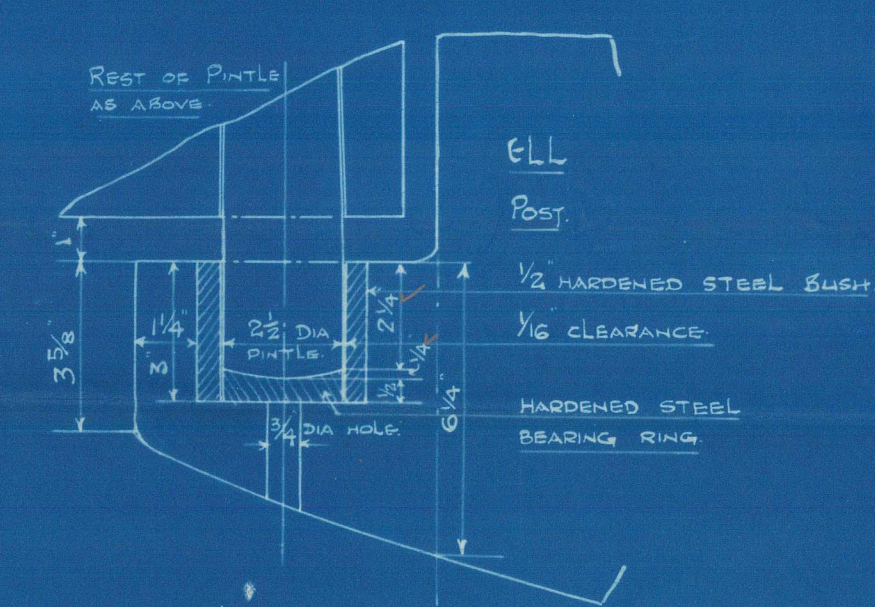
ELEVATION.



PLAN VIEW.

DETAIL OF PINTLES & GUDGEONS "B" & "C".

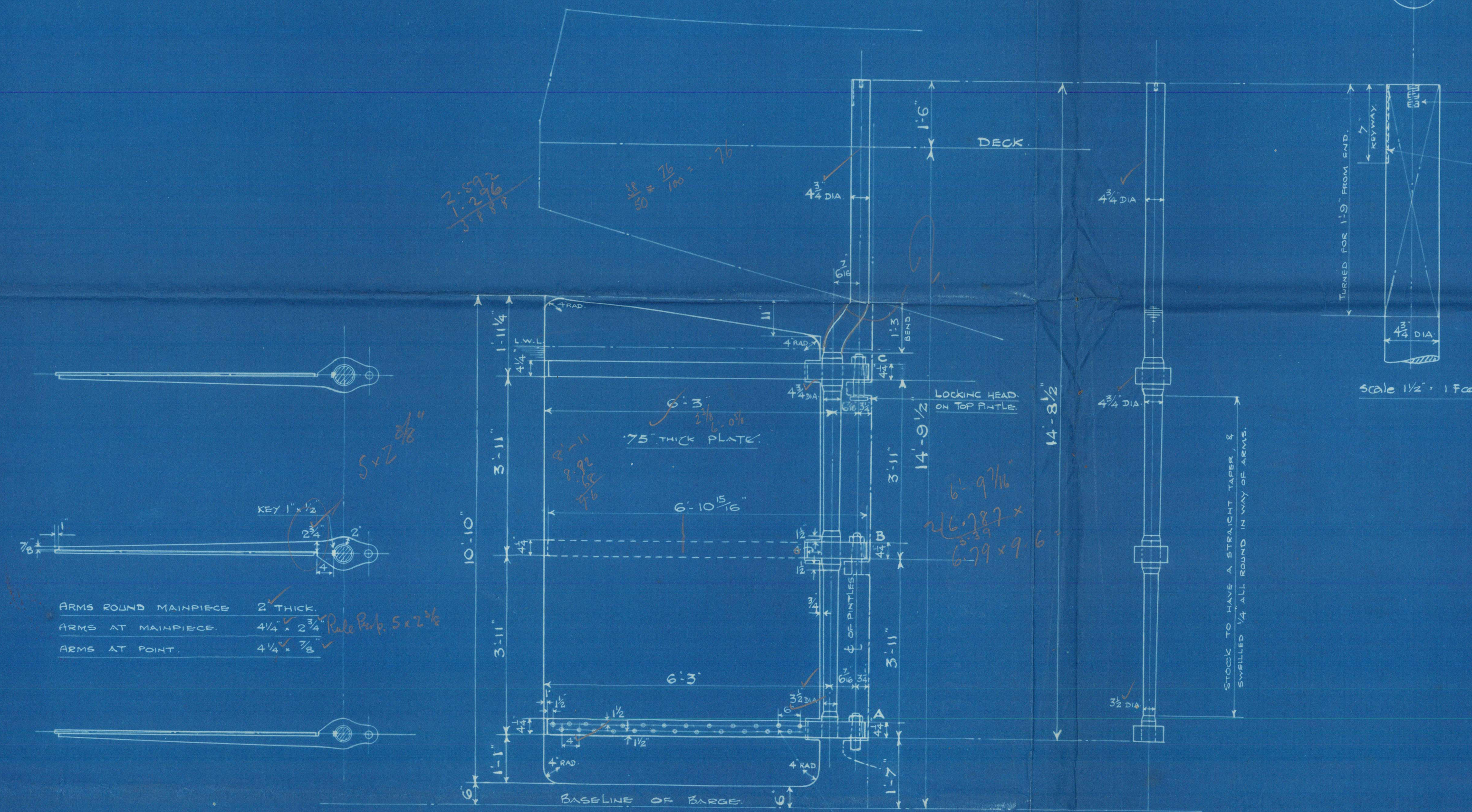
Scale 3" = 1 Foot.



ELEVATION.

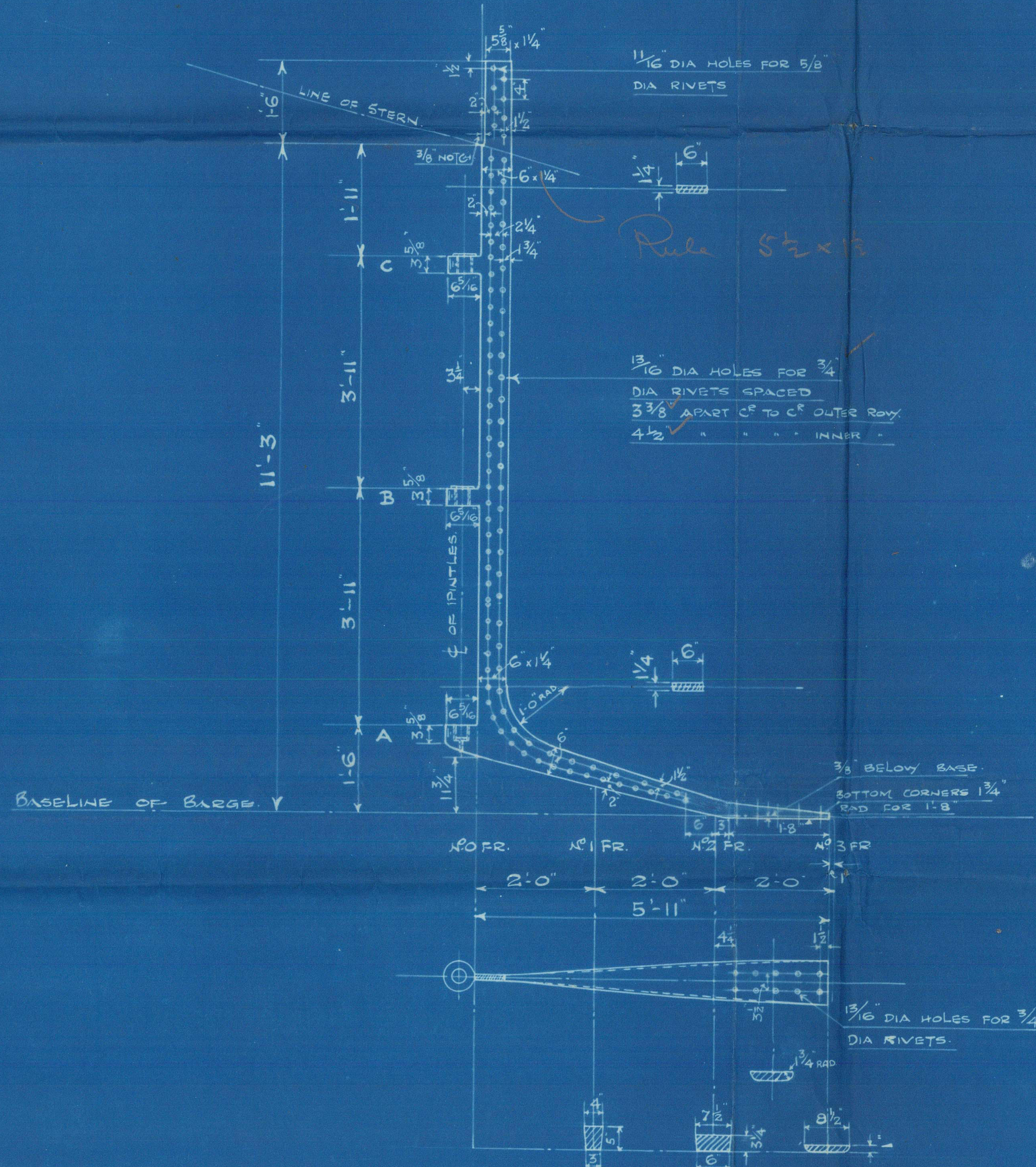
DETAIL OF BOTTOM PINTLE & GUDGEON "A".

Scale 3" = 1 Foot.

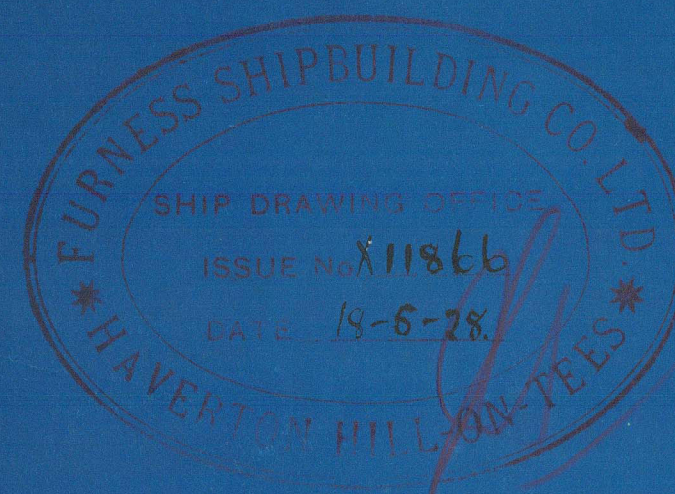


RIVET HOLES IN ARMS 1 1/8" DIA FOR 1" DIA RIVETS. SPACED 6" DIA APART C TO C IN EACH ROW AT INNER END & GRADUALLY CLOSED UP TO 4" DIA AT OUTER END. COUNTERSUNK ON OUTSIDE.

Scale 1 1/2" = 1 Foot.



Scale 1 1/2" = 1 Foot.



No 5.7679.

H

Rudder & Sternpost.

Gurness Sh. Co.

No - 181.

23 - 5 - 28

"Canemola"



© 2021

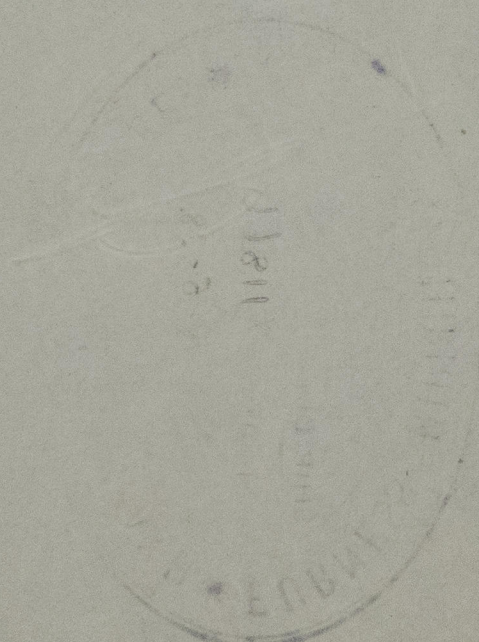
Lloyd's Register
Foundation

010478-010483-0218

Rudder & Sternpost

Jurness 141.

Bag



© 2021

Lloyd's Register
Foundation