

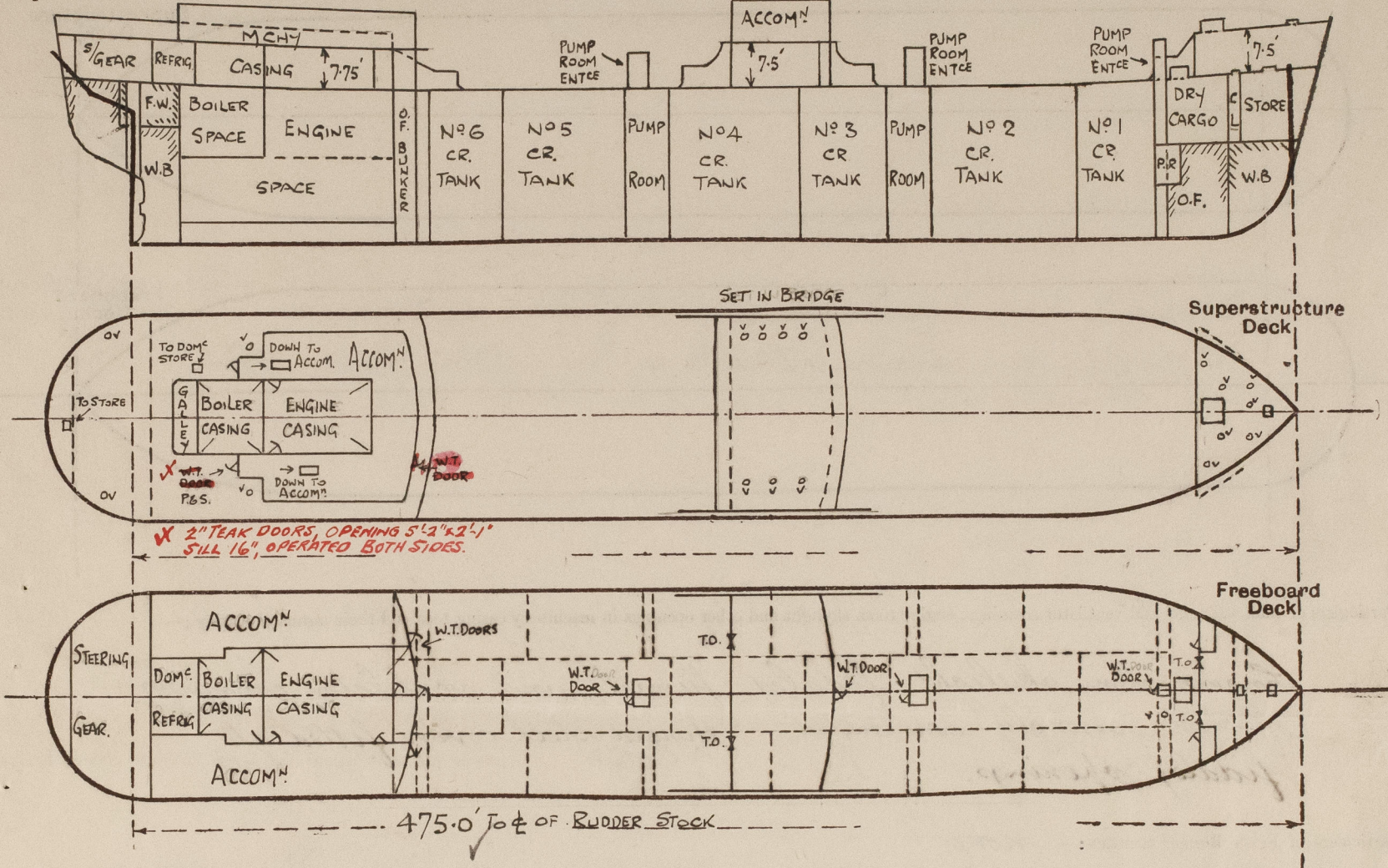
Lloyd's Register of Shipping.
SURVEYS FOR FREEBOARD.
(CONDITIONS OF ASSIGNMENT.)

"MARITZA"

Ship's Name *ex* M.V. "BJØRN STANGE"
Official Number
Nationality and Port of Registry *NORWEGIAN, OSLO*
BULGARIAN, VARNA

Port of Survey *Sunderland*
Surveyor's Signature *R.M. Wilson*
Date of Survey *While building*

Disposition and dimensions of superstructures, trunks, deckhouses and machinery casings to be inserted in the diagrams and tabular statement :-



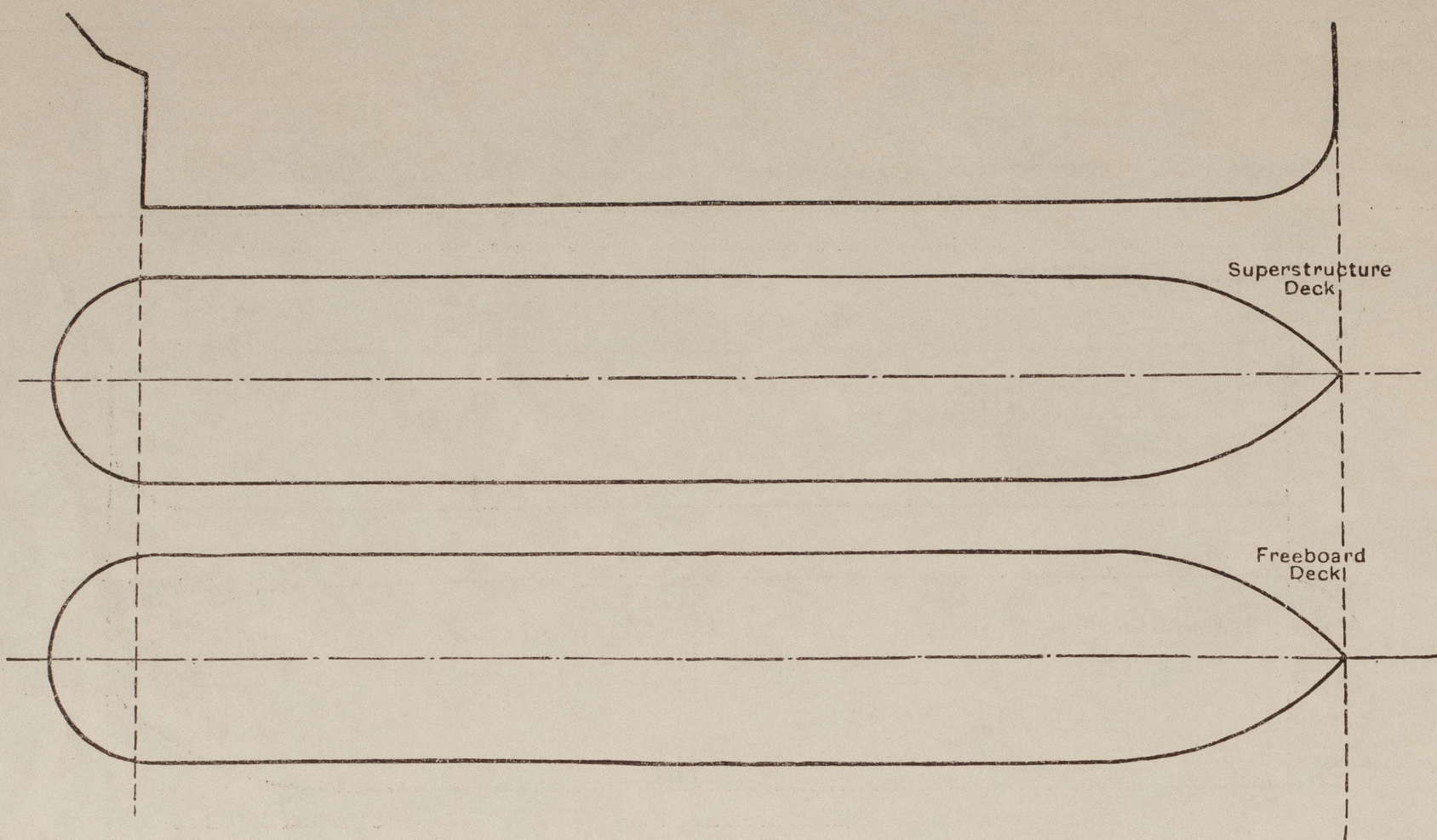
Particulars of Superstructures, Trunks, Casings, Deckhouses.								
	Coaming	Plating	Stiffeners	Spacing	End Attachments of Stiffeners	Size of Openings	Height of Sills	Height of Casings
Poop Bulkhead ...	✓	.44 ✓	10×36-4FL W.T.O.	@ 30"	WELDED AT BTM BKT'S AT TOP	2@5'-0"×2'-3" 1@5'-0"×3'-0"	18" 18"	7'-9" ✓
Raised Quarter Deck Bulkhead ...	✓		VERTICAL WEBS 12×38-3"FL	12'-1"	WELDED			
Bridge, After Bulkhead ...	✓	.30	5×3×26L HORIZ.	@ 30"	BKT'S WELDED	2@4'-1"×3'-1"	18"	7'-6" ✓
Bridge, Forward Bulkhead ...	✓	.44	VERT. WEBS 24×38-3"FL	10'-6"	WELDED AT TOP BKT. AT BTM.	1@5'-0"×2'-3" 2@4'-7"×3'-1"	18" 18"	7'-6" ✓
Forecastle Bulkhead30	.30 ✓	12×38-6FL HORIZ.	30"	BKT. WELDED.	2@5'-1"×2'-1"	18"	
Trunk, Aft ...	✓							
Trunk, Forward ...	✓							
Exposed Machinery Casings on Freeboard or Raised Quarter Decks ...	✓							
Exposed Machinery Casings on Superstructure Decks34	.30	3½×3×28 & 3½×3×40	@ 30"	JOINTER AT BTM	✓	✓	8'-0" ✓
Machinery Casings within Superstructures not fitted with Class I Closing Appliances ...	✓							
Deckhouses on Flush Deck Ships ...	✓							

Particulars of Closing Appliances (state if capable of being manipulated from both sides).

Poop Bulkhead ...	<i>W.Y. hinged steel doors, operated from both sides.</i>
Raised Quarter Deck Bulkhead ...	✓
Bridge, After Bulkhead ...	<i>3" stormboards in full height channels</i>
Bridge, Forward Bulkhead ...	<i>W.Y. hinged steel door, operated from both sides.</i>
Forecastle Bulkhead ...	<i>Hinged steel doors, operated from both sides. 3" stormboards in full height channels.</i>
Exposed Machinery Casings on Freeboard or Raised Quarter Decks ...	✓
Exposed Machinery Casings on Superstructure Decks ...	<i>no opening.</i>
Machinery Casings within Superstructures not fitted with Class I Closing Appliances ...	✓
Deckhouses on Flush Deck Ships ...	✓

PARTICULARS OF PROTECTION TO OPENINGS, ETC.

The following diagrams should be used to indicate the positions of cargo and coaling hatchways, gangway, cargo and coaling ports, ventilators, companionways, etc., which would affect the seaworthiness of the ship:—



Particulars of fiddle, funnel and ventilator coamings, engine room skylight and other openings in machinery casing tops and their means of closing:—

Engine room skylight, fiddle, funnel, and ventilator coamings of steel strongly constructed. Hinged steel covers fitted at fiddle openings.

Particulars of Flush Bunker Scuttles:— none

DECKHOUSE DOORS:— Poop:— W.T. steel door 5'3" x 2'0" - 15" sill
Bridge:— 2' steel door 5'3" x 2'0" - 17" sill
All doors operated from both sides.

Particulars of Companionways:— Forward:— Height 7'6", plating 36, stiff 4x36 W.T.O. spaced 36" at ends 32" at sides, brackets at top, welded to deck. Deck opening 6'6" dia. 1 strong sky-light 4'9" x 3'6". W.T. steel door on after end 4'6" x 2'3" sill 24" door operated from both sides.
Forward Pump Room Entrances:— Height 7'6", length 3'1", breadth 3'0". plating 36 welded to deck, deck opening 3'0" x 2'11". W.T. steel door on after end 4'0" x 2'3" sill 24" door operated from both sides.

Particulars of Ventilators in exposed positions on freeboard and superstructure decks:—

Freeboard deck:— 1-10" dia ventilator coaming 36" x 32" to fore pump room. G.N. Vents on Poop deck 5'6" dia, 30" high to lip.
Poop deck:— 2-6" dia " " 30" x 30" to 5/4 gear
2-6" dia " " 30" x 30" to poop tween decks
1-9" dia " " 30" x 32" to laundry
Bridge deck:— 7-6" dia " " 30" x 30" to bridge tween decks.
Forecastle deck:— 2-6" dia " " 36" x 30" to foils store
2-15" dia " " 36" x 36" " "
2-10" dia " " 36" x 32" " "
1-8" dia " " 36" x 32" " "
Vent coamings fitted with wood plugs and canvas covers.

Particulars of Air Pipes in exposed positions on freeboard, raised quarter, or superstructure decks:—

Forecastle and Poop decks:— Air pipes fitted with G.N. tops 18" high to lip.

Upper deck:— " " " " " " 36" " " "

Air pipes fitted with wood plugs or gauze and canvas covers.

Particulars of Gangway Cargo and Coaling Ports:— none

Bjorn Stange.

Particulars of Scuppers and Sanitary Discharge Pipes:—

Scuppers and sanitary discharges from spaces on or above the upper deck, led overboard through shell and fitted with storm valves.

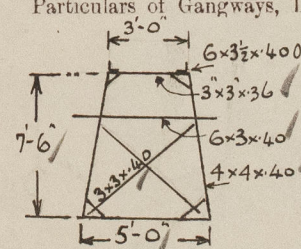
Particulars of Side Scuttles:—

10" and 12" dia sidelights in poop, bridge, and forecastle tween decks, fitted with substantial hinged deadlights.

Vertical distance of Sill of lowest Side Scuttle above top of keel 42'6"

Particulars of Guard Rails:— Forecastle deck:— Rail 3'6" high, 3 rods, stanchions spaced 4 ft apart.
Upper deck:— Rail 3'6" high, 3 rods, stanchions spaced 5 ft apart and steel bulwark (see sketch)
Poop deck:— Steel bulwark 3'8 1/2" high, stay spaced 5 to 6 ft apart
Bridge deck:— Steel bulwark 3'6" high, stay spaced 5 ft apart.

Particulars of Gangways, Lifelines, etc.:— Fore and aft gangway from forecastle to bridge and from bridge to poop 7'6" high above upper deck. Supports spaced approximately 9 ft apart.
Fore and aft bracing 5 ft aft and 6 ft fwd. 5x2 1/2" Yang. Rail 3'6" high 2 rods, stanchions spaced about 4'6" apart.



Particulars of Freeing Arrangements.

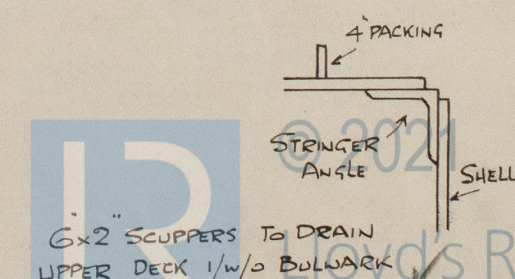
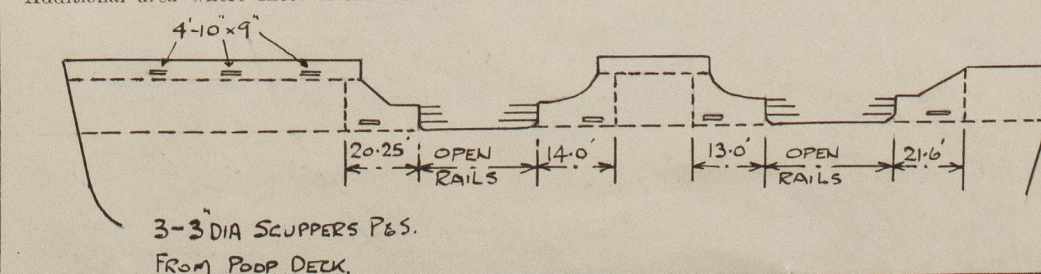
	Length of Bulwark	Height of Bulwark	Size of Freeing Ports	Number each side	Area each side	Rule area each side
FORWARD OF POOP	20.25'	3'-6"	3'-6" x 9"	1		✓
AFTER WELL ...	14.00'	3'-6"	3'-6" x 9"	1		
AFT OF BRIDGE	13.00'	3'-6"	3'-6" x 9"	1		✓
FORWARD OF BRIDGE	21.60'	3'-6"	3'-6" x 9"	1		
AFT OF FORECASTLE						

State position of each freeing port ... (After Well:— ✓ SEE SKETCH)

(F. and A. position and height above deck edge) (Forward Well:— ✓ HEIGHT ABOVE DECK EDGE = 8' ✓)

State whether the freeing ports are fitted with shutters, bars, or rails, and give particulars of such:— ✓

Additional area where sheer is less than standard.



6x2 SCUPPERS TO DRAIN UPPER DECK 1/4" BULWARK

610466-010477-0091

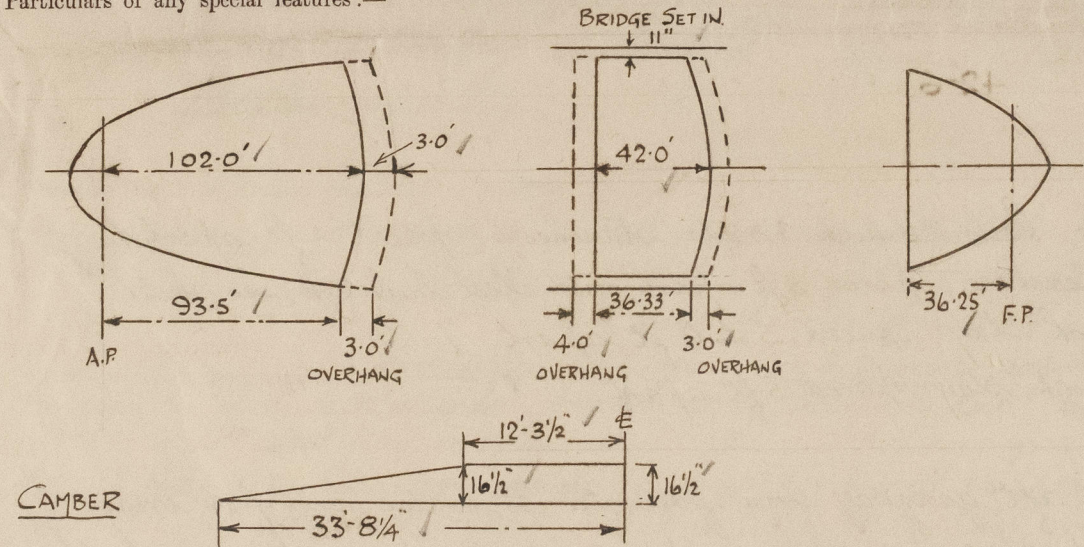
PARTICULARS OF PROTECTION TO OPENINGS, ETC.

HATCHWAYS ON FREEBOARD AND SUPERSTRUCTURE DECKS.											
← FREEBOARD DECK →											
→ FOC'LE DECK → POOP DECK											
Description of Hatchway	...	OIL CARGO HATCHES 20'-OFF	O.F. BUNKER HATCHES 3'-OFF	HATCHES TO C'DAM 8'-OFF	CARGO VENT HATCHES 14'-OFF	HATCH TO DRY CARGO HOLD	TO CHAIN LOCKER	TO FOC'LE STORE	TO FOC'LE TW. DECKS	TO FOC'LE TW. DECKS	TO DOMESTIC STORE
Dimensions of Hatchway	...	4'-1" DIA"	2'-1" DIA"	2'-0" x 1'-6"	1'-7" x 1'-7"	9'-8" x 8'-0"	2'-1" x 2'-0"	4'-0" x 2'-11"	9'-8" x 9'-0"	2'-7" x 2'-1"	2'-7" x 2'-6"
COAMINGS	Height above Deck	32 1/2"	10"	10"	10"	30"	6"	6"	30"	9"	10 1/2"
	Thickness	Sides	40"	40"	40"	40"	40"	40"	40"	40"	44"
		Ends	40"	40"	40"	40"	40"	40"	40"	40"	44"
		Stiffeners	✓	✓	✓	✓	6x3x36 O.A. WELDED	✓	✓	6x3x36 O.A. WELDED	✓
Brackets, Stays	✓	✓	✓	✓	1-3 FL BKT.	✓	✓	1-3 FL BKT.		✓	
HATCH BEAMS	Number										
	Spacing										
	Scantling and Sketch										
FORE AND AFTERS	Number										
	Spacing										
	Unsupported Lengths Scantling* and Sketch										
HATCH COVERS	Material	50" HINGED STEEL COVER		42" HINGED STEEL COVER	50" HINGED STEEL COVER	34" STEEL COVER WITH 5x3x34 O.A. STIFFS W.T.G.	32" HINGED STEEL COVER WITH JOINTING		34" STEEL COVER WITH 5x3x34 O.A. STIFFS W.T.G.	34" HINGED STEEL COVER WITH JOINTING	
	Thickness	WITH JOINTING	do	WITH JOINTING	WITH JOINTING	WITH JOINTING	do		WITH JOINTING	WITH JOINTING	do
	How fitted	JOINTING	do	JOINTING	JOINTING	JOINTING	do		JOINTING	JOINTING	do
Bearing Surface											
Spacing of Cleats	...	6 SECURED BY 10	6	6 SECURED BY 6	6 SECURED BY 8	SECURED BY TOGGLES @ 24 APART	6 SECURED BY TOGGLES		SECURED BY TOGGLES AT 24	6 SECURED BY TOGGLES	
Number of Tarpaulins	...	TOGGLES	TOGGLES	TOGGLES	TOGGLES	TOGGLES	TOGGLES		TOGGLES	TOGGLES	
*Are wood fore and afters steel shod at all bearing surfaces? ✓ Are battens and wedges efficient and in good condition? ✓ Are tarpaulins in good condition and in accordance with rule requirements? ✓ Are lashings provided in accordance with rule requirements? ✓											

ACCESS HATCH ON HATCH COVER TO DRY CARGO HOLD FORD 2'-7" x 2'-1" ✓
6x40" COAMING 34" HINGED STEEL COVER SECURED BY TOGGLES. ✓

HATCH ON POOP DECK TO AFTER STORE 2'-7" x 2'-0" COAMING 10" x 44" 34" HINGED STEEL COVER SECURED BY TOGGLES. ✓

Particulars of any special features:—



Endorsement at first survey and at surveys for renewal of Certificate:—

The fittings and appliances are in accordance with the particulars shown on this form (or as now modified) and are in good condition.