

Lloyd's Register of Shipping.

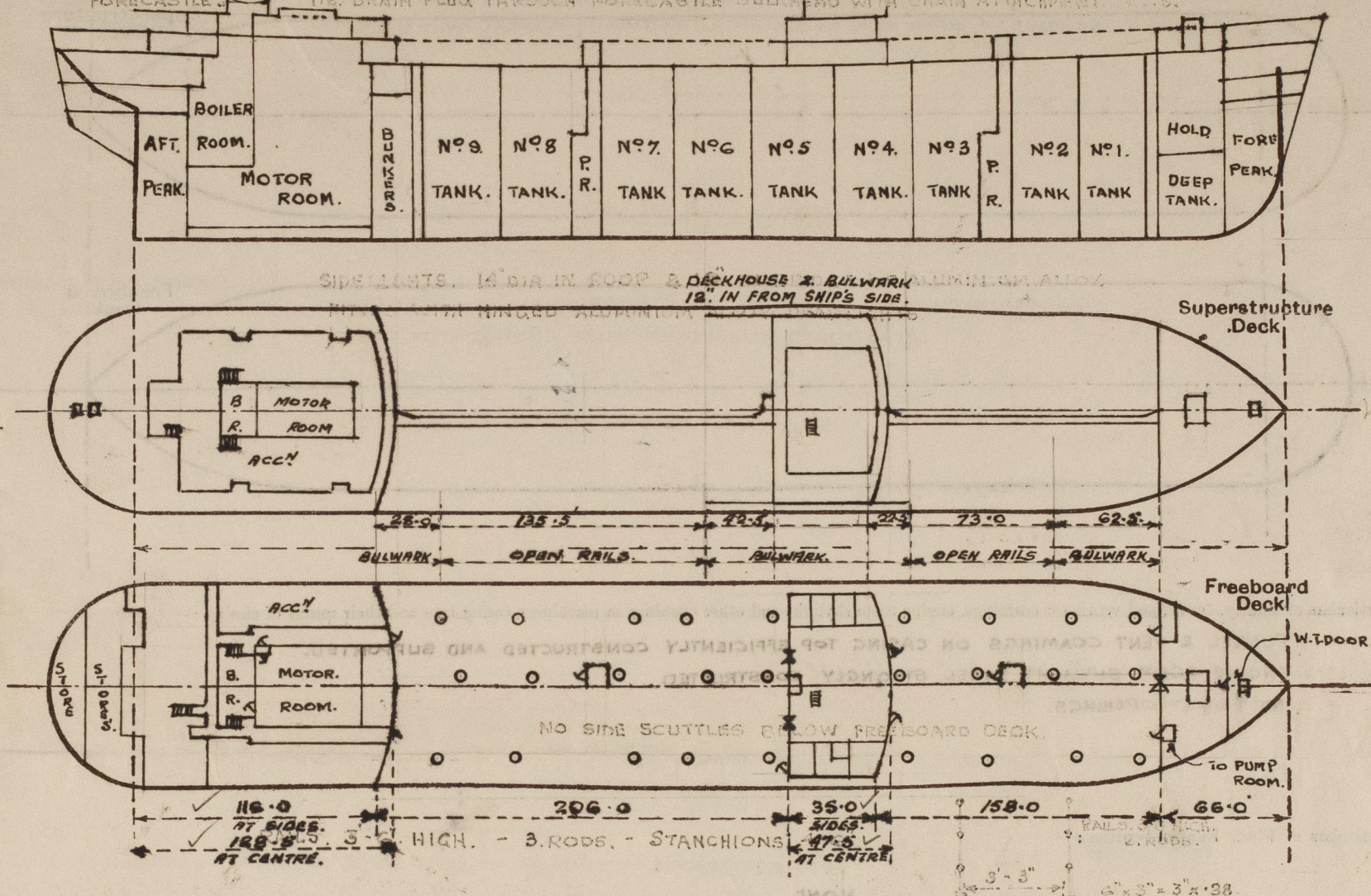
SURVEYS FOR FREEBOARD. 01 APR 1951

(CONDITIONS OF ASSIGNMENT.)

DONNAMARIA

Ship's Name **BOLLSTA** Port of Survey **GLASGOW**
 Official Number **33 2 25** Surveyor's Signature **George Fullerton**
 Nationality and Port of Registry **NORWEGIAN. Oslo** Date of Survey **WHILST BUILDING.**

Disposition and dimensions of superstructures, trunks, deckhouses and machinery casings to be inserted in the diagrams and tabular statement:—



Particulars of Superstructures, Trunks, Casings, Deckhouses

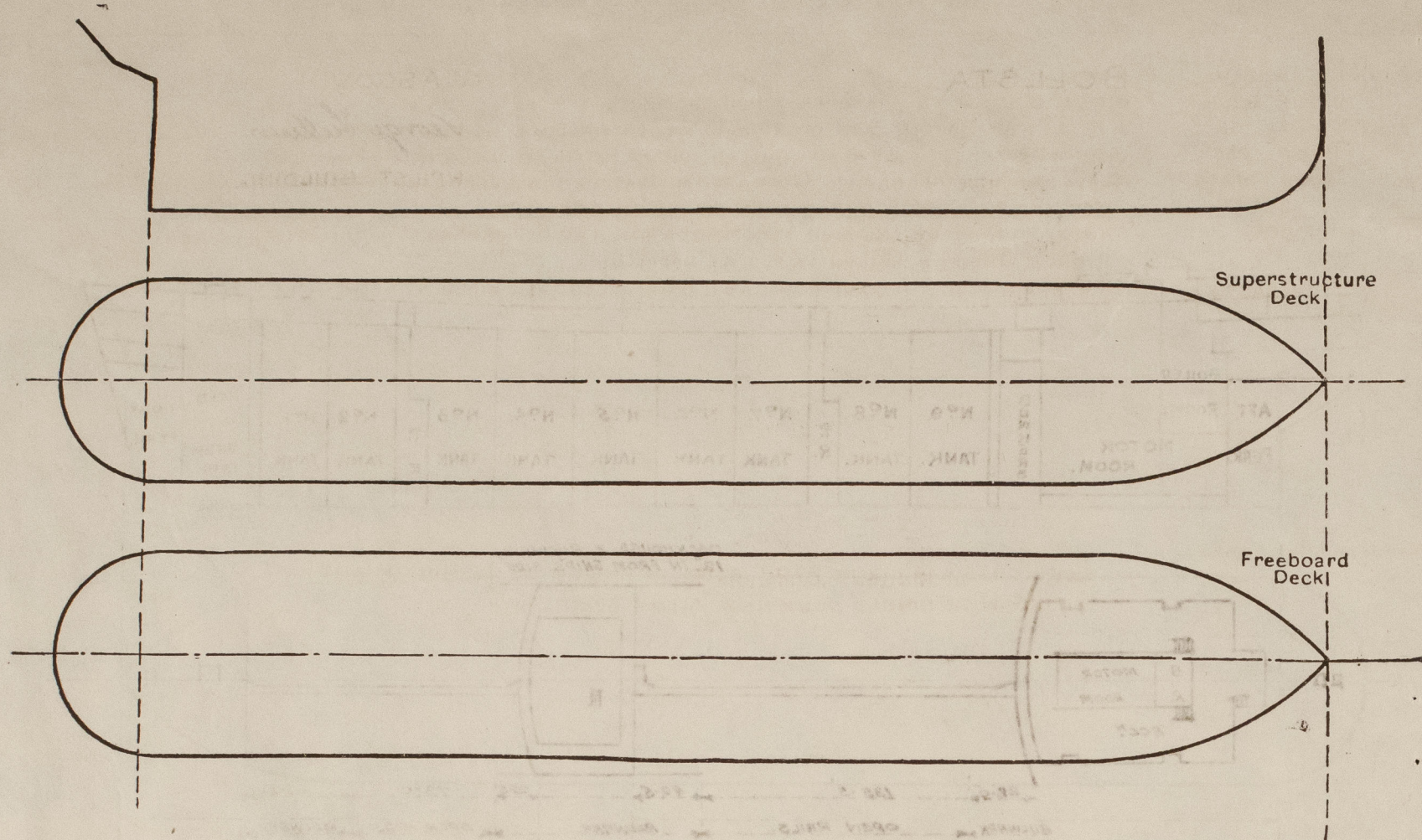
	Coaming	Plating	Stiffeners	Spacing	End Attachments of Stiffeners	Size of Openings	Height of Sills	Height of Casings
Poop Bulkhead	44	10" x 4" x .50 O.A.T.W.	30"	WELDED.	2. @ 5'-0" x 2'-6"	18"	8'-0"
Raised Quarter Deck Bulkhead	SUPPORTS 7' 6" APART WITH DIAGONAL F.R.A. STAYS	10. 5'-0" x 2'-6"
Bridge, After Bulkhead	30	4" x 3" x .40 O.A.T.W.	30"	WELDED.	5. 3 x 2'-1"	19"	8'-0"
Bridge, Forward Bulkhead	42	10" x 3 1/2" x .56 BULB ANGLE.	30"	WELDED.	2. @ 5'-0" x 2'-6"	19"	8'-0"
Forecastle Bulkhead	30	3" x 2 1/2" x .24 O.A.T.W.	30"	WELDED.	T.O. 5'-1" x 4'-1"	18"	8'-0"
BRIDGE SIDES, Trunk, Aft	38	6" x 3" x .48 O.A.	30"	BRACKETS: TOP WELDED. AT BOT.	W.T. DOOR 5'-0" x 2'-6"	...	8'-0"
Trunk, Forward
Exposed Machinery Casings on Freeboard or Raised Quarter Decks
Exposed Machinery Casings on Superstructure Decks
Machinery Casings within Superstructures not fitted with Class I Closing Appliances ...	42.6	25	3 x 2 1/2" x .28	30"	BKTS. AT TOP OVERLAPS DECK BAR AT BOTTOM.	5'-0" x 2'-6"	18"	8'-3 1/2"
Deckhouses on Flush Deck Ships	40	6" x 3" x .34 O.A.T.W.	27" F.R.A. ENDS 34" SIDES.	WELDED T.B.	10. 4'-6" x 2'-6"	24"	7'-6"

Particulars of Closing Appliances (state if capable of being manipulated from both sides).

Poop Bulkhead ...	2. HINGED W.T. DOORS. MANIPULATED BOTH SIDES.
Raised Quarter Deck Bulkhead
Bridge, After Bulkhead ...	PORTABLE STEEL PLATES. SECURED BY HOOK BOLTS. 1. HINGED STEEL DOOR. O.B.S.
Bridge, Forward Bulkhead ...	2. HINGED. W.T. DOORS. MANIPULATED BOTH SIDES.
Forecastle Bulkhead ...	PORTABLE STEEL PLATE SECURED BY HOOKS. 1. W.T. DOOR. 1. STEEL DOOR. M.B.S.
Exposed Machinery Casings on Freeboard or Raised Quarter Decks
Exposed Machinery Casings on Superstructure Decks
Machinery Casings within Superstructures not fitted with Class I Closing Appliances ...	1. HINGED STEEL DOOR. MANIPULATED BOTH SIDES.
Deckhouses on Flush Deck Ships ...	1. HINGED W.T. DOOR AT AFT END OF EACH HOUSE. MANIPULATED BOTH SIDES.

PARTICULARS OF PROTECTION TO OPENINGS, ETC.

The following diagrams should be used to indicate the positions of cargo and coaling hatchways, gangway, cargo and coaling ports, ventilators, companionways, etc., which would affect the seaworthiness of the ship :—



Particulars of fiddley, funnel and ventilator coamings, engine room skylight and other openings in machinery casing tops and their means of closing :—

FUNNEL & VENT COAMINGS ON CASING TOP EFFICIENTLY CONSTRUCTED AND SUPPORTED.

ENGINE ROOM SKYLIGHT, STEEL, STRONGLY CONSTRUCTED.

NO FIDDLEY OPENINGS.

Particulars of Flush Bunker Scuttles :—

NONE.

Particulars of Companionways:— BRIDGE DECKHOUSE ENCLOSING LADDERWAY TO BRIDGE SPACE. PLATING. FRONT '38. END 2 SIDES. -30 STIFF^{RS}. FRONT 6"x3"x48 @30" ENDS. 2 SIDES. 4"x3"x38 @ 30. SOLID WOOD DOORS AT AFT END
5'3"x27". SILLS. 15" O.B.S.

POOP DECKHOUSE ENCLOSING LADDERWAYS TO POOP SPACE. PLATING:- ENDS .30 SIDES .28.
STIFF^{RS}:- FRONT, 5" x 2 1/2" x 30. B.A. @ 30" END 2. SIDES, 5" x 3" x 30. O.A. @ 30"
SOLID WOOD DOORS. SILLS. 21" ABOVE STEEL DECK. O.B.S.

SOLID WOOD DOORS. SILLS. 21" ABOVE STEEL DECK. O.B.S.

Particulars of Ventilators in exposed positions on freeboard and superstructure decks :—

FORECASTLE DECK.

2 @ 12" DIA.	COAMINGS.	36" x 34.	TO LOWER TWEEN DECKS.	✓
3 @ 10" "	"	36" x 32	" UPPER " "	✓
2 @ 8 "	"	36" x 30	" FORE PEAK STORE.	✓
5 @ 6 "	"	36 x 30	" FO'CLE. TWEEN DECKS & FORWARD PUMP ROOM.	✓

LOWER BRIDGE DECK.

9 @ 6" DIA.	COAMINGS.	30" x 30	TO BRIDGE TWEEN DECKS.	✓
-------------	-----------	----------	------------------------	---

POOP DECK.

2 @ 8" DIA.	COAMINGS	30" x 30	TO STEERING GEAR	✓
2 @ 6" "	"	30" x 30	" STORES.	✓

PUMP ROOMS.

4 @ 24" DIA.	COAMINGS.	15'-0" x 40	FITTED WITH 3 BRACKETS. TO DECK.	✓
--------------	-----------	-------------	----------------------------------	---

CLOSING APPLIANCES. - WOOD PLUGS & CANVAS COVERS. ✓

Particulars of Air Pipes in exposed positions on freeboard, raised quarter, or superstructure decks :—

1. AT CENTRE.	2 1/2"	TO F.W. TANK IN STERN
1. P. & 1. S.	2 1/2"	" " " " "
1. P.	4"	" " RUDDER TRUNK.
1. P. & 1. S.	3"	" " AFT PEAK.
4. P. & 4. S.	2 1/2"	" " F.W. TANKS.
1. P. & 1. S.	2 1/2"	" " F.W. D.B. TANK.
2. P. & 2. S.	2 1/2"	" " D.B. COFFERDAM.
2. P. & 2. S.	4"	" " D.B. OIL FUEL TANKS.
3. P.	4"	" " LUB. OIL TANK
G.	4"	" " OIL FUEL BUNKERS.

1.P. 2. 1.S. 3". DIA. TO AFT COFFERDAM.
1.P. 2. 1.S. 3" " " FORD " "
1.P. 2. 1.S. 5" " " FORD DEEP TANKS.
1. 4" " " FORE PEAK.

CARGO TANK AIR PIPES. LED INTO 6" COMMON
MAIN UP MASTS. ✓
AIR PIPES TO OIL TANKS FITTED WITH HODDS, GAUZE.
AND CANVAS COVERS.
AIR PIPES TO WATER TANKS FITTED WITH WOOD
PLUGS. AND CANVAS COVERS. ✓

Particulars of Gangway Cargo and Coaling Ports:—

NONE.

Particulars of Scuppers and Sanitary Discharge Pipes :—

UPPER DECK. G.P. 2. G.S. 6" x 2" THROUGH STRINGER ANGLE. ✓
" " 1. P. 2. I.S. 4" DIA. LED OVERBOARD. UNDER FREEBOARD DECK WITH OPEN ENDS. ✓
POOP DECK. 3. P. & 3.S. LED OVERBOARD UNDER FREEBOARD DECK WITH OPEN ENDS. ✓
POOP SPACE. SCUPPERS, AND DISCHARGES FROM ACCOMMODATION LED OVERBOARD UNDER FREEBOARD DECK AND FITTED WITH NON-RETURN VALVES ON SHIP'S SIDE. ✓
BRIDGE. DISCHARGES FROM MIDSHIP ACCOMMODATION LED OVERBOARD 3'-0" BELOW FREEBOARD DECK WITH NON-RETURN VALVES AT UPPER DECK.
FORECASTLE. 1½" DRAIN PLUG THROUGH FORECASTLE BULKHEAD WITH CHAIN ATTACHMENT. P.2.S. ✓

Particulars of Side Scuttles:—

SIDELIGHTS. 14" DIA IN POOP & 12" IN BRIDGE OF ALUMINIUM ALLOY.
FITTED WITH HINGED ALUMINIUM ALLOY DEADLIGHTS.

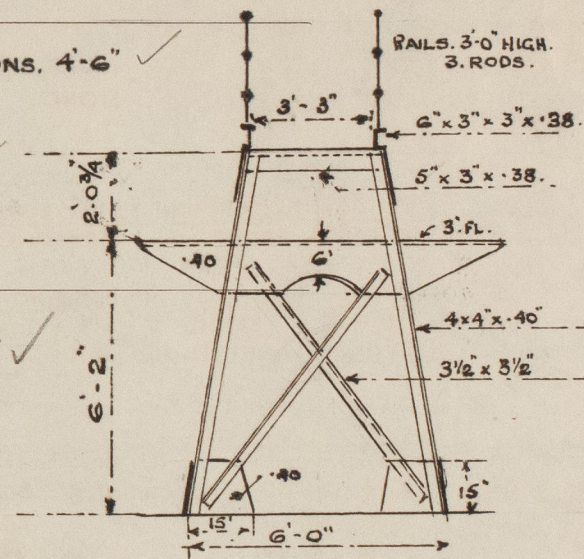
Vertical distance of Sill of lowest Side Scuttle above top of keel..... NO SIDE SCUTTLES BELOW FREEBOARD DECK.

Particulars of Guard Rails:— RAILS, 3'-6" HIGH. - 5. RODS. - STANCHIONS, 4'-6" ✓

GANGWAY POOP TO BRIDGE.
& BRIDGE TO FO'C'LE

Particulars of Gangways, Lifelines, etc. :—

SUPPORTS 7'-6" APART.
WITH DIAGONAL F.B.A STAYS
ON ALTERNATE SPACERS:



Particulars of Freeing Arrangements.

	Length of Bulwark	Height of Bulwark	Size of Freeing Ports	Number each side	Area each side	Rule area each side
After Well	FORE END. 42'-6" AFT. END. 28'-0"	3'-7"	3'-0" x 6" 3'-0" x 15"	ONE ONE.	—	—
Forward Well	FORE END 62'-6" AFT. END. 22'-6"	3'-7"	3'-0" x 15" 3'-0" x 6"	TWO, ONE.	—	—

State position of each freeing port ... (After Well :— POOP BHD. 28'-0" OPEN RAILS 135'-5" 42'-0" BRIDGE END.
(F. and A. position and height above deck edge) Forward Well :— BRIDGE FRONT. 22'-5" OPEN RAILS 73'-0" 62'-5" F.O.C.E. BHD.

State whether the freeing ports are fitted with shutters, bars, or rails, and give particulars of such:—**FREING PORTS, 3'0" x 16", FITTED WITH 3 VERTICAL RODS.**
1" DIA.

Additional area where sheer is less than standard.

PARTICULARS OF PROTECTION TO OPENINGS, ETC.

HATCHWAYS ON FREEBOARD AND SUPERSTRUCTURE DECKS.										
			UPPER DECK.			FORECASTLE DECK.		POOP DECK.		
Description of Hatchway	CARGO OIL TANK HATCHES. 27. OFF.	FORE. PEAK.	MANHOLES. BUNKERS & COFFERDAMS	FORE HOLD.	FO'CLE TWEEN DECKS.	A.P. STORE.	POOP. STORE	
Dimensions of Hatchway	4'-0" DIA.	2'-6" x 2'-6"	11. OFF.	9'-0" x 10'-0"	3'-6" x 3'-6"	2'-6" x 2'-6"	3'-0" x 3'-0"	
COAMINGS	{	Height above Deck	30"✓			30"✓		2'-6" x 2'-6"	3'-0" x 3'-0"	
		Thickness	.75"✓	9 x 3 1/2 x .44	7"✓	.44"✓	9 x 3 1/2 x .44.	9 x 3 1/2 x .44.	9 x 3 1/2 x .44.	
		Sides		BULB.✓	7 x 3 1/2 x .50		BULB.	BULB.	BULB.	
		Ends		ANGLE.	O.R.-T.W.	6 x 3 x .32.	ANGLE.	ANGLE.	ANGLE.	
		Stiffeners								
		Brackets, Stays	✓							
HATCH BEAMS	{	Number								
		Spacing								
		Scantling and Sketch								
		Bearing Surface	✓	✓	✓	TRUNK IN FO'CLE TWEEN DECKS.	✓	✓	✓	
FORE AND AFTERS	{	Number								
		Spacing								
		Unsupported Lengths	✓	✓	✓					
		Scantling* and Sketch								
		Bearing Surface				✓	✓	✓	✓	
HATCH COVERS	{	Material	STEEL.	STEEL.		STEEL.	STEEL.	STEEL.	STEEL.	
		Thickness	.50	.44.		.46.	.44.	.44.	.44.	
		How fitted	HINGED		✓	W.T. COVER.	W.T. COVER.	W.T. COVER.	W.T. COVER.	
		Bearing Surface	O.T.	W.T.		STIFF AS 6 x 3 1/2 x 1/4 @ 30"				
Spacing of Cleats								
Number of Tarpaulins		6. TOGGLES.		TOGGLES. 15" APART.	8. TOGGLES.	6. TOGGLES.	8. TOGGLES.	
<div>*Are wood fore and afters steel shod at all bearing surfaces?</div> <div>Are battens and wedges efficient and in good condition?</div> <div>Are tarpaulins in good condition and in accordance with rule requirements?</div> <div>Are lashings provided in accordance with rule requirements?</div> <div>✓</div>										

Particulars of any special features ~~44~~ 195

12 1/2" DIA. OPENINGS IN UPPER DECK TO EACH CARGO TANK FOR BUTTERWORTH CLEANING.
SYSTEM CLOSED BY 3/4" PLATE. SECURED BY 3/4" BOLTS. 4 3/4" APART.

POOP DECKHOUSE ENCLOSING LADDERWAYS TO BRIDGE SPACE. PLATING: FRONT -38, END & SIDES -20
STIFFS:- FRONT, 6"x3"x38 @ 30" ENDS & SIDES, 4"x3"x38 @ 30". SOLID WOOD DOORS AT AFT END
413"x27". SALLS, 15" O.B.S.

POOP DECKHOUSE ENCLOSING LADDERWAYS TO POOP SPACE. PLATING:- ENDS -30 SIDES -23.
STIFFS:- FRONT, 5"x3/2"x30, B.A. @ 30" END & SIDES, 5"x3"x30. O.A. @ 30"
SOLID WOOD DOORS. SALLS, 21" ABOVE STEEL DECK. O.B.S.

Endorsement at first survey and at surveys for renewal of Certificate :—

The fittings and appliances are in accordance with the particulars shown on this form (or as now modified) and are in good condition.

TO. E.W. TANK IN STERN

11.

1. R. 2. I. S. 3. D. R. TO APT COFFERDAM.

DB 12. 1-5: 1-5" 1-5" Fog?

1. P. 2 I.S. 5. 1. Ford Deep Tanks