

No 1010. MIDSHIP SECTION.

DIMENSIONS LENGTH 31' 480' BEEOTH 11' 61' DEPTH 11' 35' 9' TO UNICE DE

SCALE 1/25

LLOYD 100 A1 CLASS SPEC DEC.

AND REGISTERED NAZIONALE ITALIANO * CLASS

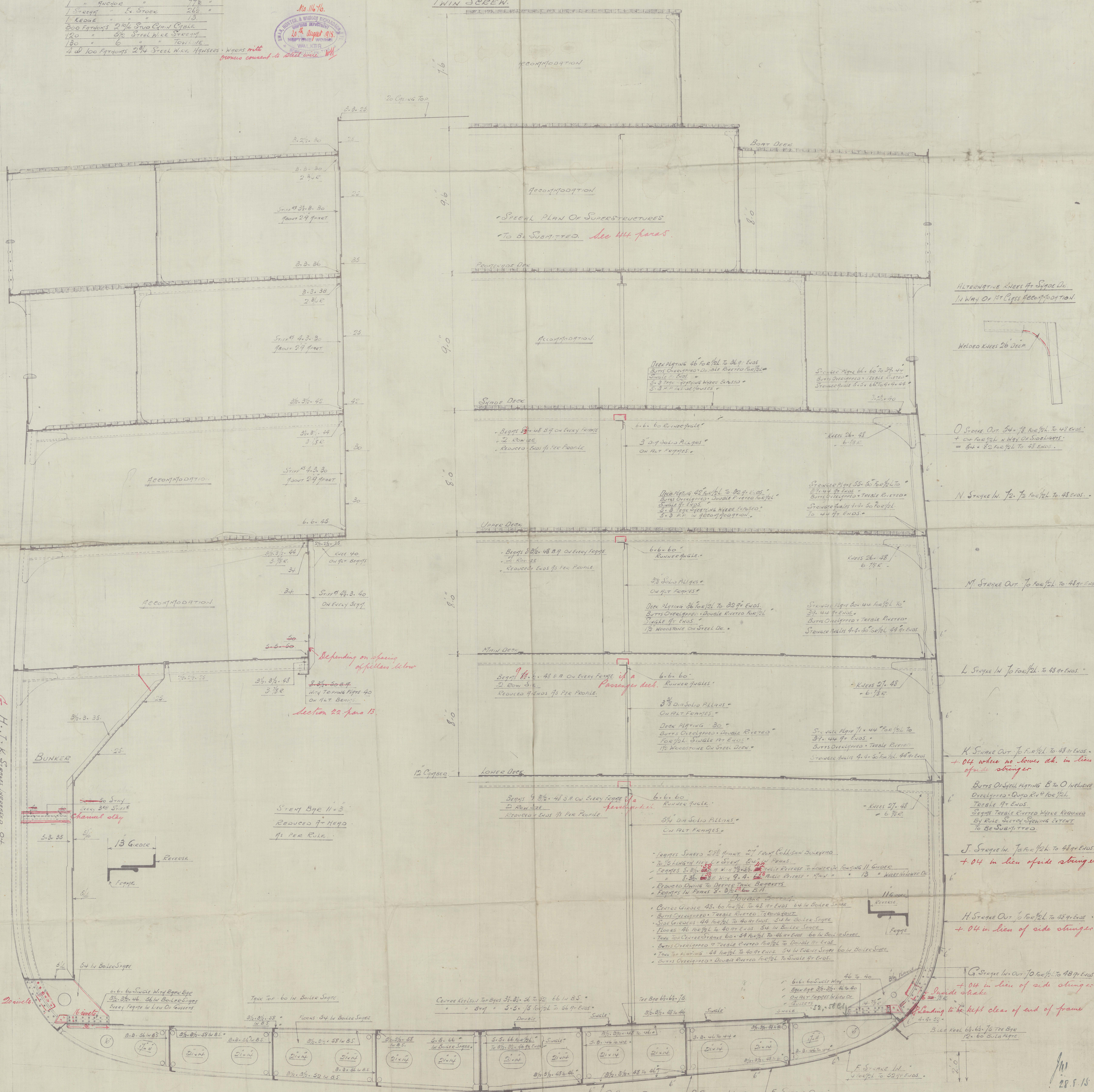
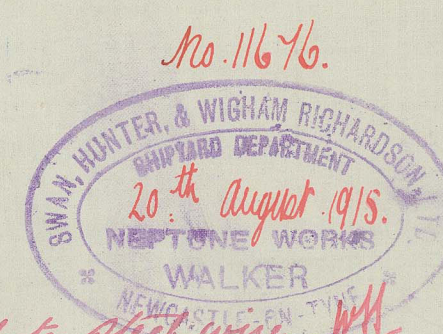
APPROXIMATE UNDER DECK TONNAGE TO UPPER DECK = 3,20

TWIN SCREW.

NUMERALS	
BREADTH M/P	61.00
DEPTH	33.15
TRANSVERSE IN	96.15
LENGTH P.P. (WHEELS CENTER TO CENTER)	430.00
LONGITUDINAL NO	46440.00
L - D TO STAGE DE	10.9
D	19.7
D - KEEEL NO LOWER DE	23.7

EQUIPMENT NUMBER	
LONGITUDINAL NO	1480
TO STAGE DE - 1ST CHANGING	2662
TO PEENTH DE - 12.5	12.5
TO BOTT DE	1016
HOUSE	322
PARCEMENT	52107

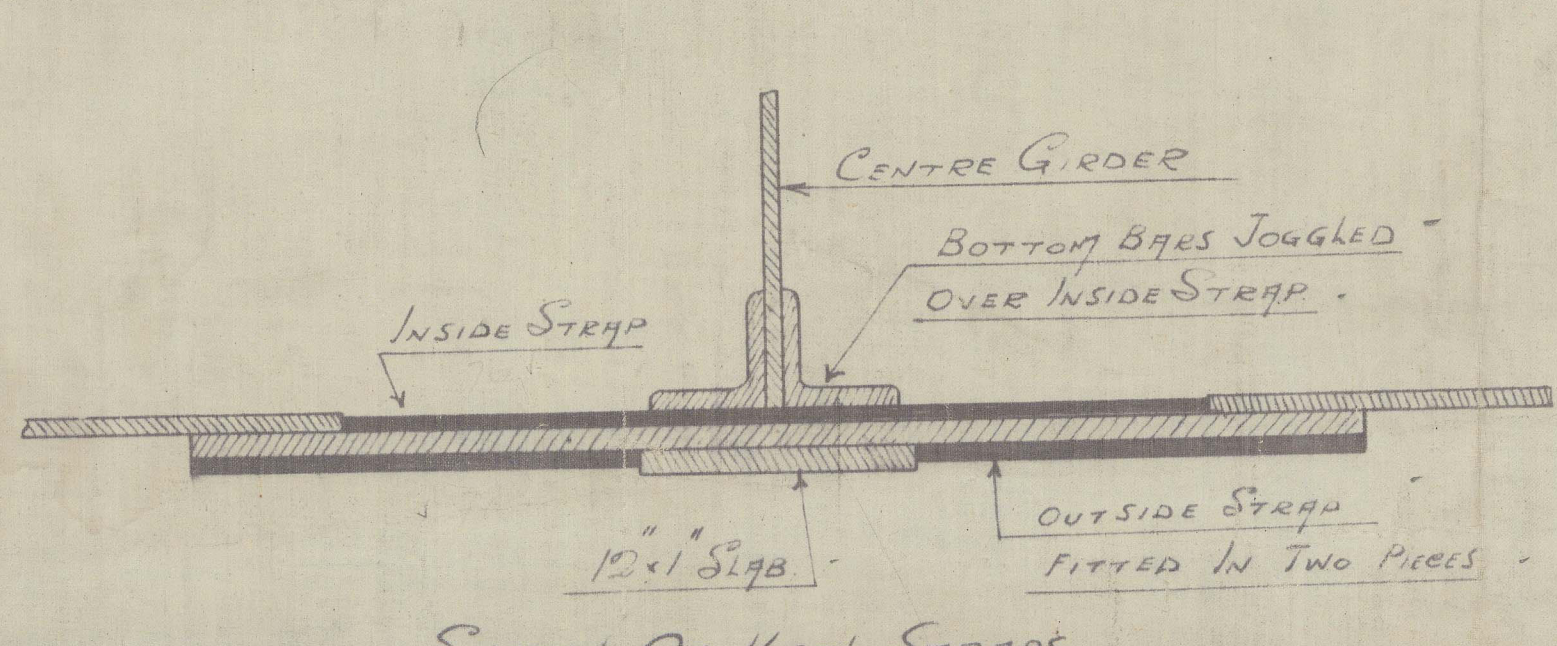
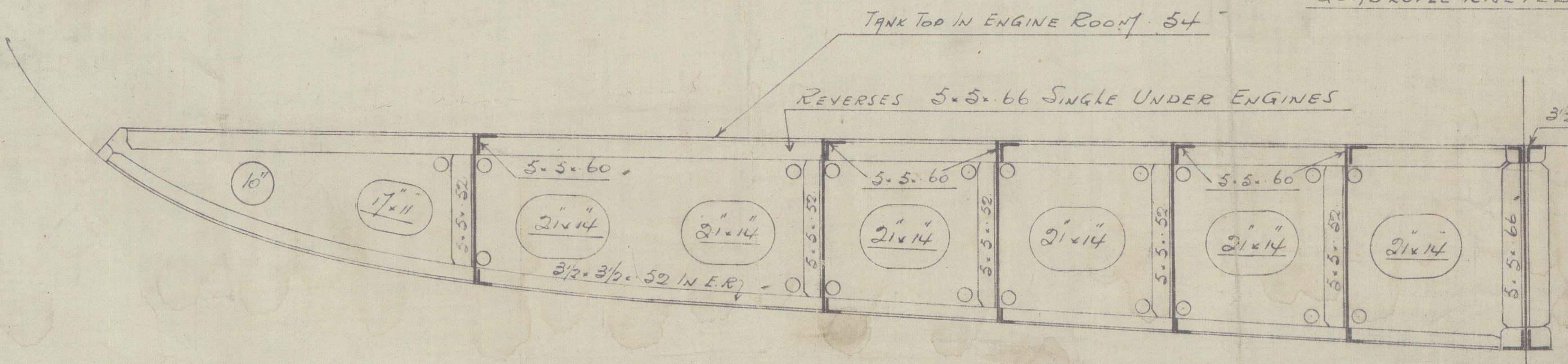
EQUIPMENT	
2 BUNKER RIGID STEEL	40 CUBIC FEET
1 BUNKER	47.5
1 STAGE	26.5
1 LEAD	13
800 FEET 2 1/4 IN. STEEL PIPE	2 1/4
120 " 3/4 IN. STEEL PIPE	3/4
130 " 6 IN. STEEL PIPE	6
4 1/2 IN. STEEL PIPE	2 1/2



SECTION THRO' BOILER ROOM.

SECTION THRO' HOLDS

NOTE: RIVETS THRO' FRAMES TO SHELL



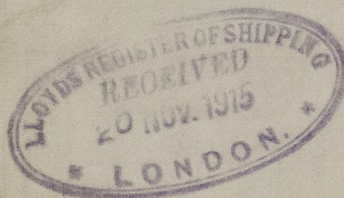
RIVETS CONVERTING FRAMES REVERSE
1/2 IN. SLOPED 6 IN. 1/2 HOLES

SECTION THRO' ENGINE ROOM

SKETCH OF KEEL STEPS

U80 1010

midship section
as
approved by Lloyd's
2878715-



Designed for Espinosa & Co.
Havana
"Alfonso XIII"
Blo 6279.

Calcedo



© 2021

Lloyd's Register
Foundation

010461-010465-0062