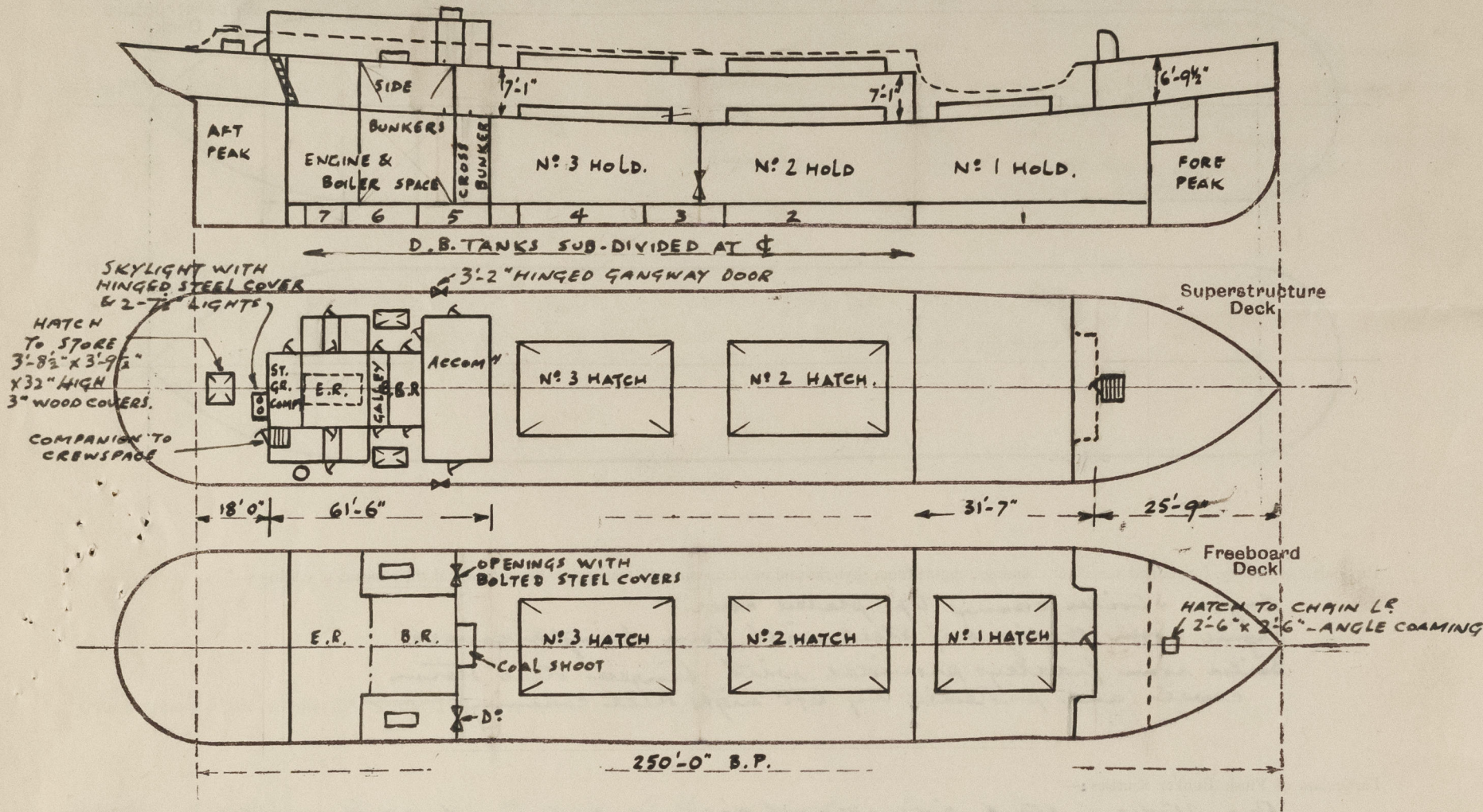


Lloyd's Register of Shipping.  
SURVEYS FOR FREEBOARD.  
(CONDITIONS OF ASSIGNMENT.)

Ship's Name "EMPIRE CONFEDERATION" (ex "ELBE") Port of Survey Hull  
Official Number 180614 Surveyor's Signature J. L. Beasley.  
Nationality and Port of Registry British - London. Date of Survey 16.7.45

Disposition and dimensions of superstructures, trunks, deckhouses and machinery casings to be inserted in the diagrams and tabular statement :--



Particulars of Superstructures, Trunks, Casings, Deckhouses.

	Coaming	Plating	Stiffeners	Spacing	End Attachments of Stiffeners	Size of Openings	Height of Sills	Height of Casings
Poop Bulkhead ... ..								
Raised Quarter Deck Bulkhead ... ..								
Bridge, After Bulkhead ... ..								
Bridge, Forward Bulkhead ... ..	✓	.27"	7 1/2" x 3" x 40" BA.	30"	18" x 40" BKTS. TOP & BOTTOM	✓	✓	✓
Forecastle Bulkhead ... ..	✓	.25"	3" x 2" x 25"	24"	6" x 25" BKTS. TOP & BOTTOM	4'-9" x 2'-0"	16"	✓
Trunk, Aft ... ..								
Trunk, Forward ... ..								
Exposed Machinery Casings on Freeboard or Raised Quarter Decks ... ..								
Exposed Machinery Casings on Superstructure Decks ... ..	18" x 38"	.25	3" x 2" x 25"	28	NONE	4'-9" x 2'-0"	18"	.
Machinery Casings within Superstructures not fitted with Class I Closing Appliances ... ..								
Deckhouses on Flush Deck Ships ... ..								

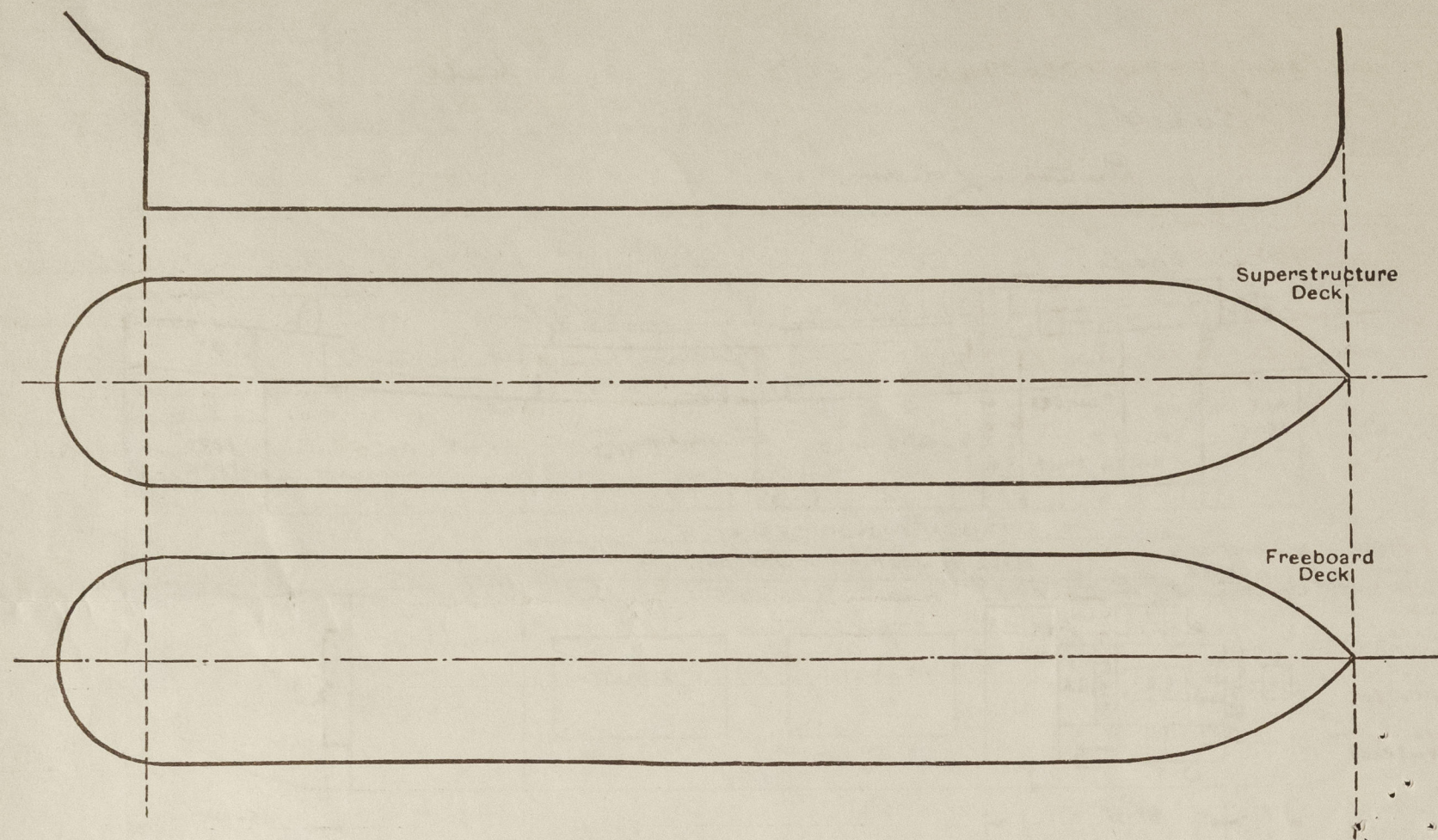
Particulars of Closing Appliances (state if capable of being manipulated from both sides).

Poop Bulkhead ... ..	No openings.
Raised Quarter Deck Bulkhead ... ..	✓
Bridge, After Bulkhead ... ..	✓
Bridge, Forward Bulkhead ... ..	✓
Forecastle Bulkhead ... ..	Hinged steel door, operated from both sides. ✓
Exposed Machinery Casings on Freeboard or Raised Quarter Decks ... ..	✓
Exposed Machinery Casings on Superstructure Decks ... ..	Hinged steel doors, operated from both sides. ✓
Machinery Casings within Superstructures not fitted with Class I Closing Appliances ... ..	✓
Deckhouses on Flush Deck Ships ... ..	✓



# PARTICULARS OF PROTECTION TO OPENINGS, ETC.

The following diagrams should be used to indicate the positions of cargo and coaling hatchways, gangway, cargo and coaling ports, ventilators, companionways, etc., which would affect the seaworthiness of the ship:—



Particulars of fiddle, funnel and ventilator coamings, engine room skylight and other openings in machinery casing tops and their means of closing:—

Engine & boiler casing top plated over.  
Engine room skylight of steel with four hinged covers.  
Boiler room fiddle provided with hinged steel storm cover, and protected by 6ft high steel coaming.

Particulars of Flush Bunker Scuttles:—

One 21" diam. stand. side aft with screwed securing bar & keep chain.

Particulars of Companionways:—

To aft crewspace, protected by steel deckhouse, hinged wood door - 11" sill.  
To fiddle space, efficient steel companion, with hinged wood door - 15" sill.

Particulars of Ventilators in exposed positions on freeboard and superstructure decks:— cowl vents

**Fiddle** 1 - 5 1/2" dia x 16" high coaming to accommodation (stand.)  
1 - " " x 21" " " " (port)  
1 - 11" " x 27" " " trunked to No 1 hold (stand.)  
**Bridge** 1 - 11" " x 27" " " to No 2 hold (& fore end)  
1 - 6" " x 20" " " to accommodation (p.s. aft)  
**Casing** 1 - 14" " x 20" " " to Engine room (p.s.)  
5 1/2" " screw down mushroom vent to accommodation (p.s.)  
All cowl ventilators supplied with wood plugs and canvas covers.

Particulars of Air Pipes in exposed positions on freeboard, raised quarter, or superstructure decks:—

**Fiddle** 1 - 4 1/2" diam. x 12" high to piping to Fore Peak Tank. (&)  
**Bridge** 1 - 3" " x 29" " " " to No 1 D.B. Tank (P.S.)  
2 - 3" " x 33" " " " " " 2 " " "  
2 - 3" " x 33" " " " " " 3 " " "  
2 - 3" " x 40" " " " " " 4 " " "  
1 - 3" " x 34" " " " " " 5 " " "  
1 - 2" " x 38" " " " " " E.R. Tank "  
1 - 2" " x 33" " " " " " Dry Tank "  
1 - 3" " x 14" " " " " " Aft Peak Tank (&)  
(protected by hatch coaming.)  
All air pipes provided with wood plug & canvas covers.

Empire Confederation

Particulars of Gangway Cargo and Coaling Ports:—

None.

Particulars of Scuppers and Sanitary Discharge Pipes:—

Upper Deck: 1 - 5" x 4" scupper P.S. aft end of well.

Bridge Deck: 7 - 7" x 4" " "

Sanitary Disch pipes:

from Fore Space: 1 - 4" dia. from crew's W.C. with N.R. valve on ship's side 3'3" below upper deck.  
1 - 2" " " " washplace do. do. 10" above upper dk.  
from Deckhouse aft 1 - 4" " " Officers' W.C. port with N.R. valve on ship's side 1'8" above upper deck.  
1 - 4" " " Captain's " stand. do. do. 2'6" above upper dk.  
1 - 1 1/2" " " washbasin etc stand without storm valve, 2'6" above upper deck.

Particulars of Side Scuttles:—

3 stand, 4 port 12" diam. with hinged dead lights, to accommodation spaces aft and bridge space

Vertical distance of Sill of lowest Side Scuttle above top of keel

21'8"

Particulars of Guard Rails:—

Sides & aft end of forecabin, fore side bridge, and around counter, 3'3" high, top rail 1 1/4" dia, 2nd & lower rail 1" diam.

Particulars of Gangways, Lifelines, etc.:—

Suitable fittings provided in forward well.

## Particulars of Freeing Arrangements.

	Length of Bulwark	Height of Bulwark	Size of Freeing Ports	Number each side	Area each side	Rule area each side
Bridge Port Dk. After Well ... ..	Approx 180'0"	4'0"	3'0" x 1'7 1/2"	4	19.44 square feet	18.0
Forward Well ... ..	31'7"	4'4"	3'0" x 1'7 1/2"	2	9.72	9.66

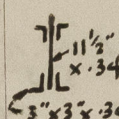
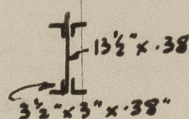
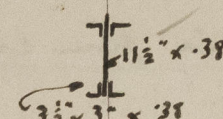
State position of each freeing port ... .. { After Well:— { Evenly spaced fore & aft.  
(F. and A. position and height above deck edge) { Forward Well:— { 9" above deck.

State whether the freeing ports are fitted with shutters, bars, or rails, and give particulars of such:— steel hinged shutters

Additional area where sheer is less than standard.



## PARTICULARS OF PROTECTION TO OPENINGS, ETC.

HATCHWAYS ON FREEBOARD AND SUPERSTRUCTURE DECKS.									
Upper Deck Bridge Deck									
Description of Hatchway			Nº 1	Nº 2	Nº 3	Nº 2	Nº 3	Bunker Hatchways	
Dimensions of Hatchway			27'-0" x 12'-8"	39'-3" x 16'-0"	39'-3" x 16'-0"	39'-4" x 16'-4"	39'-4" x 16'-4"	5'-7" x 2'-7"	
COAMINGS	{	Height above Deck	30"	24½"		32"		30"	
		Thickness	Sides	.38	.48		.50		.38
			Ends	.38	.48		.50		.38
		Stiffeners	6" x 3 x .40	NONE		7" x 3 x .40 BA.		NONE	
		Brackets, Stays	NONE	NONE		NONE		NONE	
HATCH BEAMS	{	Number	3	5		5			
		Spacing	6'-7½"	6'-7½"		6'-7½"			
		Scantling and Sketch						NONE	
		Bearing Surface	2"	2"		2"			
			EFFICIENT	EFFICIENT		EFFICIENT.			
FORE AND AFTERS	{	Number							
		Spacing							
		Unsupported Lengths							
		Scantling* and Sketch	None	None.		None		None	
		Bearing Surface							
HATCH COVERS	{	Material	Pine	Pine		Pine		Pine	
		Thickness	3"	2½"		3"		3"	
		How fitted (method)	F.A.A.	F.A.A.		F.A.A.		Atkins clips	
		Bearing Surface	3"	3"		3"		3"	
Spacing of Cleats			21½"	24"		23½"		24"	
Number of Tarpaulins			2	2		2		2	

\*Are wood fore and afters steel shod at all bearing surfaces? No.

Are battens and wedges efficient and in good condition? Yes.

Are tarpaulins in good condition and in accordance with rule requirements? Yes.

Are lashings provided in accordance with rule requirements? Yes.

Particulars of any special features:— *for Timber Load Line.*

D.B. Tanks N<sup>o</sup> 2-6 subdivided at centre line.

Strong steel bulwarks provided, adequately stiffened

Emergency steering gear - { handwheel on aft end of prop.

{ Relieving tackle provided, led to aft. winch.

Eyeplates for lashings - 10 ft apart, welded to sheerstrake.

Supports for uprights - 10 ft. apart, angle shoes on stringer plate,  
and 7/8" dia iron bars fitted in slots  
in bulwark rail.

Endorsement at first survey and at surveys for renewal of Certificate :—

The fittings and appliances are in accordance with the particulars shown on this form (or as now modified) and are in good condition.