

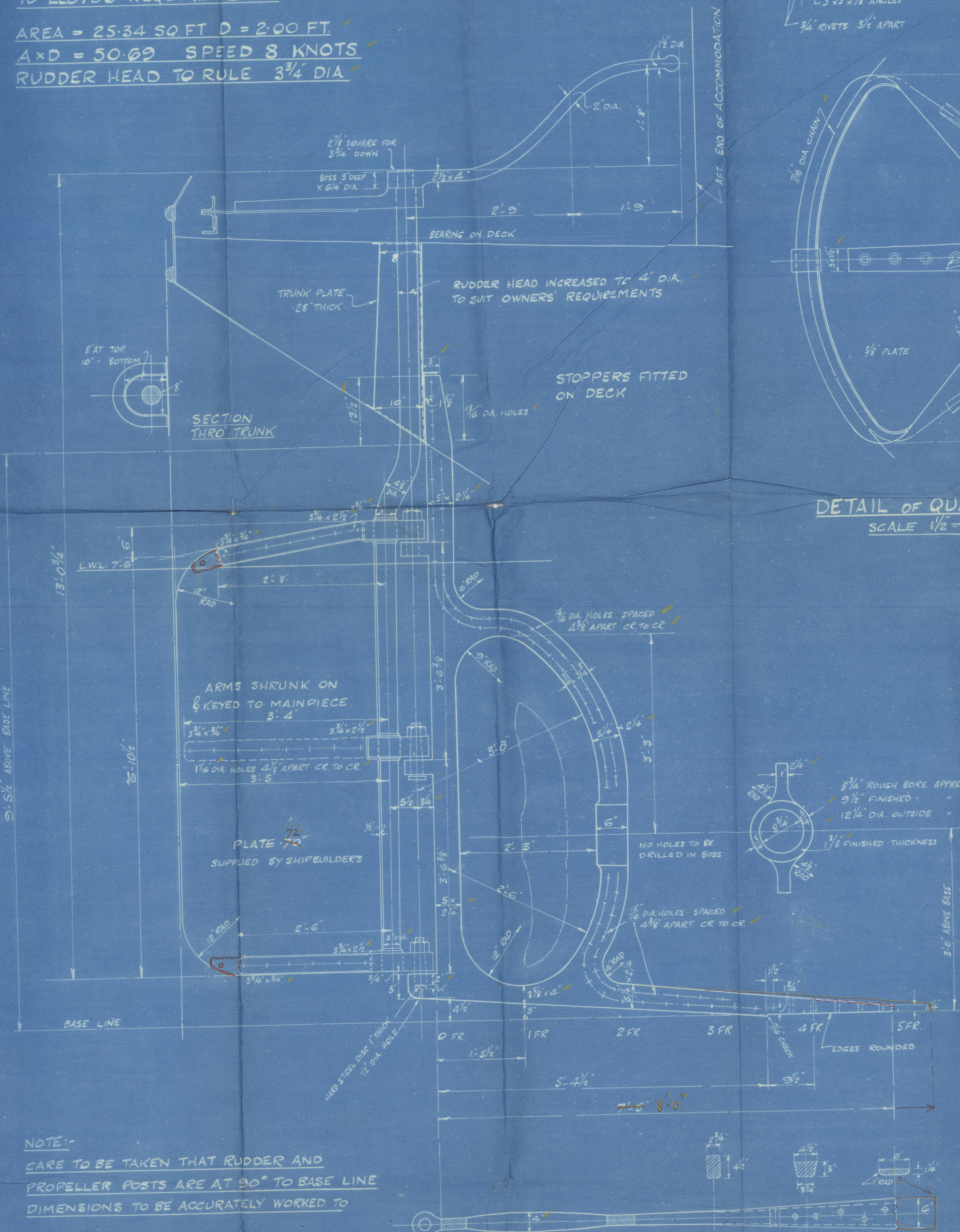
Nº 40 SHIP

STERNFRAME, RUDDER ETC.

SCALE 1" = 1 FOOT

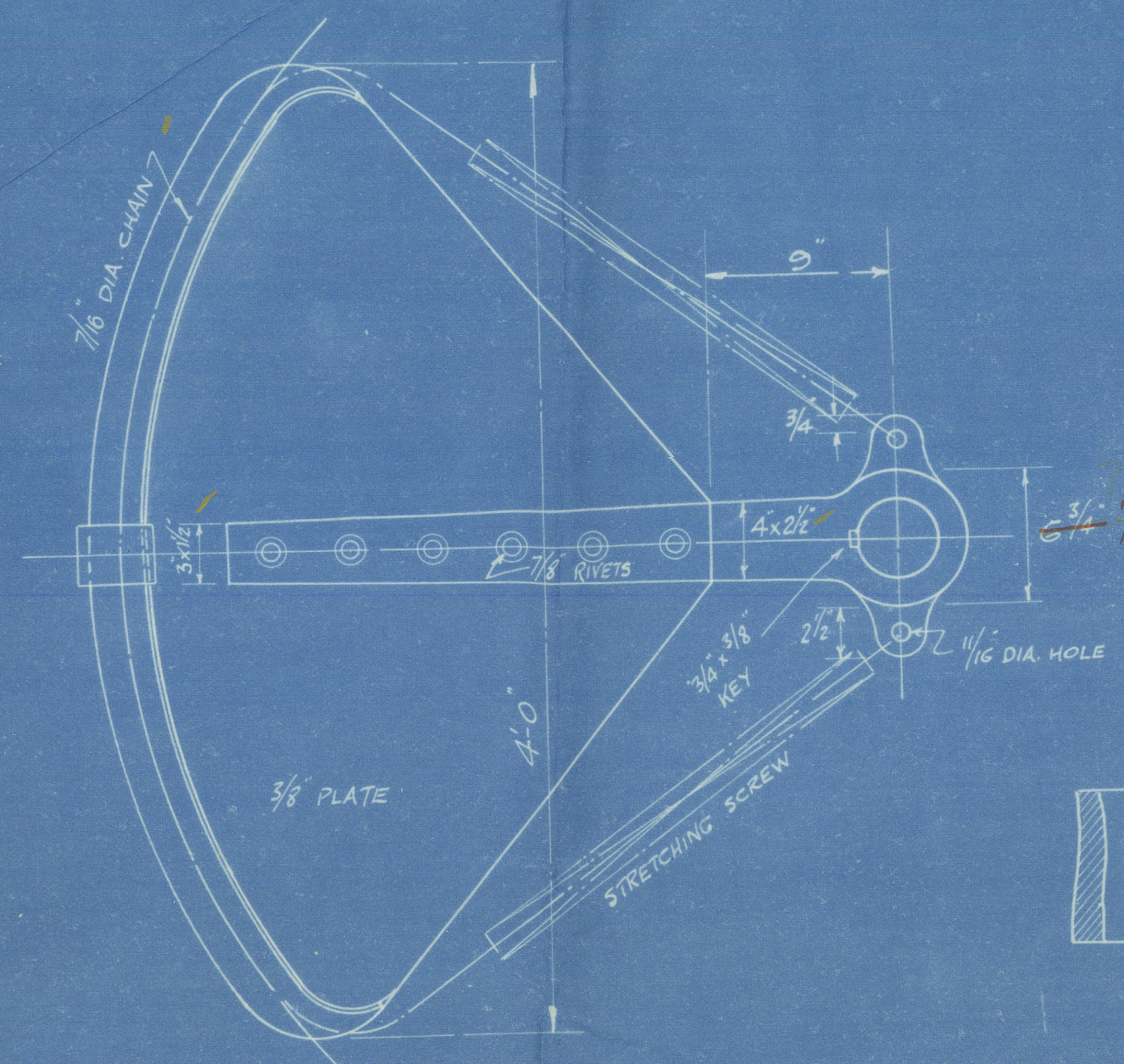
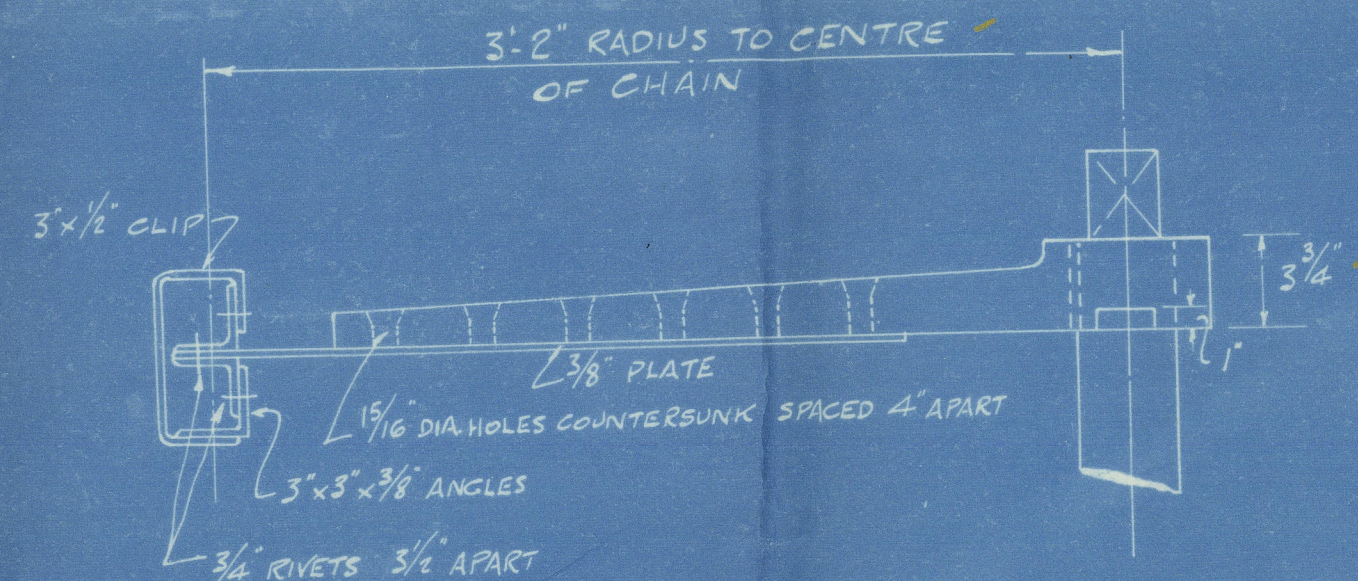
STERN FRAME OF FORGED SCRAP IRON
RUDDER FRAME OF BEST WROUGHT IRON
QUADRANT ARM AND TILLER OF FORGED OPEN HEARTH STEEL
TO LLOYDS REQUIREMENTS

AREA = 25.34 SQ. FT. D = 2.00 FT.
A x D = 50.69 SPEED 8 KNOTS
RUDDER HEAD TO RULE 3 3/4" DIA.

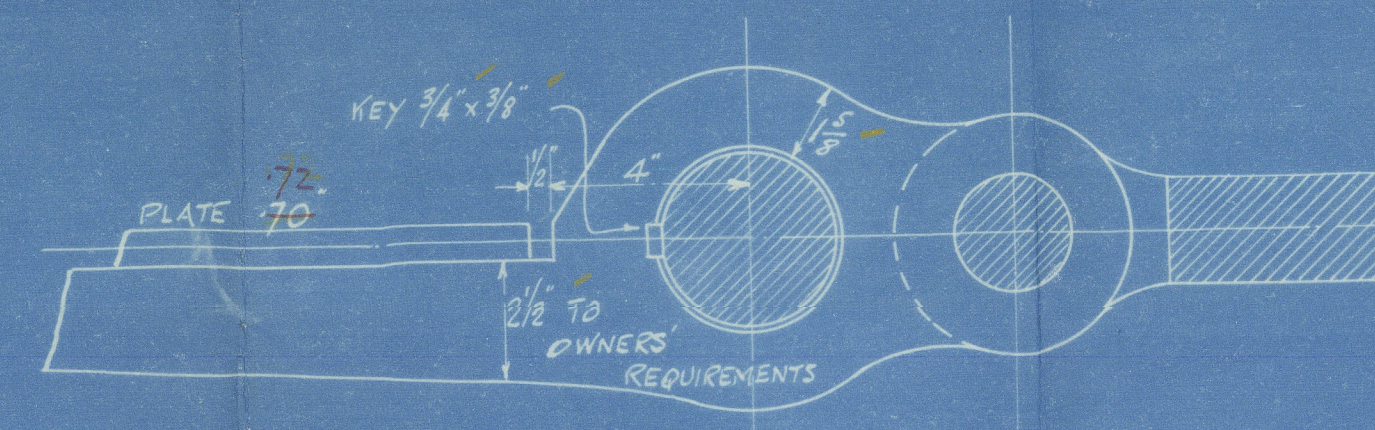
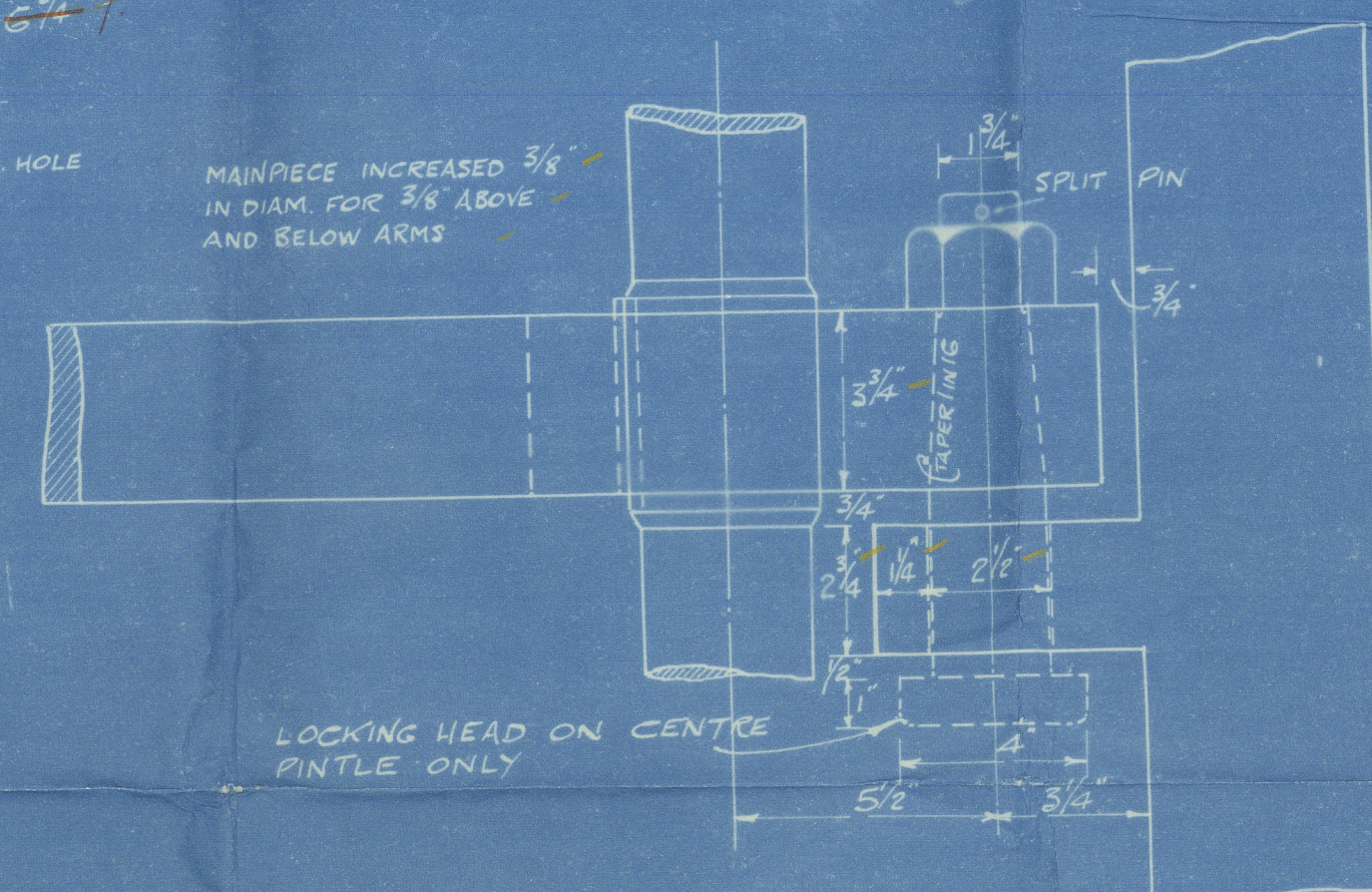


NOTE:-

CARE TO BE TAKEN THAT RUDDER AND
PROPELLER POSTS ARE AT 90° TO BASE LINE
DIMENSIONS TO BE ACCURATELY WORKED TO



DETAIL OF QUADRANT
SCALE 1 1/2" = 1 FOOT



DETAIL OF GUDGEONS AND PINTLES
SCALE 3" = 1 FOOT

S. S. CALDERGATE
NEWCASTLE ON TYNE.

Report No. 80132.



© 2021

Lloyd's Register
Foundation

Alcyon
Amble S.B. Co. S/s. N^o 40

Plan of Steam Frame, Ruddin + Quadrant
Martin + Siller



© 2021

Lloyd's Register
Foundation

010405-010415-0144