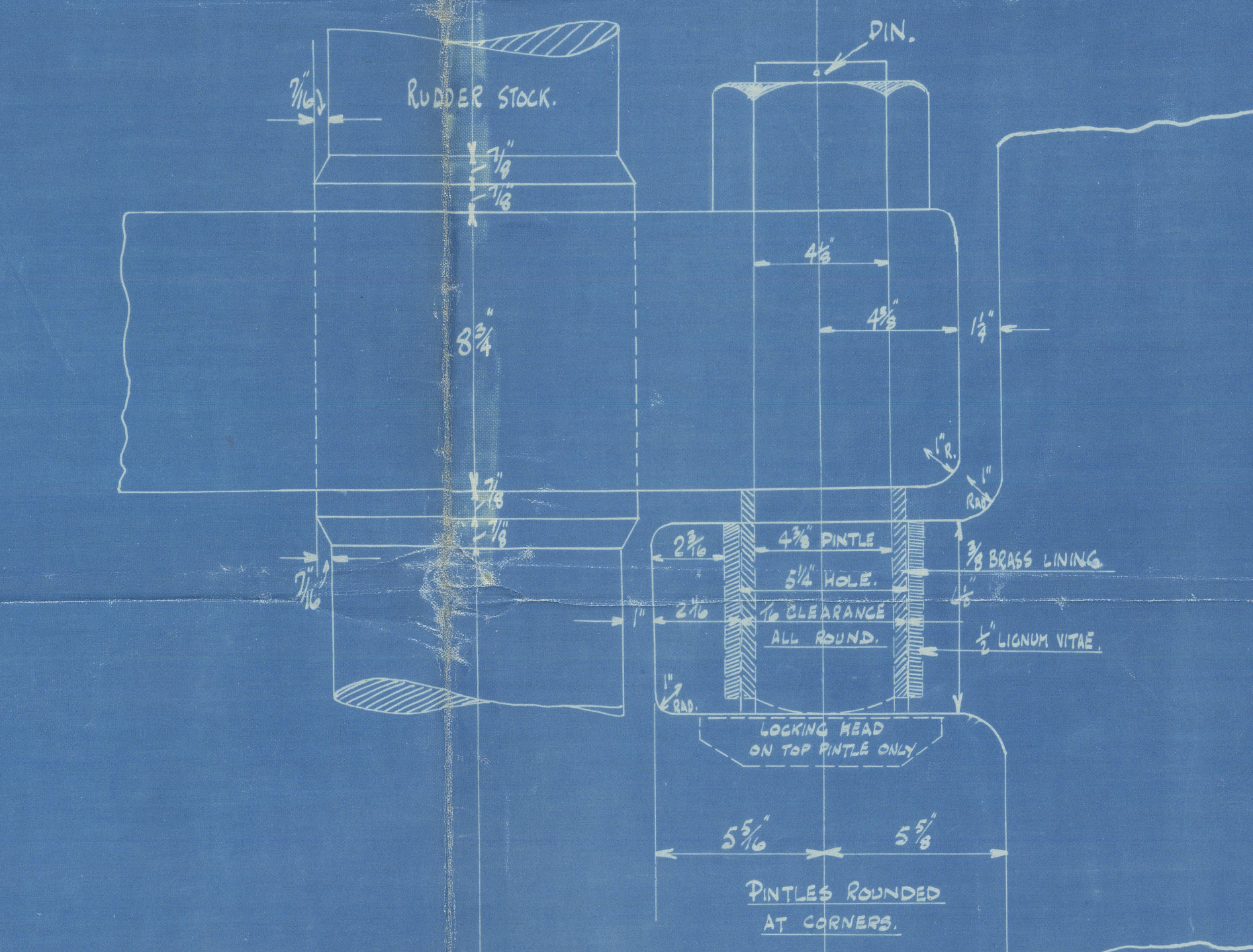


STERN AND RUDDER FRAMES. Nos 412 & 16. FORGED IRON OR STEEL.

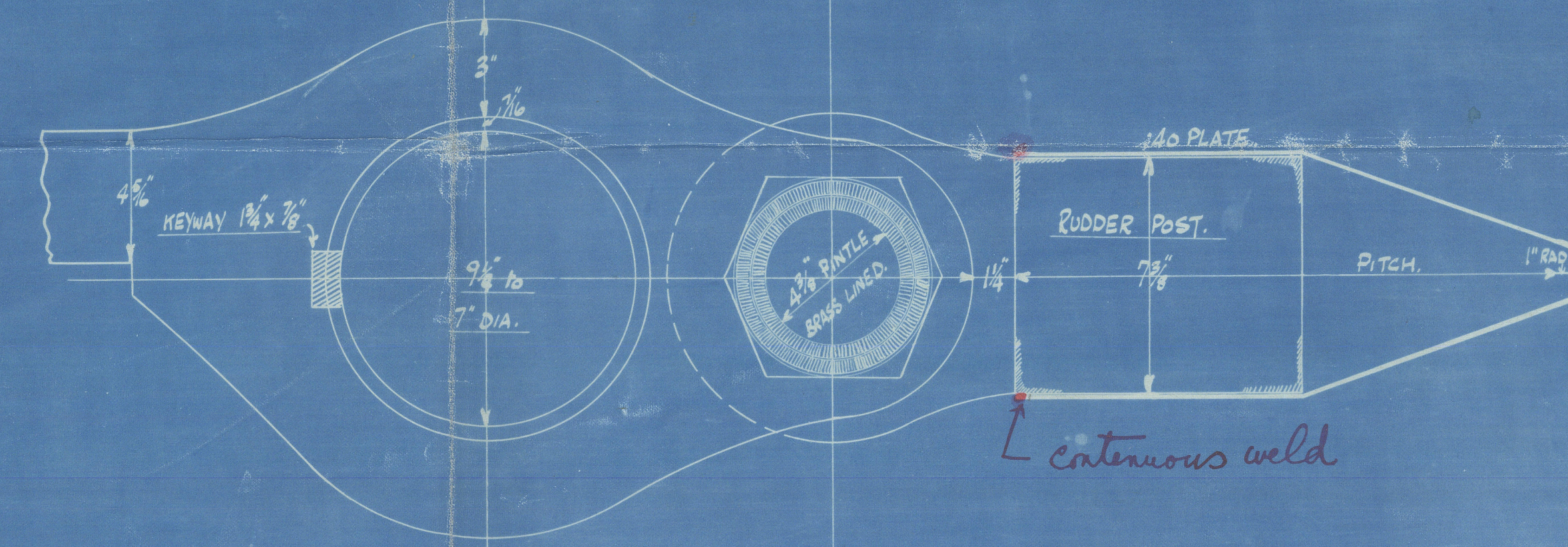
FIGURED DIMENSIONS TO BE WORKED TO IN EVERY CASE.
 $L \times D = 11075$. And $d = 114.72 \times 3.05 = 350$ SPEED NOT EXCEEDING 10 KNOTS. DIA. RUDDER HEAD $3\frac{3}{4}$ " TO $6\frac{1}{2}$ " AT HEEL FOR LLOYDS.
 $1\frac{1}{2}$ " @ HEAD = $9\frac{1}{4}$ " FOR OWNERS REQUIREMENT.
 AND 7" @ HEEL " " " "

DETAIL OF GUDGEONS AND PINTLES Nos 2, 3, 4 & 5.
 SCALE $3" = 1 \text{ foot}$.

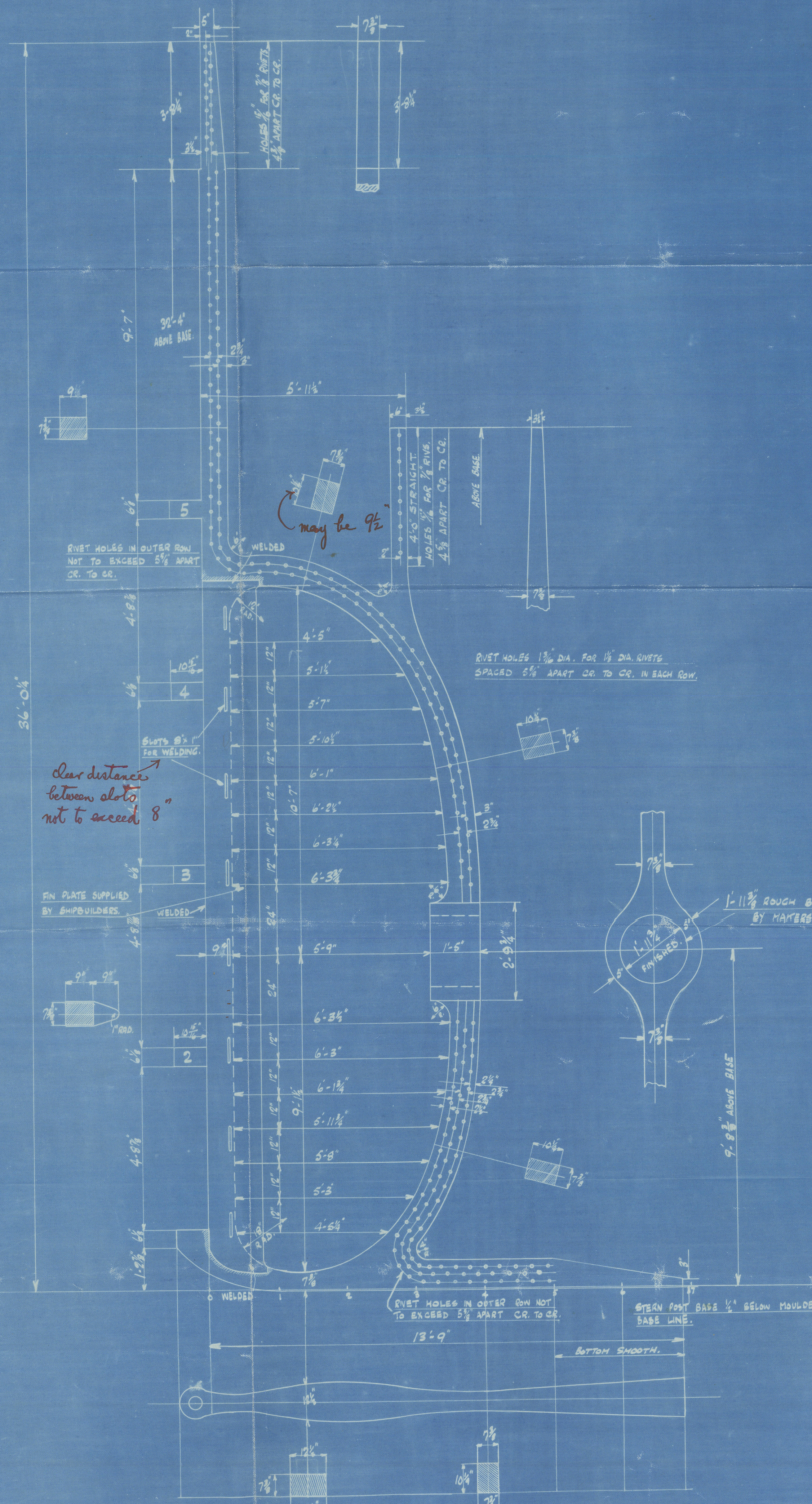
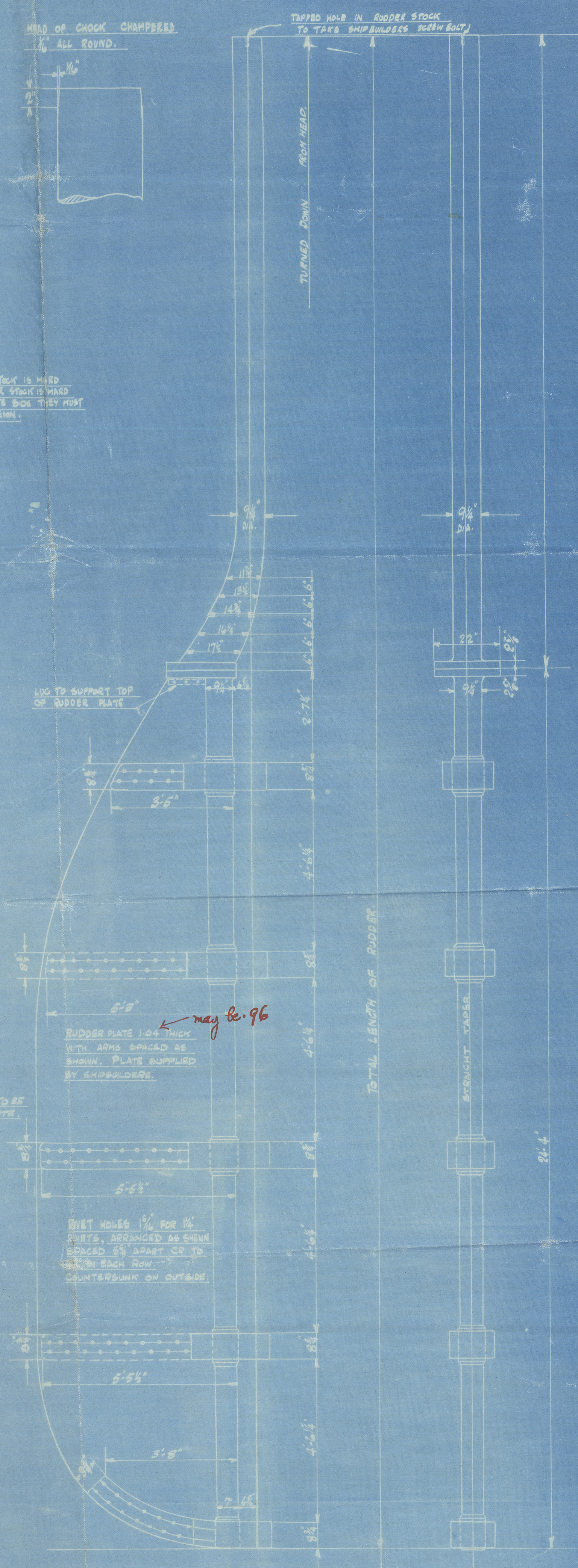
DETAIL OF COUPLING.
 Scale $1\frac{1}{2}" = 1 \text{ foot}$.



PLAN VIEW.



SKETCH OF BOTTOM PINTLE AND GUDGEON.
 BOTTOM PINTLE TO BE SHORT AS SHOWN
 TO ALLOW FOR $\frac{1}{2}$ " STEEL DISC.



ARM AT TAIL PIECE $8\frac{1}{2} \times 4\frac{1}{2}$
 METAL ROUND MANPLATE 5"
 ARM AT POINT $6\frac{1}{2} \times 1\frac{1}{2}$

KEYWAY IN EACH ARM $1\frac{1}{2} \times \frac{1}{2}$

RUDDER PLATE 10" THICK
 WITH 40% SPACED AS SHOWN. PLATE SUPPLIED BY SHIPBUILDERS.

RIVET HOLES $1\frac{1}{2}$ " DIA. FOR 1" DIA. NUTS
 SPACED 5" APART CO. TO CO. IN EACH ROW
 MOUNTED ON OUTSIDE

Clear distance
 between slots
 not to exceed 8"

RIVET HOLES $1\frac{1}{2}$ " DIA. FOR 1" DIA. NUTS
 SPACED 5" APART CO. TO CO. IN EACH ROW

RIVET HOLES $1\frac{1}{2}$ " DIA. FOR 1" DIA. NUTS
 SPACED 5" APART CO. TO CO. IN EACH ROW

1-11 1/2" ROUGH BORE
 BY HARTMAN

RIVET HOLES IN OTHER ROW NOT
 TO EXCEED 5" APART CO. TO CO.

STERN POST BASE $1\frac{1}{2}$ " BELOW MAULDED
 BASE LINE

BOTTOM SHOOTING

8.5.29
 4.5.29
 2570

3

Sternframe Kuydder

W-412 and 16

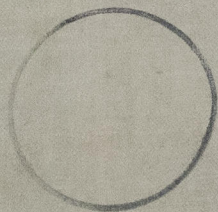
Northumberland SB Co (1927) Ltd.

★ Idberger ★
S.S. "Wearwood"

85156

S.S. Maplewood
NEWCASTLE ON TYNE.
Report No. 85781

RECORDS DEPT.,
LONDON.



W.P. B's 412 & 416

010369-010377-0294



© 2021

Lloyd's Register
Foundation