

No 926



MIDSHIP SECTION.

SCALE 1/2 IN. TO ONE FT.

DIMENSIONS—LENGTH B.P. 407'-3" BREADTH MLD 50'-10" DEPTH MLD 32'-7"

RULE NUMERALS—

BREADTH	50.83
DEPTH	32.58
83.41	TRANS. NO.
LENGTH	407.25
33,968.72	LONG. NO.
d	19.65
1/2 TO BR. DK.	10.10
1/2 TO UP. DK.	12.50

BRIDGE DECK PLATE .40"
POOP DECK PLATE .30"
F.CLE DECK PLATE .25" SHEATHED WITH JIVEGON ANE.
BUTTS OVERLAPPED DOUBLE RIVETED ON BRIDGE & SINGLE RIVETED ON POOP & F.CLE.
SINGLE RIVETED SEAMS ON POOP, BRIDGE & F.CLE.

BRIDGE DECK STRINGER ANGLE—5 1/2 x 5 1/2 x 16" & 3 1/2 x 3 1/2 x 36" ON POOP & F.CLE.
BRIDGE DECK STRINGER PLATE—5 1/2 x 3 1/2 x 35 1/2" AT POOP & F.CLE.
BUTTS OVERLAPPED TREBLE RIVETED ON BRIDGE & DOUBLE RIVETED ON POOP & F.CLE DECK.

BRIDGE DECK BEAM—7 1/2 x 7 1/2 x 42" BULB ANG., BEAM KNEE 20 x 20 x 42"
POOP DECK BEAM—5 1/2 x 5 1/2 x 35 1/2" BULB ANG., BEAM KNEE 17 x 17 x 40"
FITTED ON EVERY FRAME (TWO ROWS OF PILLARS).
F.CLE DECK BEAM—3 1/2 x 3 1/2 x 50" BULB ANG., BEAM KNEE 25 x 25 x 50"
FITTED ON ALTERNATE FRAMES (TWO ROWS OF PILLARS).
WOOD SPARKING—6 x 1 1/2" SOFT WOOD, IN COAL & CARGO SPACES ONLY.

UPPER DECK STRINGER ANG—5 x 5 x 16" FOR 1/2 L & 3 1/2 x 3 1/2 x 48" IN BRIDGE, 3 1/2 x 3 1/2 x 44" AT ENDS & IN POOP & F.CLE.
SHELL ANGLE—3 1/2 x 3 1/2 x 48" IN BRIDGE & 3 1/2 x 3 1/2 x 44" IN POOP & F.CLE.
UPPER DECK STRINGER PLATE—60 x 62", 82" AT ENDS OF BRIDGE, 48" IN BRIDGE & 35 1/2" AT ENDS BUTTS OVERLAPPED QUADRUPLE RIVETED FOR 1/2 L & TREBLE RIVETED IN BRIDGE & AT ENDS.

UPPER DECK BEAM—7 1/2 x 7 1/2 x 44" BULB ANG. & THOSE UNDER 1/2 L & 6 x 6 x 42" BULB ANG., BEAM KNEE 21 x 21 x 44"
FITTED ON EVERY FRAME (TWO ROWS OF PILLARS).

MAIN DECK PLATE—.30" FOR 1/2 L & TO .50" AT ENDS, BUTTS OVERLAPPED DOUBLE RIVETED FOR 1/2 L & TO SINGLE RIVETED AT ENDS.
SEAMS SINGLE RIVETED.

MAIN DECK STRINGER PLATE—58 x 68" FOR 1/2 L & TO 35 1/2" AT ENDS .44" IN WAY OF BRIDGE, BUTTS OVERLAPPED TREBLE RIVETED.

MAIN DECK STRINGER ANGLE—3 1/2 x 3 1/2 x 48" TO .44" AT ENDS
SHELL ANGLE—3 1/2 x 3 1/2 x 48" FOR 1/2 L & TO .44" AT ENDS

MAIN DECK BEAM—8 1/2 x 8 1/2 x 52" BULB ANG. & THOSE UNDER 1/2 L & 7 1/2 x 7 1/2 x 48" BULB ANG. (TWO ROWS OF PILLARS).
DEEP TANK BEAM—7 1/2 x 7 1/2 x 48" BULB ANG. (3 ROWS OF PILLARS).
FITTED ON EVERY FRAME.
BEAM KNEE—25 x 25 x 44" & DEEP TANK BEAM KNEE 28 x 28 x 50"

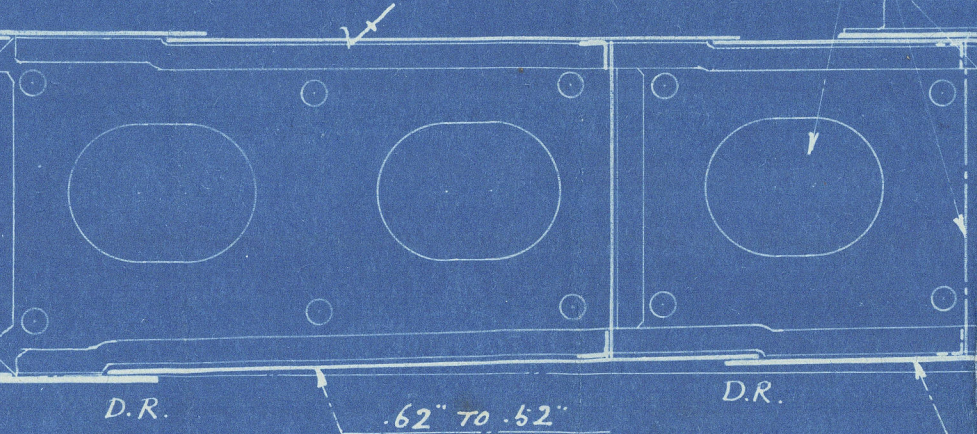
FRAMES—SPACED 21" APART & TO 24" AT ENDS.
IN PEAKS FRAME BAR 6 1/2 x 3 1/2 x 38" ANG. REVERSE BAR 3 1/2 x 3 1/2 x 38" ANG. FORMING 6" GIRDER.
IN HOLDS FRAME BAR 6 1/2 x 3 1/2 x 52" ANG. REVERSE BAR 7 x 3 1/2 x 52" ANG. FORMING 9 1/2" GIRDER.

REVERSE BARS—ALL TO EXTEND UP TO UPPER DECK, BUT IN WAY OF F.CLE TO EXTEND UP TO F.CLE DECK & UPPER DK. ALTERNATELY.
WOOD SPARKING 6 x 2" SOFT WOOD SPACED 12".

TANK TOP PLATING—.40" TO .36" IN HOLD, .48" IN ENGINE SPACE & .56" IN BOILER SPACE, BUTTS OVERLAPPED DOUBLE RIVETED FOR 1/2 L & TO SINGLE RIVETED AT ENDS. SEAMS OF CENTRE STRAKE DOUBLE RIVETED & OF REMAINING STRAKES SINGLE RIVETED.
TANK KNEES—.40" TO .36" FLANGED BY 3 1/2" ON TOP, .50" IN BOILER SPACE, FITTED BETWEEN FRAME & REVERSE FRAME.
MARGIN PLATE—35 x 48", 58" IN BOILER SPACE, BUTTS OVERLAPPED TREBLE RIVETED FOR 1/2 L & TO DOUBLE RIVETED AT ENDS.

TANK SIDE OUTER LUGS—6 x 6 x 48" SINGLE .58" IN BOILER SPACE FROM COLLISION BULKHEAD TO AFT OF ENGINE BULKHEAD, 3 1/2 x 3 1/2 x 40" SINGLE AT AFT END.
TANK SIDE INNER LUGS—4 x 3 1/2 x 40" SINGLE .50" IN BOILER SPACE.
GUSSET ANG—3 1/2 x 3 1/2 x 50" TO EVERY 2ND FRAME, 60" IN B.S.
3" CLOSE CEILING UNDER HATCH WAY.

TANK TOP CENTRE STRAKE—60 x 48" TO 38" AT ENDS, .36" IN BOILER SPACE, 1.00" IN ENGINE SPACE.
BUTTS OVERLAPPED TREBLE RIVETED FOR 1/2 L & TO DOUBLE RIVETED AT ENDS.
FULL DEPTH GIRDER UNDER PILLAR FOR 2 FRAME SPACES.
NO MANHOLLS TO FLOOR PLATE & GIRDER UNDER PILLAR.
TANK TOP PLATING MARKED THIS 1/2" INCREASED .02" ALL AFORE AND AFT.



FLAT PLATE KEEL—47 x 102" FOR 3/4 L & TO 75" AT ENDS.
BUTTS DOUBLE BUTTSTRAPPED TREBLE RIV. FOR 1/2 L & TO QUADRUPLE RIVETED OVERLAPPED AT ENDS.

SHELL—FROM FLAT PLATE KEEL TO UPPER TURN OF BILGE.
BUTTS OVERLAPPED QUADRUPLE RIVETED FOR 1/2 L & TO TREBLE RIV. AT ENDS.
BOSS PLATE .74"

EQUIPMENT NUMBER—

(B+D)xL	(50.83+32.58)x407.25	= 33,968.72
POOP	3/4 x 39.75 x 7.75	= 231.05
BRIDGE	3/4 x 137.25 x 7.75	= 797.77
F.CLE	3/4 x 45.75 x 7.75	= 265.32
CASING GALLEY	1/2 x (0.5 x 800 + 26,000 x 85)	= 152.50
DK HOUSE	1/2 x 25.75 x 8.00	= 103.00
EQUIPMENT NUMBER		35,578.96

EQUIPMENT—
TWO BOWER ANCHORS TO BE 20% HEAVIER THAN RULE REQUIREMENTS.

1 BOWER ANCHOR (STOCKLESS TYPE)	76 1/2 CWTs
1 " " " " " "	76 1/2 " "
1 " " " " " "	54 1/2 " "
1 STREAM ANCHOR (EX. STOCK)	17 1/2 " "
1 KEDGE " " " " " "	7 1/2 " "
270 FATHOMS 2 1/4" DIA. STUD CHAIN CABLE	
90 " 4 3/4" CIR. STEEL STREAM WIRE	
120 " 5" " " " WIRE TOW LINE	
2-90 " 2 1/2" " " " " HAWSERS	
2-90 " 2 3/4" " " " " " "	
90 " 7" " " " " MANILA ROPE WARP LAID	
90 " 7" " " " " " "	
90 " 8" " " " " " "	
90 " 8" " " " " " "	

BRIDGE SIDE PLATING—48 x 68"
BUTTS OVERLAPPED QUADRUPLE RIVETED.
POOP SIDE PLATING—.38"
F.CLE SIDE PLATING—.42"
BUTTS OVERLAPPED DOUBLE RIVETED.

D.R. IN WAY OF POOP & F.CLE.
.64" IN WAY OF BRIDGE, BUTTS OVERLAPPED QUADRUPLE RIV. .42" IN WAY OF F.CLE & .38" AT POOP SIDE, BUTTS OVERLAPPED DOUBLE RIV.

D.R. IN WAY OF BRIDGE
S.R. " " " " " "

UPPER DECK SHEERSTRAKE—58 x 88" FOR 1/2 L & TO .46"
AT ENDS IN WAY OF BRIDGE .64", AT ENDS OF BRIDGE DOUBLED.
BUTTS OVERLAPPED QUADRUPLE RIVETED FOR 1/2 L & TO TREBLE RIV. IN WAY OF BRIDGE & AT ENDS, WHERE NOT EXCEEDING .68".

D.R.

.72" TO .46" IN WAY OF BRIDGE .64"
BUTTS OVERLAPPED QUADRUPLE RIVETED FOR 1/2 L & TO TREBLE RIVETED IN WAY OF BRIDGE & AT ENDS, WHERE NOT EXCEEDING .68".

D.R.

D.R.

D.R.

D.R.

D.R.

D.R.

D.R.

D.R.

D.R.

D.R.

D.R.

D.R.

D.R.

D.R.

D.R.

D.R.

D.R.

D.R.

D.R.

D.R.

D.R.

D.R.

D.R.

D.R.

D.R.

D.R.

D.R.

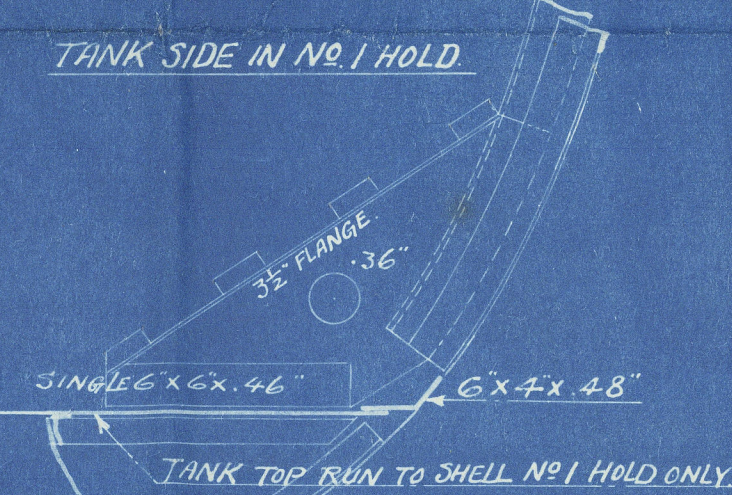
D.R.

D.R.

D.R.

D.R.

D.R.



TANK SIDE IN NO. 1 HOLD

35" FLANGE

SINGLE 6 x 6 x 46"

6 x 4 x 48"

TANK TOP RUN TO SHELL NO. 1 HOLD ONLY.

4" x 10" TEE
BILGE KEEL 6 3/4 x 50" ANGLE
WITH 10 x 50" BULB PLATE.

D.R.

D.R.

D.R.

D.R.

D.R.

D.R.

D.R.

D.R.

010364 01770 2034

Osaka Iron Works
S^o No 926. (Imoshima Bldg.)

Midship Section

Taibu Maru.

Kobe Rpt No 2293

No Report Received

M^r Katohira Maru^r



© 2021

Lloyd's Register
Foundation

010369 - 010377 - 0137