

# Lloyd's Register of Shipping.

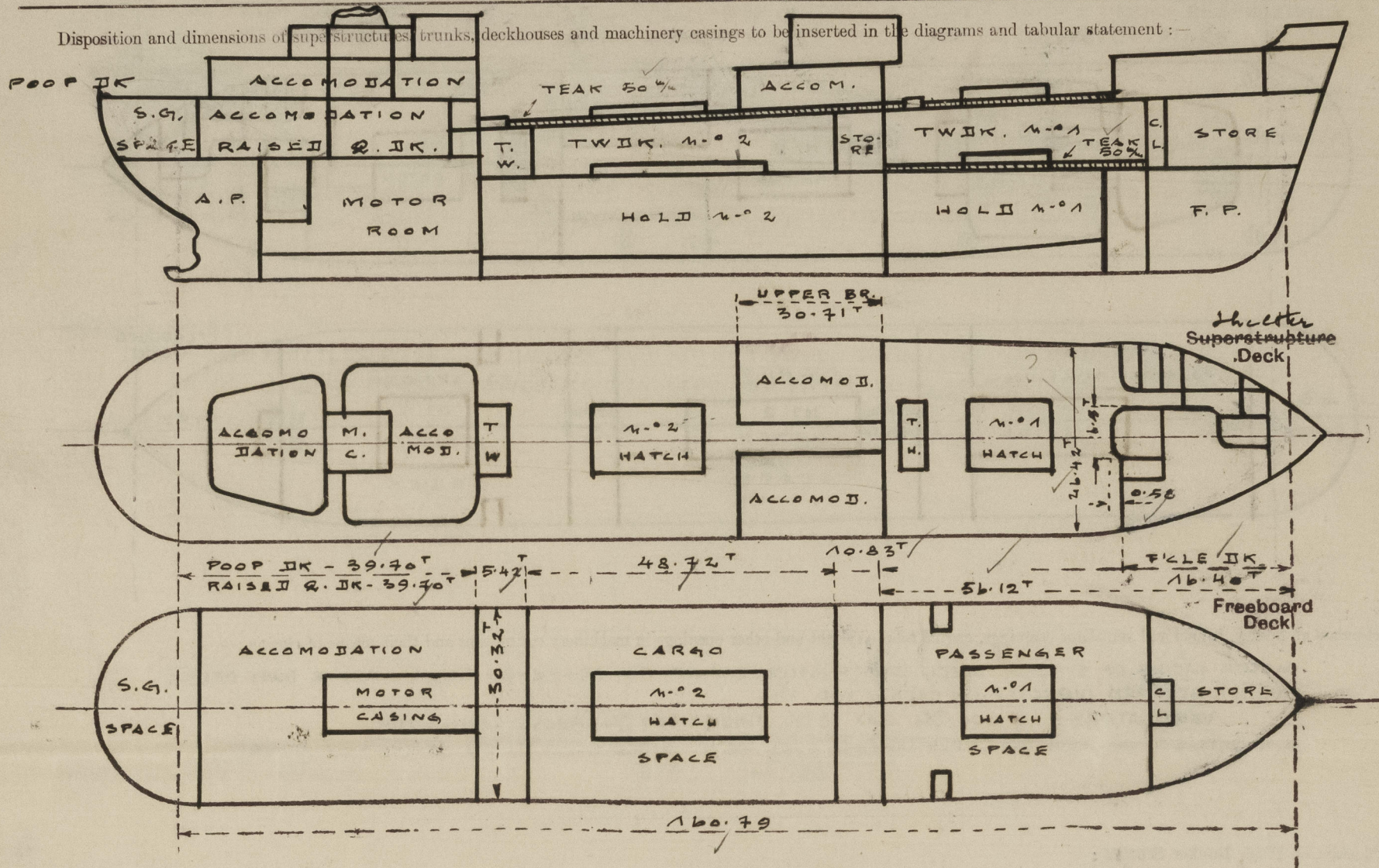
## SURVEYS FOR FREEBOARD.

(CONDITIONS OF ASSIGNMENT.)

18 AUG 1953

Ship's Name NAIKO Port of Survey TRIESTE  
 Official Number ✓ Surveyor's Signature [Signature]  
 Nationality and Port of Registry Indonesian - JAKARTA Date of Survey During construction

Disposition and dimensions of superstructures, trunks, deckhouses and machinery casings to be inserted in the diagrams and tabular statement:—



Particulars of Superstructures, Trunks, Casings, Deckhouses.

|   | Coaming | Plating | Stiffeners     | Spacing            | End Attachments of Stiffeners | Size of Openings               | Height of Sills | Height of Casings |
|---|---------|---------|----------------|--------------------|-------------------------------|--------------------------------|-----------------|-------------------|
| Poop Bulkhead ...   | 6.5 m/m | 6.5 m/m | 75 X 50 X 7 T  | 720 m/m            | WELDED TOP & BOTTOM           | ✓                              | ✓               | 2100 m/m          |
| Raised Quarter Deck Bulkhead ...  | 6 m/m   | 5 m/m   | 75 X 50 X 7 T  | 720 m/m            | WELDED TOP & BOTTOM           | ✓                              | ✓               | 2100 m/m          |
| Bridge, After Bulkhead ...  | 6 m/m   | 5 m/m   | 75 X 50 X 7 T  | 720 m/m            | WELDED TOP & BOTTOM           | 915 X 1750                     | 150 m/m         | 2100 m/m          |
| Bridge, Forward Bulkhead ...  | 7 m/m   | 6 m/m   | 75 X 50 X 7 T  | 700 m/m            | WELDED TOP & BOTTOM           | 10 610 X 1540<br>10 700 X 1540 | 360 m/m         | 2100 m/m          |
| Forecastle Bulkhead (SHELTER DECK)  | 6 m/m   | 5 m/m   | 65 X 100 X 7 T | 720 m/m TO 550 m/m | WELDED TOP & BOTTOM           | 1200 X 1500                    | 360 m/m         | 2100 m/m          |
| Trunk, Aft TONNAGE WELL FOR <sup>d</sup> BND  |         |         |                | NONE               |                               |                                |                 |                   |
| Trunk, Forward  |         |         |                | NOT EXPOSED        |                               |                                |                 |                   |
| Exposed Machinery Casings on Freeboard or Raised Quarter Decks                      |         |         |                | NOT EXPOSED        |                               |                                |                 |                   |
| Exposed Machinery Casings on Superstructure Decks                                   |         |         |                | NONE               |                               |                                |                 |                   |
| Machinery Casings within Superstructures not fitted with Class I Closing Appliances |         |         |                | NONE               |                               |                                |                 |                   |
| UPPER BRIDGE BULKHEADS FOR <sup>d</sup>   | 9 m/m   | 7.5 m/m | 120 X 80 X 8 T | 680 m/m            | WELDED TOP                    | 1200 X 1540                    | 360 m/m         | 2100 m/m          |
| Deckhouses on Flash Deck Ships ON SHELTER DECK AFT                                  | 7 m/m   | 5.5 m/m | 60 X 40 X 5 T  | 500 m/m            | WELDED TOP & BOTTOM           | 30 650 X 1540; 10 610 X 1540   |                 |                   |

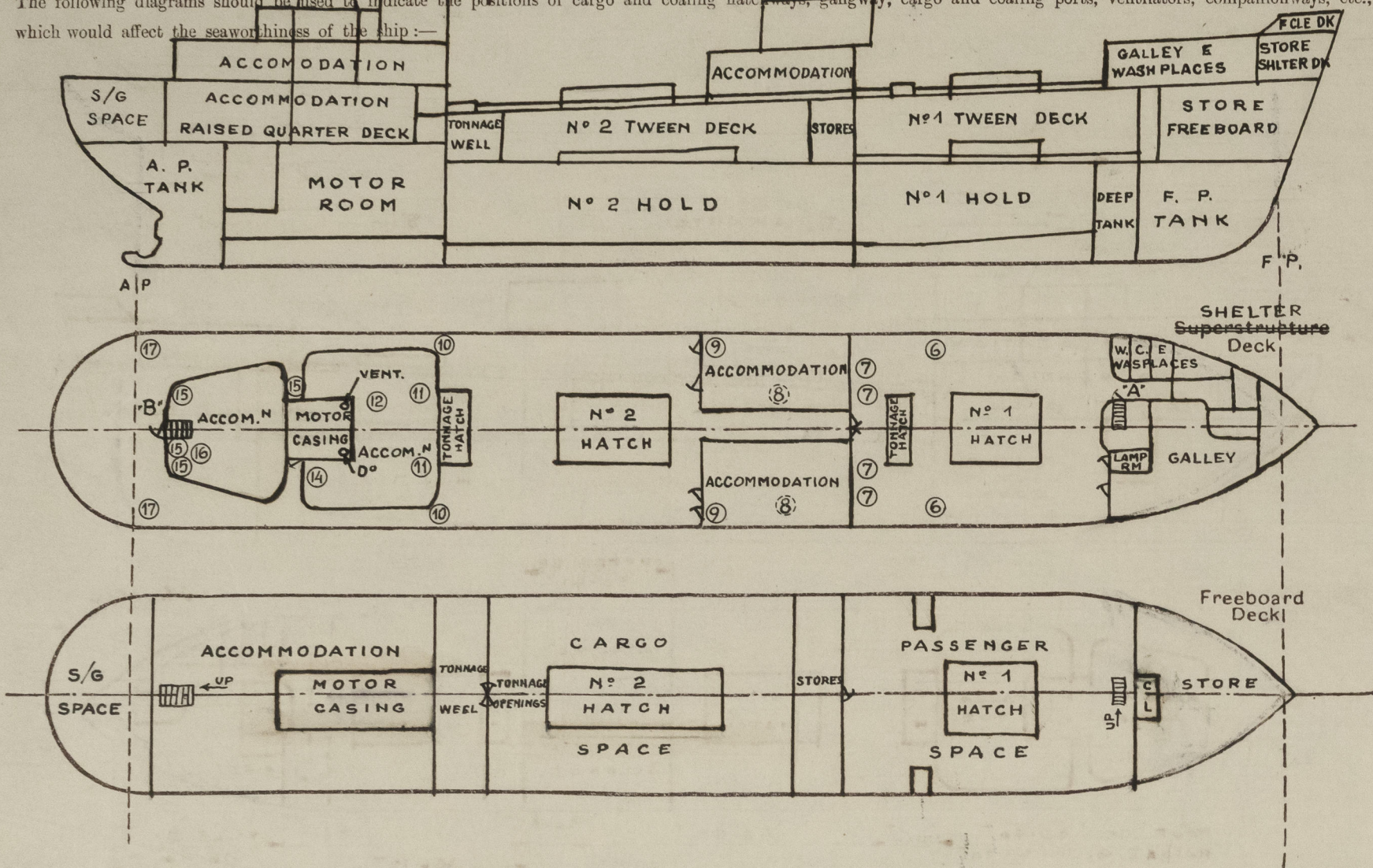
Particulars of Closing Appliances (state if capable of being manipulated from both sides).

|   |   |
|---|---|
| Poop Bulkhead ...   | NO OPENINGS   |
| Raised Quarter Deck Bulkhead ...  |   |
| Bridge, After Bulkhead ...  | NO OPENINGS   |
| Bridge, Forward Bulkhead ...  | HINGED STEEL W.T. DOOR CAPABLE OF BEING OPERATED FROM BOTH SIDES                |
| Forecastle Bulkhead (SHELTER DECK)  | TWO STEEL DOORS CAPABLE OF BEING OPERATED FROM BOTH SIDES                       |
| Exposed Machinery Casings on Freeboard or Raised Quarter Decks  | NOT EXPOSED   |
| Exposed Machinery Casings on Superstructure Decks   | NOT EXPOSED   |
| Machinery Casings within Superstructures not fitted with Class I Closing Appliances TONNAGE WELL FOR <sup>d</sup> BND | TONNAGE OPENING CLOSED BY PORTABLE STEEL PLATE WITH HOOK BOLTS                  |
| UPPER BRIDGE BULK <sup>OS</sup> FOR <sup>d</sup>  | DOUBLE HINGED STEEL DOORS CAPABLE OF BEING OPERATED FROM BOTH SIDES             |
| Deckhouses on Flash Deck Ships ON SHELTER DECK AFT  | ONE STEEL DOOR & THREE WOOD DOORS ALL CAPABLE OF BEING OPERATED FROM BOTH SIDES |



# PARTICULARS OF PROTECTION TO OPENINGS, ETC.

The following diagrams should be used to indicate the positions of cargo and coaling hatchways, gangway, cargo and coaling ports, ventilators, companionways, etc., which would affect the seaworthiness of the ship:-



Particulars of fiddle, funnel and ventilator coamings, engine room skylight and other openings in machinery casing tops and their means of closing:-

MOTOR CASING OF STRONG STEEL CONSTRUCTION, EFFICIENTLY STIFFENED 500 mm ABOVE BOAT DECK  
 FUNNEL STEPPED DIRECTLY ON CASING TOP.  
 VENTILATORS - 2 @ 500 mm DIA X 10 mm THICK X 800 mm ABOVE CASING TOP  
 E. R. SKYLIGHT OF STEEL STRONGLY CONSTRUCTED WITH HINGED STEEL FLAPS EFFICIENTLY SECURED

Particulars of Flush Bunker Scuttles:-

NONE

Particulars of Companionways:-

"A" DOOR GIVING ACCESS TO STAIRWAY LEADING TO TWEEN DECK PASSENGER SPACE  
 STEEL HINGED DOOR 1540 mm X 680 mm SILL 610 mm HIGH.  
 "B" DOOR IN POOP HOUSE GIVING ACCESS TO STAIRWAY LEADING TO CREWS' ACCOMMODATION  
 HINGED WOOD DOOR 1540 mm X 610 mm SILL 360 mm HIGH.  
 BOTH DOORS CAPABLE OF BEING OPERATED FROM BOTH SIDES.

Particulars of Ventilators in exposed positions on freeboard and superstructure decks:-

| DIST. N° | N° | M/M DIA   | M/M THE | M/M HGT | POSITION        | LEADING TO                | DIST. N° | N° | M/M DIA | M/M THE | M/M HGT | POSITION        | LEADING TO             |
|----------|----|-----------|---------|---------|-----------------|---------------------------|----------|----|---------|---------|---------|-----------------|------------------------|
| 1        | 1  | 155       | 7.5     | 910     | FORECASTLE DECK | BOATSWAINS' STORE         | 13       | 2  | 300     | M.V.    | 300     | DYNAMO ROOM TOP | DYNAMO ROOM            |
| 2        | 1  | 250       | 8.0     | 2200    | " "             | GALLEY                    | 14       | 1  | 250     | 8.0     | 1500    | BOAT DECK       | PASSAGEWAY-CREWS' ACC. |
| 3        | 1  | 250       | 8.0     | 2200    | " "             | " "                       | 15       | 4  | 150     | M.V.    | 200     | " "             | ACCOMMODATION          |
| 4        | 6  | 200x30 GN | 916     | " "     | " "             | LAVATORIES, SHOWERS, ETC. | 16       | 1  | 360     | 9.0     | 1500    | " "             | CREWS' ACCOM. PASSAGE  |
| 5        | 2  | 305       | 8.5     | 2200    | " "             | N°1 HOLD & TWEEN DK       | 17       | 2  | 150     | M.V.    | 200     | POOP DECK       | STEERING GEAR SPACE    |
| 6        | 2  | 200x30 GN | 760     | " "     | SHELTER DECK    | SHOWERS ETC.              |          |    |         |         |         |                 |                        |
| 7        | 4  | 305       | 8.5     | 910     | " "             | N°1 & 2 HOLDS & TWN DKS   |          |    |         |         |         |                 |                        |
| 8        | 2  | 125       | 7.5     | 2550    | BRIDGE DECK     | STOREROOMS                |          |    |         |         |         |                 |                        |
| 9        | 4  | 150       | M.V.    | 200     | " "             | W.C & BATHROOMS           |          |    |         |         |         |                 |                        |
| 10       | 2  | 150       | M.V.    | 1000    | SHELTER DECK    | ENGINEERS' STORES         |          |    |         |         |         |                 |                        |
| 11       | 2  | 305       | 8.5     | 2860    | BOAT DECK       | N°2 HOLD & TWEEN DK       |          |    |         |         |         |                 |                        |
| 12       | 1  | 250       | 8.0     | 700     | DYNAMO ROOM TOP | PASSAGEWAY-CREWS' ACC.    |          |    |         |         |         |                 |                        |

VENTILATORS EFFICIENTLY SUPPORTED AS REQUIRED  
 MIDSHIP ACCOM. & ACCOM. IN POOP VENTILATED BY MECHANICAL MEANS  
 ALL VENTS SUPPLIED WITH G.S METAL CAPS AND CANVAS COVERS

Particulars of Air Pipes in exposed positions on freeboard, raised quarter, or superstructure decks:-

| N° | POSITION        | M/M DIA | LEADING TO             | N° | POSITION     | M/M DIA | LEADING TO              |
|----|-----------------|---------|------------------------|----|--------------|---------|-------------------------|
| 1  | FORECASTLE DECK | 70      | FORE PEAK TANK         | 2  | SHELTER DECK | 70      | D.B. WING BALLAST TANKS |
| 2  | " "             | 60      | FRESH WATER TANK       | 2  | POOP DECK    | 50      | COFFERDAM               |
| 2  | SHELTER DECK    | 70      | N°1 D.B. TANK          | 2  | " "          | 50      | ENG. RM. D.B. TANKS     |
| 2  | " "             | 70      | D.B. WING BALLAST TANK | 2  | " "          | 50      | ENG. RM. DRY TANKS      |
| 2  | " "             | 50      | COFFERDAM              | 2  | " "          | 60      | DRINKING WATER TANKS    |
| 1  | " "             | 70      | D.B. OIL FUEL TANK     | 2  | " "          | 60      | AFTER PEAK TANK         |
| 1  | " "             | 70      | " "                    | 1  | " "          | 50      | RUDDER TRUNK            |

AIR PIPES TO OIL TANKS  
 FITTED WITH PERFORATED PLATES AND HINGED COVERS  
 REMAINDER OF AIR PIPES  
 FITTED WITH HINGED COVERS  
 ALL HINGED COVERS  
 SECURED BY SPRING CLIP  
 ALL AIR PIPES 460 mm HIGH ABOVE WOOD DECK

Particulars of Gangway Cargo and Coaling Ports:-

NONE

Naiko. 18 AUG 1953

Particulars of Scuppers and Sanitary Discharge Pipes:-

ALL SANITARY DISCHARGES ARE FROM SPACES ABOVE FREEBOARD DECK AND DISCHARGE TO A COLLECTOR PIPE FITTED WITH A S.D.A.N.R. VALVE AT SHIPS' SIDE AND CONTROLLED FROM ACCESSIBLE POSITION ABOVE SHELTER DECK AND FITTED WITH INDICATORS  
 DISCHARGES FROM SHOWER IN PASSENGER TWEEN DECK DISCHARGE TO DOUBLE BOTTOM COFFERDAM WHICH IS DRAINED BY BILGE PUMP.  
 SCUPPERS FROM BOAT & UPPER BRIDGE DECK DISCHARGE ON POOP & LOWER BRIDGE DECKS RESPECTIVELY  
 SCUPPERS FROM FORECASTLE, LOWER BRIDGE & POOP DECKS DISCHARGE TO COLLECTOR PIPES  
 SCUPPERS FROM SHELTER DECK DISCHARGE DIRECTLY OVERBOARD.  
 SCUPPERS FROM TWEEN DECK CLEAR OF MACHINERY SPACE DISCHARGE TO BILGES WITH S.D.A.N.R. VALVES CONTROLLED FROM ABOVE FREEBOARD DECK IN CARGO SPACE AND IN PASSENGER SPACE AT FREEBOARD DECK.  
 SCUPPERS FROM RAISED QUARTER DECK DISCHARGE TO MOTOR ROOM BILGES AND ARE CONTROLLED BY S.D.A.N.R. VALVES AT RAISED QUARTER DECK.  
 TONNAGE WELL AFT AND AFT END N°1 TWEEN DECK ARE FITTED WITH 2-6" S.D.A.N.R. VALVES CONTROLLED FROM AN ACCESSIBLE POSITION ABOVE SHELTER DECK AND FITTED WITH OPEN & SHUT INDICATORS.

Particulars of Side Scuttles:-

SIDE SCUTTLES FITTED ON SHELL IN WAY OF N°1 TWEEN DECK FORECASTLE, BRIDGE AND POOP OF BRASS STRONGLY CONSTRUCTED AND FITTED WITH HINGED DEADLIGHTS

Vertical distance of Sill of lowest Side Scuttle above top of keel 4.40 metres

Particulars of Guard Rails:-

GUARD RAILS ON FORECASTLE DECK, POOP DECK AND ON SHELTER DECK FORWARD AND AFT OF BRIDGE. 1000 mm HIGH 3 RAILS STANCHIONS SPACED 1300 mm APART.

Particulars of Gangways, Lifelines, etc.:-

NONE

## Particulars of Freeing Arrangements.

|                  | Length of Bulwark | Height of Bulwark     | Size of Freeing Ports | Number each side | Area each side | Rule area each side |
|------------------|-------------------|-----------------------|-----------------------|------------------|----------------|---------------------|
| After Well ...   | NONE              | SEE GUARD RAILS ABOVE |                       |                  |                |                     |
| Forward Well ... |                   |                       |                       |                  |                |                     |

State position of each freeing port ... (After Well:-

(F. and A. position and height above deck edge) (Forward Well:-

State whether the freeing ports are fitted with shutters, bars, or rails, and give particulars of such:-

Additional area where sheer is less than standard.



PARTICULARS OF PROTECTION TO OPENINGS, ETC.

| HATCHWAYS ON FREEBOARD AND SUPERSTRUCTURE DECKS. |                      |                    |  |                   |           |                    |             |  |  |
|--|----------------------|--------------------|--|-------------------|-----------|--------------------|-------------|--|--|
| SHELTER DECK                                     |                      |                    |  |                   | MAIN DECK |                    | F'CLE DECK  |  |  |
| Description of Hatchway                          | Nº 1 HATCH           | Nº 2 HATCH         | TONNAGE HATCH FORWARD  | TONNAGE HATCH AFT |           | Nº 1 HATCH         | Nº 2 HATCH  |  | HATCH TO STORE                                       |
| Dimensions of Hatchway                           | 6050 x 3600          | 6050 x 3600        | 1200 x 3600  | 1200 x 3600       |           | 6050 x 3600        | 8116 x 3600 |  | 650 x 600  |
| COAMINGS   | Height above Deck    | 760 mm             | 230 mm   | 230 mm            |           | 540 mm             | 230 mm      |  | 200 mm   |
|  | Thickness            | 10.5 mm            | 10.5 mm  | 10.5 mm           |           | 10.5 mm            | 10.5 mm     |  | 10.5 mm  |
|  | Stiffeners           | 180 x 75 x 8 B.A   |  |                   |           |                    |             |  | 200 x 75 x 9 B.A                                     |
|  | Brackets, Stays      | 180 x 8 BULB PLATE |  |                   |           | 8 mm bkts          | 8 mm bkts   |  |  |
| HATCH BEAMS                                      | Number               | 5                  |  |                   |           | 5                  | 7           |  |  |
|  | Spacing              | 1000 mm            |  |                   |           | 1000 mm            | 1100 mm     |  |  |
|  | Scantling and Sketch | 150 x 12 I 240 x 8 |  |                   |           | 150 x 12 I 240 x 8 |             |  |  |
| FORE AND AFTERS                                  | Bearing Surface      | 75 mm              |  |                   |           | 75 mm              | 75 mm       |  |  |
|  | Number               |                    |  |                   |           |                    |             |  |  |
|  | Spacing              |                    |  |                   |           |                    |             |  |  |
| HATCH COVERS                                     | Material             | YANGWOOD           | YANGWOOD   | YANGWOOD          |           | YANGWOOD           |             |  | HINGED STEEL COVER, HEMP. PACKING SECURED BY TOGGLES |
|  | Thickness            | 63 mm              | 63 mm  | 63 mm             |           | 63 mm              |             |  |  |
|  | How fitted           | F & A              | F & A  | F & A             |           | F & A              |             |  |  |
| Spacing of Cleats                                |                      | 600 mm             |  |                   |           | 600 mm             |             |  |  |
|  | Number of Tarpaulins | 2                  | 2 TARPULINS AND EFFICIENT TEMPORARY BATTENING ARRANGEMENT PROVIDED |                   |           | 2                  |             |  |  |

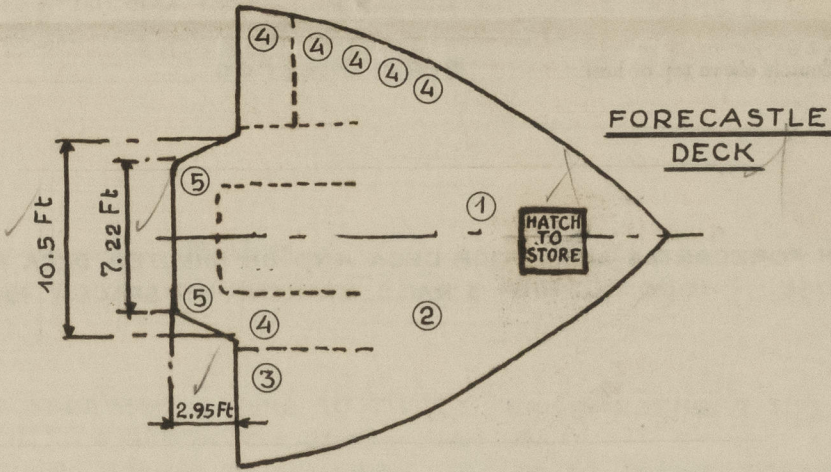
\*Are wood fore and afters steel shod at all bearing surfaces? ☒

Are battens and wedges efficient and in good condition? YES ☒

Are tarpaulins in good condition and in accordance with rule requirements? YES ☒

Are lashings provided in accordance with rule requirements? YES ☒

Particulars of any special features :—



Endorsement at first survey and at surveys for renewal of Certificate :—

The fittings and appliances are in accordance with the particulars shown on this form (or as now modified) and are in good condition.