

5. NOV 1919

303 S.S. STEAMERS

RUDDER AND STERN - FRAME

SCALE $\frac{1}{2}'' = 1$ FOOT.

RUDDER FRAME ---- FORGED IRON

STERN FRAME ---- FORGED IRON OR CAST STEEL

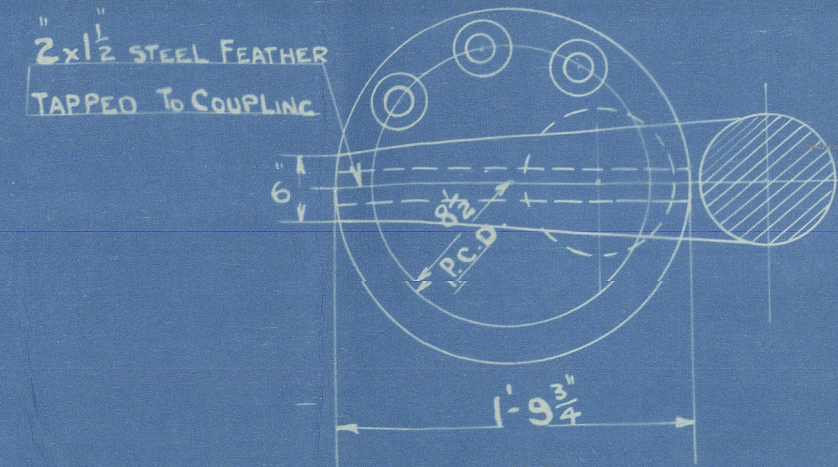
FORGED IRON STERN-FRAME

ALTERNATIVE STEEL CASTING

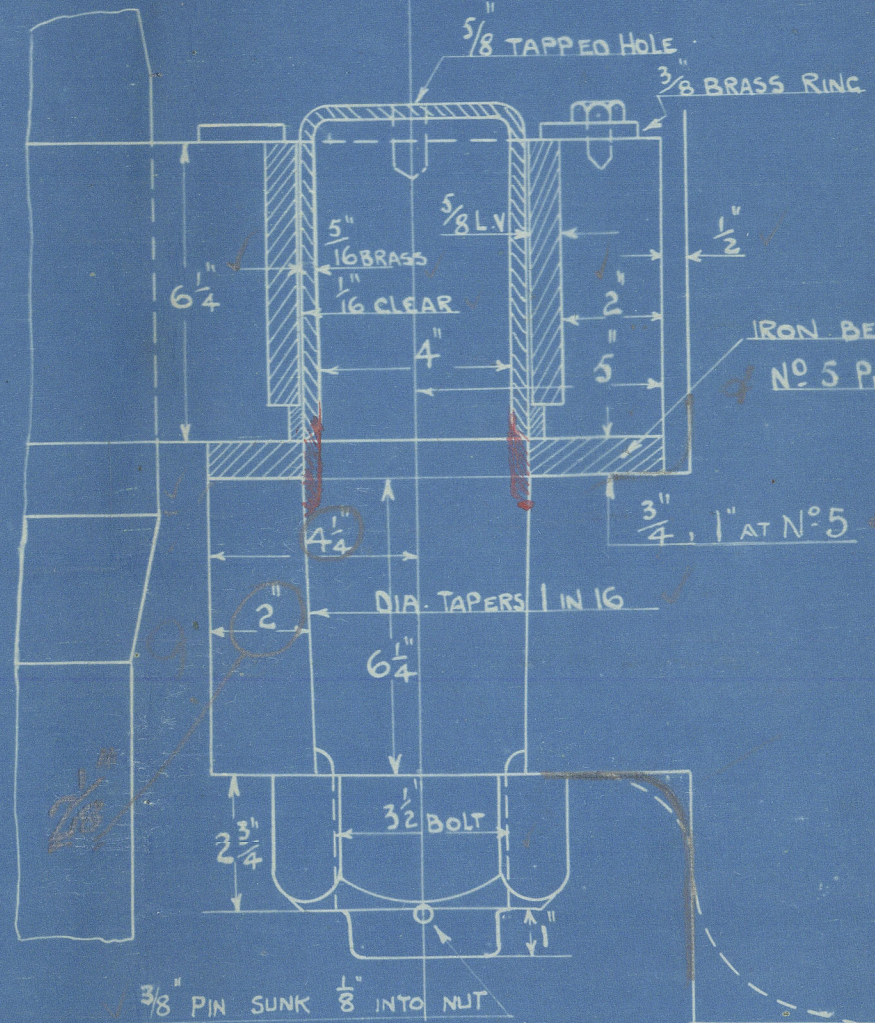
PARTICULARS

LENGTH	303'-0"
DRAFT	20'-3"
SPEED	10½ K.
AREA FROM FORE EDGE OF STOCK	82 ½
C. OF G. FROM CENTRE OF PINS	2.75'

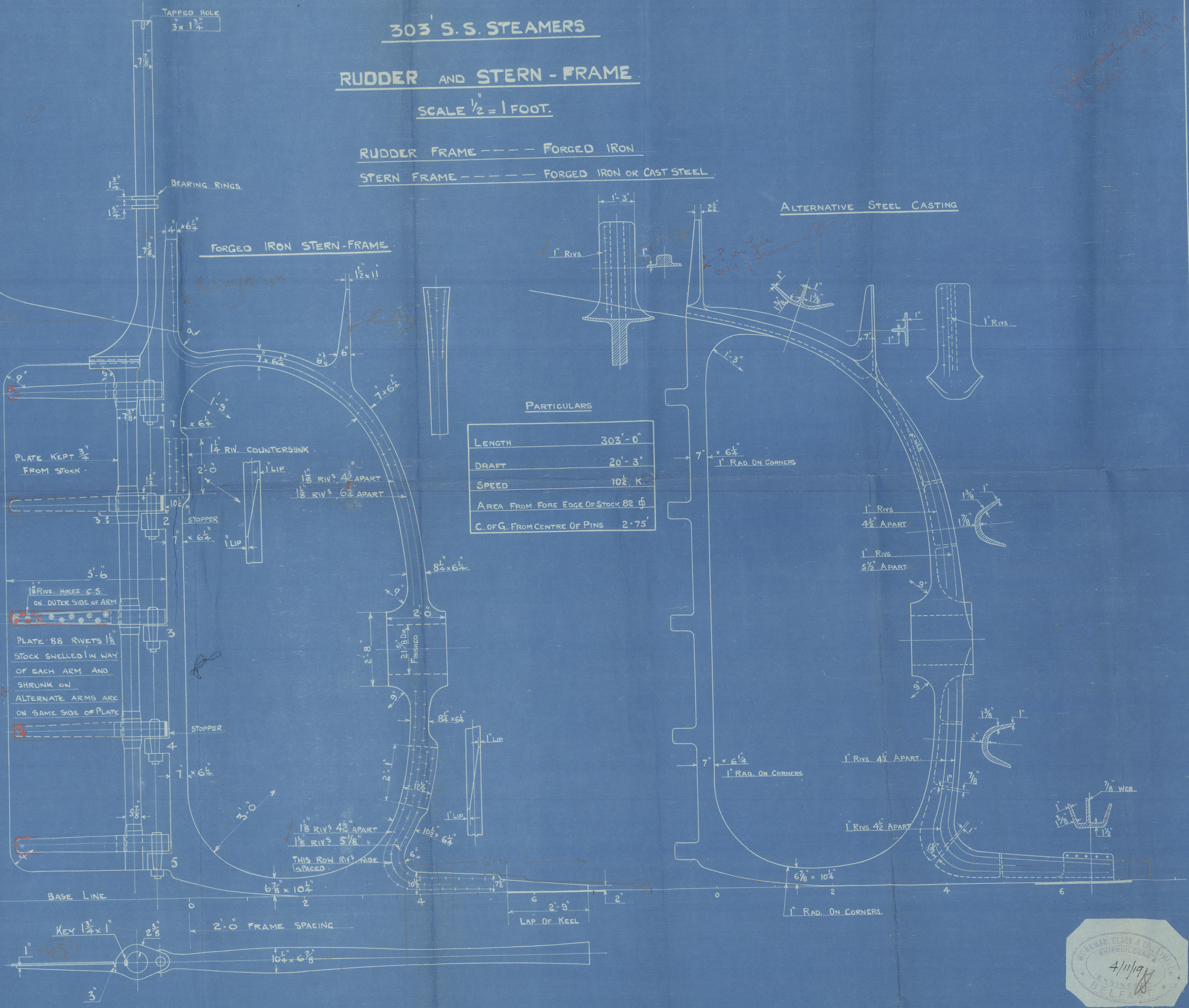
COUPLING
1" = 1 FOOT



6 AT 2" DIA. BOLTS
NUTS AND PINS ON BOTTOM
UPPER FLANGE OF COUPLING 2 THICK
LOWER " " " 2 3/4"



DETAIL OF PINTLES
3" = 1 FOOT



WIDEN- 010327- 0160

Workman Clark Co

303' Vessels

Rudder & Sternframe

(Bag)

SS MAYARI

SS MACABI

SS MANAQUI

SS MARAVI

WORKMAN CLARK & CO

NO 454.5-6-7

RUDDER + STERNFRAME

6 11 19



© 2021

Lloyd's Register

Foundation

010317-010327-0160