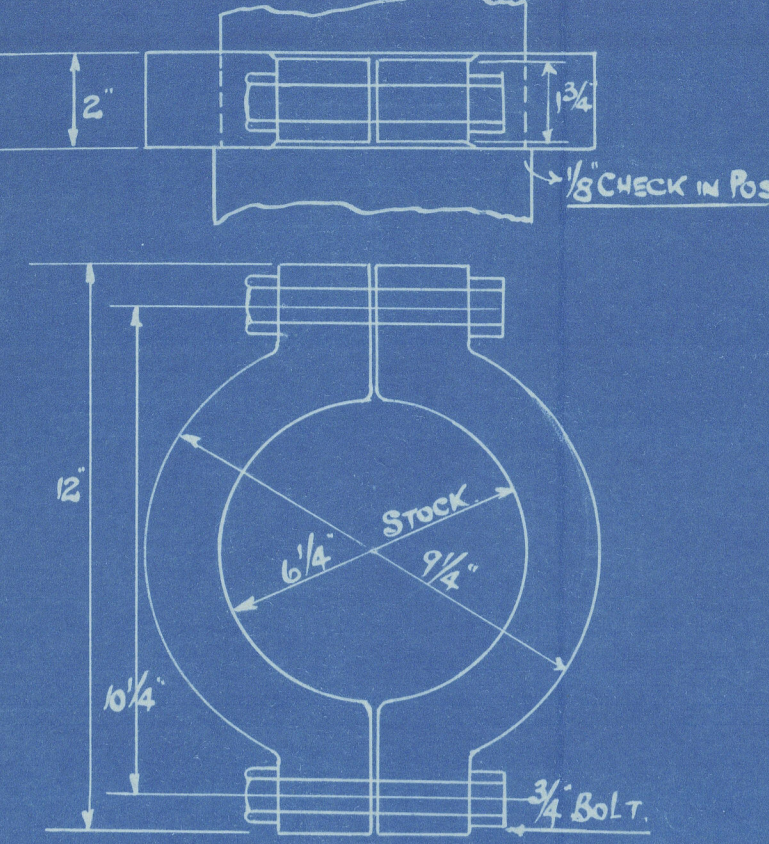


DRAWING NO.
ENQUIRY N° 2479.
S.S. N°
STERNPOST & RUDDER.
SCALE: 1"=1 FOOT.

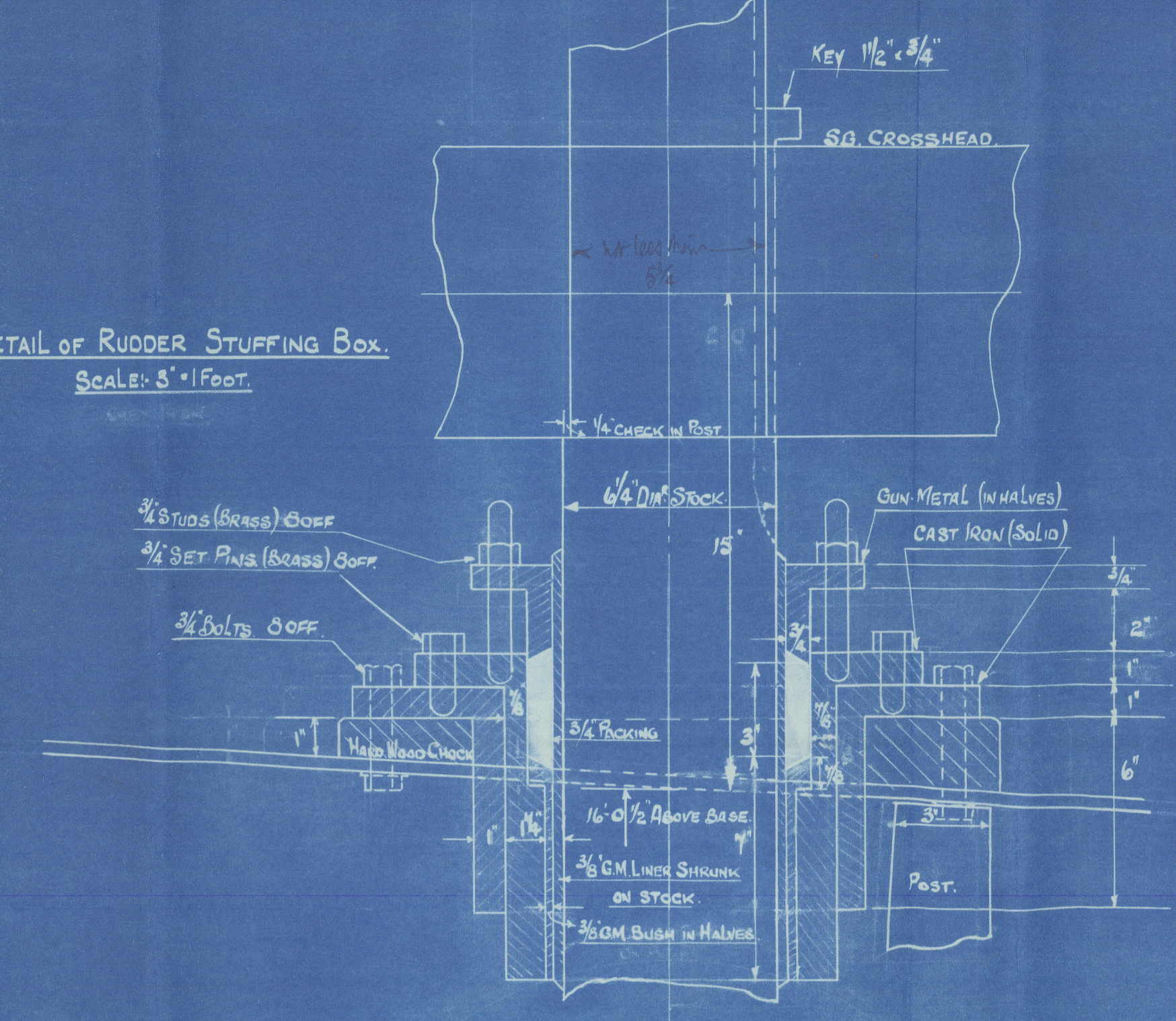
A=D. NOT EXCEEDING 130.
SPEED " " 18 KNOTS.
ALL TO LLOYD'S REQUIREMENTS & TESTS.

SPECIFICATION:-
STERNPOST COMPLETE, BOSS ROUGH BORED, ENDS OF BOSS MACHINED.
RUDDER STOCK & ARMS COMPLETE WITH PINTLES, BUSHES, NUTS & LOCKING PINS AS SHOWN.
BUSHES TO BE FITTED TO STERNPOST.
1 1/2" EYE TO BE SUPPLIED.
STOCK TO BE MACHINED AT HEAD WHERE SHOWN.
STERNPOST TO BE OF BEST HAMMERED SCRAP IRON.

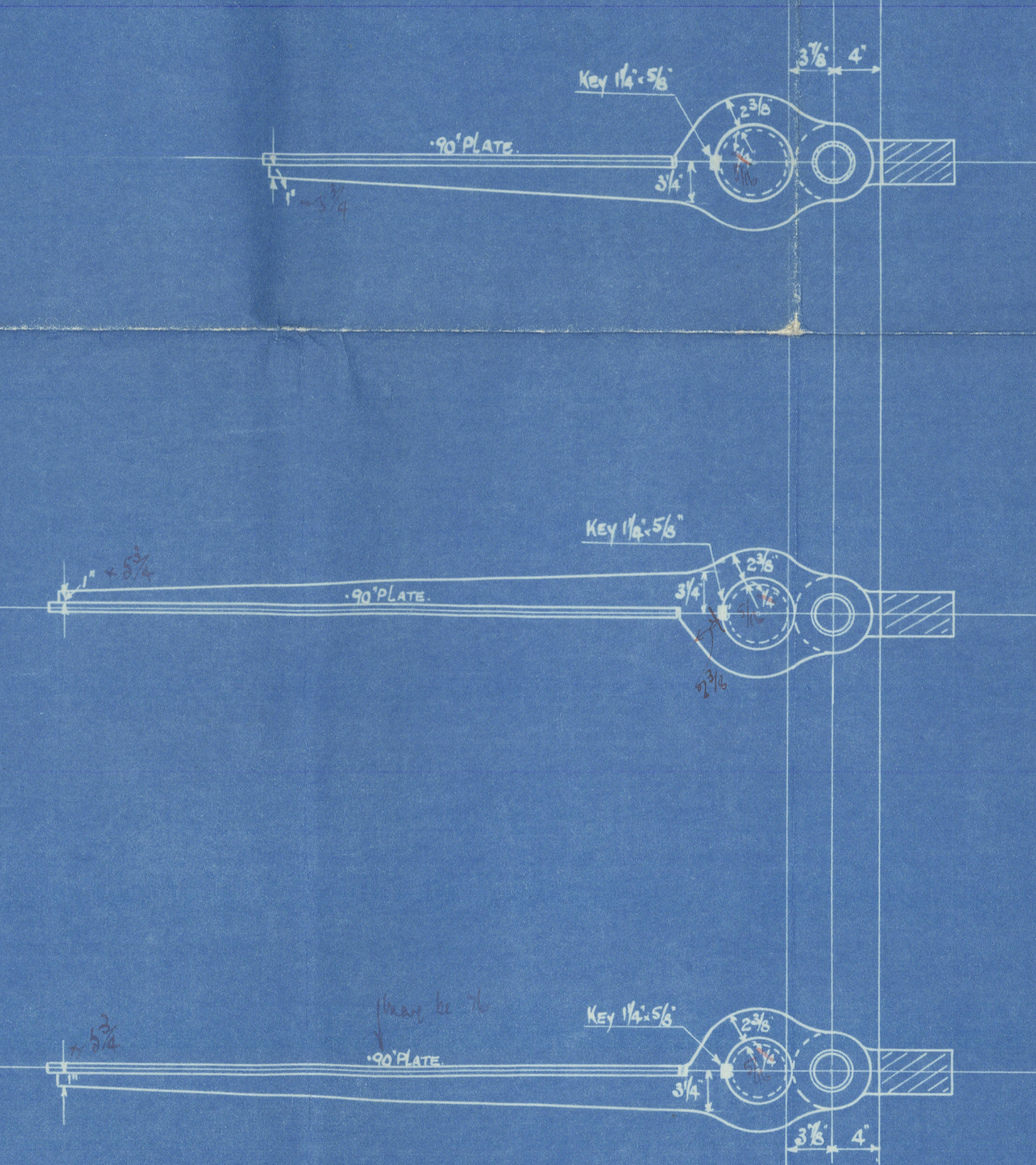
STOPPER COLLAR
SCALE: 3"=1 FOOT
(FORGING)



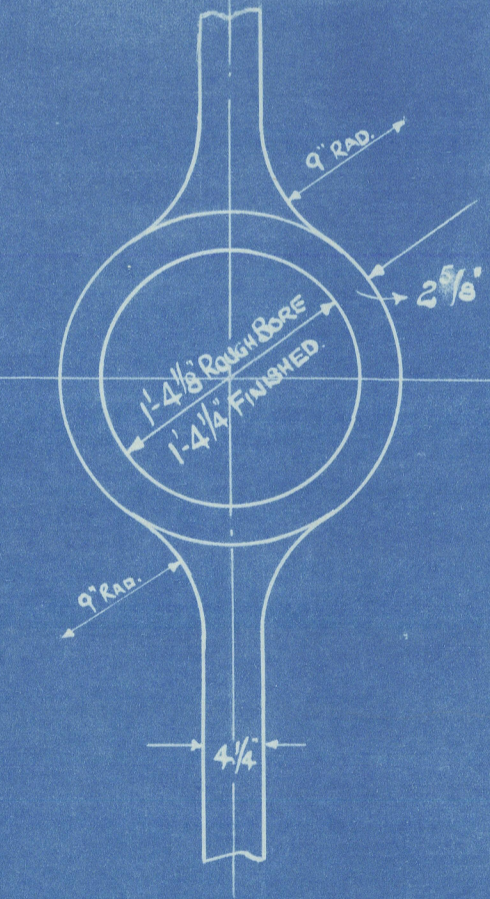
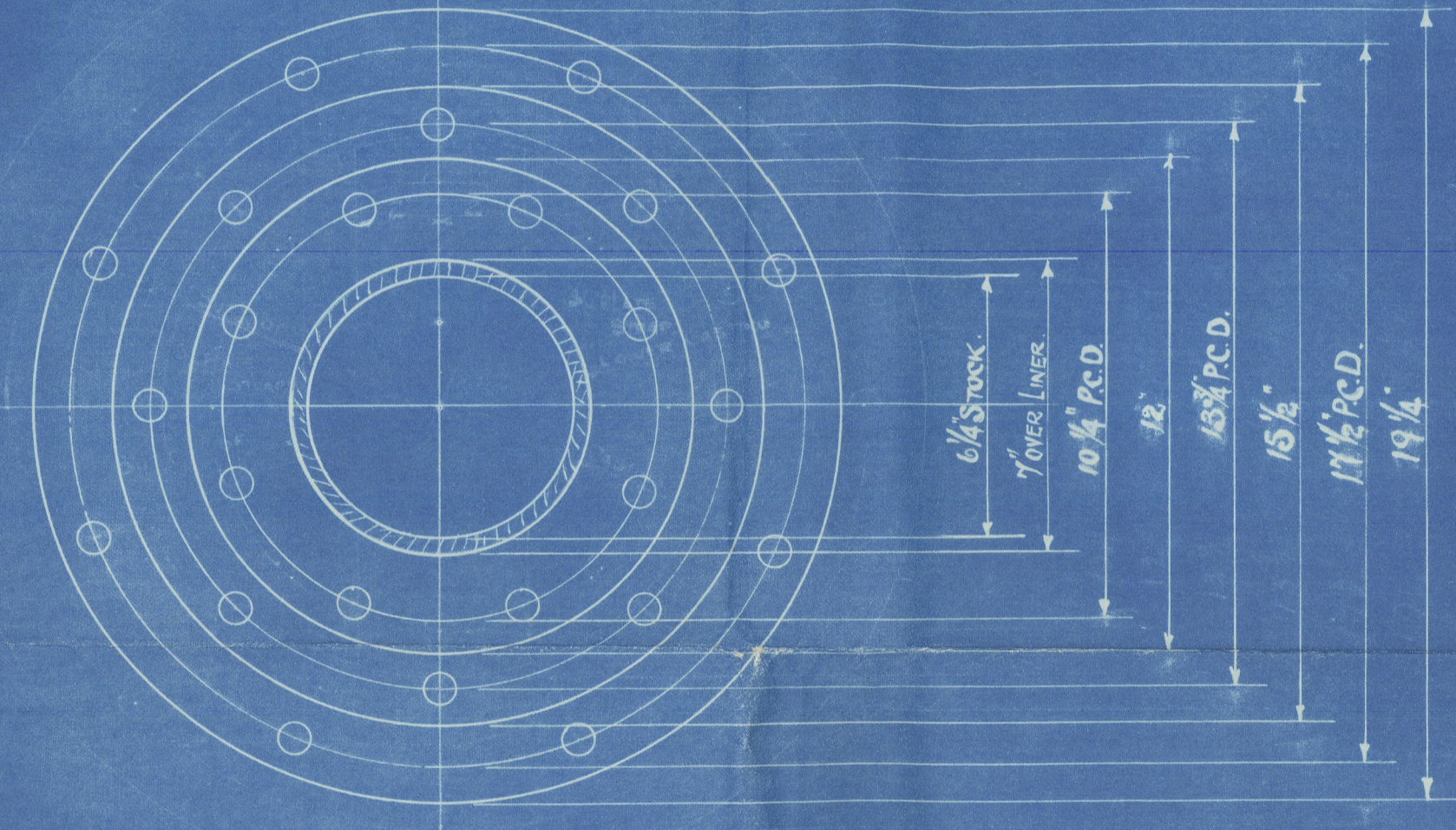
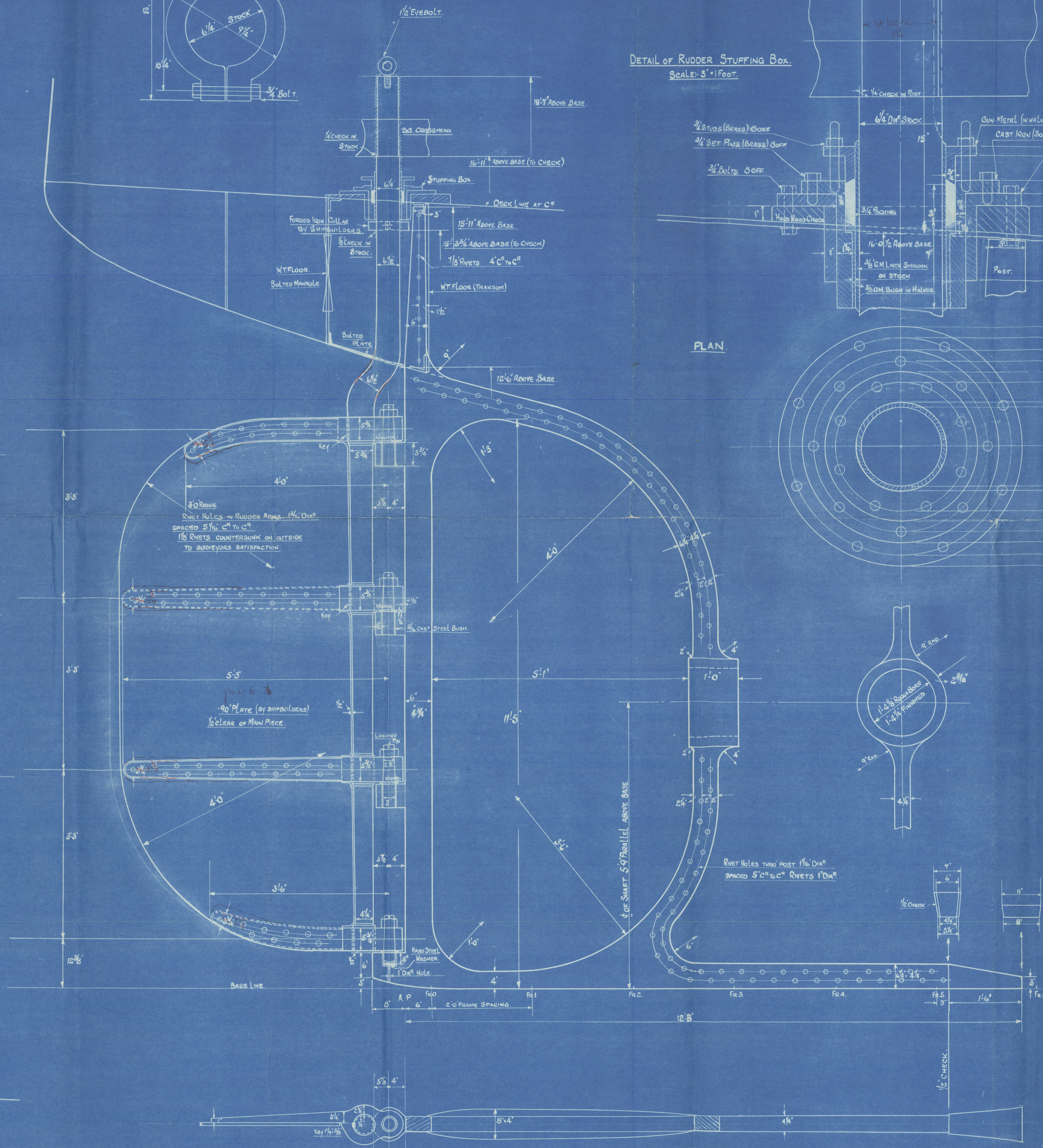
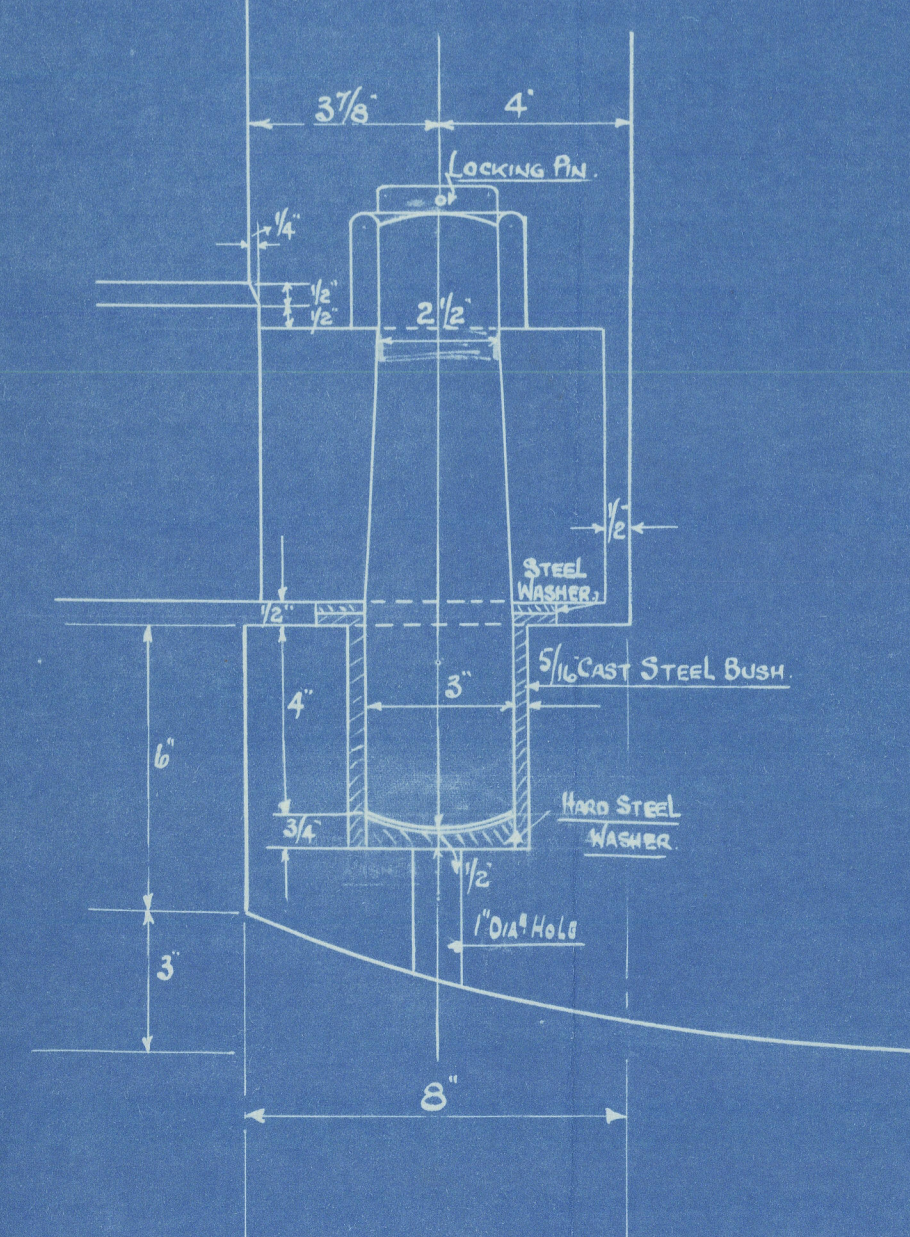
DETAIL OF RUDDER STUFFING BOX.
SCALE: 3"=1 FOOT.



PLAN OF RUDDER ARMS.



DETAIL OF HEEL
SCALE: 3"=1 FOOT.



APPROVED
LLOYD'S REGISTER OF SHIPPING
J. & W. HENDERSON
DATE 3.7.25.

Coaster Construction Co

Nº 124.

Stern Frame & Rudder

M.V. "KYBRA"



© 2021

Lloyd's Register
Foundation

010309-010316-0021