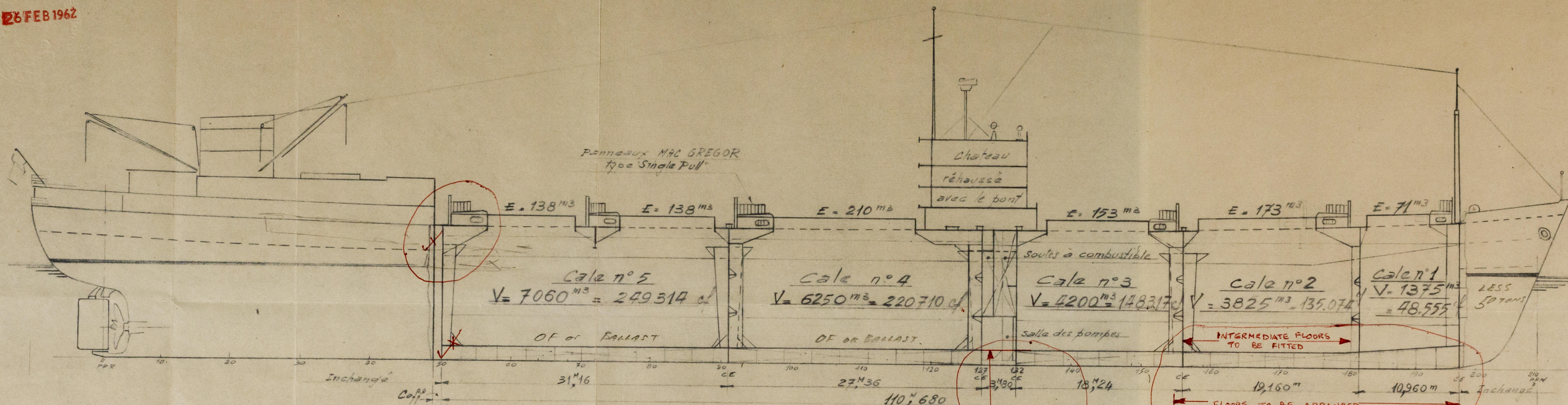
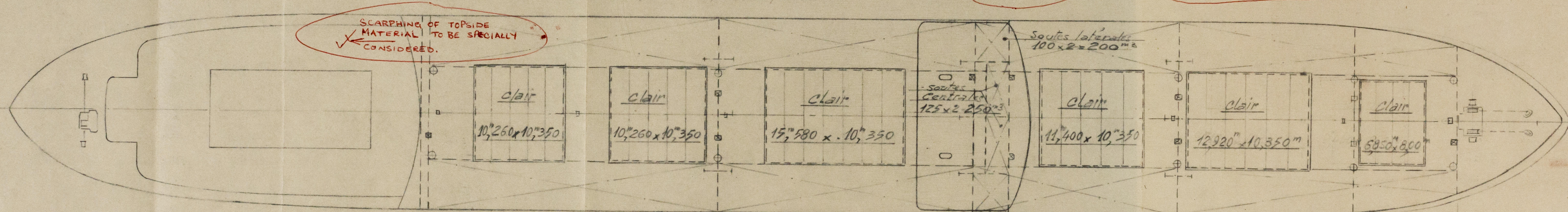


26 FEB 1962

- Vue longitudinale avec coupe dans les cales -

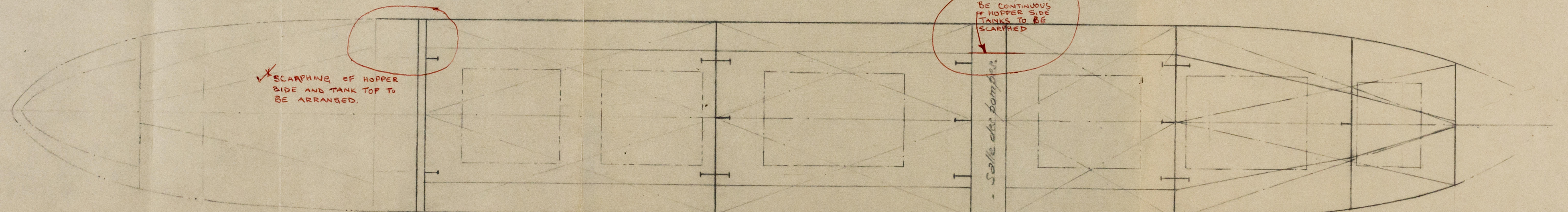


- Vue en plan du pont principal -



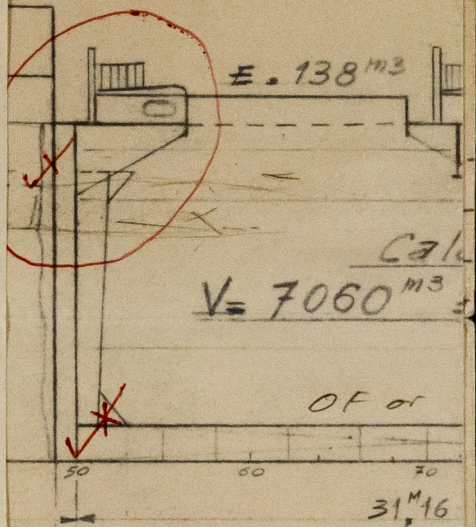
Ballasts supérieurs - 430 x 2 = 860 m³ = 30.365 cf - 375 x 2 = 750 m³ = 26.485 cf - 300 x 2 = 600 m³ = 21.190 cf - 320 x 2 = 640 m³ = 22.600 cf

- Vue en plan des cales -

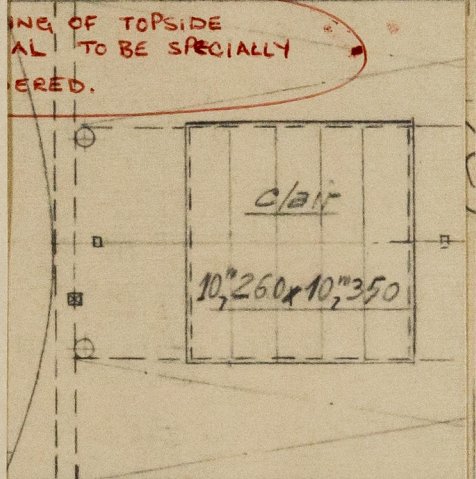


Ballasts inférieurs - 540 x 2 = 1080 m³ = 38.140 cf - 565 x 2 = 1130 m³ = 39.904 cf - 335 x 2 = 670 m³ = 23.660 cf - 282 x 2 = 564 m³ = 19.916 cf

Vue longitudinale

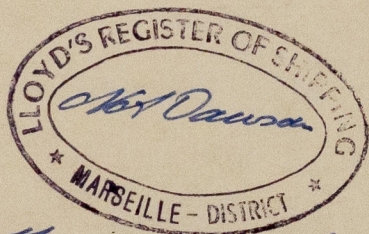
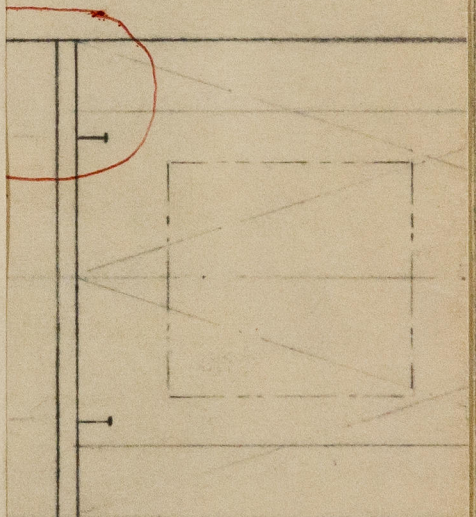


Vue en plan



430 x 2 = 860^m

Vue en plan



Homestead and reports
on 2011 comp.
30/4/62.



© 2021
Lloyd's Register
Foundation