

Triple
London
Bank

PROFILE.

SCALE 3" = ONE FOOT

99.427-0' BP x 60'-9" BE x 32'-8" MLD

UPPER DECK BEAMS (TROW SIZE)

BEAMS 2 BEAMS & HATCH END BEAMS AS AT LENGTH FROM FORWARD 9' 3 1/2" 45' BULL ANGLE KNEES 27' 4 1/2" AT 33 1/2" SPACING.
FORWARD 9' 3 1/2" 51' BULL ANGLE KNEES 27' 4 1/2" AT 27" SPACING 9' 3 1/2" 43' 8 1/2" IN FORECASTLE

THIRD DECK BEAMS (TROW SIZE)

BEAMS 2 BEAMS & HATCH END BEAMS 9 1/2" 3 1/2" 55' BULL ANGLE KNEES 27 1/2" 45' AT 33 1/2" SPACING.
9 1/2" 3 1/2" 55' 27'
BEAMS IN WAY OF DEEP TANKS 9 1/2" 3 1/2" 55' BULL ANGLE KNEES 27 1/2" 45' PLANGED ON EDGE

SECOND DECK BEAMS (TROW SIZE)

BEAMS 2 BEAMS & HATCH END BEAMS 9 1/2" 3 1/2" 55' BULL ANGLE KNEES 27 1/2" 45' AT 33 1/2" SPACING.
9 1/2" 3 1/2" 55' 27'

FORECASTLE DECK BEAMS

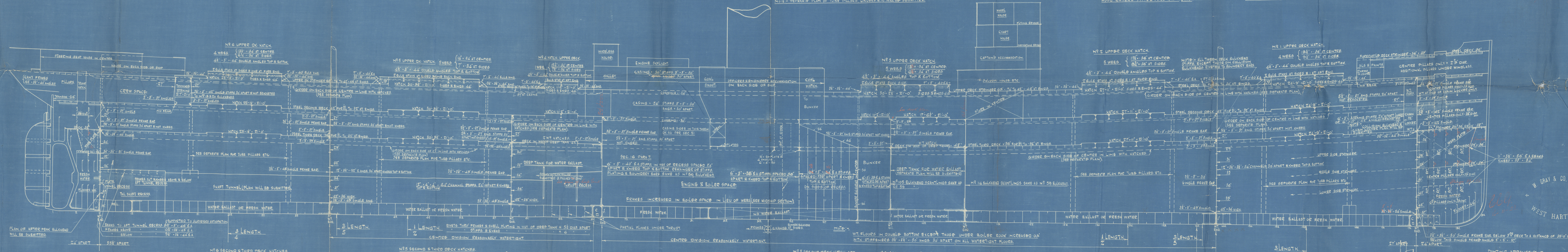
9' 3 1/2" 45' BULL ANGLE KNEES 27' 4 1/2"

NOTE - SEPARATE PLAN OF TUBE PILLARS, GIRDERS ETC WILL BE SUBMITTED.

NOTE - NO HATCH FORD & AFTERS FITTED
WOOD COVERS FITTED FORE & AFT. STUICK

DECK PLATING DOUBLED AT CORNERS OF HATCHWAYS
AND LARGE OPENINGS ON UPPER 2ND & 3RD DECK

W. GRAY & CO. LIMITED
WEST HARTLEPOOL



Plan No. 1963-4
23/1/30

963-4

W. GRAY & CO. LIMITED
WEST HARTLEPOOL

PLAN NO. 24
DRAWN BY
CHECKED BY

963-4

(4) Profile

N^o 964

The Wear Shipyard
Sunderland

"Querimba"

SUNDERLAND RPT. NO. 29014.



© 2021

Lloyd's Register
Foundation

010294 - 010299 - 0140