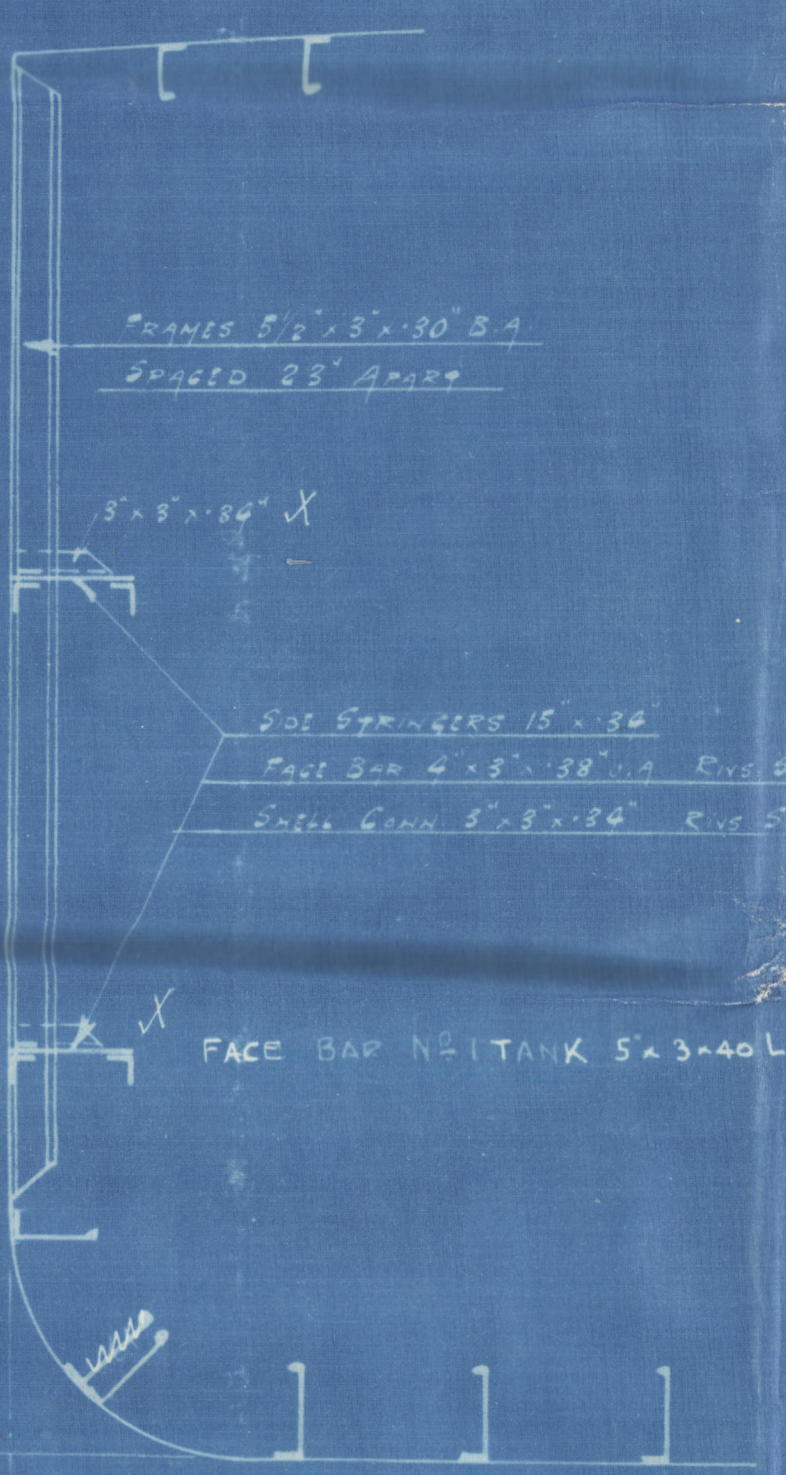
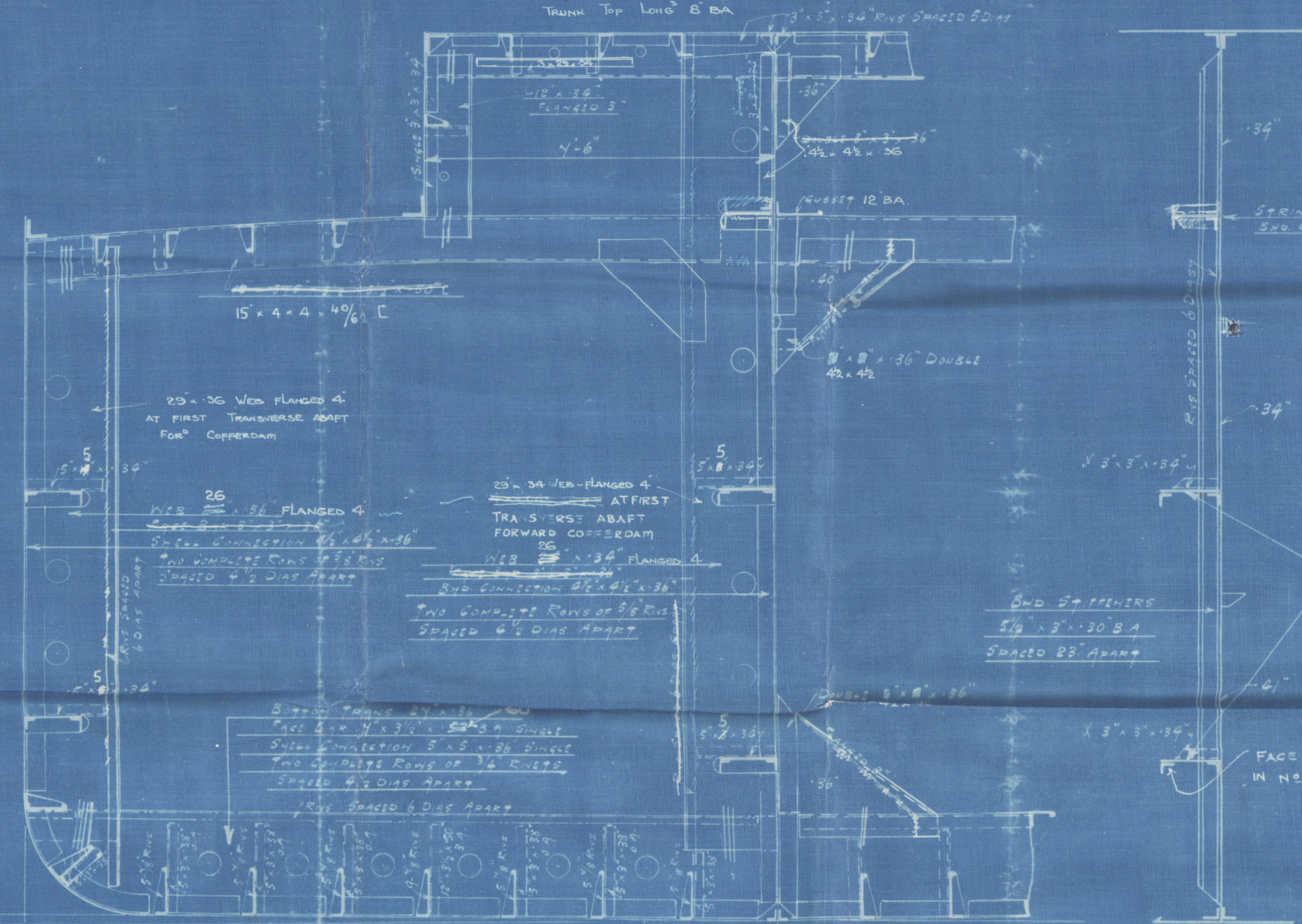


Boyle Stamp
25/2/21

SECTION IN WAY OF INTERMEDIATE FRAMES



SECTION IN WAY OF A 3 TANK



1/2" OTTERHOUND

SHIP N° 121

MIDSHIP SECTIONS OF O.T. TRANS BULKHEADS

DIMENSIONS IN INCHES

SCALE 1/4" = 1 FOOT

BRACKETED COMBINATION SYSTEM

EQUIPMENT TO RULE

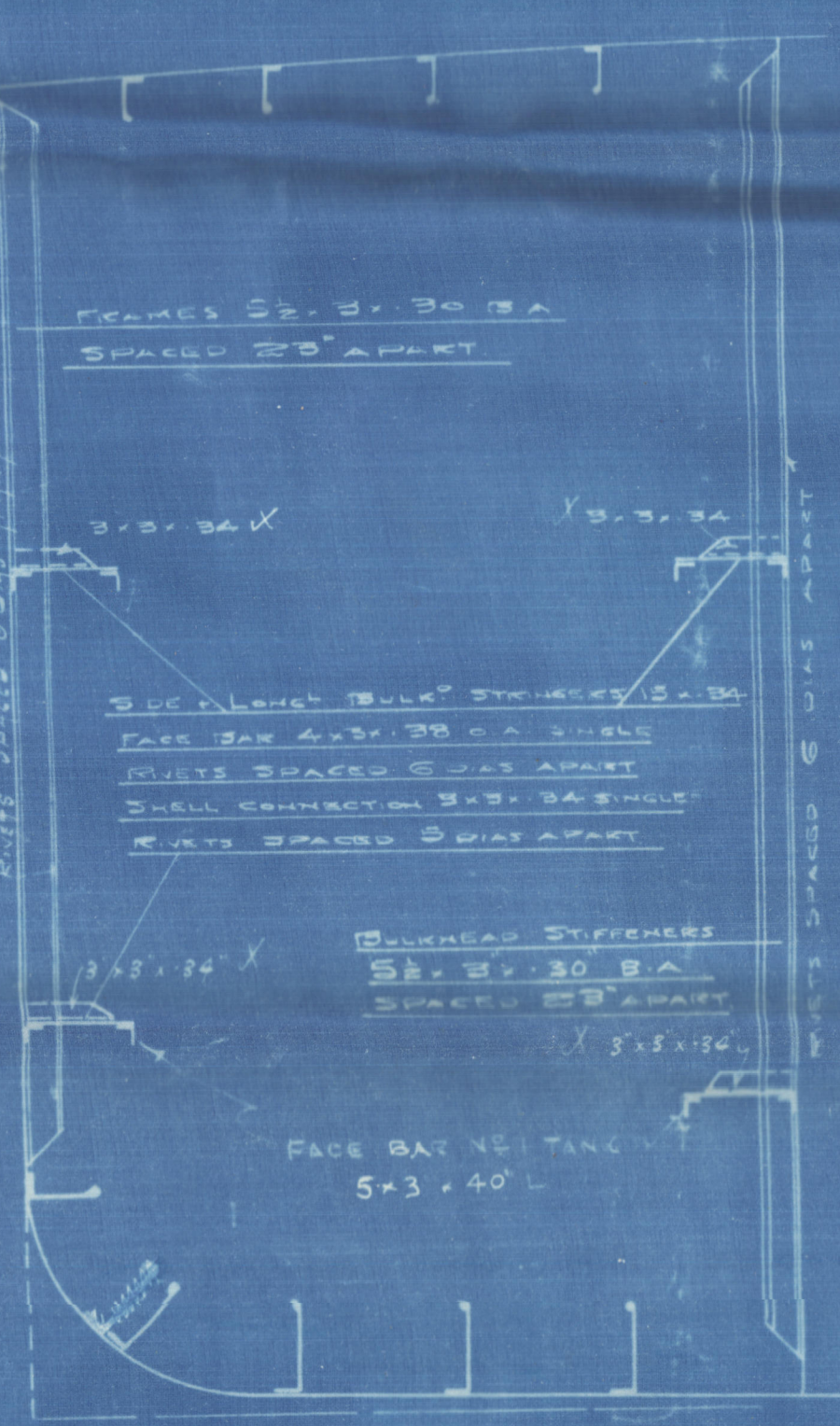
NOTE: BRACKETS ARE TO BE USED INSTEAD OF

BRACKETS IN CASES

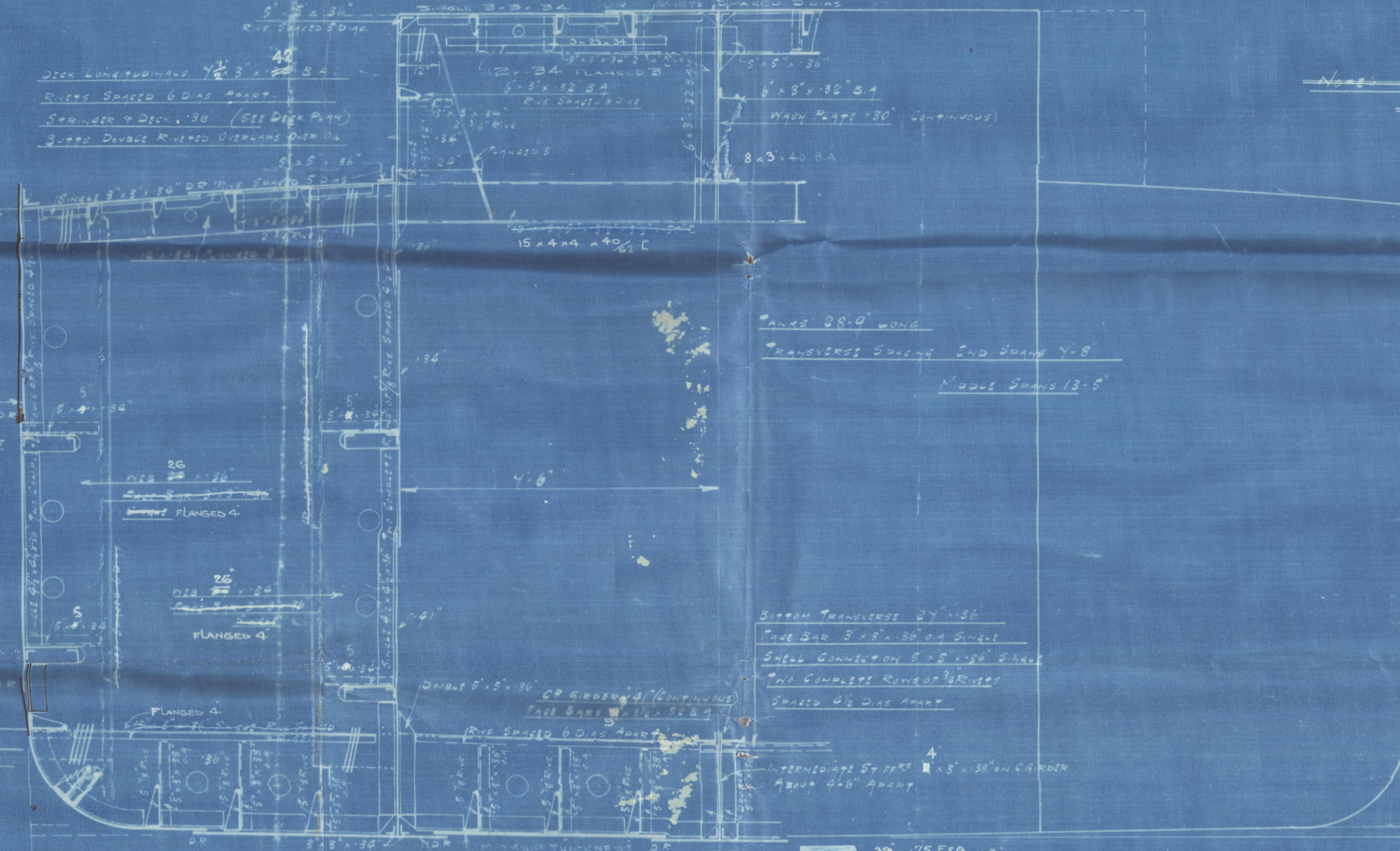
LOOPS' NUMBERS
2850
977
1266

TRANSVERSE AT 15' SPAN
IN LIEU OF TAPPING BRACKET

SECTION IN WAY OF INTERMEDIATE FRAMES



OUTSIDE
42-38 IN WAY OF TRANSVERSE
FRAMING PLATE OF OIL TANKS

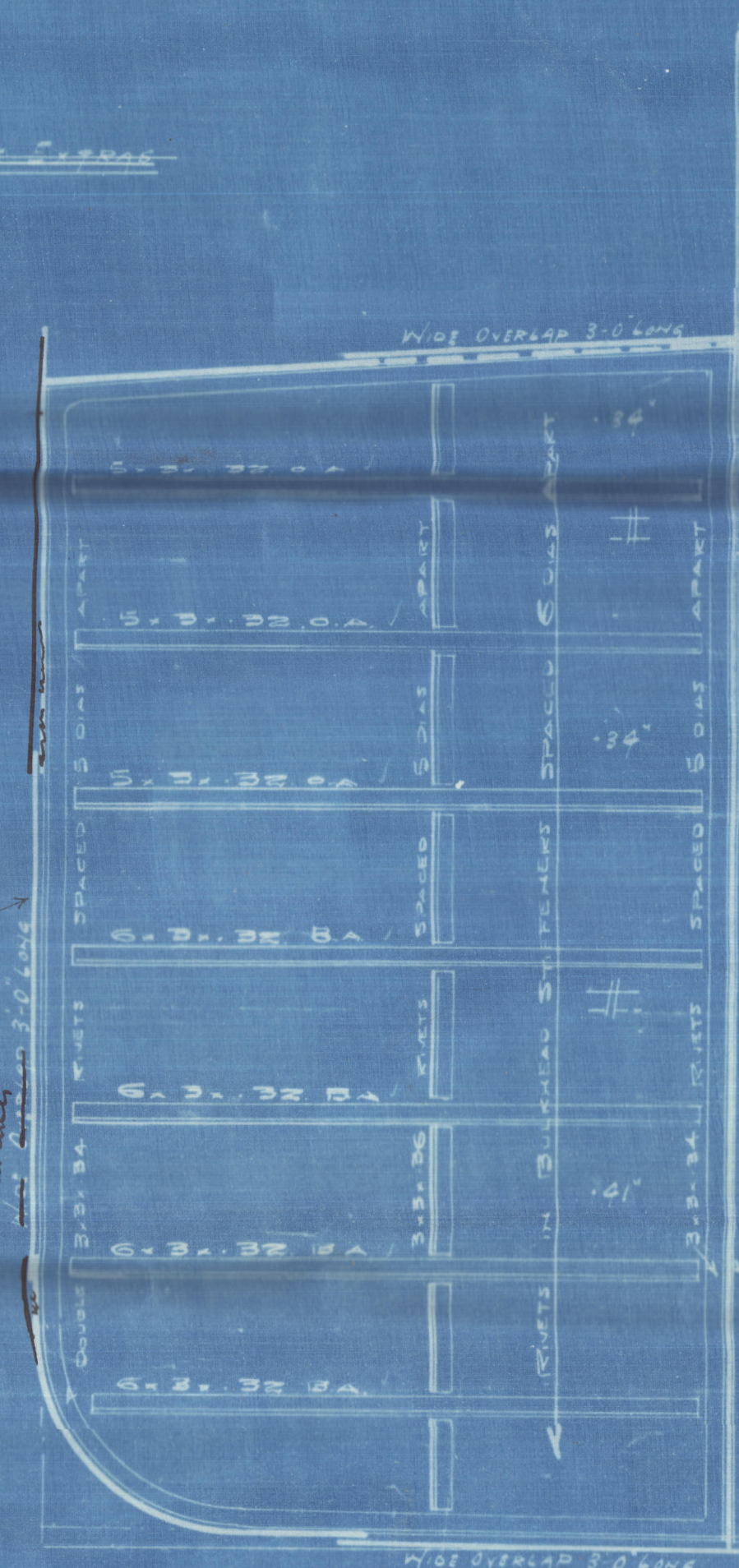


2 STRAKES OF BOTTOM PLATING
IN WAY OF TRANSVERSE FRAMING
TAPING TO COLLISION BULKHEAD

2 STRAKES OF BOTTOM PLATING
IN WAY OF TRANSVERSE FRAMING
TAPING TO COLLISION BULKHEAD

2 STRAKES OF BOTTOM PLATING
IN WAY OF TRANSVERSE FRAMING
TAPING TO COLLISION BULKHEAD

SECTION IN WAY OF A 3 TANK

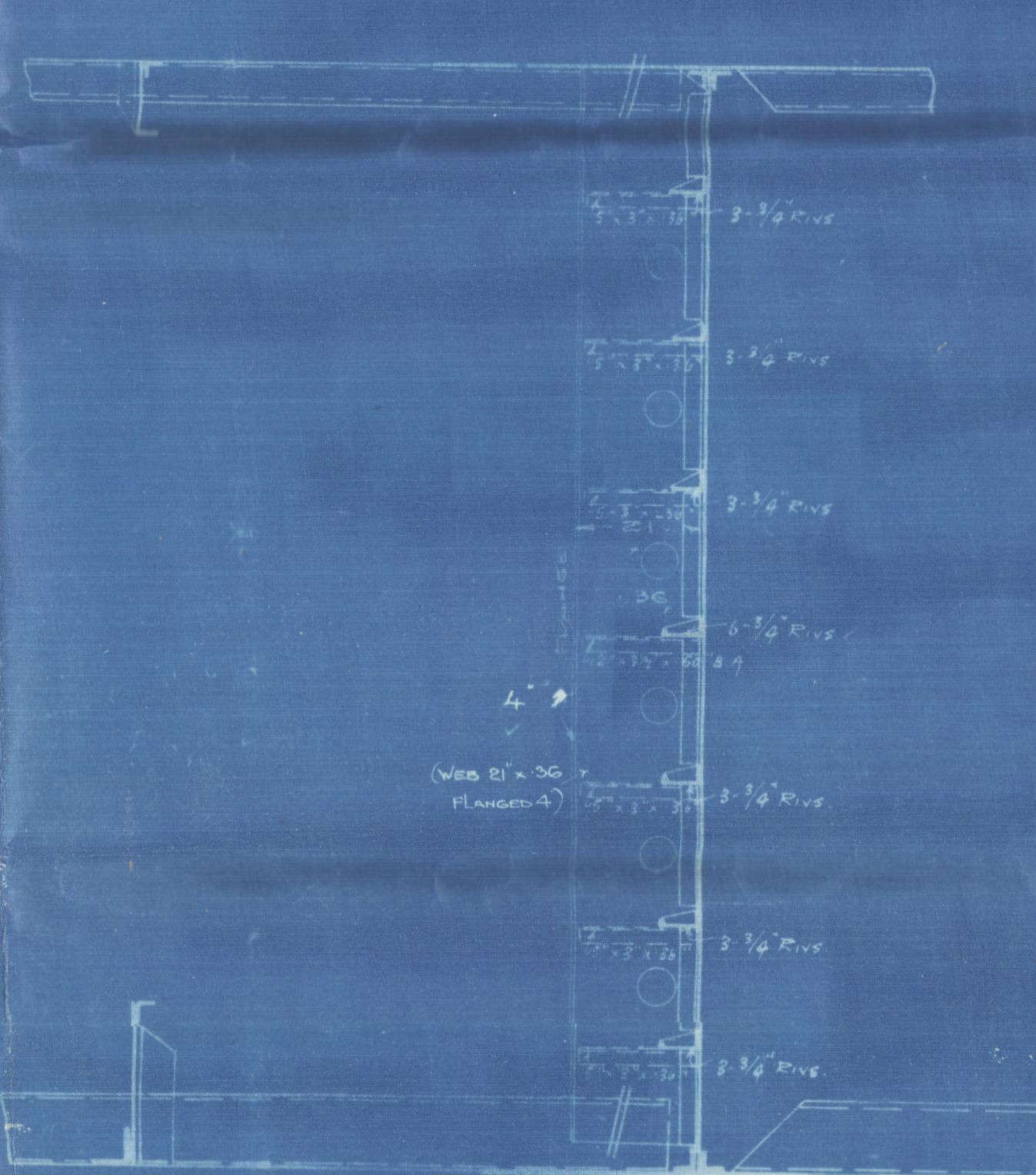


O.T. BULKHEAD AT FREE SIDE OF PUMP ROOM

LOOKING AFT



SECTION IN WAY OF INTERMEDIATE FRAMES



SECTION IN WAY OF INTERMEDIATE FRAMES

THE LLOYD'S REGISTER
S.O. 100
X.1000
13.8.21

Furness S.B. 6° 2'

N° 121

MIDSHIP. SECTION

(AS-BUILT).

S.S. "OTTERHOUND"

Tab. Rpt. h°

S.S. Otterhound
MDB. RPT. No. 13012.



© 2021

Lloyd's Register
Foundation