

# C.C. 2. YARD No'S. 458-9

## "C" TYPE COASTERS.

### STRUCTURAL SECTIONS

SCALE 1/2" = 1 FOOT

DIMENSIONS 140'-0" B.P. x 27'-0" MLD. x 10'-6" 2<sup>ND</sup> DK x 17'-6" UPPER DK.

TO CLASS B.S\* WITH FREEBOARD COASTING SERVICE



#### RIVETING.

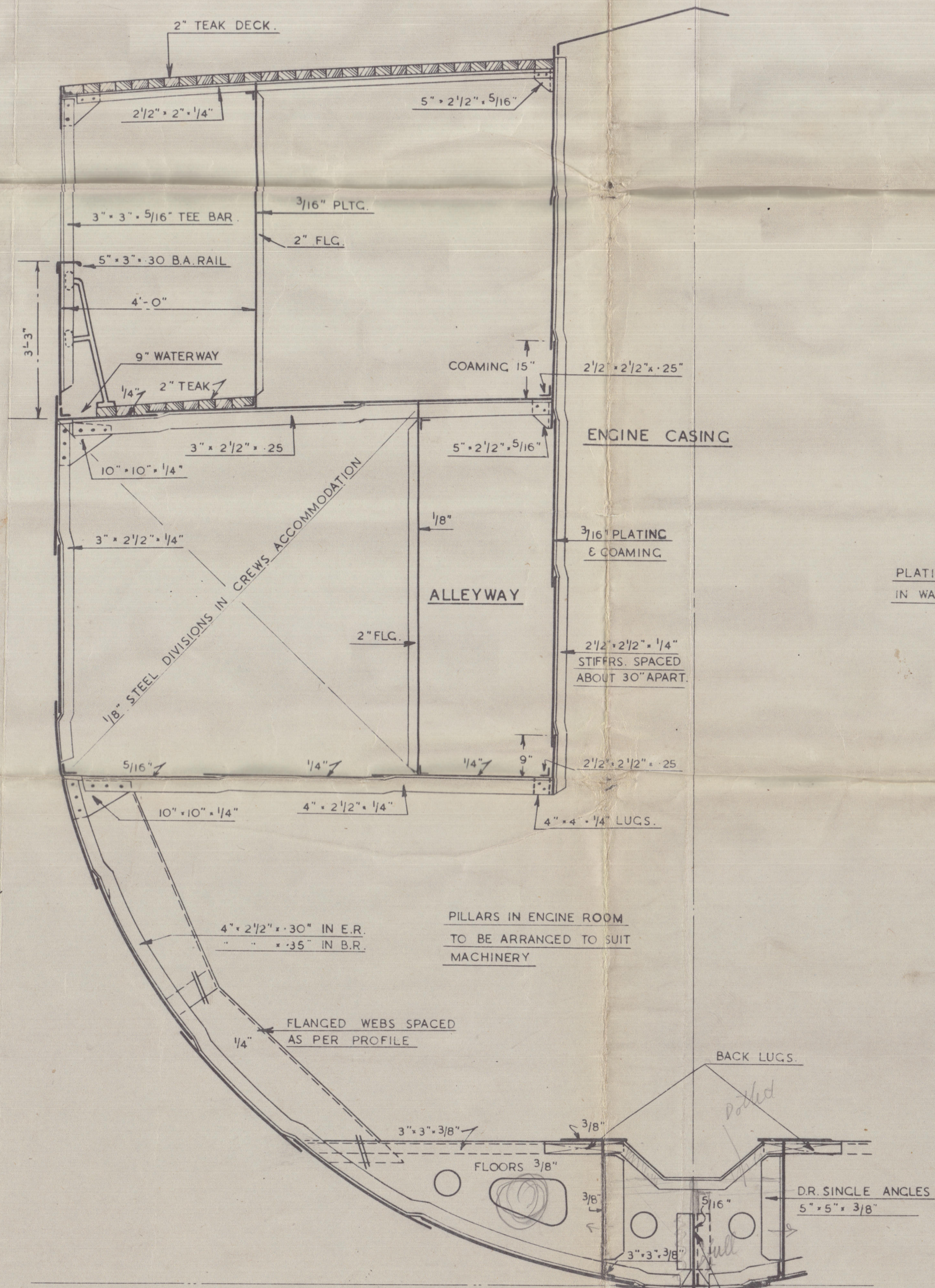
5/8" DIA RIVETS IN SHELL, DECKS, BULKHEADS, DOUBLE BOTTOM, TANKS, FLOORS, ENGINE FLOORS, & HATCHES.  
7/8" DIA RIVETS IN ENGINE SEAT TOP PLATE & STERNFRAME.  
1/2" DIA RIVETS IN ENGINE & BOILER CASING & DECKHOUSES.

7 OCT 1944

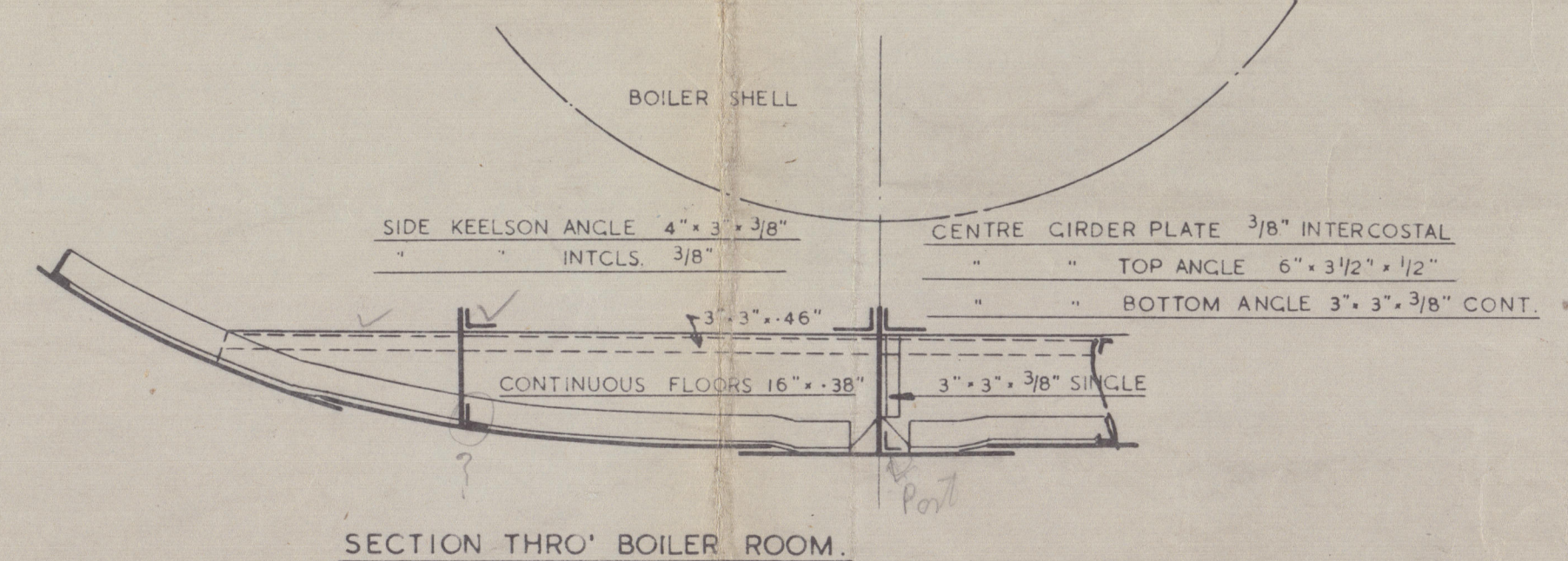
*Approved  
7/10/44  
[initials]*

#### EQUIPMENT.

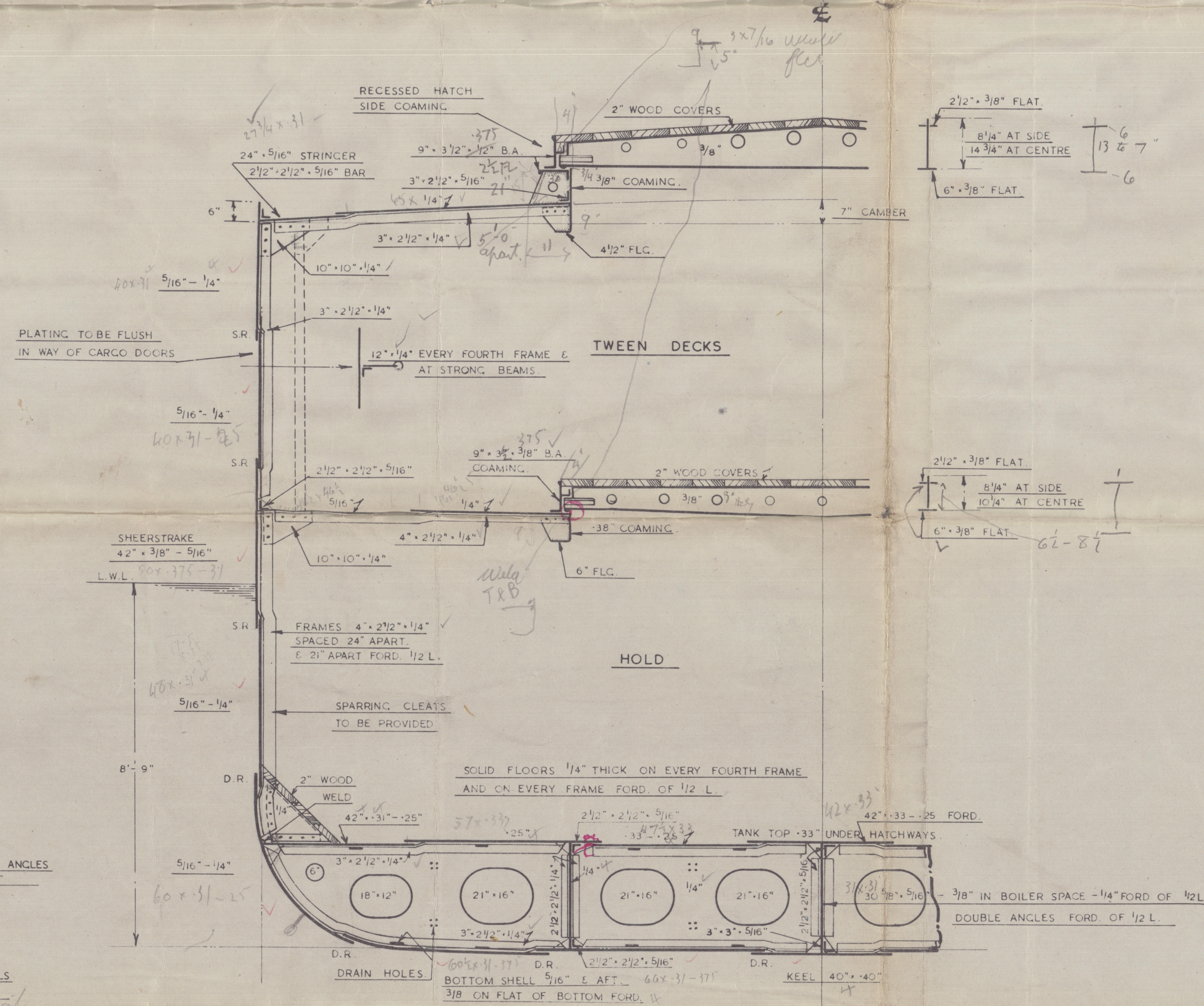
2 BOWER ANCHORS EACH 11 1/4 CWT. STOCKLESS.  
1 STREAM ANCHORS 4 1/4 CWT. EX STOCK  
165 FATHOMS 1 3/16" STUD LINK CABLE  
1- 75 " 2 3/4" STEEL WIRE ROPE  
1- 60 " 2 3/4" " " "  
1- 120 " 4 1/2" MANILLA OR 90 FMS. 6"  
1- COIL 1 1/2" HEAVING LINE



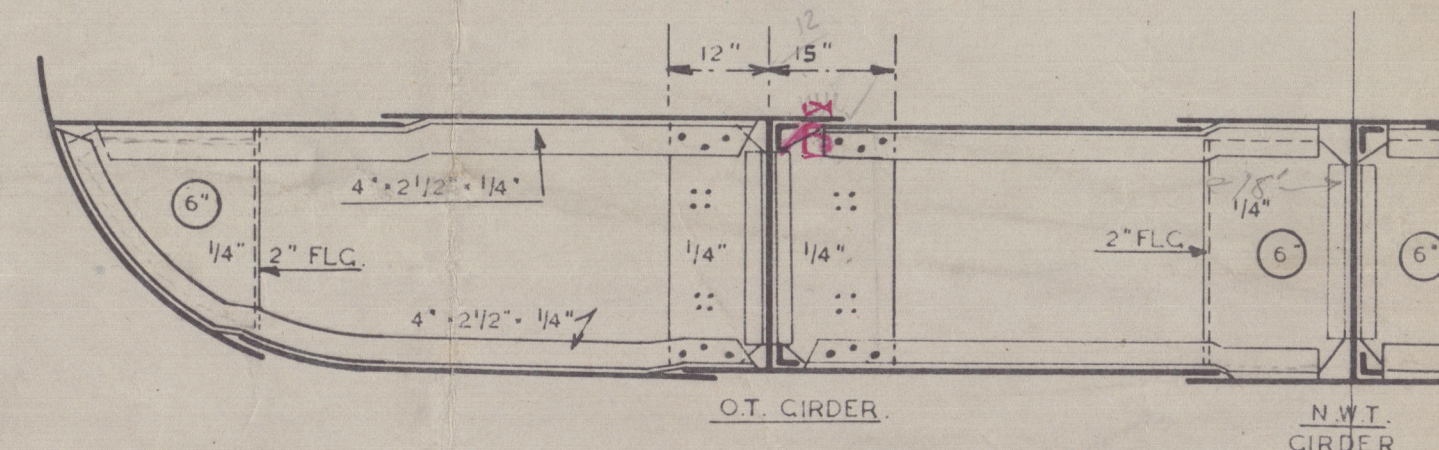
SECTION THRO' ENGINE ROOM  
LOOKING AFT.



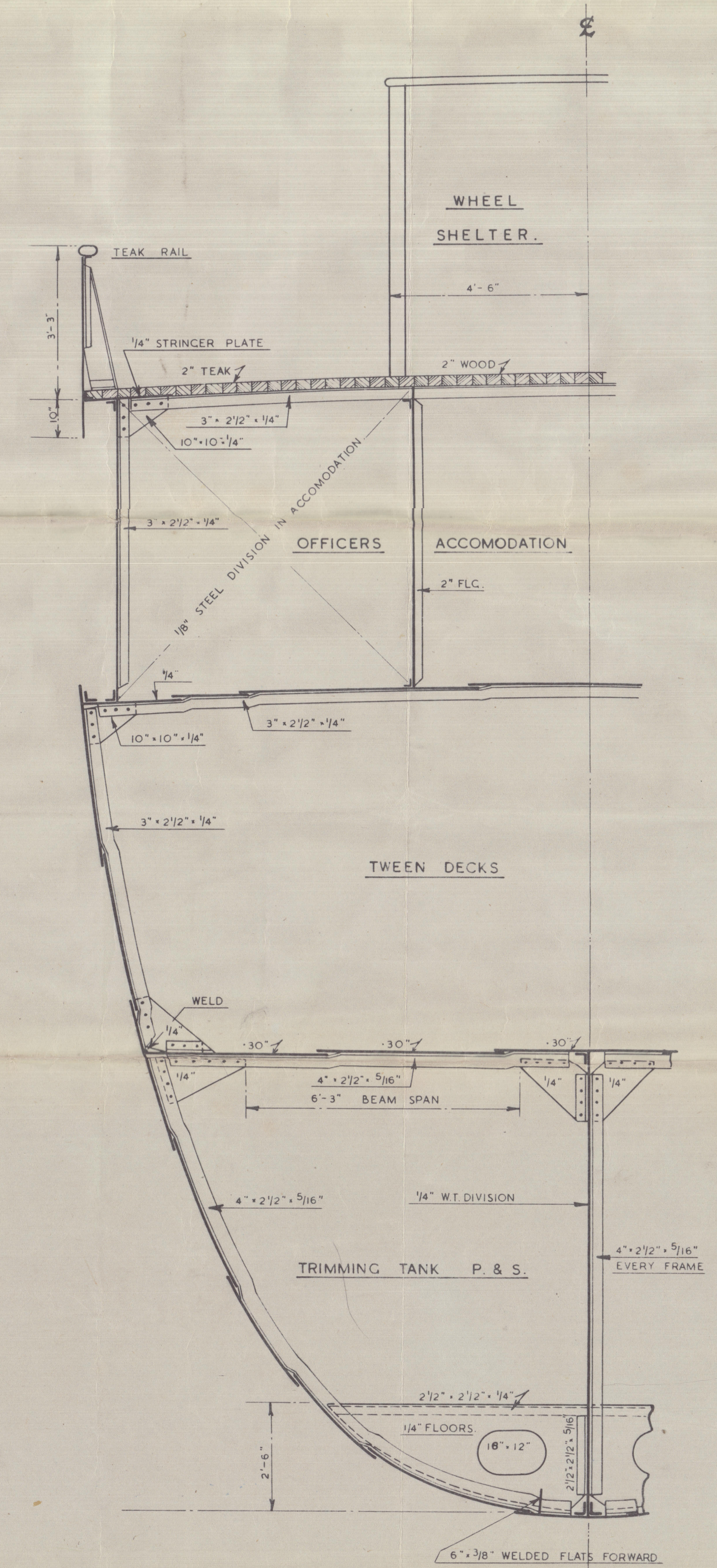
SECTION THRO' BOILER ROOM.



MIDSHIP BODY SECTION FR. 33  
LOOKING AFT.



SECTION AT BRACKET FLOOR.



SECTION THRO' TRIMMING TANK.  
LOOKING FORD.



(4)

Structural Division

TRANSFERRED TO:  
L. R. SYSTEM

Cuba 158-9.

7 OCT 1944

Empire Maytime now MEMBAU  
" Maytree now MARTIN

TRANSFERRED TO:  
L. R. SYSTEM



© 2021

Lloyd's Register  
Foundation

010276-010282-0002