

SHIP NOS. 853 (AS FITTED)
STEEL DUMB CARGO LIGHTERS
DIMS:- 85'-0" O.A. X 22'-0" B.M. X 6'-6" D.M.
MIDSHIP SECTION
SCALE: 1/2" = 1 FOOT

CLASS 100 A.1. BARGE FOR CEYLON COASTING SERVICE.
 THE SCATLINGS AS SHOWN AMENDED ARE SUITABLE
 FOR A SUMMER DRAUGHT OF 4'-0" MEASURED ABOVE TOP OF KEEL.

EQUIPMENT NUMERAL = 2236.12

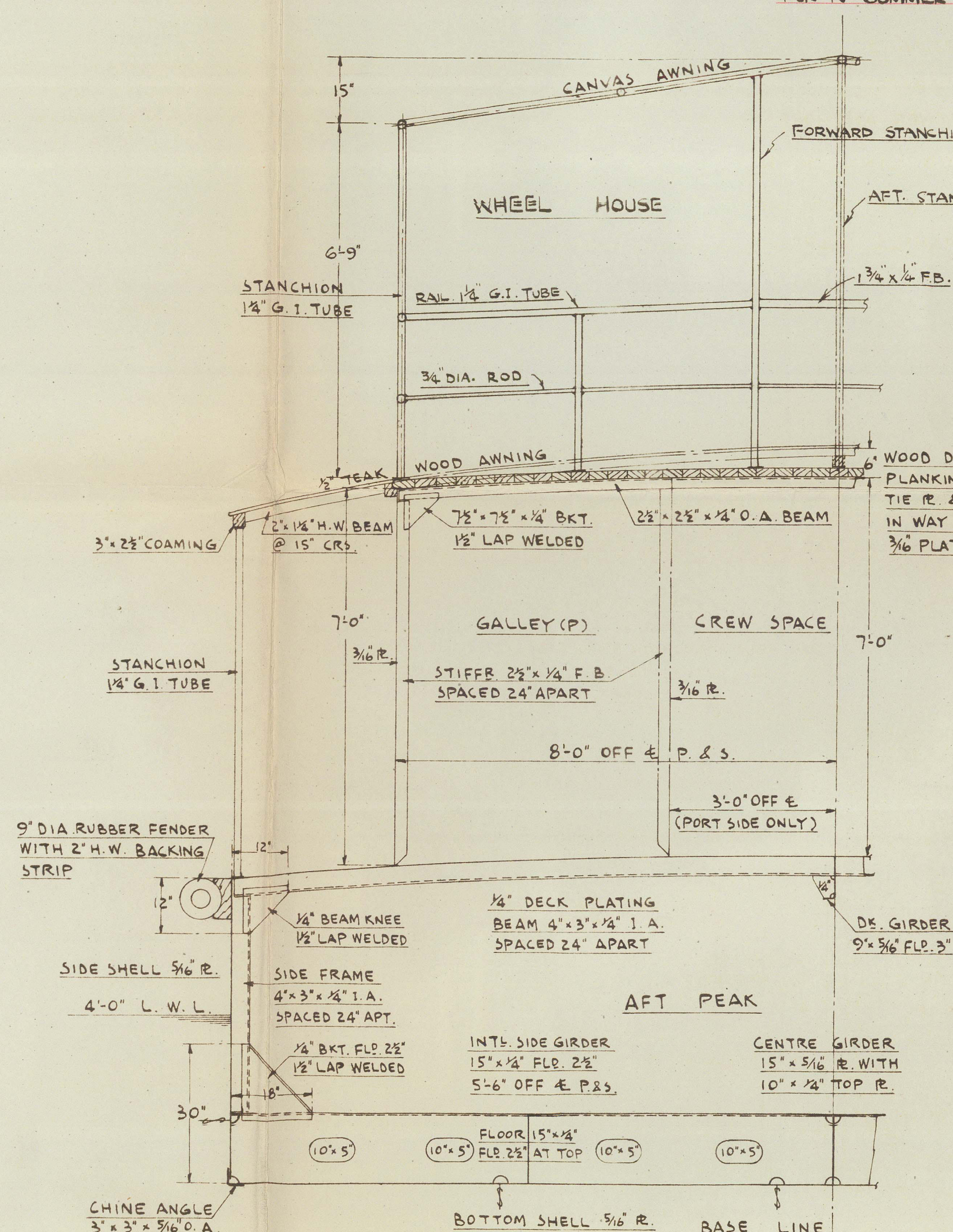
EQUIPMENT :- OWNERS REQUIRED

2-4 3/8 CWTs. STOCKLESS BOWER ANCHORS

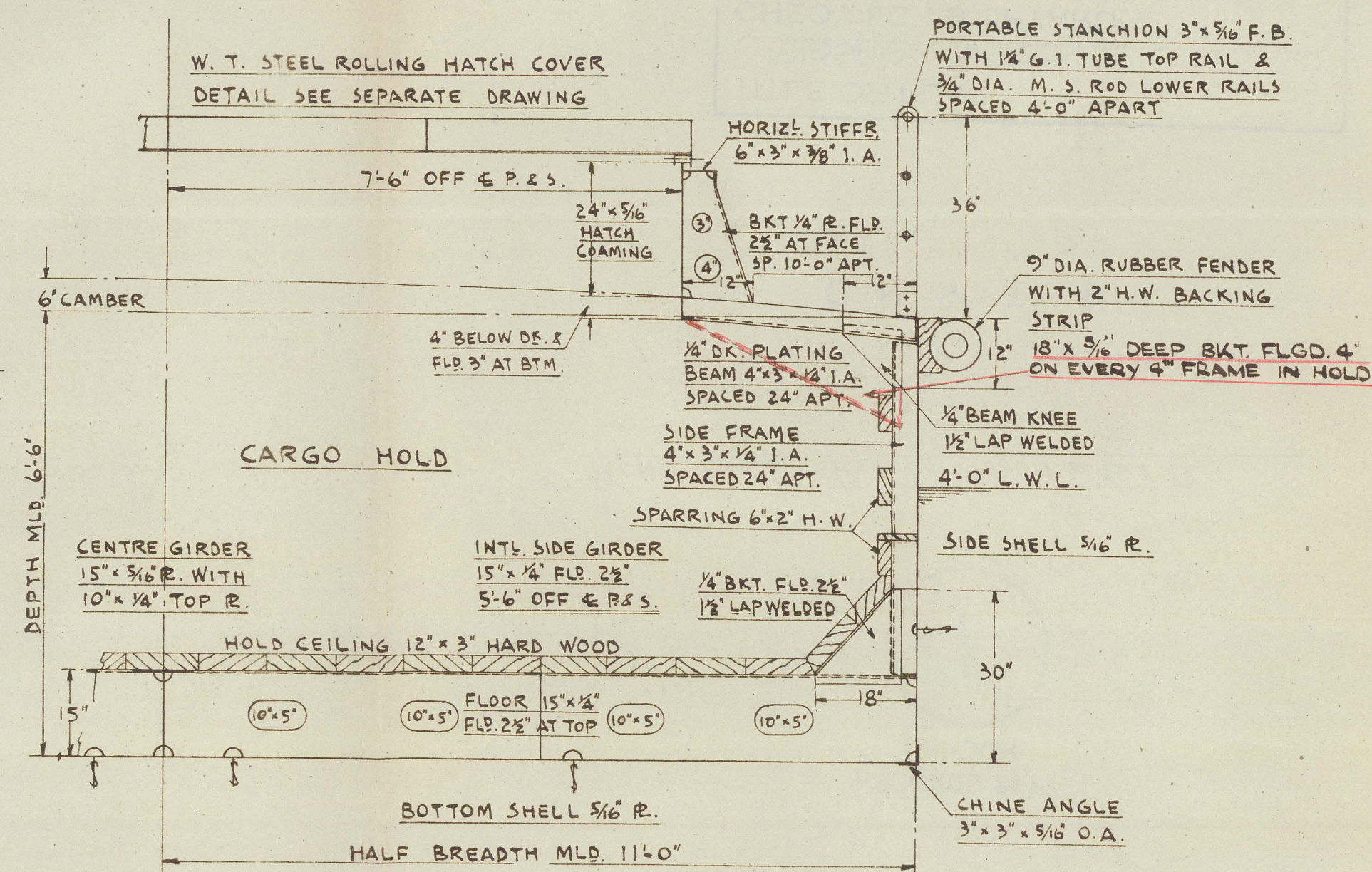
60 FATHOMS 1 1/2" DIA. STUD LINK CHAIN

60 FATHOMS 2" CIRC. F. S. W. R. TOWLINE

60 FATHOMS 3" CIRC. MANILA WARPS



HALF SECTION THRO' DECK HOUSE



HALF SECTION THRO' CARGO HOLD

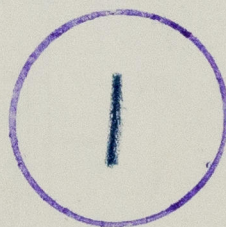
CHEOY LEE SHIPYARD
 NGAU CHI WAN
 KOWLOON

DRAWN BY	LAM KWOK HUNG
CHECKED BY	WONG TIM
DRAWING NO.	853-B58/2
DATE	30-10-1960

APPROVED BY LLOYD'S
 ON 10-11-1960.

BARGE "CHEOY LEE YARD NO. 853"

RECORDS DEPT..
LONDON.



HONG KONG REPORT No. 16610.

"C.M.S. I" ★

TITLE OF PLAN	(AS FITTED)
MIDSHIP SECTION	
CHEOY LEE SHIPYARD	
SHIP NO. 853	
NAME OF SHIP	