

Lloyd's Register of Shipping.

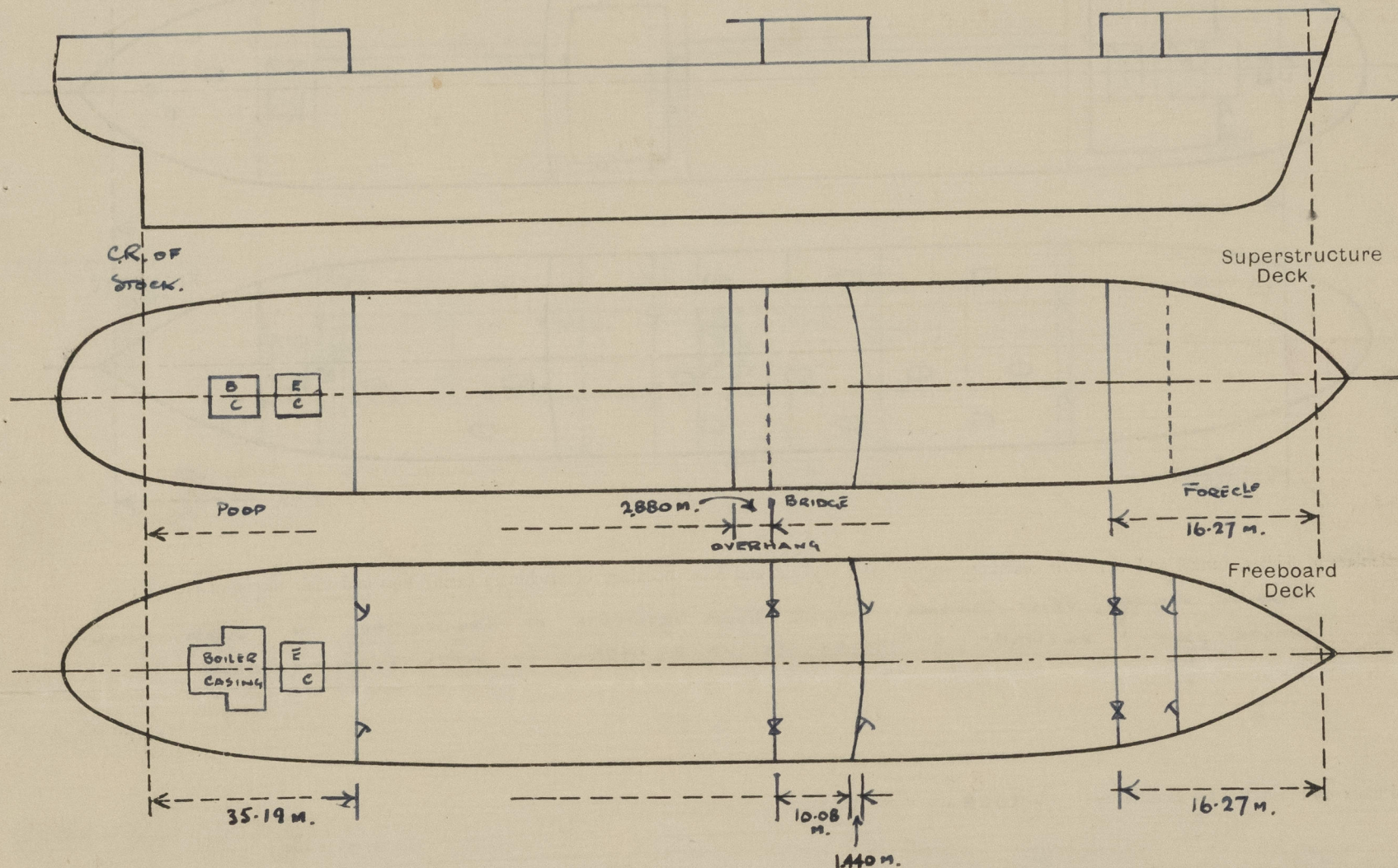
SURVEYS FOR FREEBOARD.

(CONDITIONS OF ASSIGNMENT.)

12 JUL 1950

Ship's Name S.S. "NICHINAN MARU" Port of Survey MAIZURU
 Official Number 1 Surveyor's Signature Refined Sison & M. L. Sison
 Nationality and Port of Registry JAPAN MAIZURU 1950 Date of Survey MAY 1950

Disposition and dimensions of superstructures, trunks, deckhouses and machinery casings to be inserted in the diagrams and tabular statement:—



Particulars of Superstructures, Trunks, Casings, Deckhouses.

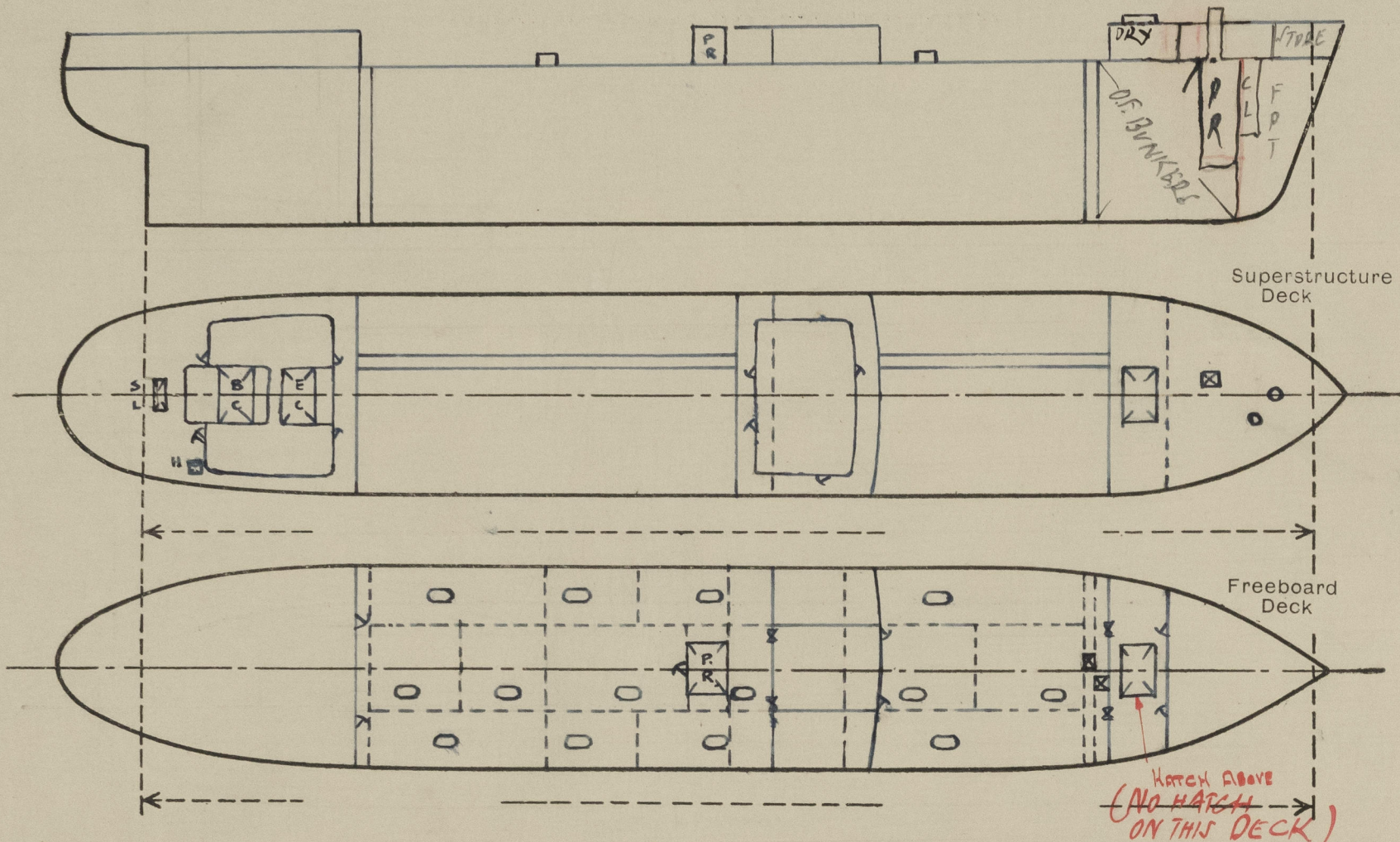
	Coaming	Plating	Stiffeners	Spacing	End Attachments of Stiffeners	Size of Openings	Height of Sills	Height of Casings
Poop Bulkhead ...		11.5 $\frac{1}{4}$	200 x 90 x $\frac{8}{135}$	Abt. 750 $\frac{1}{4}$	LUGGED T&B	2 @ 1590 x 750	450 $\frac{1}{4}$	2.3 m. X
Raised Quarter Deck Bulkhead ...	/							
Bridge, After Bulkhead ...		8.5 $\frac{1}{4}$	75 x 75 x 9 $\frac{1}{2}$	Abt 750 $\frac{1}{4}$	FREE	2 @ 1500 x 720	400 $\frac{1}{4}$	2.3 m. X
Bridge, Forward Bulkhead ...		11.5 $\frac{1}{4}$	200 x 90 x $\frac{8}{135}$	710 / 750 $\frac{1}{4}$	LUGGED T&B	2 @ 1490 x 610	450 $\frac{1}{4}$	2.3 m. X
Forecastle Bulkhead ...		8.5 $\frac{1}{4}$	75 x 62 x 8 $\frac{1}{2}$	600 / 760 $\frac{1}{4}$	FREE	2 @ 1350 x 900	430 $\frac{1}{4}$	2.3 m. X
Trunk, Aft ...	/							
Trunk, Forward ...	/							
Exposed Machinery Casings on Freeboard or Raised Quarter Decks ...	/							
Exposed Machinery Casings on Superstructure Decks ...	/							
Machinery Casings within Superstructures not fitted with Class I Closing Appliances ...	/							
Deckhouses on Flush Deck Ships ...	/							

Particulars of Closing Appliances (state if capable of being manipulated from both sides).

Poop Bulkhead ...	W.T. STEEL DOOR CAPABLE OF MANIPULATION FROM BOTH SIDES X
Raised Quarter Deck Bulkhead ...	/
Bridge, After Bulkhead ...	WOOD SHIFTING BOARDS IN CHANNELS RIVETED TO BULKHEAD. X
Bridge, Forward Bulkhead ...	W.T. STEEL DOOR CAPABLE OF MANIPULATION FROM BOTH SIDES. X
Forecastle Bulkhead ...	WOOD SHIFTING BOARDS IN CHANNELS RIVETED TO BULKHEAD. X
Exposed Machinery Casings on Freeboard or Raised Quarter Decks ...	/
Exposed Machinery Casings on Superstructure Decks ...	/
Machinery Casings within Superstructures not fitted with Class I Closing Appliances ...	/
Deckhouses on Flush Deck Ships ...	PUMP ROOM:- W.T. STEEL DOOR CAPABLE OF MANIPULATION FROM BOTH SIDES. X

PARTICULARS OF PROTECTION TO OPENINGS, ETC.

The following diagrams should be used to indicate the positions of cargo and coaling hatchways, gangway, cargo and coaling ports, ventilators, companionways, etc., which would affect the seaworthiness of the ship:—



Particulars of fiddley, funnel and ventilator coamings, engine room skylight and other openings in machinery casing tops and their means of closing :—

FIDLEY, FUNNEL, VENT COARINGS. ENGINE ROOM SKYLIGHTS ON CASING TOPS OF SUBSTANTIAL CONSTRUCTION. SKYLIGHT & FIDLEY CLOSED BY MEANS OF STEEL FLAPS - (GLASS IN SKYLIGHT) - BOTH CAPABLE OF SECURING.

Particulars of Flush Bunker Scuttles :—

Particulars of Companionways :—

PUMP ROOM ENTRANCE CLOSED WITH HINGED STEEL W/T DOOR
CAPABLE OF MANIPULATION FROM BOTH SIDES. 15" sill

Particulars of Ventilators in exposed positions on freeboard and superstructure decks :—

ALL VENTILATORS 910^N/₄ HIGH OR ABOVE ON SUPERSTRUCTURE DECKS
FITTED WITH WOOD PLUGS AND CANVAS COVERS. ✓
ALL SUBSTANTIALLY CONSTRUCTED AND EFFICIENTLY SUPPORTED. ✓

Particulars of Air Pipes in exposed positions on freeboard, raised quarter, or superstructure decks:—

ALL AIRPIPIES OF STEEL SUBSTANTIALLY CONSTRUCTED OF GOOSE NECK
OR PATENT OIL TANK WEATHERTIGHT TYPE. ALL FITTED
WITH ADEQUATE MEANS OF CLOSING - WOOD PLUGS AND/OR
CANVAS COVERS. MINIMUM HEIGHT:- 460¹/₂ ON SUPERSTRUCTURE DECKS.

Particulars of Gangway Cargo and Coaling Ports :—

12 JUL 1950

Particulars of Scuppers and Sanitary Discharge Pipes :—

SANITARY DISCHARGES:- FROM ACCOMMODATION SPACES IN POOP FITTED WITH N.R. VALVES ON SHIPS SIDE BELOW FREEBOARD DECK. ✓
FROM BRIDGE ACCOMMODATION FITTED WITH N.R. VALVES ON SHIPS SIDE ABOVE FREEBOARD DECK. ✓

Particulars of Side Scuttles :—

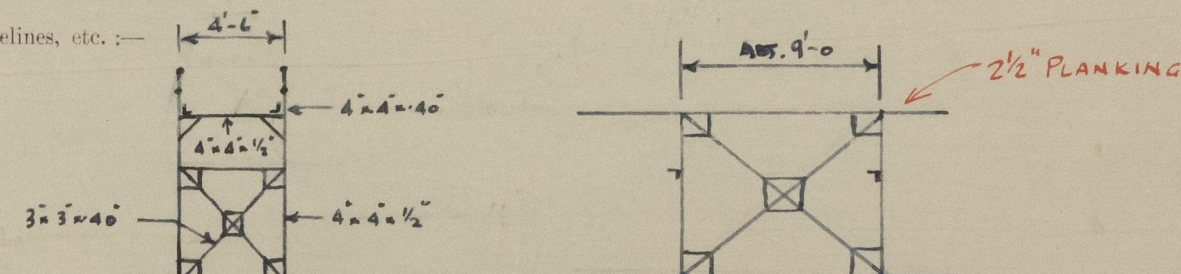
SIDE SCUTTLES IN CREW ACCOMMODATION (POOP) OF SUBSTANTIAL CONSTRUCTION AND FITTED WITH HINGED DEADLIGHTS. X

Vertical distance of Sill of lowest Side Scuttle above top of keel.....34'-0"

Particulars of Guard Rails :—

ON UPPER BECK:-	HIGH	WITH	3 RAILS	STATIONS	APART
✓ FILE " :-	"	"	"	"	"
✓ POOP " :-	"	"	"	"	"

Particulars of Gangways, Lifelines, etc. :—



Particulars of Freeing Arrangements.						
	Length of Bulwark	Height of Bulwark	Size of Freeing Ports	Number each side	Area each side	Rule area each side
After Well						
Forward Well						

State position of each freeing port { After Well :—
(F. and A. position and height above deck edge) { Forward Well :—

State whether the freeing ports are fitted with shutters, bars, or rails, and give particulars of such :—

Additional area where sheer is less than standard. — OPEN RAILS.— ✓

PARTICULARS OF PROTECTION TO OPENINGS, ETC.

HATCHWAYS ON FREEBOARD AND SUPERSTRUCTURE DECKS.										
Description of Hatchway			FORECASTLE DX		UPPER DECK					
			F.P. STORE	ROPE STORE	PUMP ROOM ACCESS	CARGO HATCH	FORD. COFF'DM.	CARGO HOLD ACCESS	OIL HATCHES	AFT COFF'DM.
Dimensions of Hatchway			450 1/4 DIA. - DO -		800 x 800	2800 x 3000	700 x 700	2755 x 3000	1.44 x 1.00	700 x 700
COAMINGS	Height above Deck		380	380	450 1/4	610 1/4	760	760	760	760
	Thickness	Sides	10 1/4	10 1/4	10 1/4	10 1/4	10 1/4	10 1/4	10 1/4	10 1/4
		Ends								
	Stiffeners									
	Brackets, Stays									
HATCH BEAMS	Number									
	Spacing									
	Scantling and Sketch									
	Bearing Surface									
FORE AND AFTERS	Number									
	Spacing									
	Unsupported Lengths									
	Scantling* and Sketch									
	Bearing Surface									
HATCH COVERS	Material		W/T STEEL	HATCHES	FITTED		W.T. & OT.	HINGED STEEL		
	Thickness		WITH TOGGLES	MAXIMUM OF			HATCHES	FITTED WITH TOGGLES		
	How fitted		330 1/4	APART.						
	Bearing Surface									
Spacing of Cleats										
Number of Tarpaulins										

*Are wood fore and afters steel shod at all bearing surfaces?
 Are battens and wedges efficient and in good condition?
 Are tarpaulins in good condition and in accordance with rule requirements?
 Are lashings provided in accordance with rule requirements?

Particulars of any special features:—

THIS VESSEL WAS BUILT IN SEPT. 1942 TO N.K. CLASS AND THE FOLLOWING FREEBOARD HAVE BEEN ASSIGNED BY THE J.G. (JAPANESE GOVERNMENT) L.R. FREEBOARD ASSIGNMENT HAS NOW BEEN REQUESTED.

SUMMER FREEBOARD AHEADSHIPS FROM CENTRE OF DISC TO TOP OF DECK LINE. (STEEL DECK)	1.635 M.
TROPICAL FRESH WATER LINE ABOVE CENTRE OF DISC	.312 M.
FRESH WATER LINE. " " " "	.158 M.
TROPICAL. " " " "	.154 M.
WINTER. " " " "	.154 M.
WINTER NORTH ATLANTIC " " " "	.254 M.

A PROVISIONAL LOAD LINE HAS BEEN ASSIGNED IN ACCORDANCE WITH THE DIMENSIONS INDICATED ABOVE. COPY OF PROVISIONAL CERTIFICATE AND FREEBOARD VERIFICATION FORM ARE ATTACHED. SHEER LINE DRAWING ATTACHED. ALSO HYDROSTATIC CURVES.

CLASS 100 A, CARRYING PETROLEUM IN BULK IS CONTEMPLATED.



© 2021

Lloyd's Register Foundation