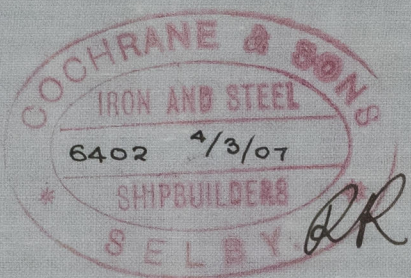


7.3.07.



MIDSHIP SECTION

STEEL SCREW TRAWLER.

N^o 404

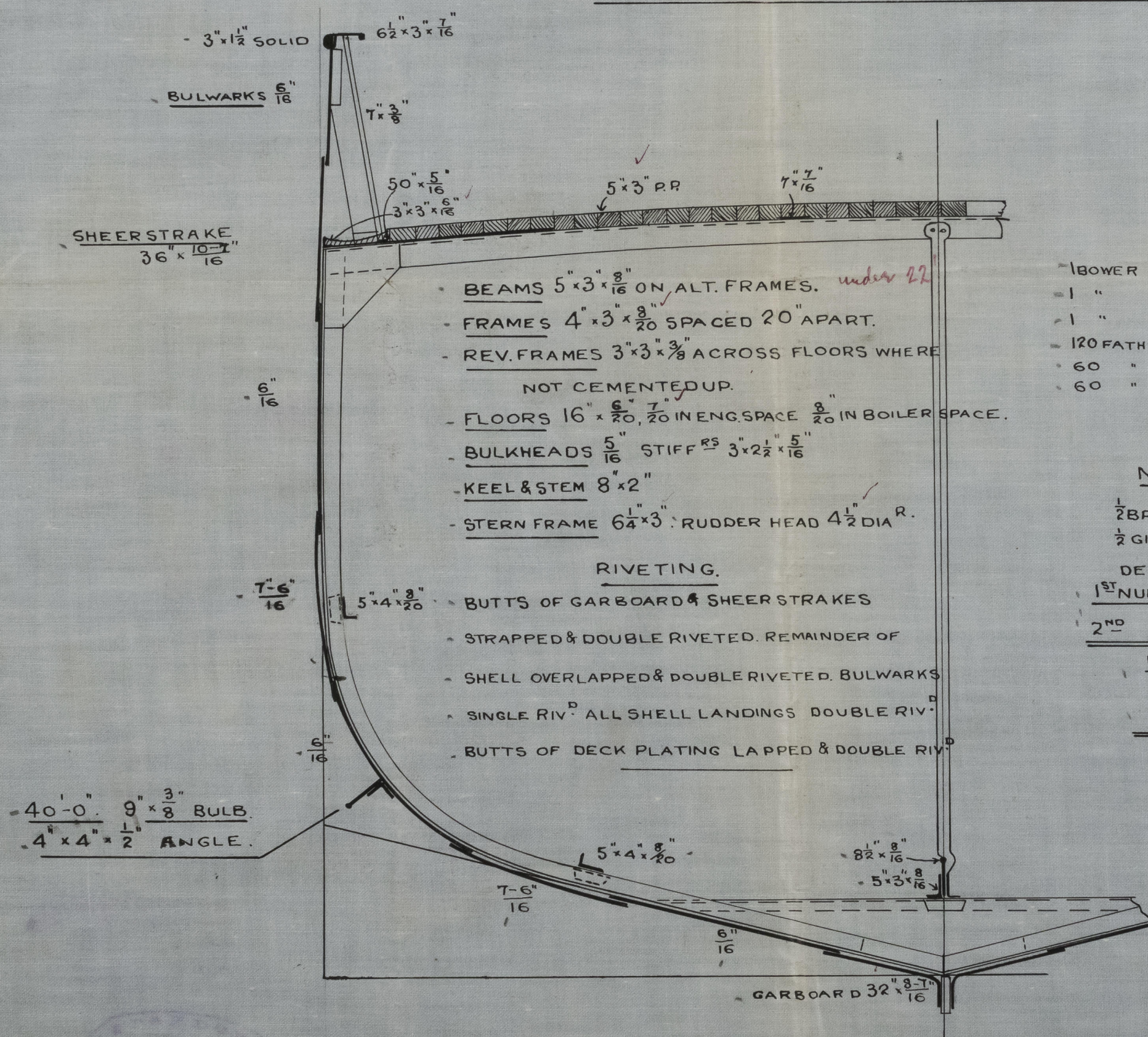
DIM. 135'-0" x 22'-6" x 12'-4" HOLD, 13'-1" MOULDED.

SCALE $\frac{1}{2}" = 1 \text{ FOOT.}$

TO CLASS 100.A.1. AT LLOYDS FOR FISHING PURPOSES.

E & B. CASING AS PREVIOUSLY APPROVED.

DECK PLATED OVER IN WAY OF MACHINERY.



EQUIPMENT.

- 1 BOWER ANCHOR 6 CWT EX STOCK OR 7 1/2 CWT STOCKLESS
- 1 " 5 1/2 " " " 6 3/4 " " " 6-3-14
- 1 " 3 " " " " " " "
- 120 FATHOMS 1 1/2" STUD LINK CABLE.
- 60 " 6" HAWSER.
- 60 " 5" WARP.

NUMERALS.

1/2 BREADTH 11.18

1/2 GIRTH 20.70

DEPTH 13.52

1ST NUMERAL 45.40

2ND " 133.82

6075.43

$\frac{L}{B} = 5.98.$

$\frac{L}{D} = 9.90.$

asw
6-3-07



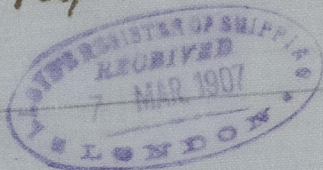
Lloyd's Register Foundation

010236-010245-0150

-Midship Seehorn-
Cochran & Sons, Selby

1/5 Trawler No. 404-

3/5 Indian Empire
Hull Report No.



0236-010245-0150

Lloyds Register
Foundation

Foundation

© 2021

Lloyd's Register
Foundation