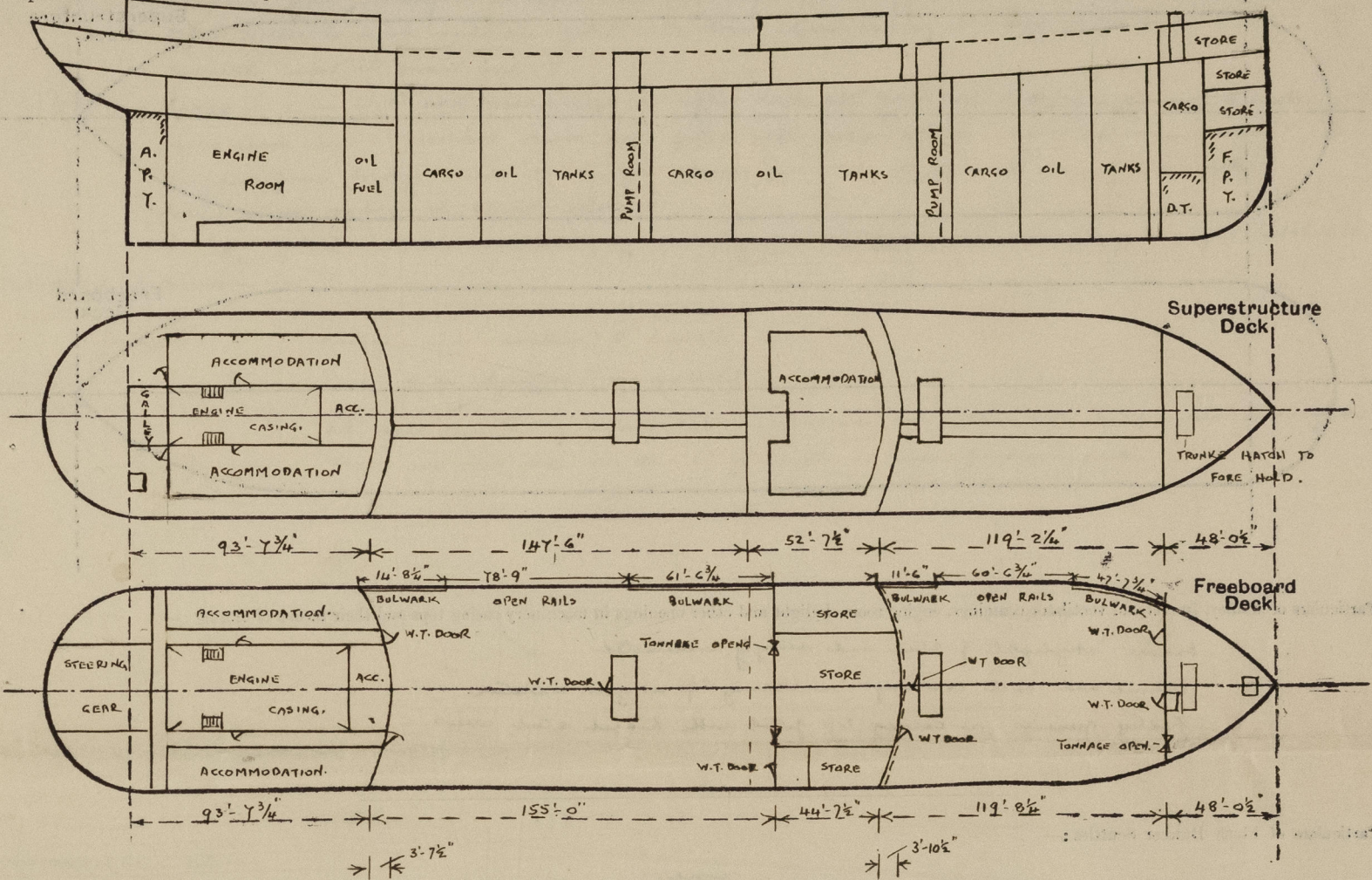


Lloyd's Register of Shipping.  
SURVEYS FOR FREEBOARD.  
(CONDITIONS OF ASSIGNMENT.)

Ship's Name	"NEOTHAUMA"	Port of Survey	GLASGOW
Official Number	180877	Surveyor's Signature	H. Thorne
Nationality and Port of Registry	BRITISH LONDON	Date of Survey	WHILE BUILDING.

Disposition and dimensions of superstructures, trunks, deckhouses and machinery casings to be inserted in the diagrams and tabular statement:—

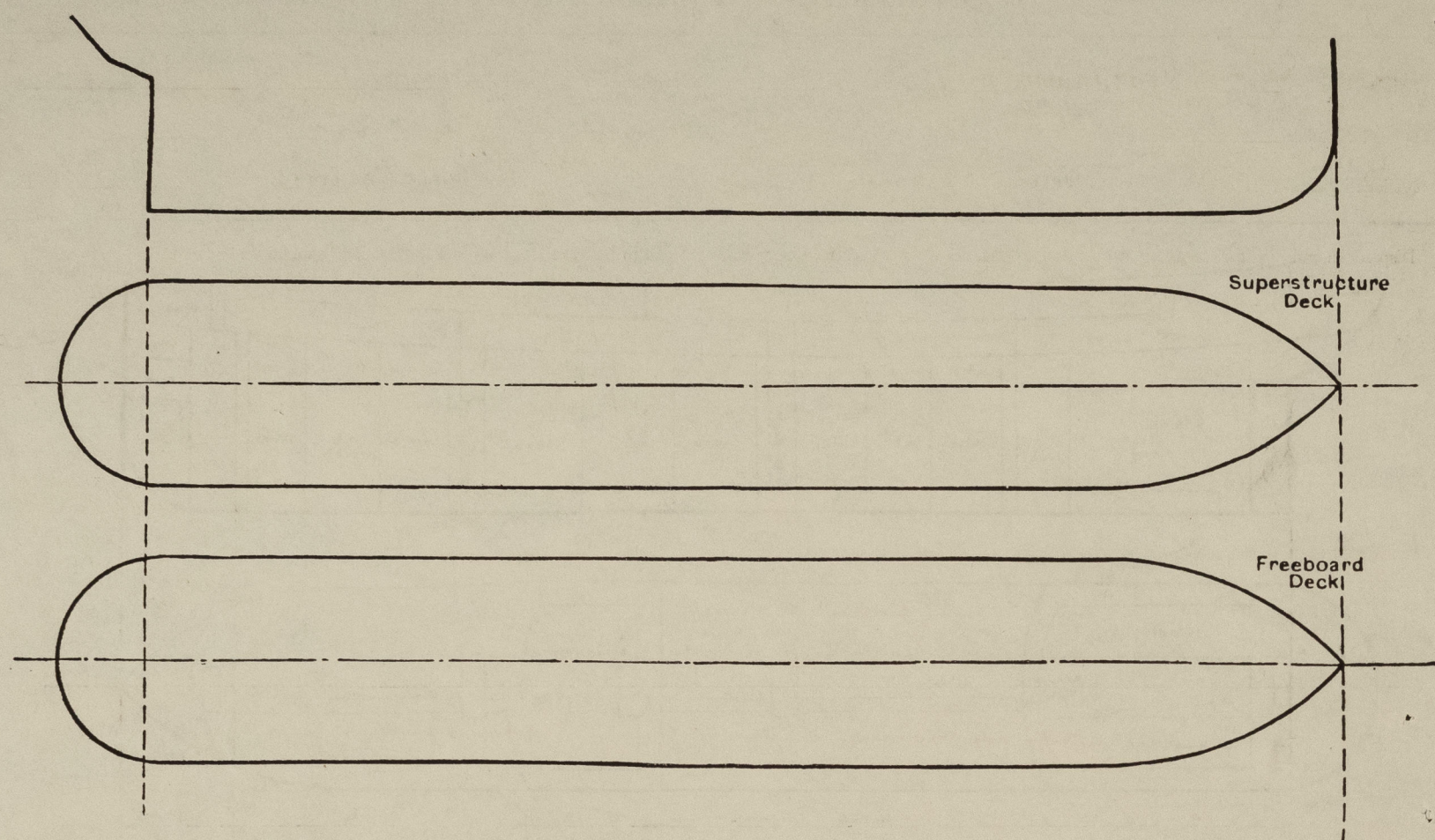


Particulars of Superstructures, Trunks, Casings, Deckhouses.								
	Coaming	Plating	Stiffeners	Spacing	End Attachments of Stiffeners	Size of Openings	Height of Sills	Height of Casings
Poop Bulkhead ...	NONE	'44	10 x 3 1/2 x .44 BA	33"	WELDED TOP + BOTTOM	4'-6" x 2'-6"	21"	✓
Raised Quarter Deck Bulkhead ...								
Bridge, After Bulkhead ...	NONE	'30	4 x 3 x .34 A	30"	WELDED TOP + BOTTOM	4'-6" x 2'-0" 4'-6" x 3'-6"	21"	✓
Bridge, Forward Bulkhead ...	NONE	'44	9 x 3 1/2 x .40 BA	30"	D"	4'-6" x 2'-9" 5'-0" x 4'-1"	21"	✓
Forecastle Bulkhead ...	NONE	'32	4 x 3 x .34 A	30"	D"	5'-0" x 2'-6"	18"	✓
Trunk, Aft ...								
Trunk, Forward ...								
Exposed Machinery Casings on Freeboard or Raised Quarter Decks ...								
Exposed Machinery Casings on Superstructure Decks ...								
Machinery Casings within Superstructures not fitted with Class I Closing Appliances ...								
Deckhouses on Flush Deck Ships ...								
Particulars of Closing Appliances (state if capable of being manipulated from both sides).								
Poop Bulkhead ...	2 HINGED STEEL W.T. DOORS MANIPULATED FROM BOTH SIDES. ✓							
Raised Quarter Deck Bulkhead ...	1 HINGED STEEL W.T. DOOR MANIPULATED FROM BOTH SIDES ✓							
Bridge, After Bulkhead ...	2 OPENINGS CLOSED WITH BOLTED PLATES — BOLTS NOT PASSING THROUGH BULKHEAD							
Bridge, Forward Bulkhead ...	1 HINGED STEEL W.T. DOOR MANIPULATED FROM BOTH SIDES. ✓							
Forecastle Bulkhead ...	1 OPENING CLOSED WITH BOLTED PLATE — BOLTS NOT PASSING THROUGH BULKHEAD							
Exposed Machinery Casings on Freeboard or Raised Quarter Decks ...	2 HINGED STEEL W.T. DOORS MANIPULATED FROM BOTH SIDES. ✓							
Exposed Machinery Casings on Superstructure Decks ...								
Machinery Casings within Superstructures not fitted with Class I Closing Appliances ...								
Deckhouses on Flush Deck Ships ...								



## PARTICULARS OF PROTECTION TO OPENINGS, ETC.

The following diagrams should be used to indicate the positions of cargo and coaling hatchways, gangway, cargo and coaling ports, ventilators, companionways, etc., which would affect the seaworthiness of the ship:—



Particulars of fiddle, funnel and ventilator coamings, engine room skylight and other openings in machinery casing tops and their means of closing:—

Engine skylight of steel and strongly constructed ✓  
Funnel and vent coamings in casing tops in good condition ✓  
Fiddle openings in casing top fitted with hinged steel covers

Particulars of Flush Bunker Scuttles:—

none.

Particulars of Companionways:—

Pump Room Entrances  
Steel casing 7'-6" high. openings in after end 4'-6" x 2'-9" ✓  
Hinged steel w.c. doors - 18" ribs. manipulated from both sides.  
Entrance to pump house at after end.  
Solid work door 5'-0" x 2'-0" - 18" ribs. manipulated from both sides.

Particulars of Ventilators in exposed positions on freeboard and superstructure decks:—

Forecastle deck  
2 vent coamings 36 x 10 x 32 to forward hold  
1 " 36 x 10 x 32 to pump room  
2 " 36 x 8 x 32 to forecastle  
1 " 36 x 8 x 32 to peak  
1 forecabin 36 x 5' dia. to forecastle

Forward & after wells. none.

Bridge deck  
2 vent coamings 30 x 10 x 32 to bridge space  
1 " 30 x 6 x 30 " " "

Poep deck  
1 vent coaming 30 x 12 x 34 to steering gear  
1 " 30 x 6 x 30 - - -  
4 " 30 x 6 x 30 to poep space  
2 " 30 x 10 x 32 to upper deck passages  
13 forecabin 30 x 5' dia. to poep spaces

Particulars of Air Pipes in exposed positions on freeboard, raised quarter, or superstructure decks:—

Forecastle deck 1-4' dia. 18" high to fore peak tank  
2-4' " 18" " " forward deep tanks  
Forward well 2-4' " 7'-0" " forward cofferdam. clipped to bulhead.  
after well 2-3' " 7'-0" " after " " " "  
2-3' " 7'-0" " settling tanks. " " " "  
2-4' " 7'-0" " oil bunkers. " " " "  
Poep deck 2-3' " 18" " " peak water tanks  
2-3' " 18" " " after peak tank  
1-2' " 18" " " cross at tank  
1-3' " 18" " " middle tank

all vent coamings closed with screw down w.c. steel covers.  
Forecabin closed with work plugs.

air pipes to oil fuel tanks, cofferdams and settling tanks fitted with gauge and hinged steel plate closing plates.  
all other air pipes closed with work plugs.

Particulars of Gangway Cargo and Coaling Ports:—

none

Particulars of Scuppers and Sanitary Discharge Pipes:—

Sanitary discharges from W.C. and washpans on poep deck and upper deck aft are carried below foreboard deck and are fitted with brass storm valves at ship's sides.  
Sanitary discharges from W.C. and washpans on bridge deck and main above are carried through ship's sides above upper deck and are fitted with brass storm valves at ship's sides.  
Scuppers from passages on upper deck in poep space are carried through ship's sides below foreboard deck and are fitted with brass storm valves at ship's sides and with screwed caps at inner end.  
Scuppers from W.C. and washpans on upper deck aft and poep deck are carried through ship's sides below foreboard deck and fitted with brass storm valves at ship's sides.  
Scuppers from bridge deck discharge above foreboard deck and are fitted with brass storm valves at ship's sides.  
Bridge and file spaces drained by means of non-detachable screwed plugs in after bulheads.

Particulars of Side Scuttles:—

Bridge side scuttles 8" diameter ✓  
Poep side scuttles 10" diameter ✓  
all side scuttles of substantial construction and fitted with hinged steel deadlights.  
There are no side scuttles in forecabin or below foreboard deck.

Vertical distance of Sill of lowest Side Scuttle above top of keel

✓

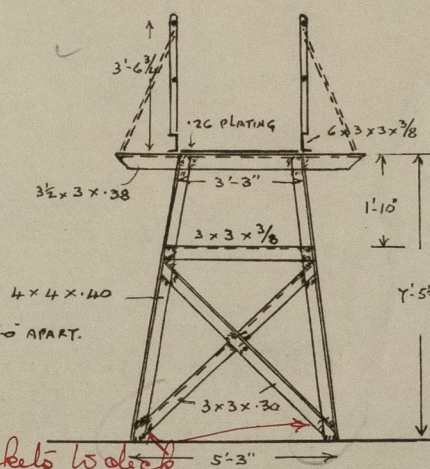
Particulars of Guard Rails:—

Poep, Bridge & Forecabin decks. Open rails 3'-6" high with 3 rods and stanchions about 4'-6" apart.  
Forward & after wells. Open rails 3'-6" high with 3 rods and stanchions about 4'-6" apart.

Particulars of Gangways, Lifelines, etc.:—

Gangway as per sketch extending from poep to bridge and bridge to file decks.

SUPPORTS 8'-0" - 9'-0" APART.



## Particulars of Freeing Arrangements.

	Length of Bulwark	Height of Bulwark	Size of Freeing Ports	Number each side	Area each side	Rule area each side
After Well { TOTAL LENGTH ... 155'-0" ...	POEP FRONT 14'-8 1/2"	3'-6"	3'-0" x 1'-6" (1111)	1	4.0	OPEN RAILS
	BRIDGE END 61'-6 3/4"	3'-6"	3'-0" x 1'-6" (1111)	2	8.0	78'-9"
Forward Well { TOTAL LENGTH ... 119'-8 1/2" ...	BRIDGE FRONT 11'-6"	3'-6"	3'-0" x 1'-6" (1111)	1	4.0	OPEN RAILS
	FILE END 47'-7 1/2"	3'-6"	3'-0" x 1'-6" (1111)	1	4.0	60'-6 1/2"

State position of each freeing port ... (F. and A. position and height above deck edge) { After Well: FROM BRIDGE END TO FORE END 14" P+S } ALL 15" ABOVE DECK  
{ FROM POEP FRONT TO AFTER END 33'-0" x 14" P+S }  
{ Forward Well: FROM BRIDGE FRONT TO AFTER END 14" P+S }  
{ FROM FILE END TO FORE END 27'-0" P+S }

State whether the freeing ports are fitted with shutters, bars, or rails, and give particulars of such:— 3 VERTICAL RODS 9" APART.

Additional area where sheer is less than standard.



# PARTICULARS OF PROTECTION TO OPENINGS, ETC.

HATCHWAYS ON FREEBOARD AND SUPERSTRUCTURE DECKS.									
← FREEBOARD DECK → POOP DECK → FILE DECK →									
Description of Hatchway	... ..	O.T. HATCHES	MANHOLES TO COFFERDAMS	HATCH TO F.P. STORE	HATCH TO FORE HOLD	HATCH TO STORE	HATCH TO FORE HOLD		
Dimensions of Hatchway	... ..	4'-0" DIA.	25" x 18"	2'-6" x 2'-0"	10'-0" x 8'-0"	2'-3" x 2'-3"	10'-0" x 8'-0"		
COAMINGS	Height above Deck	10" x 3/4"	4" ANGLE	6" ANGLE	HATCH TRUNKED	6" ANGLE	30"		
	Thickness	WELDED TO DECK	COAMING WELDED TOE ON.		BETWEEN UPPER & FILE DECKS		44"		
	Sides						6" ANGLE WELDED TOE ON.		
	Ends						NONE		
HATCH BEAMS	Number								
	Spacing								
FORE AND AFTERS	Scantling and Sketch								
	Bearing Surface								
HATCH COVERS	Material	STEEL W.T.	STEEL W.T.	STEEL W.T.		STEEL W.T.	STEEL W.T.		
	Thickness	HINGED COVER	COVER	HINGED COVER		HINGED COVER	HINGED COVER		
	How fitted	SECURED	SECURED	SECURED		SECURED	SECURED		
	Bearing Surface	BY TOGGLES	BY BOLTS	BY TOGGLES		BY TOGGLES	BY TOGGLES		
Spacing of Cleats	... ..								
Number of Tarpaulins	... ..								
<p>*Are wood fore and afters steel shod at all bearing surfaces ?</p> <p>Are battens and wedges efficient and in good condition ?</p> <p>Are tarpaulins in good condition and in accordance with rule requirements ?</p> <p>Are lashings provided in accordance with rule requirements ?</p> <p style="text-align: right;">} NONE.</p>									

Particulars of any special features :—

Endorsement at first survey and at surveys for renewal of Certificate :—

The fittings and appliances are in accordance with the particulars shown on this form (or as now modified) and are in good condition.



© 2021

Lloyd's Register Foundation