

SHIPS N<sup>os</sup>. **365-72.**  
**PROFILE & DECKS.**

SCALE: 1/4" = ONE FOOT.

DRG. N<sup>o</sup>. 23.

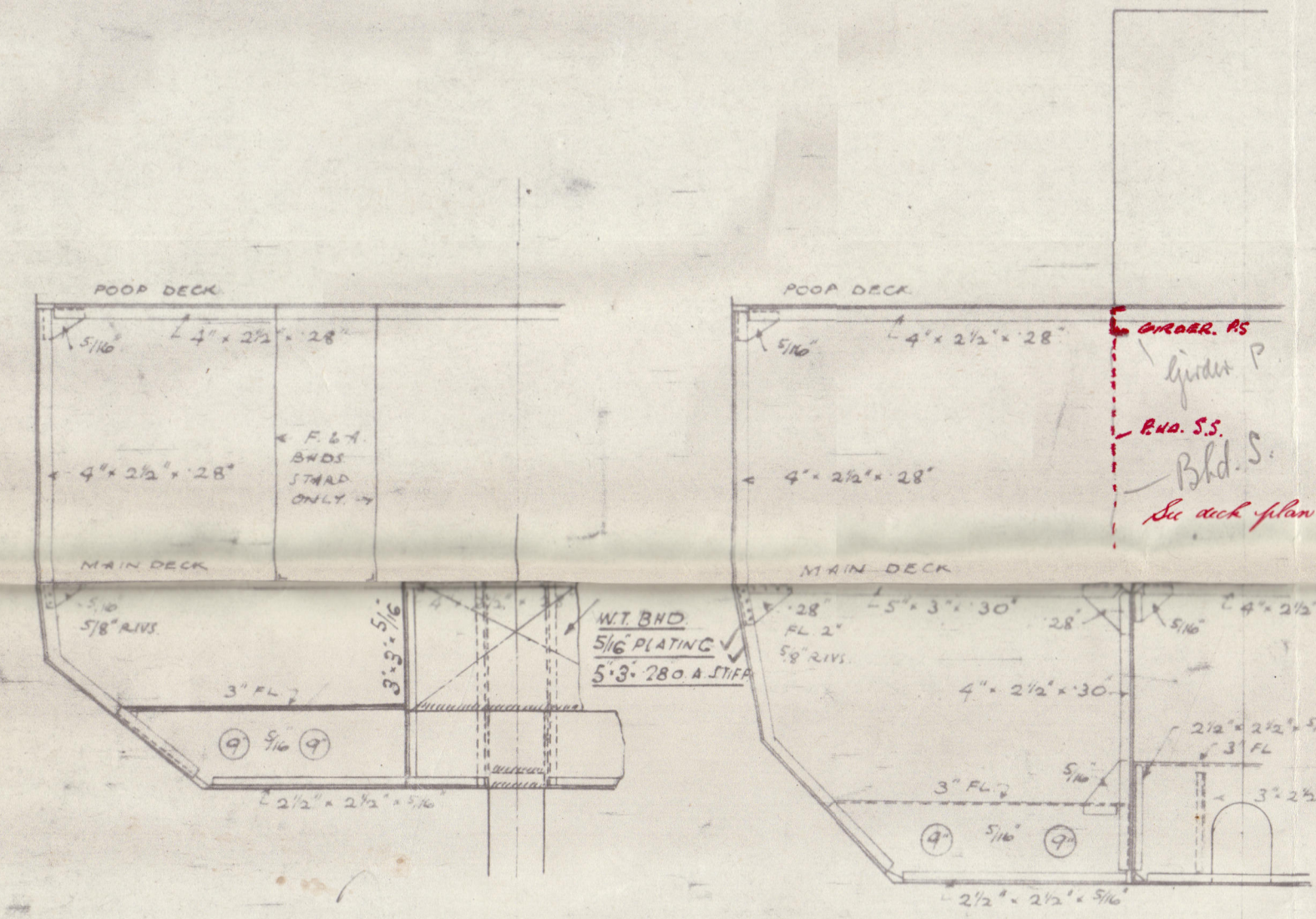
DIMENSIONS: 141' 0" B.P. • 27' 0" MLD. • 11' 0" MLD.

CLASS: B.S.\* (BULK OIL CARRIER, SPECIAL SERVICE).

DRAUGHT 10' 0".

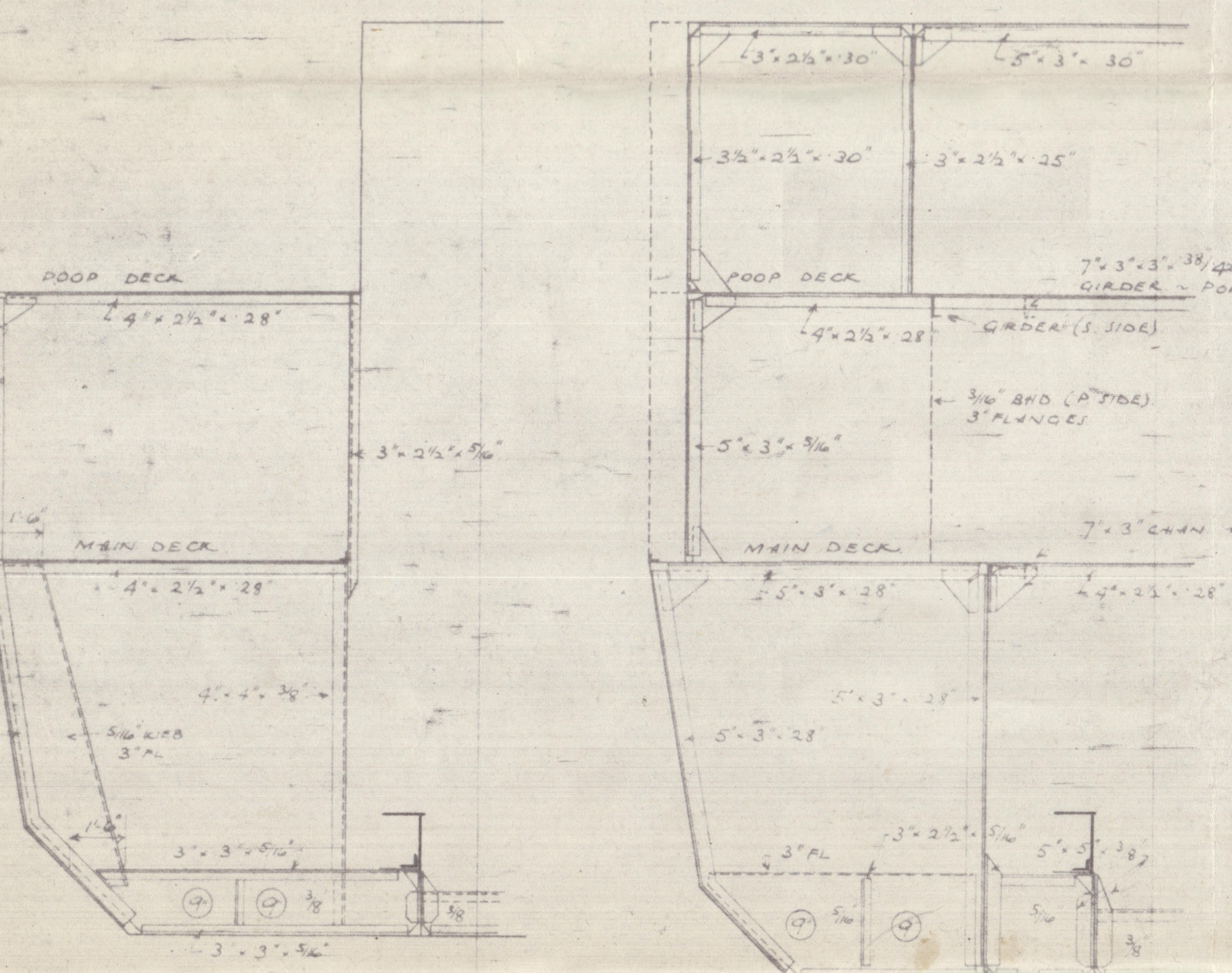
29 NOV 1943

Approved  
S. H. H. 10/11/43  
C. H. H.



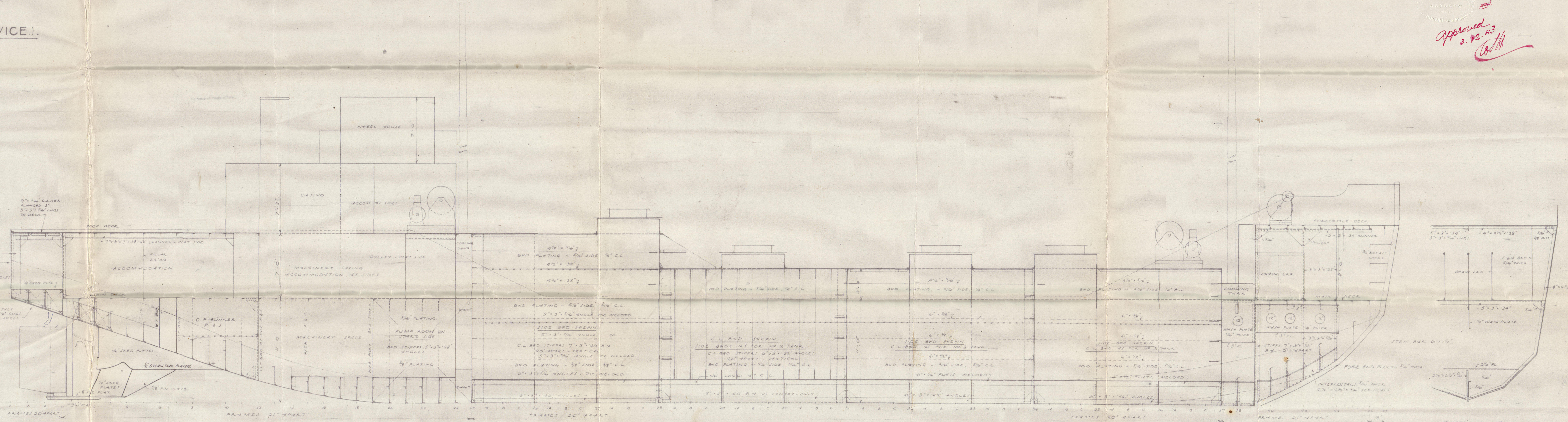
SECTION AT  
FR. NO. 6.

SECTION AT  
FR. NO. 10.

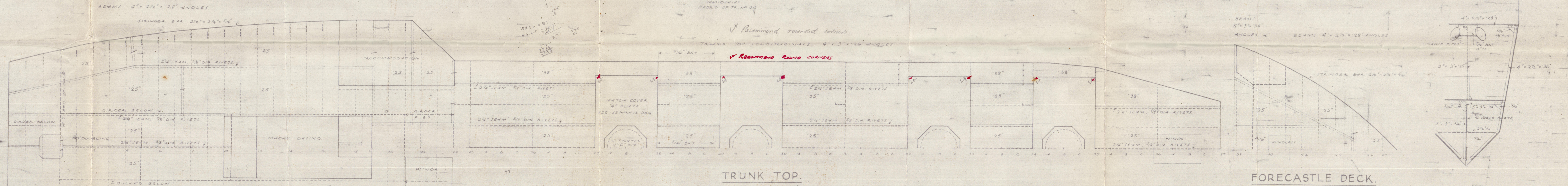


SECTION AT  
FR. NO. 15.

SECTION AT  
FR. NO. 22.

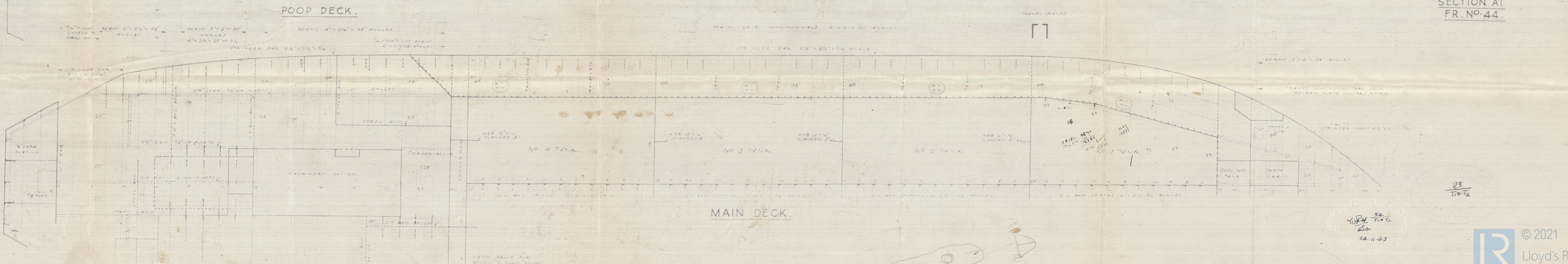


PROFILE.



TRUNK TOP.

FORECASTLE DECK.



MAIN DECK.

SECTION AT  
FR. NO. 40.

SECTION AT  
FR. NO. 44.

23  
11-43

23  
11-43



2

Profile & Deck  
John Readhead & Sons

Nº T1 & T2.

2.12.43.

ARZELLA <sup>4</sup>EX CHANT 60  
CHANT 61.

Bag

29 NOV 1943

John Readhead & Sons T1 & T2



© 2021

Lloyd's Register  
Foundation