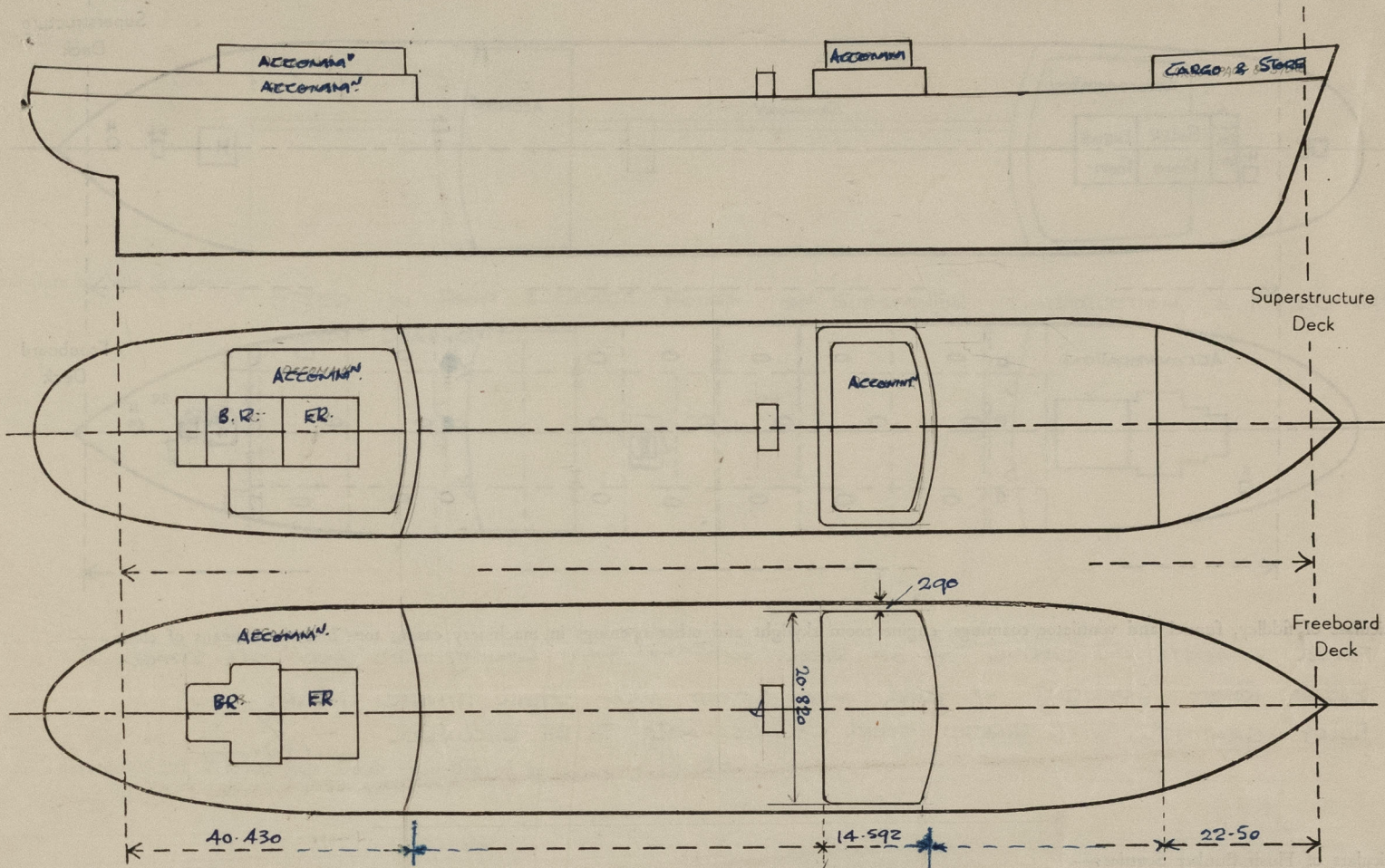


Lloyd's Register of Shipping.
SURVEYS FOR FREEBOARD.
(CONDITIONS OF ASSIGNMENT.)

Index No.
(For London Office only.)

Ship's Name NICHIEI MARU Port of Survey Al. OI. (JAPAN)
Official Number 67000 Surveyor's Signature G. Young
Nationality and Port of Registry JAPAN, TOKYO. Date of Survey Whilst Building.

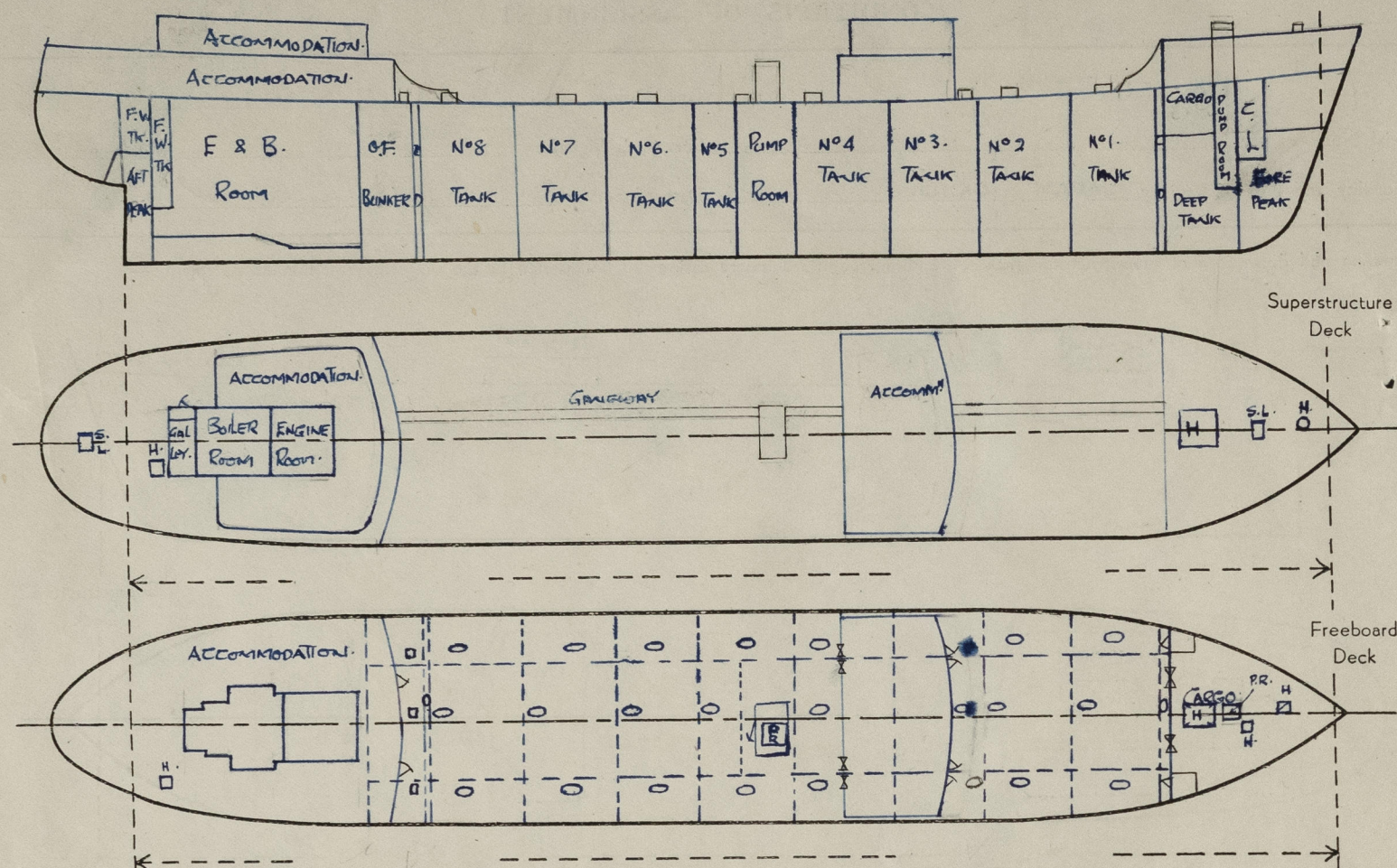
Disposition and dimensions of superstructures, trunks, deckhouses and machinery casings to be inserted in the diagrams and tabular statement:—



Particulars of Superstructures, Trunks, Casings, Deckhouses.								
	Coaming	Plating	Stiffeners	Spacing	End Attachments of Stiffeners	Size of Openings	Height of Sills	Height of Casings
Poop Bulkhead ...	11. ✓	11. ✓	250 x 90 x 12/155 L ✓	760 ✓	BKT. TOP & BOTTOM.	✓ 1360 x 620 ✓	610 ✓	2.350 ✓
Raised Quarter Deck Bulkhead ...	✓							
Bridge, After Bulkhead ...	8 ✓	8 ✓	125 x 75 x 7. I ✓	760 ✓	NONE	✓ 1250 x 935. ✓	610 ✓	2.300 ✓
Bridge, Forward Bulkhead ...	11. ✓	11. ✓	250 x 90 x 12/155. ✓	760	BKT. TOP & BOTTOM.	✓ 1360 x 920 ✓	600. ✓	2.300. ✓
Forecastle Bulkhead ...	8 ✓	8 ✓	75 x 75 x 9 I ✓	700.	NONE.	✓ 1250 x 915. ✓	380. ✓	2.300 ✓
Trunk, Aft ...	✓							
Trunk, Forward ...	✓							
Exposed Machinery Casings on Freeboard or Raised Quarter Decks ...	✓							
Exposed Machinery Casings on Superstructure Decks ...	9.	7/8.	✓ 100 x 10. F.B. ✓	750.	BKT. TOP. ✓ BOTTOM. CONTINUOUS	✓ NONE ✓	✓ NONE ✓	2.440. ✓
Machinery Casings within Superstructures not fitted with Class I Closing Appliances ...	9. ✓	7/8 ✓	✓ 100 x 10. F.B. ✓	750.	BKT. TOP. ✓ BOTTOM CONTINUOUS	✓ 1570 x 600. ✓	270. ✓	2.440. ✓
Deckhouses on Flush Deck Ships ...	11. ✓	11. ✓	✓ 250 x 30 x 12. 8A ✓	760.	BKT. TOP & BOTTOM. ✓	✓ 1360 x 620. ✓	610. ✓	2.300. ✓
Particulars of Closing Appliances (state if capable of being manipulated from both sides).								
Poop Bulkhead ...	HINGED STEEL W/T DOOR. CAPABLE OF BEING MANIPULATED FROM BOTH SIDES.							✓
Raised Quarter Deck Bulkhead ...	✓							
Bridge, After Bulkhead ...	STORM BOARDS IN CHANNELS.							✓
Bridge, Forward Bulkhead ...	HINGED STEEL W/T DOORS. CAPABLE OF BEING MANIPULATED FROM BOTH SIDES							✓
Forecastle Bulkhead ...	STORM BOARDS IN CHANNELS. ✓							
Exposed Machinery Casings on Freeboard or Raised Quarter Decks ...	✓							
Exposed Machinery Casings on Superstructure Decks ...	✓							
Machinery Casings within Superstructures not fitted with Class I Closing Appliances ...	STEEL HINGED DOORS. CAPABLE OF BEING MANIPULATED FROM BOTH SIDES.							✓
Deckhouses on Flush Deck Ships ...	HINGED STEEL W/T. DOOR. CAPABLE OF BEING MANIPULATED FROM BOTH SIDES.							✓

PARTICULARS OF PROTECTION TO OPENINGS, ETC.

The following diagrams should be used to indicate the positions of cargo and coaling hatchways, gangway, cargo and coaling ports, ventilators, companionways, etc., which would affect the seaworthiness of the ship:—



Particulars of fiddle, funnel and ventilator coamings, engine room skylight and other openings in machinery casing tops and their means of closing:—
 FUNNEL & VENTS ON CASING TOP OF STEEL. SUBSTANTIALLY CONSTRUCTED AND WELL STAYED ✓
 ENGINE ROOM SKYLIGHT OF STEEL AND FITTED WITH STEEL HINGED FLAPS. ✓
 FIDLEY GRATINGS, WITH HINGED STEEL COVERS ABLE TO BE SECURED. ✓

Particulars of Flush Bunker Scuttles:—

NONE ✓

Particulars of Companionways:—

GALLEY. PORT SIDE. ENTRANCE TO POOP. PLATING 7/16". WITH HINGED STEEL W/T DOOR ✓
 CAPABLE OF BEING MANIPULATED FROM BOTH SIDES & FITTED WITH 5/16" COAMING. ✓

Particulars of Ventilators in exposed positions on freeboard and superstructure decks:—

FORECASTLE DECK
 5. G.N. 100% DIA. 915 To LIP. To STORE ✓
 4. M.V. 400. " " " " To CARGO SPACE ✓
 1. M.V. 300. " " " " To PUMP ROOM ✓
 1. C.V. 300. " 1500 x 9. COAMING. To PUMP ROOM. (BKT TO BROW WATER) ✓

BRIDGE DECK
 2. G.N. 100% DIA. 760 To LIP. ✓ To STORES.

PUMP ROOM TOP
 3. C.V. 575 x 725. " " { 760 x 12. COAMING. ✓
 1.400 x 12. COAMING. BKT TO DK. ✓

CLOSING APPLIANCES. ALL GOOSENECKS FITTED WITH HINGED FLAP COVERS ✓
 ALL COAL VENTS FITTED WITH CANVAS COVERS & WOOD PLUGS ✓
 ALL MUSHROOM VENTS FITTED WITH SCREW DOWN W/T. COVERS. ✓

POOP DECK
 10. M.V. 150% DIA. 200 x 7. COAMING. ✓
 7. G.N. 100. " " " " } ACCOMMODATION
 4. G.N. 130. " " " " } 8 STORES.
 2. G.N. 80. " " " " }
 3. M.V. 200. " " " " }

UPPER DECK
 2. C.V. 585% DIA. 3100 x 12. COAMING STAYED TO PUMP ROOM. ✓

Particulars of Air Pipes in exposed positions on freeboard, raised quarter, or superstructure decks:—

FORECASTLE DECK
 1-100% DIA. { FORE PEAK.
 1-80 " " {
 2-80 " " {
 2-130 " " {
 2-100 " " {

UPPER DECK
 4-80% DIA. C/DAMS.
 3-100 " " F.O. TICS.
 3-130 " " }

POOP DECK
 2-100% DIA. } To QB. TANKS
 12-80% DIA. }
 10-50% DIA. }
 2-130% DIA. }

FILE DK AIR PIPES 915% To LIP. ✓
 UPPER " " 913% To LIP. ✓
 POOP " " 760% To LIP. ✓

ALL AIR PIPES FITTED WITH HINGED W/T. COVERS. ✓
 ALL O.F. AIR PIPES FITTED WITH GAUZE ✓

Particulars of Gangway Cargo and Coaling Ports:—

NONE ✓

Particulars of Scuppers and Sanitary Discharge Pipes:—

POOP SCUPPERS & SANITARY DISCHARGES FROM UPPER DECK, DISCHARGE BELOW FREEBOARD DECK APPROXIMATELY 2'-6" ABOVE L.W.L. ✓
 AND FITTED WITH STORM VALVE ON SHELL.
BRIDGE SCUPPERS & SANITARY DISCHARGES FROM BRIDGE ACCOMMODATION DISCHARGE ABOVE FREEBOARD DECK WITH STORM VALVE ✓

Particulars of Side Scuttles:—

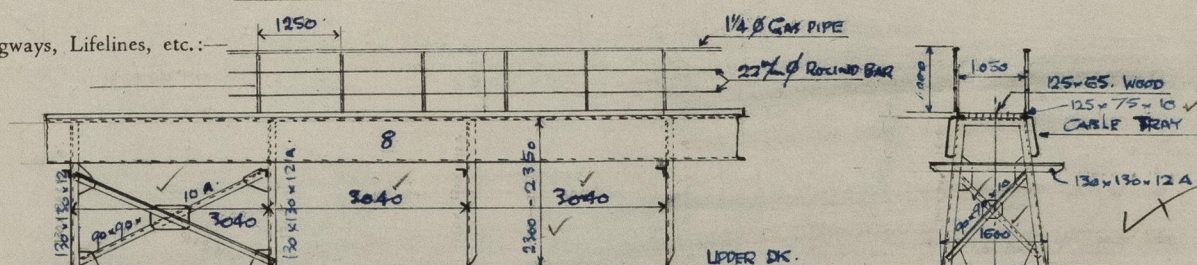
FITTED IN POOP & BRIDGE HOUSE OF SUBSTANTIAL CONSTRUCTION & FITTED WITH HINGED DEADLIGHTS.

Vertical distance of Sill of lowest Side Scuttle above top of keel. 13.120 ✓

Particulars of Guard Rails:—

FORECASTLE, UPPER DECK & POOP DECK.
 3 TIER RAILS, TOP 1/4" G.W.I. PIPE. 2 RAILS 7/8" DIA. ✓ 1.00m HIGH. ✓
 STANCHIONS SPACED APPROX 1.500 M. APART. ✓

Particulars of Gangways, Lifelines, etc.:—



Particulars of Freeing Arrangements.						
	Length of Bulwark	Height of Bulwark	Size of Freeing Ports	Number each side	Area each side	Rule area each side
After Well						
Forward Well						
State position of each freeing port { After Well:— (F. and A. position and height above deck edge) { Forward Well:—						
State whether the freeing ports are fitted with shutters, bars, or rails, and give particulars of such:—						
Additional area where sheer is less than standard.						

OPEN RAILS. ✓

PARTICULARS OF PROTECTION TO OPENINGS, ETC.

HATCHWAYS ON FREEBOARD AND SUPERSTRUCTURE DECKS.										
Description of Hatchway	CARGO TANKS O.F. BUNKER		C/DAMS		B'S/S STORE CHAIN LOCKER		HOLD		F.C.E. DK.	
	O.T. HATCHES ON UPPER DECK	ON UPPER DECK AFT.	ON UPPER DECK FOR	ON UPPER DECK AFT.	INSIDE FORECASTLE	INSIDE FORECASTLE	INSIDE FORECASTLE	INSIDE POOP	ROPE HATCH	T. TWEEN DECKS
Dimensions of Hatchway	1500 x 580	624 x 760	600 x 450	600 x 380	500 x 500	500 x 500	3425 x 4000	500 x 500	500% DIA.	3425 x 4000
COAMINGS	Height above Deck	760 ✓	760 ✓	200 ✓	230 ✓	230 ✓	230 ✓	230 ✓	610 ✓	610 ✓
	Thickness	12 ✓	12 ✓	12 ✓	12 ✓	12 ✓	11 ✓	12 ✓	10 ✓	12 ✓
	Stiffeners	✓	✓	✓	✓	✓	✓	✓	✓	180x30x95BA ✓
	Brackets, Stays	✓	✓	✓	✓	✓	✓	✓	✓	8% FLD BKT ✓
HATCH BEAMS	Number	✓	✓	✓	✓	✓	STEEL PLATE COVER 10% WITH 20% SURROUND PLATE	✓	✓	STEEL PLATE COVER 9% WITH 20% SURROUND PLATE
	Spacing	✓	✓	✓	✓	✓	COVER STIFFENED WITH 250x90x12 BA & 125x90x12.1A SPACED 837 APART.	✓	✓	COVER STIFFENED WITH 230x30x11BA SPACED 1135 APART.
FORE AND AFTERS	Number	✓	✓	✓	✓	✓	✓	✓	✓	✓
	Spacing	✓	✓	✓	✓	✓	✓	✓	✓	✓
HATCH COVERS	Material	W.T. STEEL COVER 13	✓	✓	✓	W.T. STEEL COVER 6%	✓	W.T. STEEL AS ABOVE	W.T. STEEL 12	W.T. STEEL AS ABOVE
	Thickness	SECURED BY EYEBOLTS & NUTS	0° ✓	0° ✓	0° ✓	0° ✓	0° ✓	SECURED BY EYEBOLTS & NUTS	SECURED BY EYEBOLTS & NUTS	SECURED BY BOLTS & NUTS
Spacing of Clots	EYEBOLTS	355 ✓	330 ✓	346 ✓	326 ✓	480 ✓	408 ✓	250 ✓	480 ✓	410 ✓
Number of Tarpaulins	✓	✓	✓	✓	✓	✓	✓	✓	✓	✓
*Are wood fore and afters steel shod at all bearing surfaces? ✓ Are battens and wedges efficient and in good condition? ✓ Are tarpaulins in good condition and in accordance with rule requirements? ✓ Are lashings provided in accordance with rule requirements? ✓										

Particulars of any special features :-

POOP DECK HATCH TO PROVISION STORE :- 1200 x 1200 x 85 x 10 COAMING. W.T. STEEL COVER 10% SECURED BY EYEBOLTS & NUTS. X

F.C.E. DECK SMALL HATCH ON MAIN HATCH :- 1000 x 1000 x 60 x 10 COAMING. W.T. STEEL COVER 10% SECURED BY EYEBOLTS & NUTS. ✓

UPPER DECK SMALL HATCH ON MAIN HATCH :- 1000 x 1000 x 60 x 10 COAMING. W.T. STEEL COVER 10% SECURED BY EYEBOLTS & NUTS. ✓

INSIDE FORECASTLE

SKYLIGHT. AUKY PUMP ROOM. F.C.E. DK. 1380 x 1350. 610 x 8 COAMING. WITH HINGED STEEL W/T FLAPS ✓

SKYLIGHT. STEERING GEAR. 1620 x 1200. 460 x 12 COAMING. WITH HINGED STEEL W/T FLAPS. ✓



© 2021

Lloyd's Register Foundation