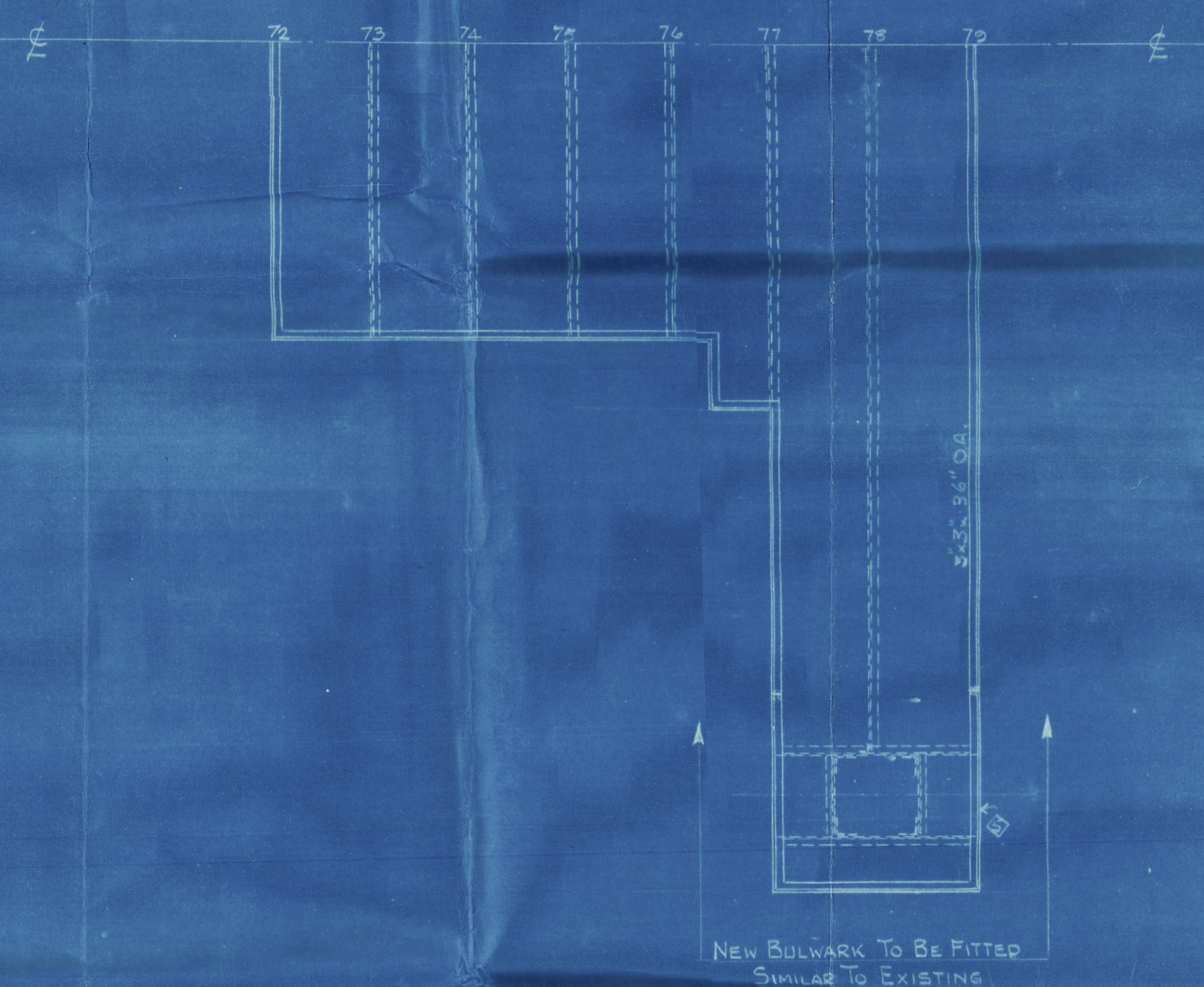
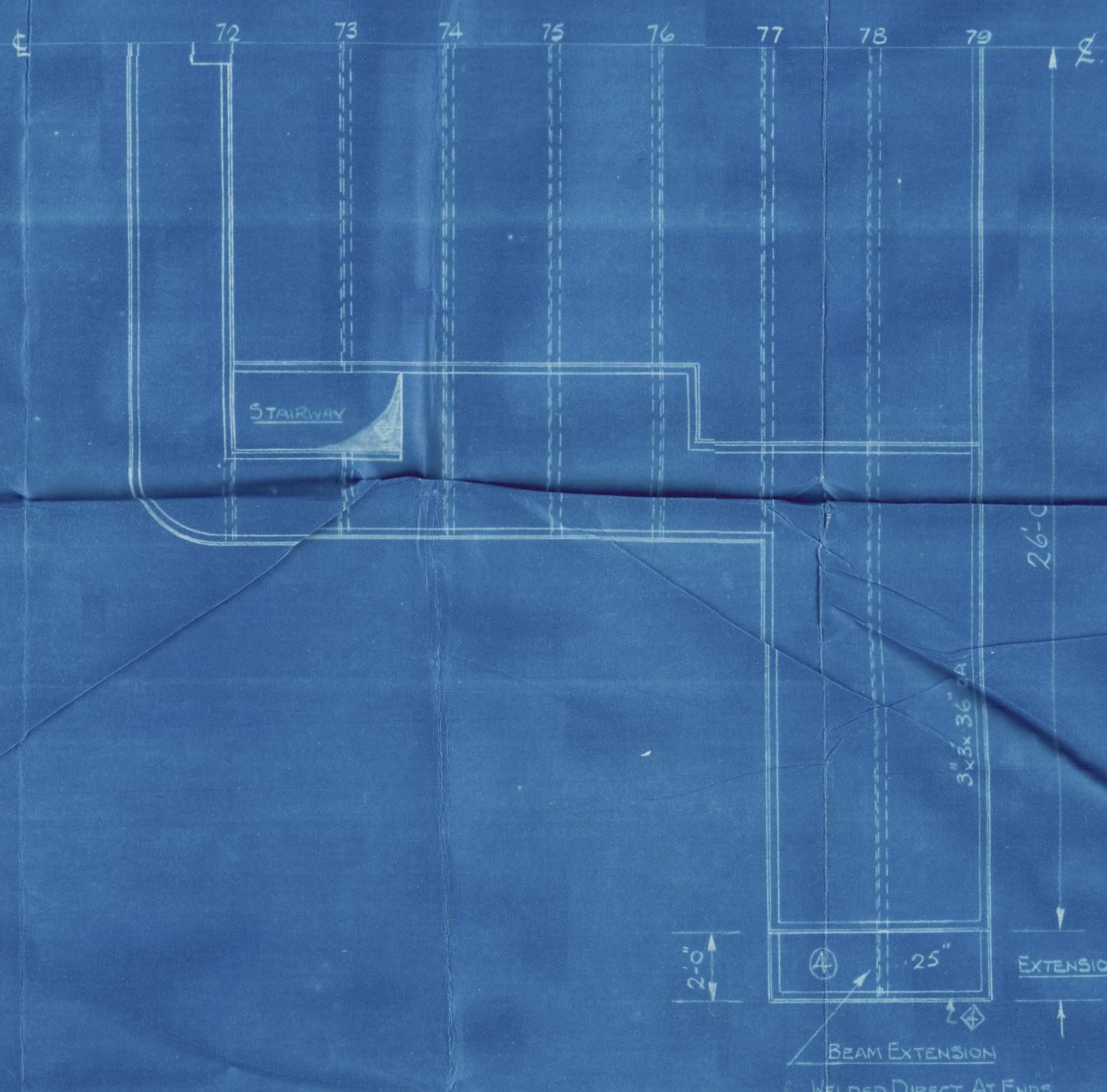


13 DEC 1947

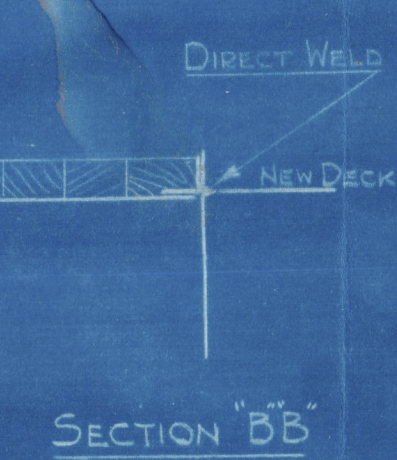
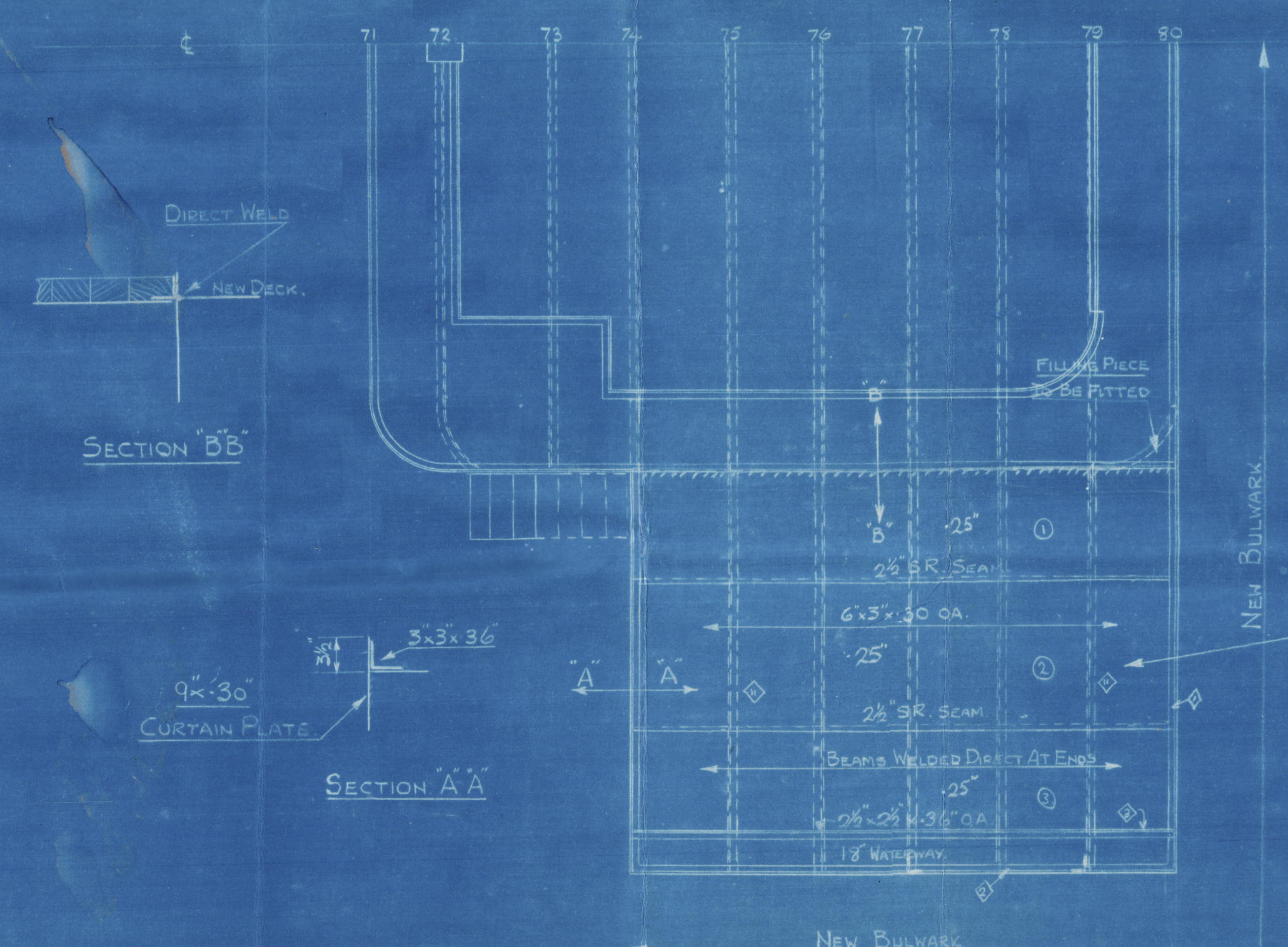
PLAN ON WHEELHOUSE TOP & FLYING BRIDGE



PLAN ON NAVIGATING BRIDGE



PLAN ON LOWER BRIDGE



SECTION A-A

**MATERIAL LIST**

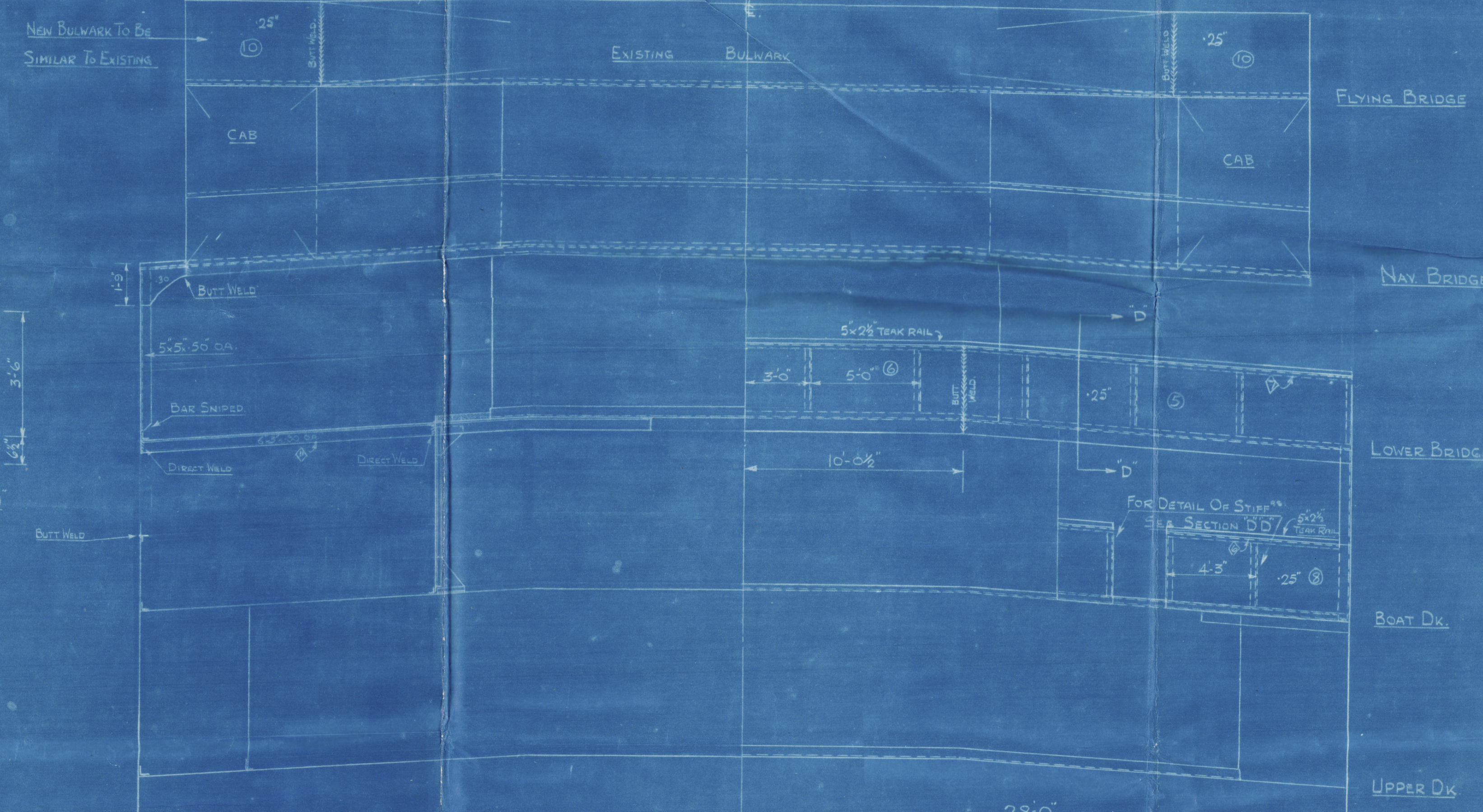
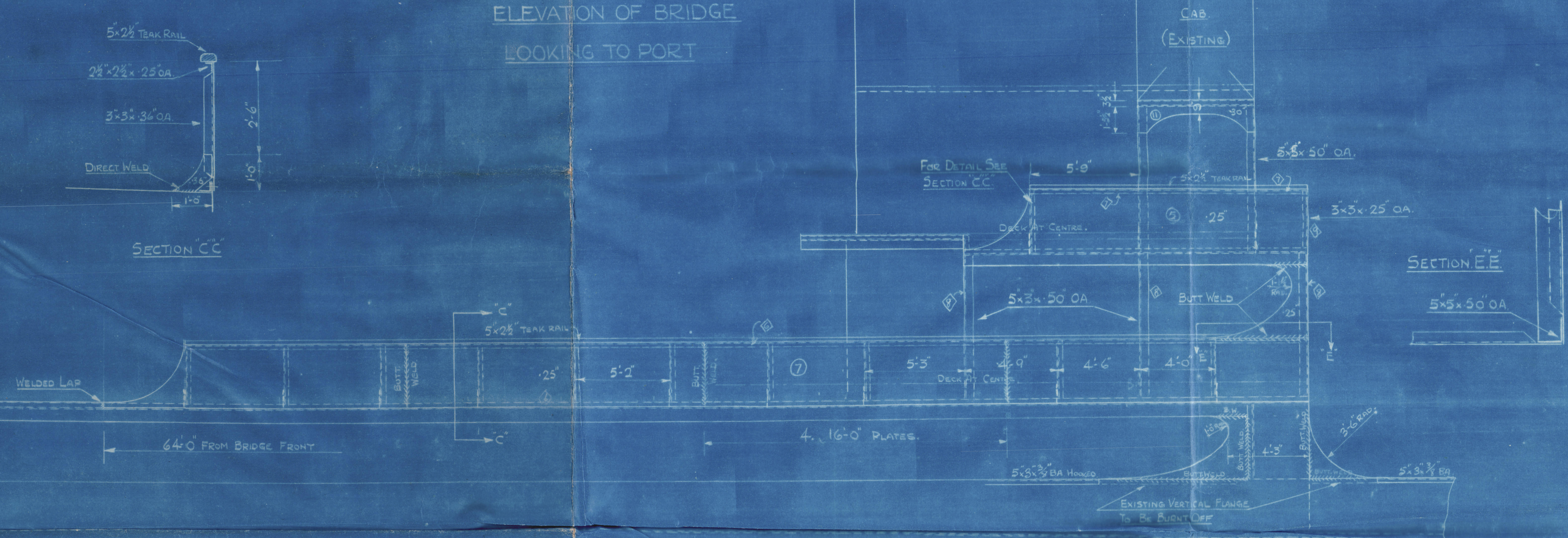
MARK.	NO.	LENGTH	BREADTH	THICK	REMARKS
1	2	18'-6"	4'-6"	25	DK PLATES.
2	2	18'-6"	6'-3"	"	"
3	2	18'-6"	6'-1"	"	LOWER BRIDGE
4	1	6'-3"	4'-3"	"	DK PLATE NAV BRIDGE
5	4	18'-4"	4'-8 1/2"	"	BULKWARK PLATES
6	1	20'-3"	4'-8 1/2"	"	LOWER BRIDGE DECK
7	8	16'-0"	4'-2"	"	BULKWARK PLATES
8	1	22'-9"	4'-2"	"	BOAT DECK
9	1	12'-8"	4'-8"	"	BULKWARK FLYING BRIDGE
10	1	25'-6"	4'-8"	"	"
11	1	21'-0"	2'-1"	30	NS CURTAIN PLATE
<b>FLAT BAR</b>					
1	12'-8"	6"	50	"	FLYING BRIDGE
2	25'-6"	6"	"	"	"
3	13'-9"	9"	30	"	LB CURTAIN
<b>ANGLES</b>					
1	2	27'-3"	3'-3"	36	LOWER BRIDGE
2	1	37'-0"	"	"	"
3	1	37'-0"	2'-2 1/2"	"	NAV BRIDGE
4	1	20'-9"	3'-3"	"	FLYING BRIDGE
5	1	38'-6"	"	"	RAIL TOP BAR
6	4	32'-0"	2'-2 1/2"	25	BOAT DECK
7	1	22'-6"	"	"	RAIL TOP BAR
8	2	28'-3"	"	"	LOWER BRIDGE
9	2	32'-6"	5'-5"	50	SUPPORTS
10	1	16'-0"	"	"	"
11	1	23'-0"	3'-3"	25	CORNER BRIS
12	2	24'-6"	"	36	BULKWARK
13	2	34'-0"	"	"	STIFFENERS
14	10	14'-0"	6'-3"	30	BEAMS

# S.S. STANFIRTH

## PROPOSED MODIFICATIONS TO BRIDGE

SCALE 1/4" = 1'-0"

ELEVATION OF BRIDGE  
LOOKING TO PORT



SECTIONAL ELEV. OF BRIDGE  
LOOKING AFT FROM 79  
FOR FRAME 79

ELEVATION OF BRIDGE FRONT  
LOOKING AFT

11-12-47



(9)

★ ss. "Stanfirth"

NEWCASTLE ON TYNE  
Report No. 105481

Proposed Modifications to  
Bridge

RECORDS DEPT.,  
LONDON



© 2021

Lloyd's Register  
Foundation

010219-016228-0252