

TIMBER

Lloyd's Register of Shipping

SURVEYS FOR FREEBOARD

(AND TONNAGE FOR STEAMER, SAILING SHIP, TANKER)

S/S "RUDOLF"

8582

Swedish
Gothenburg

1969

Gothenburg

hulked
A

76.475 M.

12.50 M.

6.375 M.

4079 M³.

7875

+208 $\frac{m}{m}$ ✓

6.390 M.

-1 $\frac{m}{m}$ ✓

M.	M.	$\frac{m}{m}$	M.
16.781	16.781	2180	16.781
3.744	1.872		1.872
26.250	26.250	1217	26.080

1.833 M.

1.224 M.

790 $\frac{m}{m}$

72.08 %

68.72 %

68.52 %

Timber

80.61 % ✓

5.551	5.550	2837	5.550
1.210	0.10		0.10

Spot front	1.210	1.214	Diff. 0.004	1.224
380		285		285
55.125		52.552		52.402

790 x 80.61 = -637 $\frac{m}{m}$ x

+147 $\frac{m}{m}$

825 $\frac{m}{m}$

890

R.A.

- M

7.607

1.824

$\Delta = 4462$ (m)

5.783

T = 21.59

120 $\frac{m}{m}$ ✓

5.17

= 131 $\frac{m}{m}$ ✓

HEIGHT OF R.Q. DK

$\frac{d}{36} = 161 \frac{m}{m}$ ✓

(+) (-)

208 -

- 637

147 -

- 1

1217 -

1572

638

+934

1824 $\frac{m}{m}$

1573

1693

1704

1985

2151

TIMBER
17 AUG 1943

Timber

business

RAISED QUARTER

410	✓
290	✓
279	✓
2	✓
100	✓
159	✓

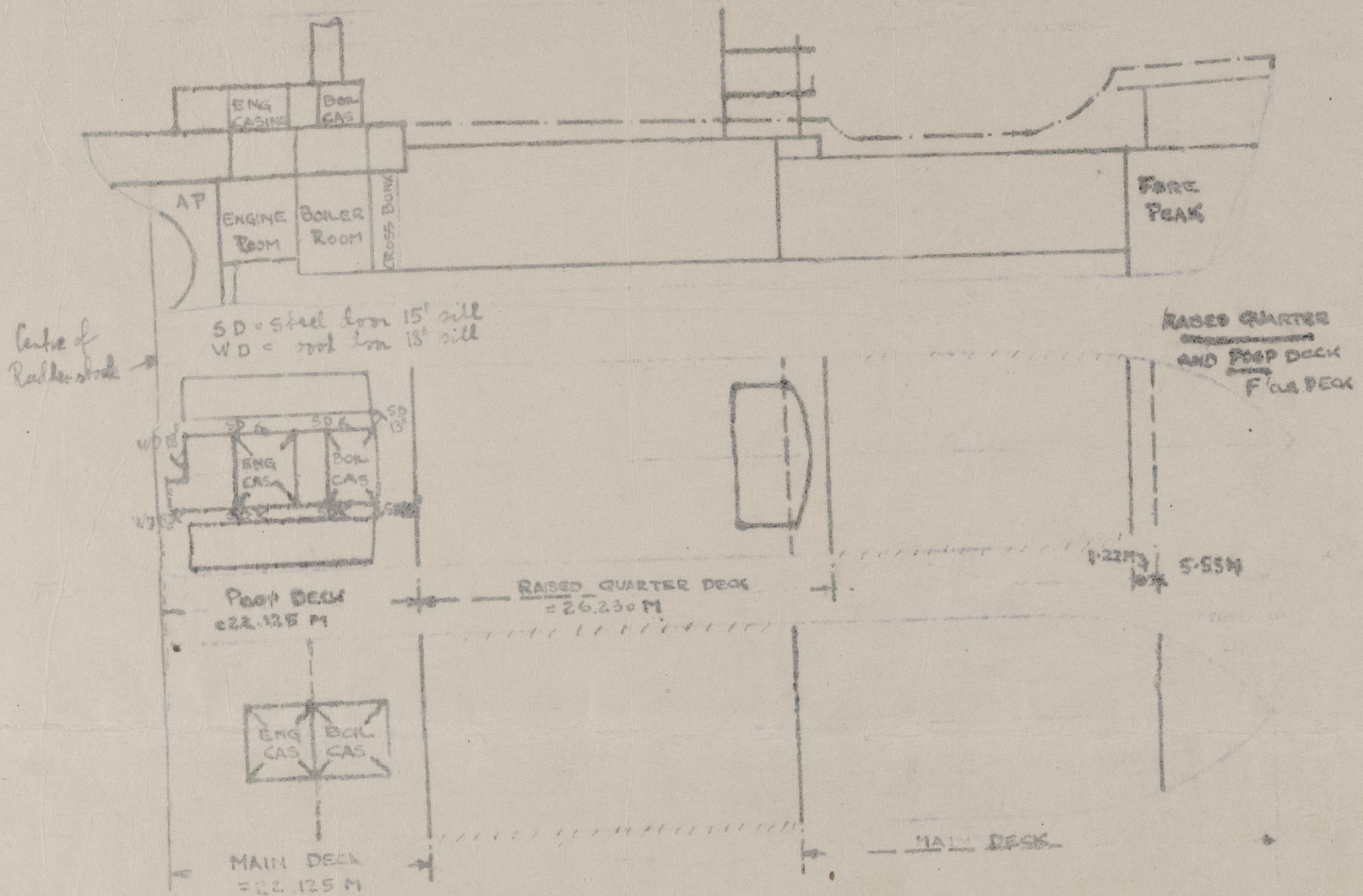


Lloyd's Register
Foundation

010219-010228-0114 1/3

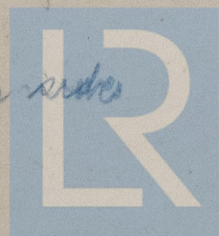
Single screw $\frac{5}{8}$ " RUDOLF
8582
Swedish, Gothenburg

Gothenburg
Berhard Graner
While building



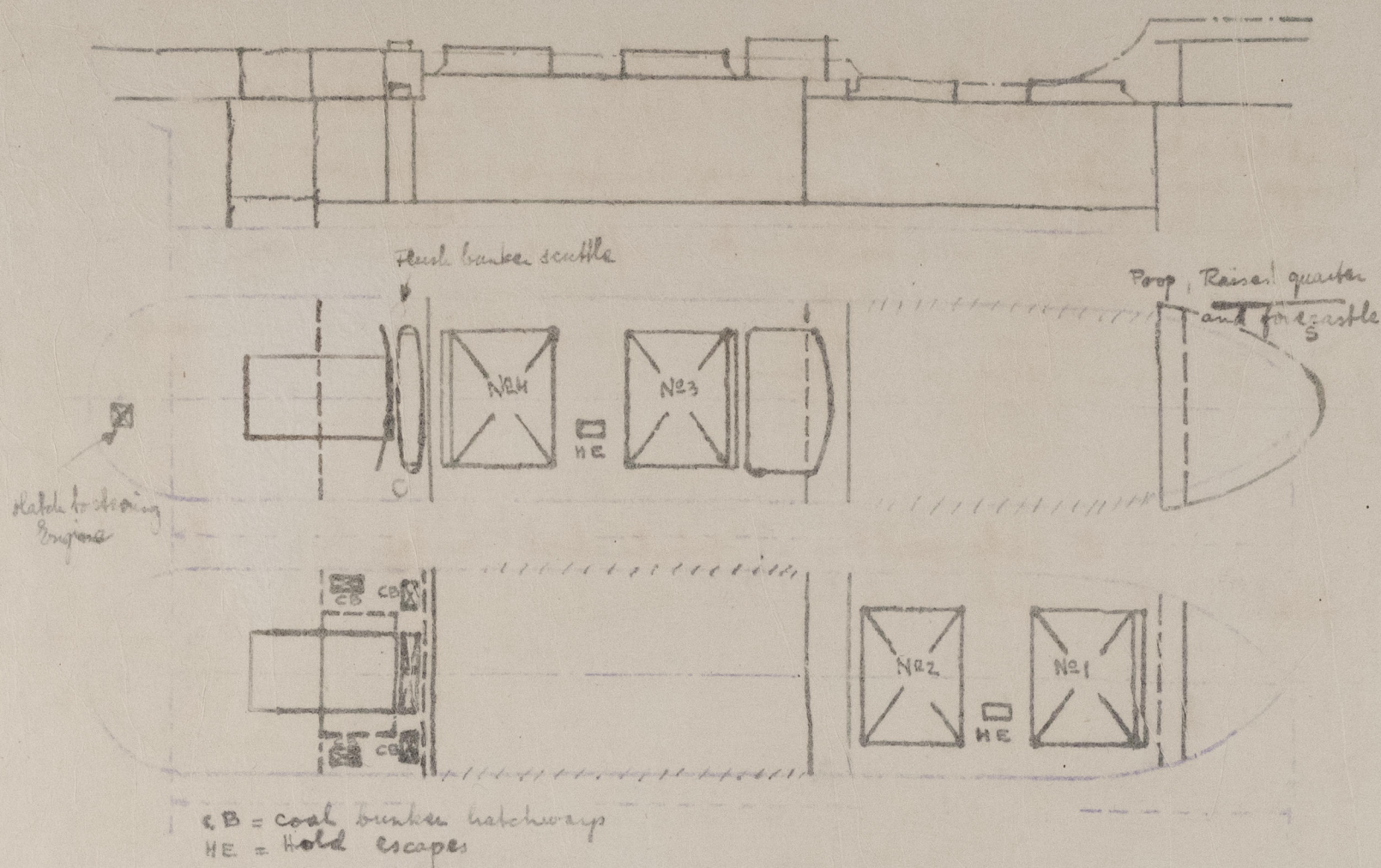
No opening
No opening

Forecastle
Steel plates with hook bolts not passing through bulkhead. Look up 5057
No openings
Hinged steel door operated from both sides
✓
✓



© 2021

Lloyd's Register
Foundation



Tunnel and ventilators on top of boat deck, efficiently constructed and supported. Engine skylight of steel on boat deck, efficiently constructed. ✓

One watertight flush bunker scuttle with machined joints on each side on poop deck, of circular shape with cast iron cover and permanently attached to deck. Diameter 420^{mm}. ✓

Companion ways: None fitted

All ventilators on main Deck, raised quarter-deck, poop deck and fore-castle deck are more than 915^{mm} in height and are efficiently constructed and supported. All ventilators provided with means of closing. ✓

All air pipes are 850^{mm} high of steel pipe and goose neck type and all fitted with means of closing. ✓



© 2021

Lloyd's Register
Foundation

Tonnage opening hatch: coaming 250" x 12" with 70% wood covers and tarpaulins for temporary closing. Opening of hatchway 7200" x 1220" (sides) 1235" (center).
Tonnage opening closed by efficient means of temporary closing. ✓